

## SUNDAY MONEY — HATTERAS



**Builder:** HATTERAS

**Year Built:** 2001

**Model:** Motor Yacht

**Price:** PRICE ON APPLICATION

**Location:** United States

**LOA:** 100' 5" (30.61m)

**Beam:** 22' 6" (6.86m)

**Min Draft:** 6' 6" (1.98m)

**Cruise Speed:** 19.117477324 Kts. (22 MPH)

**Max Speed:** 21.72440605 Kts. (25 MPH)

Our experienced yacht broker, Andrey Shestakov, will help you choose and buy a yacht that best suits your needs **SUNDAY MONEY — HATTERAS** from our catalogue. Presently, at Shestakov Yacht Sales Inc., we have a wide variety of yachts available on our sale's list. We also work in close contact with all the big yacht manufacturers from all over the world.

If you would like to buy a yacht **SUNDAY MONEY — HATTERAS** or would like help answering any questions concerning purchasing, selling or chartering a yacht, please call **+1(954)274-4435**

# TABLE OF CONTENTS

TABLE OF CONTENTS	2
SPECIFICATIONS	6
Basic Information	6
Dimensions	6
Speed, Capacities and Weight	6
Accommodations	6
Hull and Deck Information	7
Engine Information	7
DETAILED INFORMATION	8
UPGRADES SINCE 2012	8
Accommodations	10
Exterior Finish / Construction	11
Hull & Deck Features	11
Aft Deck	11
Interior	12
Salon	12
Dining Room	13
Open Galley/Dinette	13
Bow VIP State Room (Fwd)	13
Bow VIP Head	14
Day Head (Main Level)	14
Lower Companionway	14
Master Stateroom	14
Master Head	15
Midship Starboard VIP Stateroom	15
Midship Port VIP Stateroom	15
Midship Bunk Stateroom (5th Strm)	16
Guest Heads Midship (3 Each)	16

Pilothouse	17
Flybridge & Bridge Deck	18
Audio Video	19
Crew's Companionway	19
Crews Quarters - Customized 2012	20
Crew's Heads - 2 Each	20
Engine Compartment & Bilge	20
Mechanical / Engine Compartment	21
Electrical System	22
Underwater Gear	22
Exclusions	22
Exclusions	23
Disclaimer	23
PHOTOS	24
Aft Profile	24
Port Profile	24
Aft Deck	24
Aft Deck	24
Stairwell To Upper Deck	24
Aft Deck Seating	24
Salon To Aft	25
Salon	25
Salon	25
Salon w/Entertainment Center	25
Salon	25
Formal Dining Table	25
Open Galley Dinette	26
Galley	26
Companionway To Bow VIP Stateroom	26

Galley	26
Bow VIP Head	26
VIP Guest Stateroom Forward	26
Bow VIP Head	27
Master Stateroom Foyer	27
Master Stateroom	27
Master Stateroom	27
Master Stateroom	27
Master Stateroom	27
Master Head	28
Master Head	28
Guest Shower/Day Head	28
Washer/Dryer	28
Midship Bunk Stateroom (5th Strm)	29
Midship Staterooms Entrance	29
Midship Starboard Head	29
Midship Starboard Stateroom	29
Midship Starboard Head	29
Midship Port Stateroom	29
Guest Head	30
Pilothouse	30
Bridge / Helm	30
Hynautic Steering Wheel	30
Bridge Overview	30
Electronics	30
Bridge Deck	31
Dual Bridge Chairs	31
Underwater Lights	31
SAT TV Radar	31

---

Bow Seating	31
Tender	31
Engine Room	32
SAT TV / Radar	32
Engine Room	32
Engine Room	32
Engine Room	32
Engine Room	32
Engine Room	33
Engine Room	33
Crews Quarters Galley	33
Engine Room	33
Crews Quarters Head	34
Crew Quarters Bunks	34
Crew Quarters Stateroom	34
Crew Quarters Stateroom	34
CONTACTS	35
Contact details	35
Telephones	35
Office hours	35
Address	35

---

# SPECIFICATIONS

---

## Basic Information

---

**Category:** Motor Yacht

**Model Year:** 2001

**Year Built:** 2001

**Refit Year:** 2012

**Country:** United States

**Vessel Top:** Hardtop

## Dimensions

---

**LOA:** 100' 5" (30.61m)

**Beam:** 22' 6" (6.86m)

**Min Draft:** 6' 6" (1.98m)

## Speed, Capacities and Weight

---

**Cruise Speed:** 19.117477324 Kts. (22 MPH) **Max Speed:** 21.72440605 Kts. (25 MPH)

**Displacement:** 250000 Pounds

**Gross Tonnage:** 125 Pounds

**Water Capacity:** 840 Gallons

**Holding Tank:** 370 Gallons

**Fuel Capacity:** 5025 Gallons

## Accommodations

---

**Total Cabins:** 5

**Total Berths:** 8

**Sleeps:** 10

**Total Heads:** 6

**Captain Cabin:** True

**Crew Cabin:** 2

**Crew Berths:** 4

**Crew Heads:** 1

---

## Hull and Deck Information

---

**Hull Material:** Fiberglass

**Deck Material:** Fiberglass

**Hull Configuration:** Modified V-Hull

**Hull Color:** White

**Hull Designer:** Hatteras

**Exterior Designer:** Hatteras

**Interior Designer:** Hatteras

---

## Engine Information

---

**Engines:** 2

**Manufacturer:** MTU

**Model:** 16V 2000

**Engine Type:** Inboard

**Fuel Type:** Diesel

---

# DETAILED INFORMATION

---

## UPGRADES SINCE 2012

---

### Exterior:

- Complete paint job by Luu Painting at LMC. 4 coats Matterhorn White by Awlgrip
- All Stainless was removed and polished and reinstalled.
- All side windows were removed and reinstalled
- Three new lighted Yachtsign name boards installed 2013
- USCG towing lights installed for legal towing at night
- Custom stainless mooring whip sockets on both sides of hull and aft swim platform

### Electronics:

- (2) New custom built Nobletec computer systems installed, one 120 volt system and identical 12 volt system as a backup. Both dual station with waterproof 17" Color daylight touch screens and additionally hardwired for operation from captains cabin.
- (2) New Icom 604 VHF Radios with remote mics.
- New Icom 802 SSB and HAM radio
- New Simrad AP70 commercial dual station auto pilot with rudder feedback controls at both wing stations. Both fluxgate and commercial gyro compasses.
- New Furuno FCV 1200 commercial sounder and new transducer - dual station
- New 6 camera security system, 4 cameras are PTZ movable and can be viewed by monitors at pilothouse, flybridge and captain's cabin monitors. All can be viewed and controlled by your phone away from the vessel if connected to the internet. All record to an onboard DVR and history can both be viewed onboard or from your phone
- New Remote controlled spotlight on aft of mast to light up the tow vessel for overnight towing

### Audio Video:

- Dual station Crestron switching controls for pilothouse and flybridge monitors that include a dedicated Direct TV receiver
- New KVH HD7 satellite receiver with tri-Americas LMB. All TV's in this vessel have both an HD USA receiver and a Latin America receiver.



- All Staterooms are equipped with Denon surround sound
- All staterooms have Apple TV, Airplay, and DVD players, including crew quarters
- New WAVE Wi-Fi antenna system
- New Apple Mac Mini computer system with thousands of songs and an unknown amount of movies accessible from any stateroom. Like a Crestron Kalidiscap. All Airplay onboard can be controlled by your phone, throughout the vessel with three linked routers
- All TV's upgraded to flat screens
- Battery back-up for AV
- 150k investment in AV, Upgrades since 2012

### **Flybridge:**

- The flybridge is now fully enclosed and air conditioning was added
- (2) New custom teak tables installed on flybridge. All soft goods replaced
- (2) New Pompanette captains chairs installed at helm (1 ea NEW at Pilothouse)
- Marquipt Crane rebuilt, 2500lb
- New 17' Novurina (2012) hardbottom inflatable with 90 hp Yamaha, Garmin color GPS and depth sounder. Equipped with Fusion stereo system with waterproof remote on helm
- Engine painted White to match boat (Hard bottom)
- New fiberglass storage boxes added to upper deck
- New LED mast lights

### **Engine & Mechanical:**

- NEW TRAC ZERO SPEED STABILIZERS with winglets (8/2012 cost of 200K) can be operated from either the main engine or a power pack via a frequency drive onboard from either generator
- New complete hydraulic bow thruster system
- New hydraulic windlass motor
- Both engines were torn down in 2011 and turbos checked. All EUP injectors replaced and entire cooling system sent out to Broward radiator. Both seawater pumps rebuilt.
- Both generators have new injectors, seawater pumps and complete new spares onboard. Both cooling systems were sent out and reinstalled, all inside box insulation was replaced.

- Both seawater AC pump and all lines replaced and AC chiller pump replaced 6/2014. Two Complete rebuilt pumps stored onboard ready for install when required
- Both genset thru hulls and all hoses replaced 8/2012
- New hydraulic system seawater pump and new spare onboard

**Interior:**

- Entire vessel Lutron lighting control system was replaced and updated with LED lighting
- Most of the vessel's Chiller lines were re-insulated by Essex insulation in 2012 at a cost of 100K
- All air handlers throughout the vessel were replaced except for about 4 of them at a cost of 60K
- New Carpet and pad throughout entire vessel
- Custom storage areas for owners personal items
- Remodeled crew quarters for 5 crew with their own galley. Cost of 130k

**Aft Deck:**

- Aft deck has a built in deep freezer or refrigerator option by flipping a switch
- New teak deck w/ new teak on steps to swim-platform
- New wing doors added & installed

**Miscellaneous:**

- Custom tool storage and parts bins by the factory in engine room
- Waxed waterline and up 9/2014

\*\*\*\*\*  
 \*\*\*\*\*  
 \*\*\*\*\*

## Accommodations

- Master Stateroom (King Bed)

- VIP Stateroom (Bow - Queen Bed)
- Guest Staterooms Port/Starboard (Midship - Queen or or converts to single beds)
- 5th Stateroom (Bunk Beds)

---

## Exterior Finish / Construction

---

- Complete paint job by Luu Painting at LMC. 4 coats Matterhorn White by Allgrip **UPGRADE**
- All Stainless was removed, polished and re-installed. **UPGRADE**
- All side windows were removed and re installed **UPGRADE**
- Three new lighted yacht sign name boards installed 2013 **UPGRADE**
- USCG towing lights installed for legal towing at night **UPGRADE**
- Custom stainless mooring whip sockets on both sides of hull and aft swim platform **UPGRADE**
- Blister-Resistant Vinylester Resin In Hull Bottom Skin Coat

---

## Hull & Deck Features

---

- (4) 100 AMP Glendenning shore cords, (2 ea) on Bow & (2 ea) on transom, switching system in Crews Qtrs. **UPGRADE**
- Hydraulic stabilizers - ZERO SPEED - **New 2012 UPGRADE**
- Bow thruster 16 inch 45 hp hydraulic - **New 2012 UPGRADE**
- All bilge pumps area have a 24V-DC system & a 110-AV system. Each pump is in controlled by it's own separate float switch **UPGRADE**
- Remote-controlled searchlight
- Three freshwater wash down quick disconnect outlets
- Fog bell
- Dual air horn
- Propellers, Nibral high-performance
- Stainless propeller shafts
- Foredeck seat with storage cushions and cover
- Bustle door to crew quarters
- Handheld shower
- Swim platform with re-boarding ladder
- Windlass 6000 lb. with 450 foot chain

---

## Aft Deck

---

- Aft deck has a built in deep freezer or refrigerator option by flipping a switch **UPGRADE**
- **New** Teak deck **UPGRADE**
- **New** Teak steps, port and starboard to swim deck **UPGRADE**
- Overhead lighting (All LED now) **UPGRADE**
- Oval teak dining table w/6 chairs **UPGRADE**
- Salon door - manual
- Freshwater wash down outlet
- Stereo speakers with volume control
- Stainless steps to bridge
- Doors to side walkway decks (port & starboard)

---

## Interior

---

- **Custom** Fiddleback Makore wood paneling w/ Custom Walnut stain **UPGRADE**
- Entire vessel Lutron lighting control system was replaced and updated to LED lighting **UPGRADE**
- Most of the vessel's Chiller lines were re-insulated by Essex insulation in 2012 **UPGRADE**
- All air handlers throughout the vessel were replaced except for about 4 of them **UPGRADE**
- New Carpet and pad throughout entire vessel **UPGRADE**
- **Custom** storage areas for owners personal items **UPGRADE**
- Remodeled crew quarters for 5 crew with their own galley **UPGRADE**

---

## Salon

---

- Carpeting, **New** **UPGRADE**
- Entertainment center with 40" flatscreen TV, HD SAT receiver & Blu-ray DVD player, **New** **UPGRADE**
- **Custom** Fiddleback Makore wood paneling w/ Custom Walnut stain **UPGRADE**
- **Custom** coffee table **UPGRADE**
- **Custom** mirrored ceiling **UPGRADE**
- Stationary Roman shades with crown molding and blinds
- Fixed frame-less windows with tinted safety glasses (Just removed & re-installed)
- Sunken bar to port w/ice maker, refrigerator, bottle and glass storage w/3 ea barrel chairs
- Couches to port & starboard

## Dining Room

---

- Carpet, **New UPGRADE**
- **Custom** built lighted cabinet between salon & dining room **UPGRADE**
- **Custom** Dining table, seats 8 plus **UPGRADE**
- **Custom** Buffets, (port & starboard) **UPGRADE**
- Beveled mirrored ceiling
- China storage cabinets in custom built cabinet

## Open Galley/Dinette

---

- **Custom** Fiddleback Makore wood paneling w/**Custom** Walnut stain **UPGRADE**
- **Custom** half-moon raised dinette w/6 ea chairs **UPGRADE**
- **Custom** lighted wine glass storage on fwd wall w/glass doors **UPGRADE**
- Hardwood flooring **UPGRADE**
- Granite countertop with dual integral sink and storage cabinets w/slide out shelves **UPGRADE**
- Sub-Zero Freezers, pull drawers (2 Ea) - Separate unit **UPGRADE**
- **New** compressor for Sub Zero **UPGRADE**
- Icemaker, Kitchenaid **New UPGRADE**
- Sub-Zero Refrigerator w/freezer drawers
- Wood blinds
- Fixed frameless windows tinted safety glasses
- Range/Oven, (4) burner cooktop, Kitchenaid
- Microwave/convection, Kitchenaid Superba
- Insta Hot, Franke Triflow,
- Dishwasher, Kitchenaid Whisper Quiet Ultima
- Disposal, Kitchenaid
- Trash Compactor, Kitchenaid
- Faucets, Franke, Black & Chrome
- Stereo speakers
- Stairwell to bow VIP stateroom, Fwd

## Bow VIP State Room (Fwd)

---

- Carpeting, **New UPGRADE**
- **New** flat-screen TV, HD receiver, Apple TV, Airplay & Blu-ray DVD player **UPGRADE**
- **Custom** Fiddleback Mokore wood paneling w/**Custom** Walnut stain **UPGRADE**

- Queen berth w/upholstered headboard and storage underneath
- Mattress, pillows
- Crown molding on AC soffits
- Cedar lined hanging locker with door and automatic light
- Full length mirror
- (2) Overhead hatches
- Private access to head
- Built-in dresser drawers

---

## Bow VIP Head

---

- Stone flooring
- Vanity w/stone surface countertop and integral sink over storage cabinets (wood)
- Upper storage cabinet with mirrored doors
- Shower & automatic sump pump
- Towel bars
- Electric freshwater toilet
- Recirculating fan w/air freshner
- Separate cosmetic vanity

---

## Day Head (Main Level)

---

- Faux marble flooring **UPGRADE**
- Stone surface countertop and integral sink over wood storage cabinets
- Mirror
- Towel bar
- Freshwater toilet
- Recirculating fan
- AC and DC light fixtures

---

## Lower Companionway

---

- Carpeting on steps only, **New UPGRADE**
- Marble flooring
- Access to each of the four staterooms
- Linen locker
- Washer/Dryer

---

## Master Stateroom

---

- Carpeting, **New UPGRADE**
- Entertainment center with NEW flat-screen TV, HD receiver, Apple TV, Airplay & Blu-ray DVD player **UPGRADE**
- **Custom** Fiddleback Makore wood paneling w/ **Custom** Walnut stain **UPGRADE**
- Decorative mirror forward bulkhead
- Roman shades with crown molding
- King berth with upholstered headboard and storage drawers underneath
- Nightstands, port and starboard
- Desk to starboard & couch to port side
- Cedar lined hanging walk-in closet automatic lights
- Built in dressers
- Full length mirror
- Stereo speakers
- AC and DC light fixtures
- Private access to master head

---

## Master Head

---

- Stone flooring
- His and hers integral sinks with stone surface countertops over storage cabinets (wood)
- Upper storage cabinets with mirrored doors
- Tub with shower & whirlpool jets
- Towel bars
- Freshwater toilets
- Recirculating fans with air freshener

---

## Midship Starboard VIP Stateroom

---

- Carpeting, **New UPGRADE**
- **New** flat-screen TV, HD receiver, Apple TV, Airplay & Blu-ray DVD player **UPGRADE**
- **Custom** Fiddleback Makore wood paneling w/ **Custom** Walnut stain **UPGRADE**
- Twin berths converts to queen with upholstered headboards and storage underneath
- Mattress, pillows
- Roman shades with crown molding
- Nightstand with drawers
- Cedar lined hanging locker with door and automatic light
- Full length mirror
- Ventilating port light
- Private access to head

---

## Midship Port VIP Stateroom

---

- Carpeting, **New UPGRADE**
- **New** flat-screen TV, HD receiver, Apple TV, Airplay & Blu-ray DVD player **UPGRADE**
- **Custom** Fiddleback Makore wood paneling w/ **Custom** Walnut stain **UPGRADE**
- Decorative mirror aft bulkhead
- Twin berths converts to queen with upholstered headboards and storage underneath
- Mattress, pillows
- Roman shades with crown molding
- Nightstand with drawers
- Cedar lined hanging locker with door and automatic light
- Full length mirror
- Ventilating port light
- Private access to head

---

### Midship Bunk Stateroom (5th Strm)

---

- Carpeting, **New UPGRADE**
- **Custom** Fiddleback Makore wood paneling w/**Custom** Walnut stain **UPGRADE**
- **New** flat-screen TV, HD receiver, Apple TV, Airplay & Blu-ray DVD player **UPGRADE**
- Decorative mirror aft bulkhead
- (2) Each single beds
- Mattress, pillows
- Roman shades with crown molding
- Nightstand with drawers
- Cedar lined hanging locker with door and automatic light
- Full length mirror
- Ventilating port light

---

### Guest Heads Midship (3 Each)

---

- Ensuite VIP Heads for Port & Starboard Rooms - Bunk Room Head is Accessed Across Companionway Hallway
- Stone flooring
- Stone surface countertop and the integral sink over storage cabinets (wood)
- Upper storage cabinet with mirrored doors
- Stall shower w/door and automatic sump pump (port)
- Tub with shower sliding, door and automatic sump pump (starboard)
- Towel bars
- Freshwater toilet
- Recirculating fan



---

## Pilothouse

---

- VKool for front windshield **UPGRADE**
- Single captain chair, Pompanette **New UPGRADE**
- ZERO SPEED STABILIZER controls **UPGRADE**
- **New** Remote controlled spotlight on aft of mast to light up the tow for overnight towing **UPGRADE**
- DEC electronic controls Detroit diesel
- American bow thruster controls
- Safety glass windshields
- Wood plank flooring with urethane finish
- Cruising L-shaped seating area w/teak table
- Steps to starboard hallway to access Galley (fwd) or Salon (Aft)
- Steps to access Flybridge
- Electric windshield wipers/washers with controls
- Hydraulic power assisted steering
- Single lever electronic clutch and throttle controls with engine synchronizer and back up controls
- Stereo speakers

### Electronics:

- **New Custom** built Nobletec computer system w/(1) 120V system & identical 12V system as backup. Waterproof 17" **UPGRADE**
- (2) Stealth screens **New 2012 UPGRADE**
- Color daylight touchscreens w/operation from Crews Qtrs **UPGRADE**
- **New** Icom 604 VHF radio w/remote mic **UPGRADE**
- **New** Icom 802 SSB & HAM radio **UPGRADE**
- **New** Simrad AP70 Commercial Autopilot w/rudder feedback w/Fluxgate & commercial gyro compass **UPGRADE**

- **New** Furuno FCV 1200 commercial sounder & new transducer **UPGRADE**
- **New** Furuno GPS separate unit by stairs to Flybridge **UPGRADE**
- Furuno wind direction display
- Furuno F1-50 Digital depth, speed, & log
- Furuno black box radar ARPA, 96NM
- Furuno color depth sounder
- Furuno AIS system
- Furuno Nevtex NX 500
- Compass w/light

## Flybridge & Bridge Deck

---

- The flybridge is fully enclosed now and air conditioning was added **UPGRADE**
- (2) **New** custom teak tables installed on flybridge.
- All soft goods replaced **UPGRADE**
- (2) **New** Pompanette captains chairs installed **UPGRADE**
- Marquipt Crane rebuilt, 2500lb **UPGRADE**
- 17' Novurina (2102) hard bottom inflatable with Garmin color GPS and depthsounder. Also a Fusion stereo system with waterproof remote on helm **UPGRADE**
- Engine painted White to match boat **UPGRADE**
- **New** fiberglass storage boxes added to upper deck **UPGRADE**
- **New** LED mast lights **UPGRADE**
- **Custom** teak tables to port & starboard **UPGRADE**
- ZERO SPEED STABILIZER Controls **UPGRADE**
- **New** Remote controlled spotlight on aft of mast to light up the tow for overnight towing **UPGRADE**
- (2) Search lights ACR RCL 100
- DEC electronic controls Detroit diesel
- Hydraulic power assisted steering
- Wet bar with a refrigerator and icemaker, bottle and glass storage and cover
- Stereo speakers with volume control
- Bow thruster controls
- L-shaped seating to port & starboard
- Secondary shifter & bow thruster control to starboard w/rudder control (wing station)
- (2) Each sunpads on bridge deck
- Control station w/dimmable lighted Instruments and cover
- Radar arch

- Mast on arch

## Electronics:

- **New Custom** built Nobletec computer system w/(1) 120V system & identical 12V system as a backup. Waterproof 17" **UPGRADE**
- (2) Stealth screens – **New 2012 – UPGRADE**
- Color daylight touch screens w/operation from Crews Qrts **UPGRADE**
- **New** Icom 604 VHF radio w/remote mic **UPGRADE**
- **New** Simrad AP70 Commercial Autopilot w/rudder feedback w/Fluxgate & commercial gyro compass **UPGRADE**
- **New** Furuno FCV 1200 commercial sounder & new transducer **UPGRADE**
- Furuno wind direction display
- Furuno F1-50 Digital depth, speed, & log
- Furuno black box radar ARPA, 96NM
- Compass w/light

## Audio Video

- **New** 6 camera security system, 4 cameras are PTZ movable and can be viewed by monitors at Pilothouse, Flybridge and Captain's Cabin monitors. Further all can be viewed and controlled by your phone away from the vessel is connected to the internet. All record to an onboard DVR and history can both be viewed onboard or from your phone **UPGRADE**
- Dual station Crestron switching controls for Pilothouse and Flybridge monitors that include a dedicated Direct TV receiver **UPGRADE**
- **New** KVH HD7 satellite receiver with tri-Americas LMB. All TV's in this vessel have both an HD USA receiver and a Latin America receiver **UPGRADE**
- All Staterooms have Denon surround sound **UPGRADE**
- All staterooms have Apple TV, Airplay, and DVD players, including crew quarters **UPGRADE**
- **New** WAVE Wi-Fi antenna system **UPGRADE**
- **New** Apple Mac Mini computer system with Thousands of songs and an unknown amount of movies accessible from any stateroom. Like a Crestron Kalidiscscape **UPGRADE**
- All Airplay onboard can be controlled by your phone, throughout the vessel with three linked routers **UPGRADE**
- All TV's upgraded to flat screens **UPGRADE**
- Back-up battery for AV equipment

## Crew's Companionway

- Flooring
- Wood paneling

- Doors to captain's & crew's quarters
- Door to engine room w/ window
- Bustle door to sport deck
- Washer/Dryer

---

## Crews Quarters - Customized 2012

---

- Captain Qtrs to port w/Queen bed & private head **UPGRADE**
- Crew's Qtrs to starboard w/over under bunks (2 beds) **UPGRADE**
- 3rd Crew room port side flip down bed in Galley **UPGRADE**
- Full walk in Galley **UPGRADE**
- Carpeting, **New UPGRADE**
- **Custom** wood paneling
- Cedar lined hanging locker w/door and automatic light
- Full length mirror
- MATV outlet
- Stereo speakers
- Ventilating port light

---

## Crew's Heads - 2 Each

---

- Vinyl wood flooring
- Solid surface countertop and the integral sink over storage cabinets
- Mirror
- Stall shower w/bifold door and automatic sump pump
- Towel bars
- Freshwater toilet
- Recirculating fan

---

## Engine Compartment & Bilge

---

- 1250 GPD water maker - Watermakers Inc. **UPGRADE**
- Twin diesel fresh water-cooled main engines with Marine gears, neutral interlocks, hour meters, alternators, fuel filters, seawater strainers and exhaust silencers
- Water cooled exhaust System
- Fixed fire extinguishing system for engine compartment with automatic and remote manual controls
- DC bilge blowers
- Automatic electric bilge pumps

- AC air compressor
- Macerator pump
- Holding tank
- Oil changing system
- (4) Fuel priming pumps

## Mechanical / Engine Compartment

- **New** TRAC ZERO SPEED STABILIZERS with winglets 8/2012 cost of 200K operation from either main engine or a power pack via a frequency drive onboard from either generator **UPGRADE**
- **New** complete hydraulic bow thruster system and **New** hydraulic windlass motor **UPGRADE**
- Both engines were torn down in 2011 and turbos checked all EUP injectors replaced and entire cooling system sent out to Broward radiator. Both seawater pumps rebuilt **UPGRADE**
- Both generators have new injectors, seawater pumps and complete new spares onboard. Both cooling systems were sent out and re-installed, all inside box insulation was replaced both have approx. **UPGRADE**
- Both seawater AC pump and all lines replaced and AC chiller pump replaced 6-2014. You do not have to add water to this system, it is tight. Two Complete rebuilt pumps stored onboard ready for install when required **UPGRADE**
- Both genset thru hulls and all hoses replaced 8/2012 **UPGRADE**
- **New** hydraulic system seawater pump 2012 and new spare onboard **UPGRADE**
- Custom tool storage and parts bins by the factory in engine room **UPGRADE**
- **Engines:** Twin Detroit Diesel 16V2000, 1800HP, Engine Hours: Mains-1650
- **Generator:** Onan 55kw, Generator Hours: Starboard-2525 Port-2780
- Engines & generator just had full service in 10/2014 **UPGRADE**
- W1 was completed at 1000 hours **UPGRADE**
- **Stabilizers:** Trac Zero Speed Hydraulic, NEW 2012 **UPGRADE**
- **Bow Thruster:** American, 16" 45HP Hydraulic, NEW **UPGRADE**
- **Marine Gear:** Detroit Diesel DD6600DC: Ratio 4.72:1
- **Propellers:** Michigan wheel Nibral 6-blades
- **Propeller Shaft:** 4 1/2' Armco Aquamet no. 22 HS
- **Water Makers:** 1250 GPD - Watermakers, Inc
- **Water Heater:** A.O. Smith ELJ-50
- **Steering System:** Hynautic K-8Fuel Priming Pump: Reverso GP301 24VDC
- **Fuel Transfer Pump:** Viking GPB0514116-DC
- **Fresh Water Pump:** (2) Headhunter, Jetpaq HHJQ4-230
- **Water Filtration:** Reverse Osmosis T010X42A
- **Sewage System:** Headhunter, Royal Flush

- **Davit:** Marquipt Tender Lift 2500, **(Just rebuilt)**
- **Windlass:** Maxwell VWC 6000

### Engine Compartment & Bilge:

- DC bilge blowers
- Twin diesel fresh water-cooled main engines with Marine gears, neutral interlocks, hour meters, alternators, fuel filters, seawater strainers and exhaust silencers
- Water cooled exhaust system
- Fixed fire extinguishing system for engine compartment with automatic and remote manual controls
- Automatic electric bilge pumps
- AC air compressor
- Macerator pump
- Holding tank
- Oil changing system
- (4) Fuel priming pumps

## Electrical System

---

- Generators: (2) Onan 55kw
- Shore Power: Glendinning - Retractable (4) ea. 100AMP cables = (2) ea. Bow & (2) ea. Stern **UPGRADE**
- Batteries: (6) Geltec 12V BCI Group Size 8D, New 2012 **UPGRADE**
- Battery Charger: Mastervolt Mass 24/75
- Searchlights: (2) ACR RCL 100D
- All bilge pumps area have a 24V-DC system & a 110-AV system. Each pump is controlled by it's own separate float switch.

## Underwater Gear

---

- (4) Underwater Lights

## Exclusions

---

- Owners Artwork
- Personal Items

## Exclusions

---

Owner's personal belongings.

## Disclaimer

---

The Company offers the details of this vessel or yacht in good faith but cannot guarantee or warrant the accuracy of this information nor warrant the condition of the vessel. A buyer should instruct his representatives, agents, or his surveyors, to investigate such details as the buyer desires validated. This vessel or yacht is offered subject to prior sale, price change, or withdrawal without notice.

# PHOTOS

**Port Profile**



**Aft Profile**



**Aft Deck**



**Aft Deck**



**Aft Deck Seating**



**Stairwell To Upper Deck**





Salon To Aft



Salon



Salon



Salon w/Entertainment Center



Salon



Formal Dining Table



**Open Galley Dinette**



**Galley**



**Companionway To Bow VIP Stateroom**

**Galley**



**VIP Guest Stateroom Forward**



**Bow VIP Head**





**Bow VIP Head**



**Master Stateroom Foyer**



**Master Stateroom**



**Master Stateroom**



**Master Stateroom**



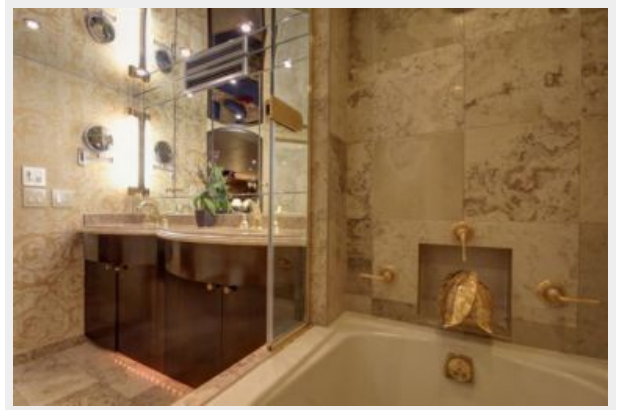
**Master Stateroom**



**Master Head**



**Master Head**



**Guest Shower/Day Head**

**Washer/Dryer**





**Midship Bunk Stateroom (5th Strm)**



**Midship Staterooms Entrance**



**Midship Starboard Stateroom**



**Midship Starboard Head**



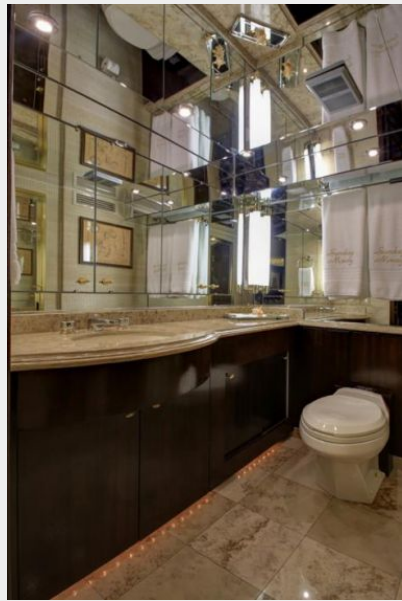
**Midship Starboard Head**



**Midship Port Stateroom**



**Guest Head**



**Pilothouse**



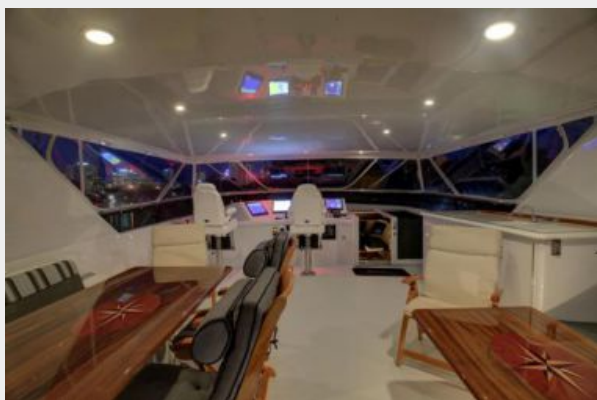
**Hynautic Steering Wheel**



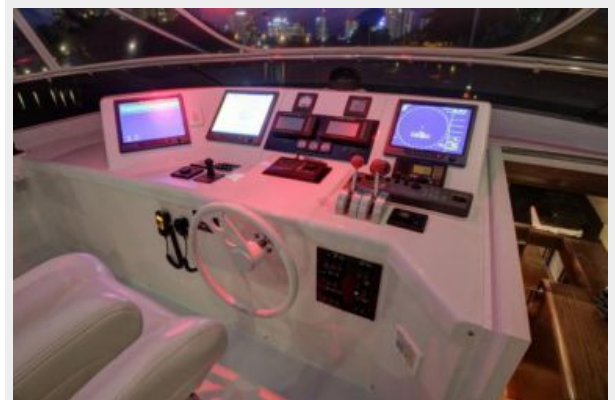
**Bridge / Helm**



**Bridge Overview**



**Electronics**





**Bridge Deck**



**Dual Bridge Chairs**



**Underwater Lights**



**SAT TV Radar**



**Bow Seating**



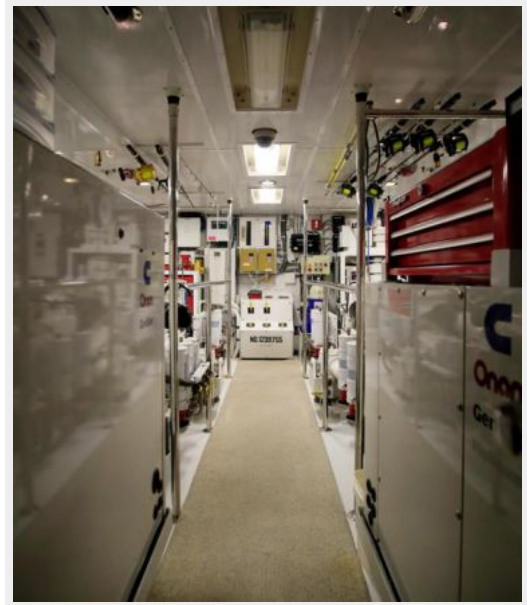
**Tender**



**SAT TV / Radar**



**Engine Room**



**Engine Room**



**Engine Room**



**Engine Room**



**Engine Room**





**Engine Room**



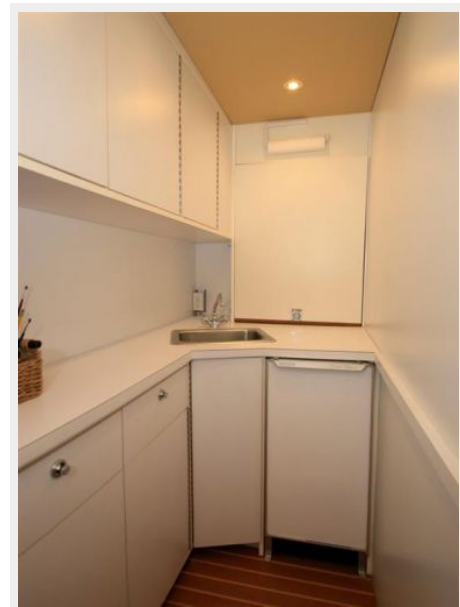
**Engine Room**



**Engine Room**



**Crews Quarters Galley**



**Crew Quarters Bunks**



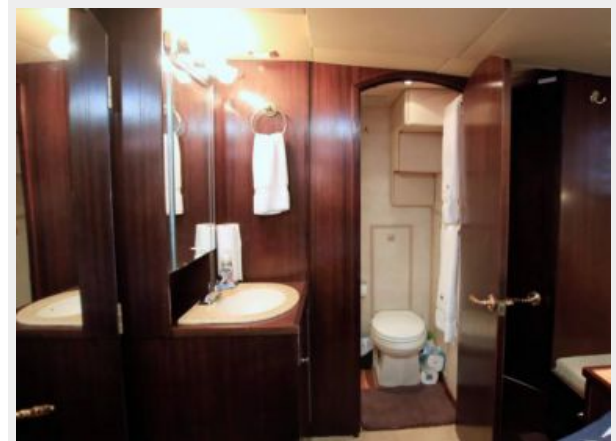
**Crews Quarters Head**



**Crew Quarters Stateroom**



**Crew Quarters Stateroom**



---

# CONTACTS

---

Andrey Shestakov, leading yacht broker of the sales department of Shestakov Yacht Sales Inc. Shestakov Yacht Sales Inc., the official representative of the Miami/Fort Lauderdale FL headquarters.

---

## Contact details

---

Email: [andrey@shestakovyachtsales.com](mailto:andrey@shestakovyachtsales.com)

Web: [shestakovyachtsales.com/en/](http://shestakovyachtsales.com/en/)

---

## Telephones

---

USA: +1(954)274-4435

---

## Office hours

---

Monday – Saturday: **9:00 - 21:00** EDT

Sunday: **closed**

---

## Address

---



Harbour Towne Marina, 850 NE 3rd St,  
STE 213, Dania, FL 33004