

NO NAME — OCEAN YACHTS



Судостроитель: [Ocean Yachts](#)

Год постройки: 1990

Модель: Катер для спортивной рыбалки

Цена: **ЦЕНА ЯХТЫ ПО ЗАПРОСУ**

Местонахождение: United States

Длина общая: 63' 0" (19.20m)

Ширина: 17' 8" (5.38m)

Макс. осадка: 4' 8" (1.42m)

Крейс. скорость: 27 Kts. (31 MPH)

Макс. скорость: 30 Kts. (35 MPH)

Купить **NO NAME** — **Ocean Yachts** а также выбрать подходящую вам яхту из нашего каталога яхт вам поможет опытный яхтенный брокер Андрей Шестаков. На сегодняшний день компания **Shestakov Yacht Sales Inc.** имеет большое количество яхт в собственном списке продаж, а также тесно сотрудничает со всеми крупными яхтенными производителями по всему миру.

Для того чтобы купить яхту **NO NAME** — **Ocean Yachts** а также проконсультироваться по любому вопросу связанному с покупкой, продажей, чартером яхт позвоните по телефону **+7(918)465-66-44**.

ОГЛАВЛЕНИЕ

ОГЛАВЛЕНИЕ	2
ХАРАКТЕРИСТИКИ	5
Обзор	5
Основная информация	6
Размеры	6
Скорость, вместимость и масса	6
Размещение	6
Корпус и палуба	6
Информация о двигателе	6
ПОДРОБНОЕ ОПИСАНИЕ	7
Vessel Walkthrough	7
Broker Remarks	11
Исключения	11
Отказ от ответственности	12
ФОТОГРАФИИ	13
Profile 2	13
Profile 3	13
Profile 4	13
Transom	13
Transom 2	13
Transom 3	13
Transom 4	14
Aft	14
Aft 2	14
Cockpit Seating	14
Cockpit View	14
Starboard View	14
Starboard View 2	15

Starboard	15
Bow	15
Salon	15
Salon Seating	15
Salon Seating 2	15
Salon Teak Table	16
Galley	16
Galley 2	16
Galley 3	16
Galley Refridgerator	16
Galley Stove & Sink	16
Galley Granite Countertop	17
Wood Flooring	17
Walkway	17
Wood Flooring 2	17
Walkway 2	17
Textured Wall	17
Ceiling Lighting	18
Flooring	18
Guest Stateroom Head	18
Guest Stateroom	18
VIP Stateroom Head	18
VIP Stateroom	18
Master Stateroom	19
Master Stateroom 2	19
Master Stateroom 3	19
Master Stateroom 4	19
Master Stateroom Head	19
Flybridge	19

Flybridge 2	20
Flybridge Seating	20
Flybridge Seating 2	20
Seating w/ Drop-Leaf Table	20
Flybridge Lighting	20
Helm	20
Helm Controls	20
Electronics	20
Engine	21
Engine 2	21
Engine 3	21
Engine 4	21
Engine 5	21
Engine 6	21
Engine 7	21
Engine 8	21
КОНТАКТЫ	22
Контактная информация	22
Телефоны	22
Время работы	22
Адрес	22

ХАРАКТЕРИСТИКИ

Обзор

Completely NEW and redesigned Galley including appliances, stove microwave refrigerator dishwasher.

New 50 inch retractable Flat Screen on Satellite.

Two month overhaul on engines and generators (no rebuild)!!

New Exterior Paint.

New Inside Headliners.

New Electric.

New LED Lighting.

Redone Plumbing.

Rebuilt/Replaced AC units.

New Marble Floors.

Granite counters, wood floors.

New Canvas.

All new mattresses.

New Wallpaper.

New High end leather custom furniture.

New varnish.

New soft goods

Основная информация

Тип судна: Катер для спортивной рыбалки

Подкатегория: Катер для спортивной рыбалки

Модельный год: 1990

Год постройки: 1990

Страна: United States

Открытая палуба мостика: Да

Размеры

Длина общая: 63' 0" (19.20m)

Ширина: 17' 8" (5.38m)

Макс. осадка: 4' 8" (1.42m)

Скорость, вместимость и масса

Крейс. скорость: 27 Kts. (31 MPH)

Макс. скорость: 30 Kts. (35 MPH)

Водоизмещение: 740000 Pounds

Вместимость воды: 300 Gallons

Вместимость сточного бака: 80 Gallons

Объем топливного бака: 1200 Gallons

Размещение

Всего кают: 4

Всего ком. состава: 3

Корпус и палуба

Материал корпуса: Fiberglass

Информация о двигателе

Двигатели: 2

Производитель: Detroit Diesel

Модель: 12V 92'S

ПОДРОБНОЕ ОПИСАНИЕ

Vessel Walkthrough

63' Ocean Sport Fisherman High-impact sport fisherman made good on Ocean Yachts promise of speed, luxury and hardcore fish ability. The interior is arranged with four staterooms, expansive salon and galley, amidships master, spacious VIP bow stateroom and three heads. Note glass-enclosed rod locker in hallway. Ample cockpit and the flybridge is huge.

Salon

- L-shaped sofa to port with teak hi-lo table
- Window treatments are custom to boat with pleated fabric valences and hunter Douglas blinds
- Modern wall covering, upholstery and soft goods that match from bow to stern
- Both sofas finished in leather with custom pillows
- Straight sofa opposite side
- NEW WOOD FLOOR throughout vessel

Galley

- Large teak cabinet contains side by side refrigerator and freezer
- Overhead cabinet with stemware rack
- NEW Galley wood flooring
- Microwave
- Instant hot water
- Princess stove and oven
- Double stainless sinks
- Direct and indirect lighting
- Adjacent cabinet has Corian countertop, drawers, trash compactor
- Beautiful teak cabinetry with ample storage throughout galley
- Cabinetry above dinette serves as an entertainment center for salon
- Dishwasher
- Icemaker

- NEW Granite countertops throughout

Master Stateroom

- Located amidships
- Queen island berth
- Mirrored vanity to port with makeup drawers, lighting, cabinet and drawers with a recessed stool
- Opposite berth is an entertainment center, cedar-lined hanging lockers and storage drawers
- Built-in night tables on both sides of queen

Master Head

- Ensuite head for master with separate shower stall
- Mirrored vanity and Corian washbasin
- Golden teak wall accents and overhead hatch w/ screen
- Vacuflush head

VIP Stateroom

- Queen Berth forward and athwart ships
- (4) hanging lockers w/ louvered doors
- Flush-mount entertainment center above counter
- Beautiful teak joinery throughout stateroom
- Ensuite head and shower accessed forward in forepeak
- Corian countertop with storage drawers and cabinet storage beneath
- (2) overhead hatches with foredeck access

Guest Staterooms

- Both staterooms have bunk arrangement
- Washer and dryer accessed via companionway
- Hanging lockers and storage drawers in both guest staterooms

Guest Head

- Guest head and shower serve both guest staterooms with access via starboard companionway

Flybridge and Helm

- Large helm console with flush-mounted electronics and massive storage beneath
- Stainless grab rails mounted on fiberglass hardtop
- Full wet bar with refrigerator to starboard of helm console
- Seating forward of helm console will seat 8-10 adults with drop-leaf table for entertaining
- Truly a perfect area for cruising, fishing or just entertaining
- Custom fiberglass electronics box molded into fiberglass hardtop above helm
- Three Murray Brothers helm chairs are mounted aft of console and painted in white Imron
- Entire flybridge is faired and painted in white Imron
- Flybridge is enclosable in EZ2CY glass

Electronics

- Simrad AP-25 Auto Pilot
- Icom IC-M125 VHF on bridge
- Garmin 2010 C Chart Plotter
- Furuno Color Video Sounder FCV-292
- Furuno Radar
- Flybridge speakers
- 4 TVs, surround sound via Bose system
- Satellite TV
- Micro commander controls
- Bow thruster controls
- Icom IC-M120 VHF (tower)

- CD/Stereo on bridge
- Data marine depth sounder
- ACR spotlight with remote

Electrical System

- 12V DC/220V AC system
- Custom drip pans for gensets
- Cablemaster system both port and starboard
- Two Westerbeke 21kW gensets 1355 Hours 422 Hours
- (4) new 8D and genset starting batteries
- Flybridge electronics battery with charger
- Automatic charger

Engine Room and Mechanical Equipment

- Bow thruster w/ separate batteries and charger
- (1) spare shaft
- Engine syncs
- Automatic halon fire extinguishing system
- Hynautic hydraulic steering
- Acoustical and thermal insulation
- (2) extra props
- (5) Marine Air reverse cycle units
- Airseps
- New 300 gal holding tank
- Bennett tabs
- Oil exchanger system

Cockpit

- Cockpit accessed from salon via solid wood sliding door
- Custom fold-down benches beneath bolsters on both starboard and port side for seating 6-8 adults

- Custom Corian table in center of cockpit for cruising entertainment
- Transom gate for access to swim platform
- Custom teak covering boards with rod holders
- Cockpit sole has been reinforced and painted with Imron non-skid
- Rupp Triple Spreaders
- Custom Pipe welders Tuna Tower w/ buggy top (hinged and removable for easy indoor storage)
- Tower was designed to sit over cockpit and vessel can be run in this position
- In-deck fishbox and livewell
- Fresh/Raw water wash-downs
- Aft of house is a tackle center, bait freezer, engine room access and second engine control station
- Rupp gold anodized rocket launchers on both aft tower legs and aft rail on flybridge

Hull

- Custom teak transom
- Custom swim platform and transom door

Deck Equipment

- Ideal electric windlass
- Cockpit sun cover
- Marquipt electric dinghy davit

Broker Remarks

This 63' Ocean "NO NAME" is a great opportunity, she shows well and is hands-down the nicest 63 on the market. She is ready to run. Bring all offers!!!

Исключения

При продаже яхты исключаются личные вещи владельца.

Отказ от ответственности

Компания предоставляет описание судна или яхты добросовестно, но не может гарантировать точность этой информации, а также не ручается за техническое состояние. Покупатель должен проинструктировать своих агентов или оценщиков исследовать представленную информацию более подробно, по собственному желанию. Продажа судна или яхты, изменение цены или снятие с продажи будет происходить без предварительного уведомления.

ФОТОГРАФИИ

Profile 2



Profile 3



Profile 4



Transom



Transom 2



Transom 3



Transom 4



Aft



Aft 2



Cockpit Seating



Cockpit View



Starboard View



Starboard View 2



Starboard



Bow



Salon



Salon Seating



Salon Seating 2



Salon Teak Table



Galley



Galley 2



Galley 3



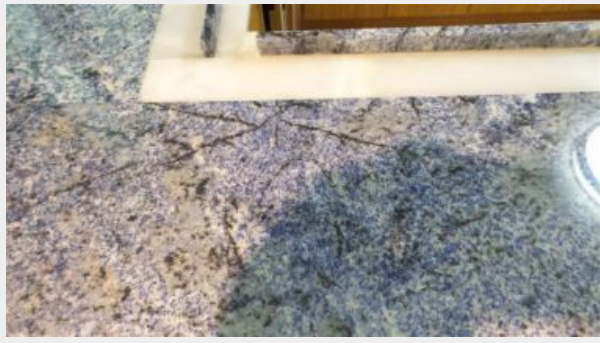
Galley Refridgerator



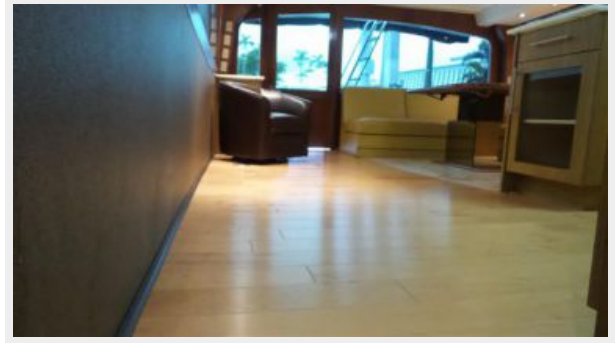
Galley Stove & Sink



Galley Granite Countertop



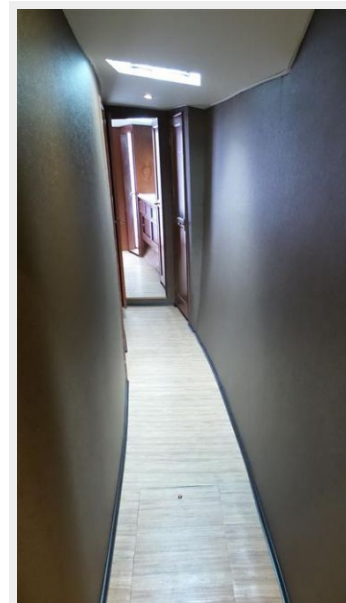
Wood Flooring



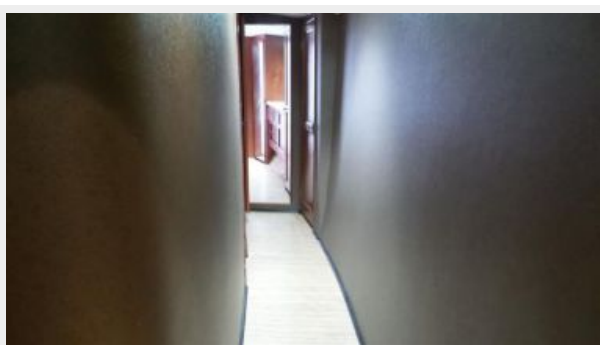
Wood Flooring 2



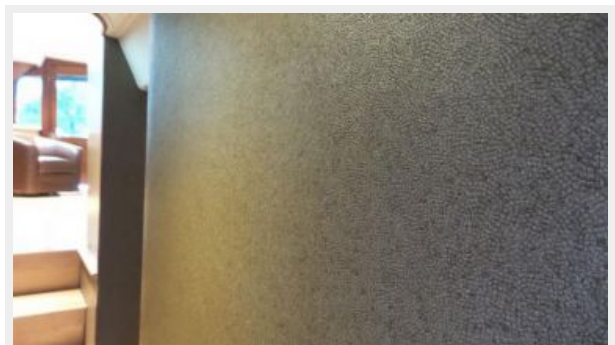
Walkway



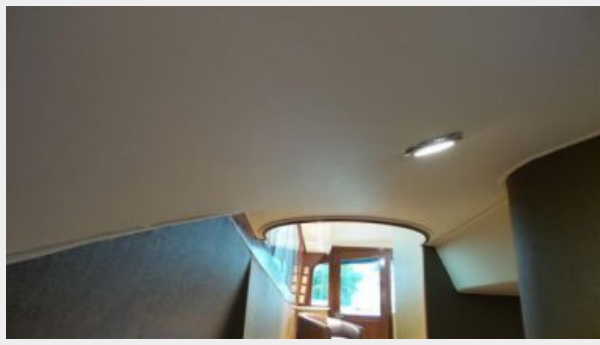
Walkway 2



Textured Wall



Ceiling Lighting



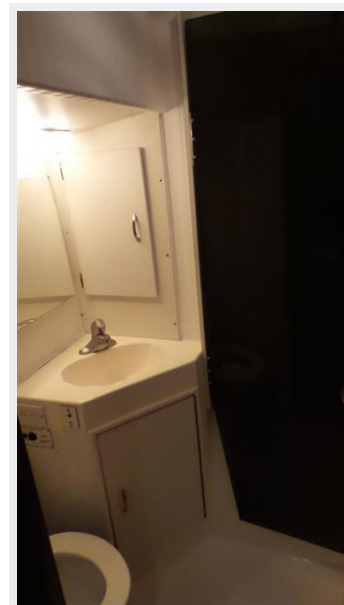
Flooring



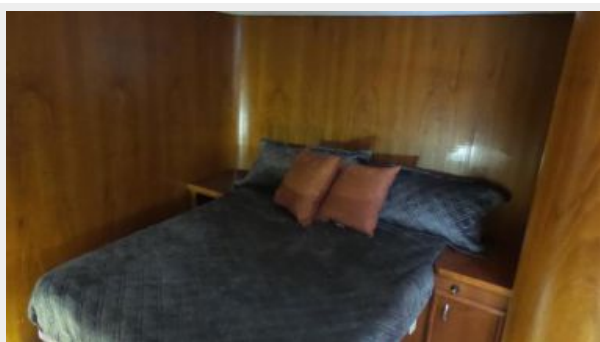
Guest Stateroom



Guest Stateroom Head



VIP Stateroom



VIP Stateroom Head



Master Stateroom



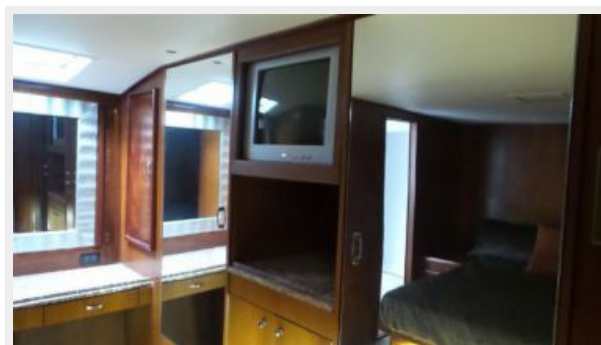
Master Stateroom 2



Master Stateroom 3



Master Stateroom 4



Master Stateroom Head



Flybridge



Flybridge 2



Flybridge Seating



Flybridge Seating 2



Seating w/ Drop-Leaf Table



Flybridge Lighting



Helm



Helm Controls



Electronics



Engine



Engine 2



Engine 3



Engine 4



Engine 5



Engine 6



Engine 7



Engine 8



КОНТАКТЫ

Андрей Шестаков (Andrey Shestakov) – ведущий яхтенный брокер отдела продаж яхт и судов компании Shestakov Yacht Sales Inc. Официальный представитель Shestakov Yacht Sales Inc. для русскоговорящих клиентов в центральном офисе компании в Майами/Форт Лодердейл/Флорида/США.

Контактная информация

Email: andrey@shestakovyachtsales.com

Web: shestakovyachtsales.com

Телефоны

Краснодарский край: **+7(918)465-66-44**

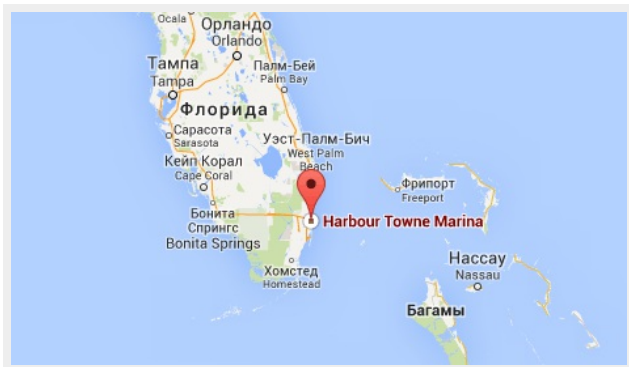
США, Майами, Флорида: **+1(954)274-4435**

Время работы

Понедельник – Суббота: **9:00 - 21:00**
EDT

Воскресенье: **Закрето**

Адрес



Harbour Towne Marina, 850 NE 3rd St,
STE 213, Dania, FL 33004