

MON PLAISIR — HEESEN YACHTS



Builder: HEESEN YACHTS

Year Built: 2008

Model: Motor Yacht

Price: PRICE ON APPLICATION

Location: France

LOA: 153' 3" (46.70m)

Beam: 27' 11" (8.50m)

Min Draft: 8' 3" (2.50m)

Cruise Speed: 12 Kts. (14 MPH)

Max Speed: 16 Kts. (18 MPH)

Our experienced yacht broker, Andrey Shestakov, will help you choose and buy a yacht that best suits your needs **MON PLAISIR — HEESEN YACHTS** from our catalogue. Presently, at Shestakov Yacht Sales Inc., we have a wide variety of yachts available on our sale's list. We also work in close contact with all the big yacht manufacturers from all over the world.

If you would like to buy a yacht **MON PLAISIR — HEESEN YACHTS** or would like help answering any questions concerning purchasing, selling or chartering a yacht, please call **+1(954)274-4435**

TABLE OF CONTENTS

TABLE OF CONTENTS	2
SPECIFICATIONS	3
Overview	3
Basic Information	3
Dimensions	3
Speed, Capacities and Weight	3
Accommodations	4
Hull and Deck Information	4
Engine Information	4
PHOTOS	5
CONTACTS	10
Contact details	10
Telephones	10
Office hours	10
Address	10

SPECIFICATIONS

Overview

The owner spared nothing in build; interior hardware and panel trimmings include Sterling Silver, Elmo leather finish, Calacatta marble, American walnut wooden flooring, and an attention to detail seldom seen in comparative yachts. The interior styling offers a clean, fresh feel with stunning detailing throughout the yacht. Heesen, along with Omega Architects have delivered in MON PLAISIR a yacht with the perfect balance of interior volume and exterior deck space, sleek, elegant lines with intelligent engineering, with comfort and efficiency a clear priority.

Supported by a highly experienced and charming crew, MON PLAISIR is the perfect yacht for 10 guests to cruise the Mediterranean.

Basic Information

Category: Motor Yacht

Model Year: 2008

Year Built: 2008

Country: France

Dimensions

LOA: 153' 3" (46.70m)

Beam: 27' 11" (8.50m)

Min Draft: 8' 3" (2.50m)

Speed, Capacities and Weight

Cruise Speed: 12 Kts. (14 MPH)

Max Speed: 16 Kts. (18 MPH)

Gross Tonnage: 499 Pounds

Water Capacity: 21133 Gallons

Fuel Capacity: 65013 Gallons

Accommodations

Total Cabins: 5

Sleeps: 10

Crew Cabin: 4

Crew Sleeps: 10

Hull and Deck Information

Hull Material: Steel

Exterior Designer: Heesen

Interior Designer: Omega

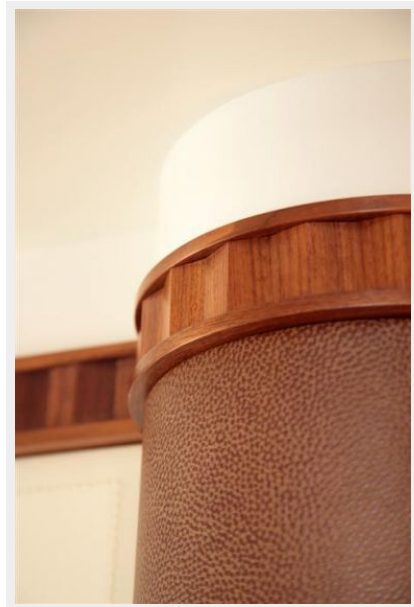
Engine Information

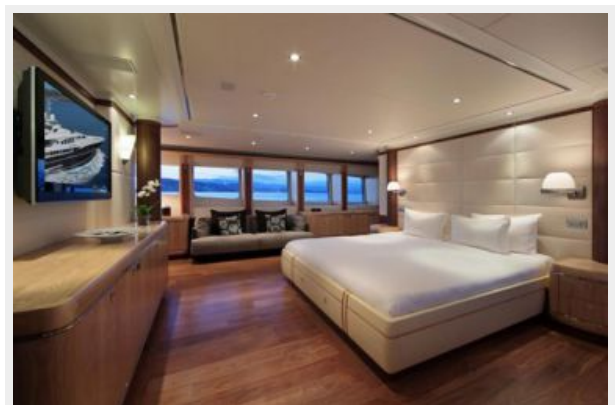
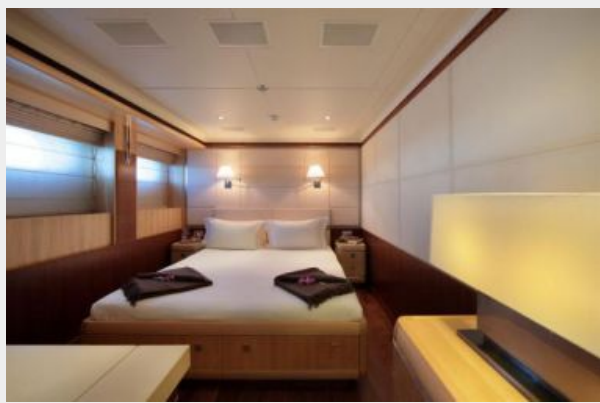
Engines: 2

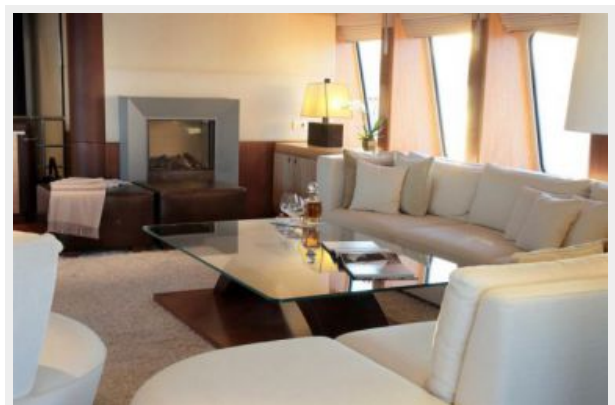
Manufacturer: MTU

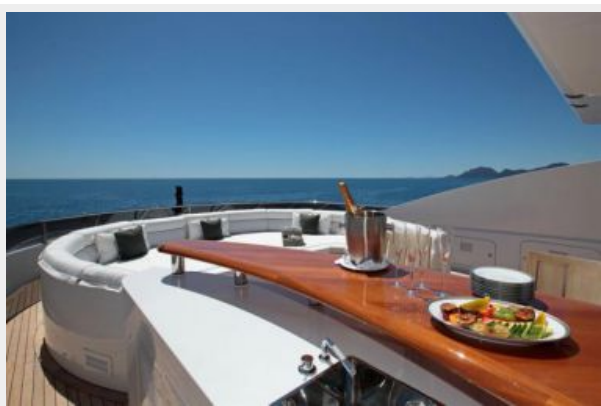
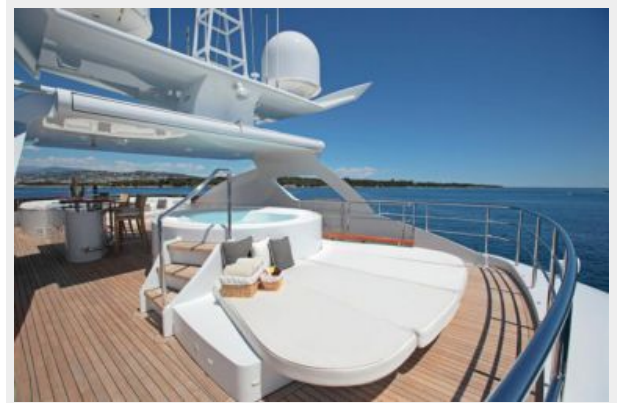
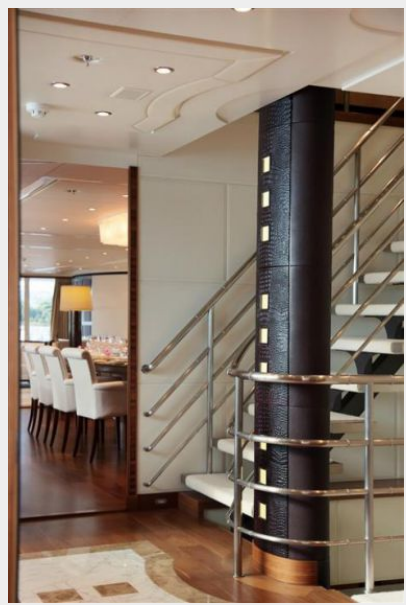
Fuel Type: Diesel

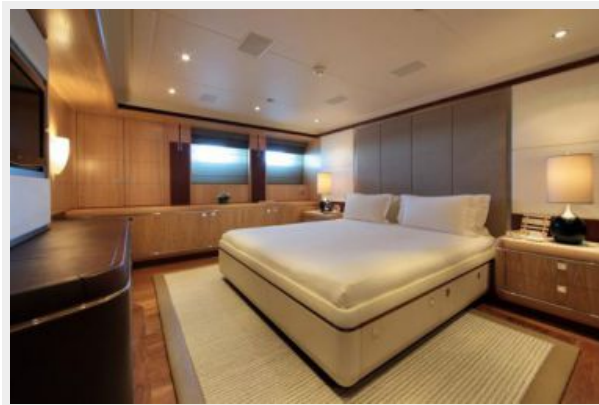
PHOTOS











CONTACTS

Andrey Shestakov, leading yacht broker of the sales department of Shestakov Yacht Sales Inc. Shestakov Yacht Sales Inc., the official representative of the Miami/Fort Lauderdale FL headquarters.

Contact details

Email: andrey@shestakovyachtsales.com

Web: shestakovyachtsales.com/en/

Telephones

USA: +1(954)274-4435

Office hours

Monday – Saturday: **9:00 - 21:00** EDT

Sunday: **closed**

Address



Harbour Towne Marina, 850 NE 3rd St,
STE 213, Dania, FL 33004