

MAYLEN — CERRI



Builder: CERRI

Year Built: 2014

Model: Motor Yacht

Price: PRICE ON APPLICATION

Location: United States

LOA: 86' 0" (26.21m)

Beam: 20' 10" (6.35m)

Max Draft: 4' 2" (1.27m)

Cruise Speed: 35 Kts. (40 MPH)

Max Speed: 40 Kts. (46 MPH)

Our experienced yacht broker, Andrey Shestakov, will help you choose and buy a yacht that best suits your needs **MAYLEN — CERRI** from our catalogue. Presently, at Shestakov Yacht Sales Inc., we have a wide variety of yachts available on our sale's list. We also work in close contact with all the big yacht manufacturers from all over the world.

If you would like to buy a yacht **MAYLEN — CERRI** or would like help answering any questions concerning purchasing, selling or chartering a yacht, please call **+1(954)274-4435**

TABLE OF CONTENTS

TABLE OF CONTENTS	2
SPECIFICATIONS	3
Overview	3
Basic Information	3
Dimensions	3
Speed, Capacities and Weight	4
Accommodations	4
Hull and Deck Information	4
Engine Information	4
PHOTOS	5
CONTACTS	10
Contact details	10
Telephones	10
Office hours	10
Address	10

SPECIFICATIONS

Overview

One of a kind brand new Sport Fly Cerri, custom built to highest standard of comfort and fully equipped with dual US/EUROPEAN specifications. Ideal for Bahamas trips due to its low draft. Powerful A/C units for tropical conditions. Water cooled converter and Water maker. Un barco realmente único en su género contando con un Sport Fly, realizado a medida para adaptarse a las altas exigencias técnicas y funcionales de su propietario. Completamente equipado según las especificaciones americanas y europeas. Por su reducida eslora, el barco puede navegar en aguas poco profundas, adaptándose a la navegación en las Bahamas. Potente aire acondicionado ideal para temperaturas tropicales. Desalinizador y refrigerador de agua.

Basic Information

Category: Motor Yacht

Sub Category: Flybridge

Model Year: 2015

Year Built: 2014

Country: United States

Registration #: 1254364

Coast Guard #: Miami Beach, FL

Fly Bridge: Yes

Cockpit: Yes

Dimensions

LOA: 86' 0" (26.21m)

Beam: 20' 10" (6.35m)

Max Draft: 4' 2" (1.27m)

MFG Length: 78' 8" (23.98m)

Speed, Capacities and Weight

Cruise Speed: 35 Kts. (40 MPH)

Cruise Speed Range: 420

Max Speed: 40 Kts. (46 MPH)

Displacement: 114640.37624 Pounds

Gross Tonnage: 124 Pounds

Water Capacity: 396.258078 Gallons

Fuel Capacity: 1849.204364 Gallons

Accommodations

Total Cabins: 4

Sleeps: 8

Captain Cabin: True

Crew Cabin: 2

Crew Berths: 2

Crew Sleeps: 3

Crew Heads: 2

Hull and Deck Information

Hull Material: Fiberglass

Deck Material: Fiberglass

Hull Configuration: Planing

Hull Color: Grey (two tone)

Hull Finish: Fiberglass

Hull Designer: CERRI

Exterior Designer: CERRI

Interior Designer: CERRI

Engine Information

Engines: 2

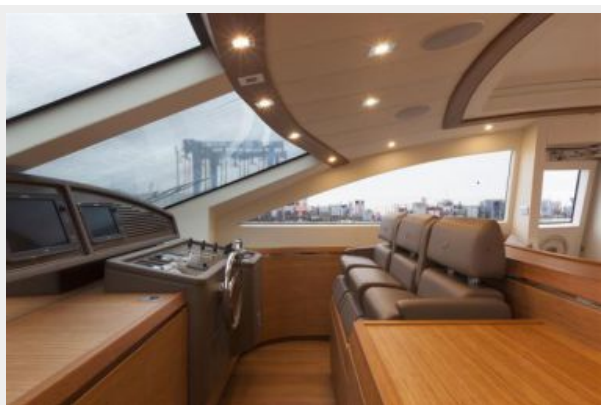
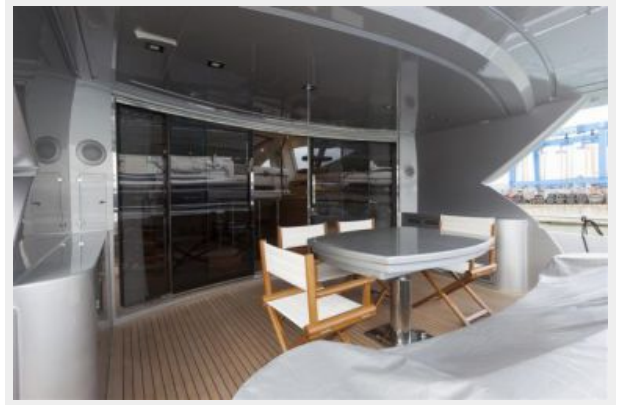
Manufacturer: MTU

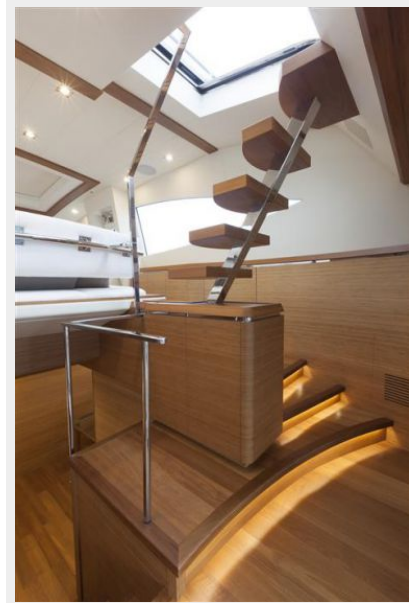
Model: 12VM94

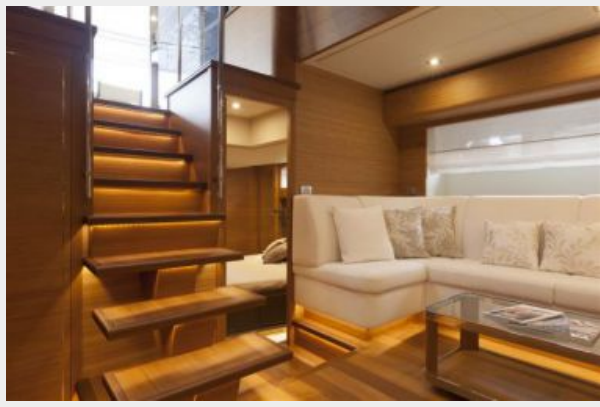
Engine Type: Inboard

Fuel Type: Diesel

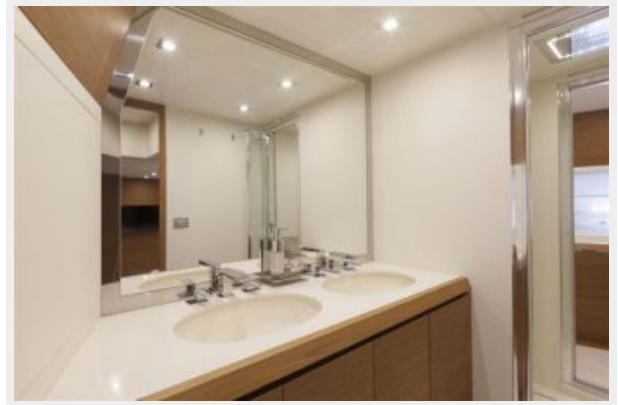
PHOTOS











CONTACTS

Andrey Shestakov, leading yacht broker of the sales department of Shestakov Yacht Sales Inc. Shestakov Yacht Sales Inc., the official representative of the Miami/Fort Lauderdale FL headquarters.

Contact details

Email: andrey@shestakovyachtsales.com

Web: shestakovyachtsales.com/en/

Telephones

USA: +1(954)274-4435

Office hours

Monday – Saturday: **9:00 - 21:00** EDT

Sunday: **closed**

Address



Harbour Towne Marina, 850 NE 3rd St,
STE 213, Dania, FL 33004