

## FLAMINGO DAZE — SEA FORCE IX



**Судостроитель:** SEA FORCE IX

**Год постройки:** 2010

**Модель:** Катер для спортивной рыбалки

**Цена:** **ЦЕНА ЯХТЫ ПО ЗАПРОСУ**

**Местонахождение:** United States

**Длина общая:** 92' 0" (28.04m)

**Ширина:** 22' 11" (6.98m)

**Макс. осадка:** 5' 5" (1.65m)

**Крейс. скорость:** 26 Kts. (30 MPH)

**Макс. скорость:** 36 Kts. (41 MPH)

Купить **FLAMINGO DAZE — SEA FORCE IX** а также выбрать подходящую вам яхту из нашего каталога яхт вам поможет опытный яхтенный брокер Андрей Шестаков. На сегодняшний день компания **Shestakov Yacht Sales Inc.** имеет большое количество яхт в собственном списке продаж, а также тесно сотрудничает со всеми крупными яхтенными производителями по всему миру.

Для того чтобы купить яхту **FLAMINGO DAZE — SEA FORCE IX** а также проконсультироваться по любому вопросу связанному с покупкой, продажей, чартером яхт позвоните по телефону **+7(918)465-66-44**.

# ОГЛАВЛЕНИЕ

ОГЛАВЛЕНИЕ	2
ХАРАКТЕРИСТИКИ	7
Обзор	7
Основная информация	7
Размеры	7
Скорость, вместимость и масса	7
Размещение	8
Корпус и палуба	8
Информация о двигателе	8
ПОДРОБНОЕ ОПИСАНИЕ	9
Walkthrough	9
Salon	9
Galley	9
Master Stateroom	10
Master Head	10
VIP Stateroom	11
VIP Head	11
Guest Stateroom	11
Guest Head	12
Crew Quarters	12
Bridge	13
Navigational Equipment/Electronics	14
Skybridge	14
Bow	15
Cockpit	15
Electrical	16
Mechanical/Engine Room	16
Исключения	18

Отказ от ответственности	18
ФОТОГРАФИИ	20
Salon	20
Salon	20
Spiral Staircase	20
Galley	20
Galley	21
Galley	21
Galley	21
Galley	21
Dinette	21
Galley	21
Dinette	22
Companionway	22
Master Stateroom	22
Master Stateroom	22
Master Head	22
Master Stateroom	22
Master Head	23
Master Head	23
Master Head	23
Master Head	23
VIP Stateroom	24
VIP Stateroom	24
VIP Head	24
VIP Stateroom	24
VIP Head	25
Guest Stateroom	25
Guest Head	25

---

Guest Stateroom	25
Guest Head	26
Guest Head	26
Guest Head	26
Crew Quarters	26
Crew Quarters	27
Crew Quarters	27
Crew Quarters	27
Crew Quarters	27
Crew Quarters	27
Crew Quarters	28
Crew Quarters	28
Crew Head	28
Crew Head	28
Crew Head	29
Enclosed Flybridge	29
Enclosed Flybridge	29
Enclosed Flybridge	29
Enclosed Flybridge	29
Enclosed Flybridge	29
Enclosed Flybridge	30
Navigation	30
Skybridge	30
Skybridge	30
Skybridge	30
Skybridge Seat	30
Skybridge	31
Skybridge Electronics	31
Skybridge Electronics	31
Skybridge Seating	31

---

---

Skybridge Seating	32
Skybridge Seating	32
Skybridge Seating	32
Cockpit	32
Cockpit	32
Cockpit	32
Cockpit	33
Cockpit	33
Cockpit	33
Cockpit	33
Cockpit	33
Cockpit	34
Engine Room	34
Engine Room	34
Engine Room	34
Engine Room	34
Engine Room	34
Engine Room	35
Engine Room	35
Engine Room	35
Engine Room	35
Engine Room	35
Engine Room	35
Engine Room	35
Engine Room	36
Engine Room	36
Engine Room	36
Tender	36
Tender	36
Tender	36
Passageway	37
Tender	37

---

---

Foredeck	37
Bow	37
Bow	38
Passageway	38
Bow Profile	38
Stern Profile	38
Diagram	39
<b>КОНТАКТЫ</b>	<b>40</b>
Контактная информация	40
Телефоны	40
Время работы	40
Адрес	40

# ХАРАКТЕРИСТИКИ

## Обзор

"FLAMINGO DAZE" is a boat of many passions. A fishing machine with a yacht interior, family cruising boat that chases billfish, a fast high-performance luxury motor yacht. This enclosed fly bridge vessel has three very large staterooms including a full beam master suite. The vessel also has a crew quarter that is accessed from the cockpit through the engine room. This vessel is powered with the MTU 16 V2000 M93 2400hp engines. "FLAMINGO DAZE" is truly turnkey and has always been maintained by a full time crew. No expense was spared in her construction!

## Основная информация

**Тип судна:** Катер для спортивной рыбалки

**Модельный год:** 2010

**Год постройки:** 2010

**Страна:** United States

**Верх:** Enclosed

**Открытая палуба мостика:** Да

## Размеры

**Длина общая:** 92' 0" (28.04m)

**Ширина:** 22' 11" (6.98m)

**Макс. осадка:** 5' 5" (1.65m)

## Скорость, вместимость и масса

**Крейс. скорость:** 26 Kts. (30 MPH)

**Макс. скорость:** 36 Kts. (41 MPH)

**Водоизмещение:** 138000 Pounds

**Вместимость воды:** 500 Gallons

**Объем топливного бака:** 4370 Gallons

## Размещение

---

Всего кают: 3

Всего ком. состава: 3

Каюты экипажа: 1

Комм. состав экипажа: 1

## Корпус и палуба

---

Материал корпуса: Fiberglass

## Информация о двигателе

---

Двигатели: 2

Производитель: MTU

Модель: 16V2000

Тип двигателя: Inboard

Тип топлива: Diesel



---

# ПОДРОБНОЕ ОПИСАНИЕ

---

## Walkthrough

---

The “FLAMINGO DAZE” boasts a World class cockpit, with a substantial lanai deck, full-beam master stateroom, crew quarters, and a brilliant ship-like engine room with plenty of work space and redundant systems. The interiors are comfortable and luxurious but also practical. The light and bright element is achieved largely by its overly large windows (8) and its light wood and fabric choices. This vessel has three very large staterooms with a crew stateroom with its own separate entrance through the engine room. The master is very large. Forward of the master to port is the VIP which features a true king size bed. This stateroom has its own private very well appointed ensuite head with large stall shower. The starboard stateroom has side by side berths, including an upper berth for a total of three. This stateroom also has its own very nice well-appointed ensuite head.

## Salon

---

As you enter this vessel through the electric salon door you have a very spacious salon with plenty of natural light. You have a very nice custom leather couch with storage to the port. The flooring is carpeting with runners. The appliances are all top of the line, and the refrigeration is all custom stainless steel under counter. There is a dining table to starboard that accommodates six people in their own chairs.

- Samsung 46" LCD TV with Apple TV with iPad and satellite receiver
- Speakers with subwoofer (surround sound system)
- iPod Docking Station w/remote and Blu-ray DVD
- Custom TV cabinet with DVD storage
- (2) Barrel chairs with (6) pillows
- Custom bottle and storage on both sides
- LED lighting with dimmers
- Window lambrequins and electric leather blinds
- Sub zero wine cooler
- Custom end table
- Custom coffee table with storage underneath

## Galley

---

The galley was designed for entertaining and the ability to be able to have a formal gathering of family and friends. The galley is appointed with the best of appliances and plenty of storage and refrigeration along with a big Dinette, U-shaped with seating for 6.

- Wolf 5 burner cook top with vent

- Wolf microwave
- Viking (large) oven
- Sub zero icemaker
- Miele dishwasher
- Kitchen Aid disposal
- Refrigerator/freezer combination unit. All custom stainless steel under counter
- Trend Stone countertops and Dinette
- C-bea stainless fridge & freezer (4)
- (12) Cabinet drawers and storage with pull outs
- Bamboo flooring

---

## Master Stateroom

---

The master stateroom is located just forward of the galley and takes full advantage of her almost 23' foot beam. This stateroom is very eloquently decorated and her ensuite head offers her owners all of the comforts of home.

- King size bed with custom leather head board, with storage and drawers
- Custom wood cabinets throughout with plenty of storage (16)
- Custom wrapped carpet with runner and custom cut hatches
- Samsung 40" LCD HDTV
- Direct TV with surround sound
- XM Radio
- Apple TV and iPad controls
- Camera system
- Homedock Deluxe Ipod Docking Station w/remote and headphones
- Desk with seating
- Hanging closets
- Custom designer comforter and (7) pillows
- Leather wall coverings
- Portholes for natural lighting
- Lights with dimmers
- Electric leather blinds both sides

---

## Master Head

---

- Private room toilet and bidet with (18) cabinets & drawers
- Dark bamboo floor with light wood on the walls with door
- His and hers sinks
- Kohler silver fixtures
- (9) Mirrored cabinets over counter
- (8) Drawers of cabinets under counter

- Custom Trend Stone stone countertops
- Full length linen closet
- Glass door into shower with bench seating
- (4) Cabinet storage in shower
- Kohler Rain overhead and shower fixtures
- (2) Wall sconces
- Wall safe
- Custom thermal acoustic insulation to prevent hull water noises. Whisper Wall overhead
- Lights and dimmers
- Bomar hatch for light

---

## VIP Stateroom

---

This stateroom features a true Queen size berth with plenty of storage. This stateroom is very eloquently appointed and has its own ensuite head with whisper wall.

- Queen size bed with storage - (3) large drawers
- Sony Bravia theater system
- 36" Samsung LCD TV
- Sony Blu-ray and crestron control with XM radio
- Satellite Receiver
- Electric leather blind
- Port hold port side for natural light
- DLO Homedock deluxe iPod docking station with remote
- Custom carpeting with wrapped hatches
- Large hanging closet
- Reading lights
- All lights on dimmers

---

## VIP Head

---

- Single sink with Kohler fixtures
- (4) Mirrored cabinets with storage
- (4) Lower cabinets (dark bamboo) w/ (2) drawers
- Bamboo flooring with light trim
- Custom Trend Stone countertop
- Head Hunter upgraded china bowl toilet
- Large stall shower
- Bomar hatch for light

---

## Guest Stateroom

---

This stateroom sleeps three very comfortable and also has its own ensuite head.

- Three custom berths with ensuite head and storage under (2)
- Samsung 36" LCD HDTV
- Blu-ray DVD and Crestron control
- (2) Reading lights
- (2) Cabinets with large hanging closet
- Custom carpet with hatch cutout
- Bomar hatch for natural lighting
- Cabinets for storage over Starboard bunk with recessed storage under bunk

## Guest Head

---

- Head Hunter head with upgraded China bowl toilet
- Kohler sink and silver fixtures
- Custom Trend Stone counter
- (2) Mirrored cabinets
- (2) Under sink with bamboo fronts
- Port hole on Starboard side
- Leather shade
- Stall shower with single door
- Dark bamboo flooring with light trim
- Lights with dimmers
- Access door from hallway for day head

## Crew Quarters

---

Starboard Side:

- (2) Berths
- (3) Cabinet storage areas
- (2) Drawers and one hanging closet
- TVs with DVD and satellite receivers
- Carpeting with runners
- Silver King fridge
- Silver King freezer
- Furuno alarm screen

Port Side:

- Captains Quarters
- (6) Cabinets
- Hanging closet with safe

- 36" Samsung LCD TV
- Blu-ray DVD and Satellite
- iPad with XM Radio
- Alarms/Monitors
- (2) Drawers
- Carpeting

Head:

- Shower
- Toilet
- Insta Hot water
- Rod storage

## Bridge

---

The enclosed fly bridge can be accessed from either the cockpit or from the salon with its custom stair well. This is a true command bridge with state of the art electronics, custom flooring and plenty of storage. Her eloquently appointed décor has lots of seating area to accommodate all of her guests. Including L-shaped seating with storage and table.

- Custom bamboo flooring
- Samsung 32" LCD TV
- Denon- AVR-2808 7.1 Surround Sound Receiver with 5 audio speakers and sub-woofer
- Blu-ray DVD with satellite receiver
- Universal Remote Control and Apple Ipad
- DLO Homedock Deluxe Ipod Docking Station w/remote
- Full function command helm station
- Two (2) MTU Engine Display Modules (EDM's)
- MTU engine controls with station active pad
- Back up controls are integral with IMDEC system
- Magnetic compass (5")
- Alarm panel display to accompany monitoring system
- Fuel level panel, start/stop and ignition key switches
- Anodized aluminum steering wheel (16")
- International air horns
- Bow & Stern thruster controls
- Electric levolor blinds with remote
- Crown Limited ultra-leather helm chair and (2) Stidd double helm seats
- Double Opacmare electric doors
- Sink with fold up faucet
- Carpeting with runner
- Black Trend Stone countertops and table
- Whisper Wall overhead liner

- Designer stairway to the salon
- L-shaped settee with storage and pedestal table
- Entertainment center
- Aft deck seating covered Sunbrella fabric and storage within.
- Ladder to Skybridge
- Three (3) commercial grade windshield wipers with washdown
- A stand-alone 12/24 V.D.C. system, located on the bridge, has independent 4D
- "Glass Mat" batteries and charger for emergency communication and electronics
- All lights and switches are on dimmers
- Aft helm on Deck with complete controls
- Aft Deck seating/storage
- Teaser reels
- (6) Rod holders

---

## Navigational Equipment/Electronics

---

- (3) Furuno NavNet 3D Processors
- (9) KEP Monitors
- Bridgeview monitor switching system
- VEI night vision camera
- Carlisle & Finch Spotlight
- Furuno satellite compass
- Furuno GPS Navigator backup
- ISIS vessel monitoring tank/alarm system
- Simrad AP50 Autopilot
- KEP Leviathan navigational computer
- Noble tech navigation software (backup)
- Weather works software
- (4) ICOM VHF radio
- (5) Cameras (2-engine room, mast, underwater, night vision)
- KVH HD-7 TV
- KVH V-Sat 7 communications
- Wave WIFI and Cell
- KVH 252 Mini broadband
- AIS tracking system
- Furuno DFF 1 & DFF 3 depth sounder
- Crestron 1080 HD Direct TV entertainment system with iPad interface

---

## Skybridge

---

- Double Stidd chair
- Large lounge seating with cushions and storage

- (4) Cockpit flood lights
- (3) KEP screens
- (2) Radar controls
- (2) MDEC gauges
- Bow and stern controls
- Auto pilot remote
- Molded in hardtop
- Red, white and blue lighting
- (2) VHF radios
- Mouse pad for computer
- Bridge view for (5)
- (4) Stereo speakers
- Forward outlet

---

## Bow

---

- Full stainless bow rail
- SWI 2200 hydraulic davit
- Teak bow pulpit
- Hydraulic windlass with remote pedals
- 200' Stainless chain
- Anchor locker - f/w outlet
- 2010 17' Nautica w/115 Yamaha
- 2008 Sea Doo Wave Runner RX7

---

## Cockpit

---

This vessel boasts one of the largest cockpits in her class. It is appointed with a lanai deck with a custom table with chairs. From the lanai deck you can access the cockpit from either the port or starboard stairs. As you walk down her stairs into the cockpit you will notice two storage areas on both the port and starboard. Once in the cockpit you will find plenty of custom refrigeration and engine access. Her teak deck has custom in deck fish boxes both to port and to starboard.

- Transom tuna door with custom polished 316 stainless steel hinge
- Two removable in-deck fish boxes with macerators
- Scuppered, self-bailing cockpit
- Four storage areas behind molded doors.
- Tackle storage drawers in one of the four leisure deck storage compartments
- Custom aluminum engine room entrance door/hatch
- Fresh water wash down
- Hydraulic 50' triple spreader Rupp riggers
- Custom dive tank storage with Bauer air compressor

- Custom hydraulic swim platform by Palm Beach Towers
- Cockpit shade cover
- (4) Cockpit lights
- Salt water wash down
- Traditional teak sole as well as covering boards
- Custom live bait well with window and lights
- (6) Underwater lights
- Custom ice box storage with Cob plate
- (4) Stereo speakers
- (3) Deck hatches to lazarette
- Custom table with seating
- (2) 75' 100 amp Shore cords
- (8) Rod holders in gunnels

---

## Electrical

---

- Two 75' 100a - 240VAC shore cords provide shore electricity to the ship.
- (2) 75' Extensions
- Each shore cord is on a powered cable hauler.
- The shore cords are protected with over current breakers, surge protection and galvanic isolators.
- Multiple tap isolation transformers isolate the ship from the shore
- A split bus 240 VAC power distribution panel selects the power source, monitors and distributes the power to the sub-panels
- Custom made zone AC sub-panels
- (2) Northern Light start/stop gauge panel
- 100 amp Shore protector

---

## Mechanical/Engine Room

---

- Twin DDC-MTU 16V2000 M93 2400 BHP @ 2450 with chrome package
- 24 V.D.C. starting and electrics
- Urethane paint
- Power steering pump, filter and heat exchanger on each engine
- Hydraulic system pump mounted on each gear box
- ZF marine reduction transmission
- MTU Vibration mounts
- Twin Northern Lights 55Kw 120/240 V.A.C. marine diesel generators(2800 hours-9/15/2014)
- Fresh water cooling system with remote control panel
- Propulsion Shaft Line: Aqualoy 22 High Strength propeller shafts turned and trued.
- Thick walled filament wound fiberglass shaft log (tube) with Thordon high performance



shaft bearing in the aft end with the forward end machined for the shaft seal hose. The tube is laser aligned and structurally glassed to the hull with multiple layers of glass and epoxy resin inside and out.

- Drip-less shaft seals secured to the shaft logs
- New batteries 2013
- Clarion Watertight CD/Tuner/Multimedia Ctrl.
- Clarion CeNet iPod Interface for DFZ675MC
- PolyPianar 5x7 Box Marine Speakers
- Multiple aluminum fuel tanks having a total capacity of approximately 4,370 gallons
- Each fuel tank has two fuel fills, dual vents, two level monitoring points and full port ball valves on all pick-up tubes. Engine room tanks have sight tubes.
- The fuel management panel has the valving for the fuel transfer system, engine fuel supply selection and generator fuel supply and return selection.
- Each propulsion engine can draw fuel from the four primary engine supply tanks via a four-way selector valve on the fuel management panel.
- Each propulsion engine has a dual element fuel filter.
- Each propulsion engine has an independent fuel-priming pump.
- Each generator engine draws fuel from the center cockpit fuel tank.
- Each generator engine has a single element fuel filter.
- Each generator engine has an independent fuel-priming pump.
- The “from any tank to any tank” fuel transfer system is controlled by the supply and return valve manifolds on the fuel management panel. Fuel movement is by a bronze gear pump activated at the fuel management panel.
- Access to cockpit
- Backup Head Hunter fuel alarms & monitoring
- 50 Gallon use in new oil tank
- (2) ARG Mitsubishi MSM 4000 Gyros
- Next to the fuel management panel are the fuel transfer supply and return “quick disconnect” fittings activated by ports on the supply and return valve manifolds on the fuel management panel.
- A fuel polishing unit parallels the primary fuel transfer pump to clean fuel from any tank to any tank and serve as a back-up to the fuel transfer pump.
- All fuel supply, return and transfer hose is USCG approved with brass fittings.
- All tanks have a level sender with monitors near the fuel management panel and on the primary helm station
- The FM-200 fire suppression system for the engine room is fully engineered by the manufacturer.
- One aluminum water tank with a capacity of 500 gallons
- Each water tank has a water fill, dual vents, two level monitoring points and full port ball valves on all pick-up tubes.
- Headhunter primary fresh water pressure pump supplies a filtered and non-filtered split delivery manifold system. Pump is isolated with valves
- Tidal Wave sewage treatment system
- Sea Recovery 2 A 1,400 GPD watermaker discharges into the fresh water tanks

- Filtered “potable” fresh water delivery system with accumulator tank supplies water for consumption. From the central PVC trunk line, valve isolated branch lines to each end user device are color-coded poly tubing.
- Non-filtered fresh water delivery system with accumulator tank supplies water for the toilet system.
- Two 20-gallon water heaters are zoned for quick response. Each water heater has independent valving and check valves for isolation.
- Dock-side water inlet
- The hydraulic system for the bow thruster and anchor windlass is fully engineered by the equipment manufacturer.
- Hydraulic power pumps are mounted on both ZF engine transmission “C” pads for reliable power. The pumps are sized to give 100% rated power to the thrusters and windlass with both engines at idle and 80% power with one pump operating.
- Reverse cycle chilled water air conditioning with (4) staged compressors
- Each living area to have one breathe easy UV sterilizing unit.
- The engine oil sumps, transmission oil sumps and generator oil sumps are fitted with quick disconnects.
- Oil movement is by a portable pump with hoses and quick disconnects.
- Livos engine room fans
- Cruisair A/C
- Start/Stop
- MDEC read-outs
- ISIS System to alert Captain by phone and or email
- (5) Freezer controls with alarms
- (2) Separate fuel water separators
- (2) Cameras
- (3) Charles battery chargers - 2014
- Compressed air System
- The air compressor is oil-less type with storage tank
- Phone/Intercom system
- Polished stainless panels on ceiling and sides on fuel tanks
- Painted engines of stringers - white
- Bauer dive compressor

---

## Исключения

При продаже яхты исключаются личные вещи владельца.

---

## Отказ от ответственности

Компания предоставляет описание судна или яхты добросовестно, но не может гарантировать точность этой информации, а также не ручается за техническое состояние. Покупатель должен проинструктировать своих агентов или оценщиков

исследовать представленную информацию более подробно, по собственному желанию. Продажа судна или яхты, изменение цены или снятие с продажи будет происходить без предварительного уведомления.

# ФОТОГРАФИИ

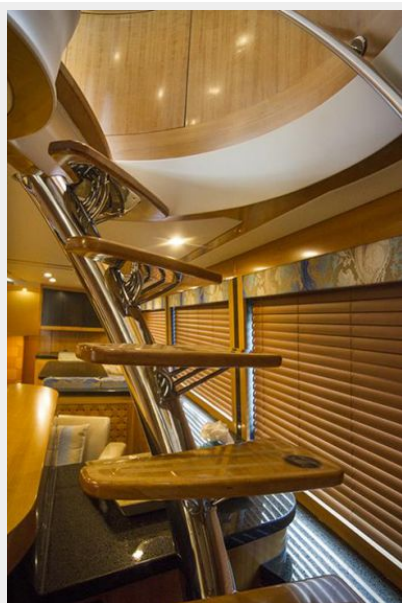
Salon



Salon



Spiral Staircase



Galley



**Galley**



**Galley**



**Galley**



**Galley**



**Galley**



**Dinette**





**Dinette**



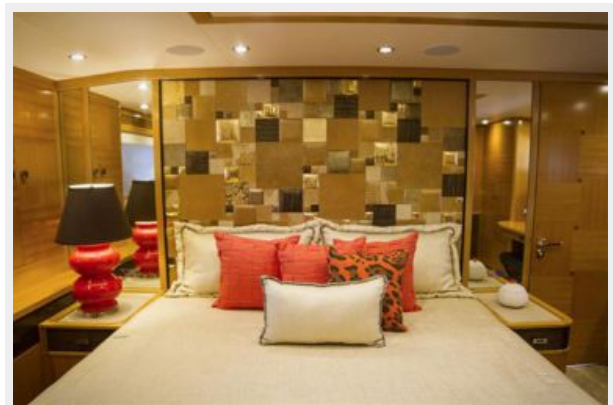
**Companionway**



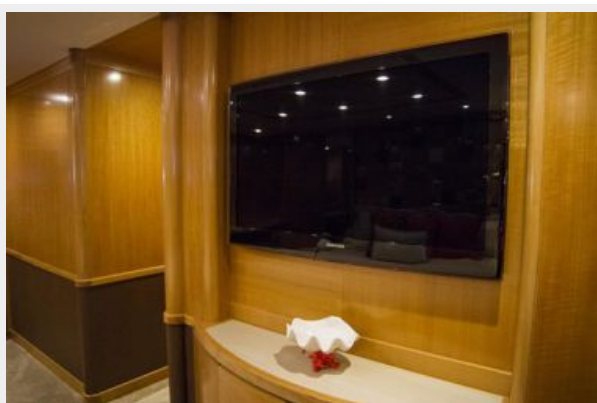
**Master Stateroom**



**Master Stateroom**



**Master Stateroom**



**Master Head**



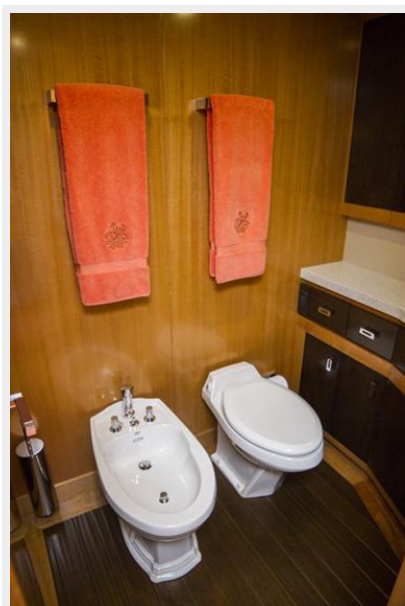
**Master Head**



**Master Head**



**Master Head**



**Master Head**



**VIP Stateroom**



**VIP Stateroom**



**VIP Stateroom**



**VIP Head**





**VIP Head**



**Guest Stateroom**



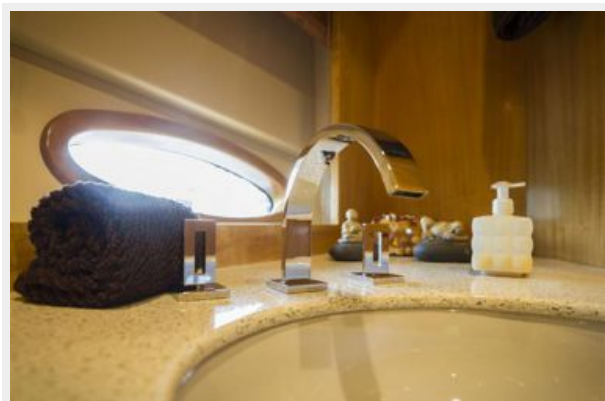
**Guest Head**



**Guest Stateroom**



**Guest Head**



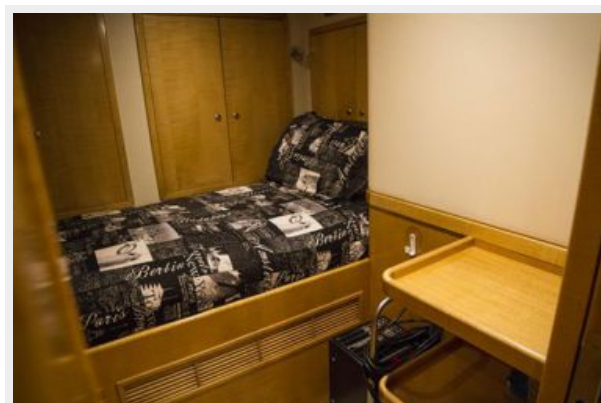
**Guest Head**



**Guest Head**



**Crew Quarters**



**Crew Quarters**



**Crew Quarters**



**Crew Quarters**

**Crew Quarters**





**Crew Quarters**



**Crew Quarters**



**Crew Head**



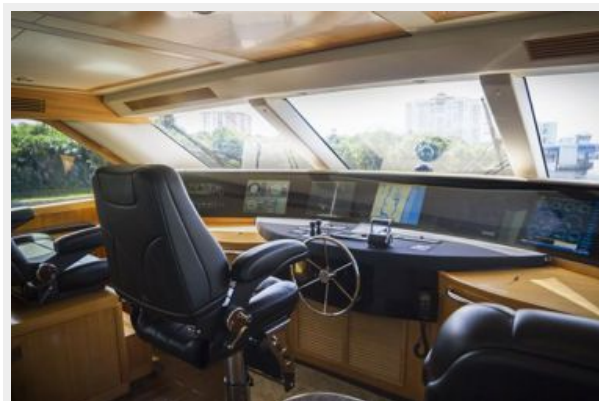
**Crew Head**



**Crew Head**



**Enclosed Flybridge**



**Enclosed Flybridge**



**Enclosed Flybridge**



**Enclosed Flybridge**



**Enclosed Flybridge**





**Enclosed Flybridge**



**Navigation**



**Skybridge**



**Skybridge**



**Skybridge**



**Skybridge Seat**



### Skybridge



### Skybridge Electronics



### Skybridge Electronics



### Skybridge Seating





**Skybridge Seating**



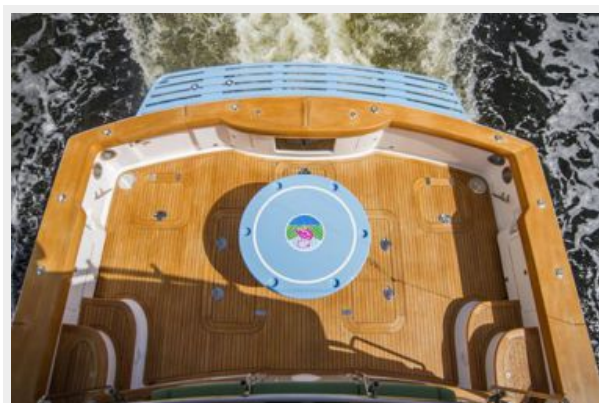
**Skybridge Seating**



**Skybridge Seating**



**Cockpit**



**Cockpit**



**Cockpit**





**С cockpit**



**С cockpit**



**С cockpit**



**С cockpit**



Cockpit



Engine Room



Engine Room



Engine Room



Engine Room



Engine Room





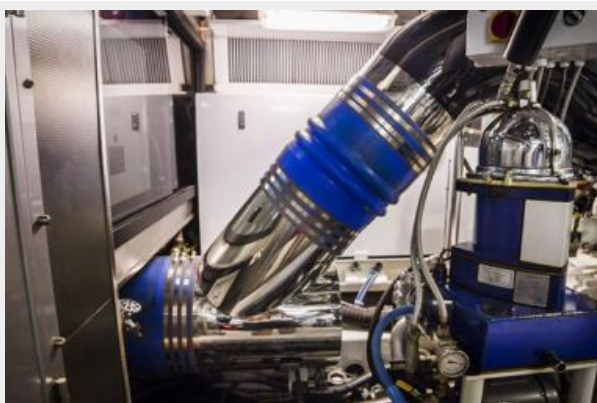
**Engine Room**



**Engine Room**



**Engine Room**



**Engine Room**



**Engine Room**



**Engine Room**



**Engine Room**



**Engine Room**



**Tender**



**Tender**



**Tender**





**Tender**



**Passageway**



**Foredeck**



**Bow**



**Bow**



**Passageway**



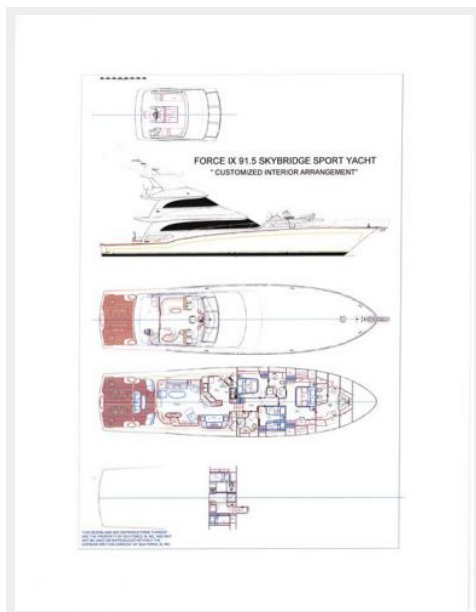
**Bow Profile**



**Stern Profile**



## Diagram



# КОНТАКТЫ

Андрей Шестаков (Andrey Shestakov) – ведущий яхтенный брокер отдела продаж яхт и судов компании Shestakov Yacht Sales Inc. Официальный представитель Shestakov Yacht Sales Inc. для русскоговорящих клиентов в центральном офисе компании в Майами/Форт Лодердейл/Флорида/США.

## Контактная информация

Email: [andrey@shestakovyachtsales.com](mailto:andrey@shestakovyachtsales.com)

Web: [shestakovyachtsales.com](http://shestakovyachtsales.com)

## Телефоны

Краснодарский край: **+7(918)465-66-44**

США, Майами, Флорида: **+1(954)274-4435**

## Время работы

Понедельник – Суббота: **9:00 - 21:00**  
EDT

Воскресенье: **Закрето**

## Адрес



Harbour Towne Marina, 850 NE 3rd St,  
STE 213, Dania, FL 33004