

BLAZER — NAUTOR'S SWAN



Builder: NAUTOR'S SWAN

LOA: 42' 0" (12.80m)

Year Built: 2008

Beam: 12' 1" (3.68m)

Model: Cruising/Racing Sailboat

Price: PRICE ON APPLICATION

Location: United States

Our experienced yacht broker, Andrey Shestakov, will help you choose and buy a yacht that best suits your needs **Blazer — NAUTOR'S SWAN** from our catalogue. Presently, at Shestakov Yacht Sales Inc., we have a wide variety of yachts available on our sale's list. We also work in close contact with all the big yacht manufacturers from all over the world.

If you would like to buy a yacht **Blazer — NAUTOR'S SWAN** or would like help answering any questions concerning purchasing, selling or chartering a yacht, please call **+1(954)274-4435**

TABLE OF CONTENTS

TABLE OF CONTENTS	2
SPECIFICATIONS	4
Overview	4
Basic Information	4
Dimensions	4
Speed, Capacities and Weight	4
Accommodations	4
Hull and Deck Information	5
Engine Information	5
DETAILED INFORMATION	6
Hull and Deck	6
Interior	6
Deck Hardware	6
Main Cabin	7
Electronics and Navigation Equipment	7
Galley	7
Fore Cabin	8
Head	8
Construction	8
Plumbing and Ventilation	8
Electrical	9
Rig	9
Hatches and Windows	10
Misc.	10
Spars, Sails and Rigging	10
Exclusions	10
Disclaimer	10
PHOTOS	12

CONTACTS	15
Contact details	15
Telephones	15
Office hours	15
Address	15

SPECIFICATIONS

Overview

BLAZER is a PROVEN WINNER having recently won the American Fall Series in Western Long Island Sound....Again! The boat continues to dominate the very competitive NYYC 42 class. This class was commissioned by the New York Yacht Club, with a long history of one design classes dating back to the New York 30 Class in 1905. The NYYC 42 was designed to race both inshore and off, while providing a comfortable fast cruising platform for the family. These boats are well respected and sought after in the American, European and Asian Markets. If you are in the market for a racer/cruiser sailboat with world class credentials, BLAZER is certainly that boat.

Basic Information

Category: Cruising/Racing Sailboat

Model Year: 2008

Year Built: 2008

Country: United States

Dimensions

LOA: 42' 0" (12.80m)

LWL: 37' 0" (11.28m)

Beam: 12' 1" (3.68m)

Speed, Capacities and Weight

Displacement: 15983 Pounds

Water Capacity: 84 Gallons

Holding Tank: 14 Gallons

Fuel Capacity: 37 Gallons

Accommodations

Total Cabins: 3

Total Berths: 10

Sleeps: 10

Total Heads: 1

Hull and Deck Information

Hull Material: Fiberglass

Deck Material: Fiberglass Sandwich

Hull Configuration: Fin & Bulb

Hull Color: White

Hull Finish: Plastic

Hull Designer: German Frers

Engine Information

Engines: 1

Manufacturer: Volvo Penta

Model: D2@-40 130 S

Fuel Type: Diesel

DETAILED INFORMATION

Hull and Deck

- White Gelcoat with blue cove stripe and boot stripe
- Bottom epoxy barrier coated
- Baltoplate antifouling paint sprayed application and wet sanded to racing finish
- Infusion molded E-glass laminate with carbon fiber reinforcements in specified areas
- Closed cell foam cored hull with high density foam in specified areas
- Water tight bulkhead at bow
- Faired Steel keel with lead bulb
- GRP Rudder with Carbon stock
- Infusion molded E-glass/vinylester laminate sandwich with glass skins and closed cell foam core.
- White gelcoat with molded in light grey non-skid
- Halyards and reef lines are lead below deck to the cockpit
- Stowage for gas bottle in port side coaming
- Teak deck on cockpit seats

Interior

The interior is white with teak accents. The interior structure is built around a GRP inner lining incorporating the bunk fronts, navigation station, as well as the galley cabinetry. The main salon consists of a settee on the port and starboard side with a drop leaf table in the middle aft of the mast. Located inside the table is the custom mast jack installation. The Navigation station is located to Starboard at the bottom of the companionway. Directly across on the Port side is the Galley.

- Galley and navigation station are teak
- Plywood floorboards covered with bamboo veneer which is varnished and has non-skid
- Overhead liner GRP
- Foam mattresses over Scandi-Flex battens
- Handrails throughout
- Leecloths for lower saloon and aft cabin berths
- Dark blue fabric on interior cushions
- Racing covers for saloon sofa settees and backrest cushions and saloon table

Deck Hardware

- Harken B530TCR aluminum alloy 3 speed/top cleat racing winches

- Harken B53.2STA Mainsheet winches
- Harken B44.2STA Halyard winches
- Harken jib sheet tracks with lead adjuster system
- Harken main sheet traveler
- Harken halyard lead blocks
- Spinlock clutches
- Twin steering wheels w/compass on pedestals
- Emergency tiller
- Crossover block for halyards on both sides
- Stainless steel pushpit, pulpit and stanchions
- 600mm high life lines, with lower life lines at minimum ORC height
- Custom steering platform for helmsman while boat is heeled
- Custom hiking padding on lower life lines
- Grab rails each side of coach roof and companionway
- Sheet bags in cockpit
- Code Zero fitting at bow

Main Cabin

- Folding leaf table in teak which hold the mast jack inside (custom installed)
- Settee backrests lift up and convert into Pullman berths
- Water & fuel tanks below settees

Electronics and Navigation Equipment

- Suunto magnetic compass located at each steering pedestal
- Furuno GPS
- Icom VHF
- Ockam 007 sailing Instruments (2) displays in cockpit (5) Jumbo displays on mast (1) display in nav station
- Sony AM/FM Stereo with XM Radio
- 4 poly planer speakers
- Simrad Autopilot
- Dell Navigation computer running Expedition at Nav Station
- Icom VHF

Galley

The Galley is located to port at the bottom of the companionway. It is an L shaped galley with a double sink. There is ample storage above the stove as well as above the refrigerator for dishes and dry goods.

- Gimballed stainless steel two burner stove with oven.
- Stainless steel double sinks with fresh water tap
- Large top loading refrigerator
- Garbage bin

Fore Cabin

- Folding leaf table in teak which hold the mast jack inside (custom installed)
- Settee backrests lift up and convert into Pullman berths
- Water & fuel tanks below settees

Head

- White GRP interior module with washbasin
- Mirrored locker outboard
- Fresh water tap, shower

Construction

- White gelcoat with blue cove and boot stripes.
- Epoxy coated bottom barrier
- Baltoplate antifouling paint sprayed on bottom and race finish wetsanded.
- Infusion molded E-glass/vinylester laminate with carbon reinforcements in selected areas.
- Closed cell foam cored hull, with higher density foam in bottom and slamming areas.
- Water tight bulkhead at bow
- Bottom stiffeners reinforced with unidirectional carbon and multi-axial glassfibre
- GRP engine beds.
- Stainless Steel chainplates
- Faired steel T-Keel with lead bulb
- GRP Rudder w/carbon stock

Plumbing and Ventilation

- Flush closing composite sea cocks for all through hull fittings below water line.
- Jabsco Marine toilet w/Sea water for toilet flushing.
- Y-valve in head for overboard discharge or holding tank selection
- Holding tank emptied by hand pump or deck suction.
- Fresh water 84 gal in polyethylene tanks.
- Pressurized hot and cold water
- Fresh water foot pump in galley

- Oras single lever faucets
- Holding tank 14.5 gal
- Two manual and on electric bilge pump
- Tank level indicators
- Battery driven refrigeration unit
- Engine space ventilation air inlet from deck
- Remote control fire extinguisher in engine space
- Sea water foot pump in galley

Electrical

- Shore Power 110V AC System
- 30 Amp shore power cord and inlet
- 110V outlet at chart table
- Mastervolt 110 inverter/battery charger
- 12V DC and 100V AC breaker panel located outboard of chart table
- 12V outlet at chart table
- Service battery AGM type 12V
- Starting battery 12V
- Electrical system and standing rigging grounded through the keel
- Lighting: Red/Green LED navigation lights on bow pulpit, White LED stern light on aft pulpit, Recessed halogen dome lights in main salon, Flexible chart light at Chart table, Red light above galley and chart table

Rig

- Hall spars fractional rigged clear-coated carbon fiber double spreader mast.
- Black painted aluminum boom and aluminum spreaders.
- Windex with light
- Reckman RS 3000-S2 Carbon headsail furler recessed under deck - not fully functioning and not installed at this time
- German style, continuous main sheet
- 2 spinnaker halyards at masthead and hounds
- Navtec rod rigging with discontinuous shrouds, Series 500 turnbuckles.
- Combined mainsail luff groove and track/car system
- Hall Quick vang
- Carbon retractable bowsprit in waterproof garage
- Holmatro backstay adjuster with 2 panels
- Harken Carbo foil headstay system
- Lazy Jacks

Hatches and Windows

- Lewmar foredeck hatch
- Lewmar saloon overhead hatch
- Lewmar ventilation hatch in head
- 4 fixed coaming windows
- 2 openable portholes-in aft, galley and navigation area.
- 2 openable portholes in cockpit for aft cabins
- 1 hatch to gas bottle locker (for 1 gas bottles)
- 1 hatch to lazarette

Misc.

- OD certification from builder
- IRC One design measurement certificate

Spars, Sails and Rigging

- Hall Spars fractional rigged clear coated carbon fiber double spreader mast with aluminum spreaders
- Aluminum boom painted black
- Windex with light
- Reckman RS 3000-S2 Carbon headsail furler
- German Style continuous mainsheet
- Navtec rod rigging
- Hall quick vang
- Carbon retractable bowsprit
- Hydraulic backstay adjuster
- Harken carbon foil headstay
- North Sails built in 2013 or prior include: 3DL Main, Light Jib, Med Jib, Heavy Jib, #4 Jib. Dacron Main. 1A spin, 2A spin, 4A spin,
- Newer sails available for purchase separately

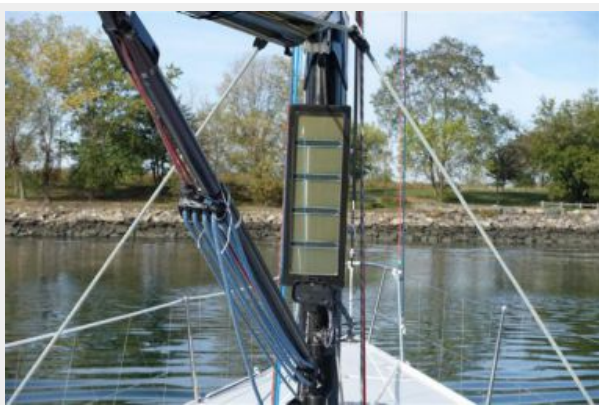
Exclusions

Owner's personal belongings.

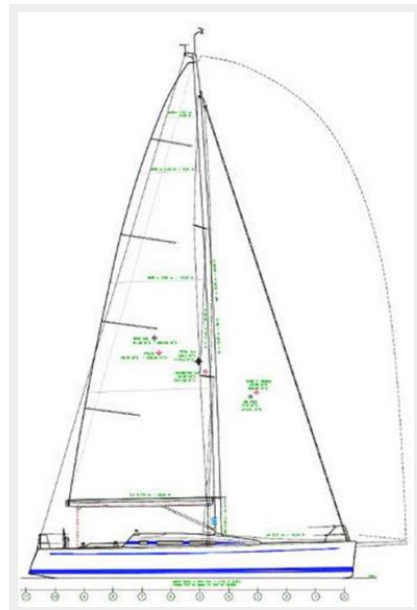
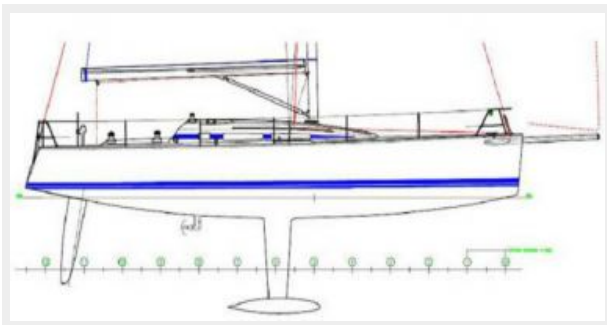
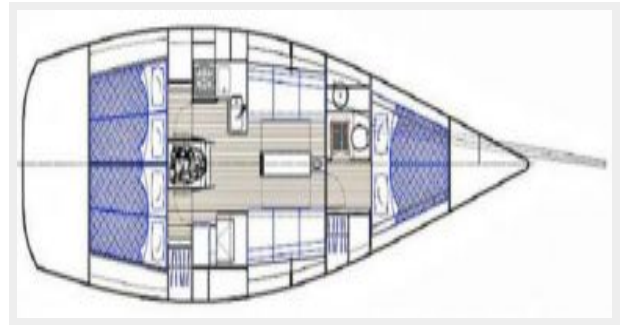
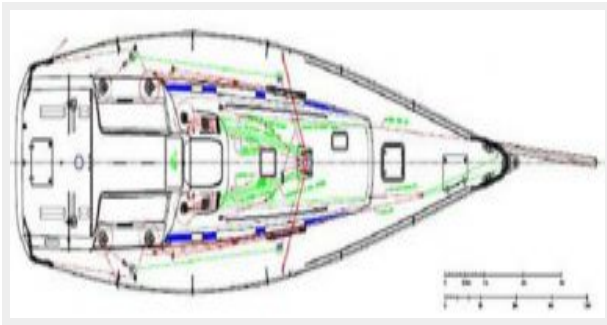
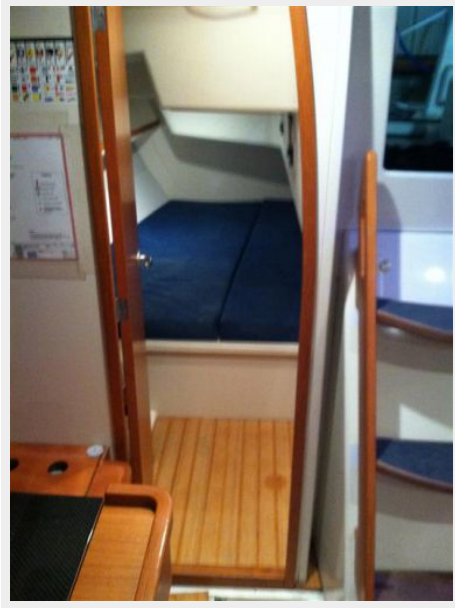
Disclaimer

The Company offers the details of this vessel or yacht in good faith but cannot guarantee or warrant the accuracy of this information nor warrant the condition of the vessel. A buyer should instruct his representatives, agents, or his surveyors, to investigate such details as the buyer desires validated. This vessel or yacht is offered subject to prior sale, price change, or withdrawal without notice.

PHOTOS







CONTACTS

Andrey Shestakov, leading yacht broker of the sales department of Shestakov Yacht Sales Inc. Shestakov Yacht Sales Inc., the official representative of the Miami/Fort Lauderdale FL headquarters.

Contact details

Email: andrey@shestakovyachtsales.com

Web: shestakovyachtsales.com/en/

Telephones

USA: +1(954)274-4435

Office hours

Monday – Saturday: **9:00 - 21:00** EDT

Sunday: **closed**

Address



Harbour Towne Marina, 850 NE 3rd St,
STE 213, Dania, FL 33004