

BLAZER — NAUTOR'S SWAN



Судостроитель: NAUTOR'S SWAN

Год постройки: 2008

Модель: Cruising/Racing Sailboat

Цена: ЦЕНА ЯХТЫ ПО ЗАПРОСУ

Местонахождение: United States

Длина общая: 42' 0" (12.80m)

Ширина: 12' 1" (3.68m)

Купить **Blazer — NAUTOR'S SWAN** а также выбрать подходящую вам яхту из нашего каталога яхт вам поможет опытный яхтенный брокер Андрей Шестаков. На сегодняшний день компания **Shestakov Yacht Sales Inc.** имеет большое количество яхт в собственном списке продаж, а также тесно сотрудничает со всеми крупными яхтенными производителями по всему миру.

Для того чтобы купить яхту **Blazer — NAUTOR'S SWAN** а также проконсультироваться по любому вопросу связанному с покупкой, продажей, чартером яхт позвоните по телефону **+7(918)465-66-44**.

ОГЛАВЛЕНИЕ

ОГЛАВЛЕНИЕ	2
ХАРАКТЕРИСТИКИ	4
Обзор	4
Основная информация	4
Размеры	4
Скорость, вместимость и масса	4
Размещение	4
Корпус и палуба	5
Информация о двигателе	5
ПОДРОБНОЕ ОПИСАНИЕ	6
Hull and Deck	6
Interior	6
Deck Hardware	6
Main Cabin	7
Electronics and Navigation Equipment	7
Galley	7
Fore Cabin	8
Head	8
Construction	8
Plumbing and Ventilation	8
Electrical	9
Rig	9
Hatches and Windows	10
Misc.	10
Spars, Sails and Rigging	10
Исключения	10
Отказ от ответственности	10
ФОТОГРАФИИ	12

КОНТАКТЫ	15
Контактная информация	15
Телефоны	15
Время работы	15
Адрес	15

ХАРАКТЕРИСТИКИ

Обзор

BLAZER is a PROVEN WINNER having recently won the American Fall Series in Western Long Island Sound....Again! The boat continues to dominate the very competitive NYYC 42 class. This class was commissioned by the New York Yacht Club, with a long history of one design classes dating back to the New York 30 Class in 1905. The NYYC 42 was designed to race both inshore and off, while providing a comfortable fast cruising platform for the family. These boats are well respected and sought after in the American, European and Asian Markets. If you are in the market for a racer/cruiser sailboat with world class credentials, BLAZER is certainly that boat.

Основная информация

Тип судна: Cruising/Racing Sailboat	Модельный год: 2008
Год постройки: 2008	Страна: United States

Размеры

Длина общая: 42' 0" (12.80m)	Длина по ватерлинии: 37' 0" (11.28m)
Ширина: 12' 1" (3.68m)	

Скорость, вместимость и масса

Водоизмещение: 15983 Pounds	Вместимость воды: 84 Gallons
Вместимость сточного бака: 14 Gallons	Объем топливного бака: 37 Gallons

Размещение

Всего кают: 3	Всего коек: 10
Спальные места: 10	Всего ком. состава: 1

Корпус и палуба

Материал корпуса: Fiberglass

Материал палубы: Fiberglass Sandwich

Комплектация корпуса: Fin & Bulb

Цвет корпуса: White

Отделка корпуса: Plastic

Дизайнер корпуса: German Frers

Информация о двигателе

Двигатели: 1

Производитель: Volvo Penta

Модель: D2@-40 130 S

Тип топлива: Diesel

ПОДРОБНОЕ ОПИСАНИЕ

Hull and Deck

- White Gelcoat with blue cove stripe and boot stripe
- Bottom epoxy barrier coated
- Baltoplate antifouling paint sprayed application and wet sanded to racing finish
- Infusion molded E-glass laminate with carbon fiber reinforcements in specified areas
- Closed cell foam cored hull with high density foam in specified areas
- Water tight bulkhead at bow
- Faired Steel keel with lead bulb
- GRP Rudder with Carbon stock
- Infusion molded E-glass/vinylester laminate sandwich with glass skins and closed cell foam core.
- White gelcoat with molded in light grey non-skid
- Halyards and reef lines are lead below deck to the cockpit
- Stowage for gas bottle in port side coaming
- Teak deck on cockpit seats

Interior

The interior is white with teak accents. The interior structure is built around a GRP inner lining incorporating the bunk fronts, navigation station, as well as the galley cabinetry. The main salon consists of a settee on the port and starboard side with a drop leaf table in the middle aft of the mast. Located inside the table is the custom mast jack installation. The Navigation station is located to Starboard at the bottom of the companionway. Directly across on the Port side is the Galley.

- Galley and navigation station are teak
- Plywood floorboards covered with bamboo veneer which is varnished and has non-skid
- Overhead liner GRP
- Foam mattresses over Scandi-Flex battens
- Handrails throughout
- Leecloths for lower saloon and aft cabin berths
- Dark blue fabric on interior cushions
- Racing covers for saloon sofa settees and backrest cushions and saloon table

Deck Hardware

- Harken B530TCR aluminum alloy 3 speed/top cleat racing winches

- Harken B53.2STA Mainsheet winches
- Harken B44.2STA Halyard winches
- Harken jib sheet tracks with lead adjuster system
- Harken main sheet traveler
- Harken halyard lead blocks
- Spinlock clutches
- Twin steering wheels w/compass on pedestals
- Emergency tiller
- Crossover block for halyards on both sides
- Stainless steel pushpit, pulpit and stanchions
- 600mm high life lines, with lower life lines at minimum ORC height
- Custom steering platform for helmsman while boat is heeled
- Custom hiking padding on lower life lines
- Grab rails each side of coach roof and companionway
- Sheet bags in cockpit
- Code Zero fitting at bow

Main Cabin

- Folding leaf table in teak which hold the mast jack inside (custom installed)
- Settee backrests lift up and convert into Pullman berths
- Water & fuel tanks below settees

Electronics and Navigation Equipment

- Suunto magnetic compass located at each steering pedestal
- Furuno GPS
- Icom VHF
- Ockam 007 sailing Instruments (2) displays in cockpit (5) Jumbo displays on mast (1) display in nav station
- Sony AM/FM Stereo with XM Radio
- 4 poly planer speakers
- Simrad Autopilot
- Dell Navigation computer running Expedition at Nav Station
- Icom VHF

Galley

The Galley is located to port at the bottom of the companionway. It is an L shaped galley with a double sink. There is ample storage above the stove as well as above the refrigerator for dishes and dry goods.

- Gimballed stainless steel two burner stove with oven.
- Stainless steel double sinks with fresh water tap
- Large top loading refrigerator
- Garbage bin

Fore Cabin

- Folding leaf table in teak which hold the mast jack inside (custom installed)
- Settee backrests lift up and convert into Pullman berths
- Water & fuel tanks below settees

Head

- White GRP interior module with washbasin
- Mirrored locker outboard
- Fresh water tap, shower

Construction

- White gelcoat with blue cove and boot stripes.
- Epoxy coated bottom barrier
- Baltoplate antifouling paint sprayed on bottom and race finish wetsanded.
- Infusion molded E-glass/vinylester laminate with carbon reinforcements in selected areas.
- Closed cell foam cored hull, with higher density foam in bottom and slamming areas.
- Water tight bulkhead at bow
- Bottom stiffeners reinforced with unidirectional carbon and multi-axial glassfibre
- GRP engine beds.
- Stainless Steel chainplates
- Faired steel T-Keel with lead bulb
- GRP Rudder w/carbon stock

Plumbing and Ventilation

- Flush closing composite sea cocks for all through hull fittings below water line.
- Jabsco Marine toilet w/Sea water for toilet flushing.
- Y-valve in head for overboard discharge or holding tank selection
- Holding tank emptied by hand pump or deck suction.
- Fresh water 84 gal in polyethylene tanks.
- Pressurized hot and cold water
- Fresh water foot pump in galley

- Oras single lever faucets
- Holding tank 14.5 gal
- Two manual and on electric bilge pump
- Tank level indicators
- Battery driven refrigeration unit
- Engine space ventilation air inlet from deck
- Remote control fire extinguisher in engine space
- Sea water foot pump in galley

Electrical

- Shore Power 110V AC System
- 30 Amp shore power cord and inlet
- 110V outlet at chart table
- Mastervolt 110 inverter/battery charger
- 12V DC and 100V AC breaker panel located outboard of chart table
- 12V outlet at chart table
- Service battery AGM type 12V
- Starting battery 12V
- Electrical system and standing rigging grounded through the keel
- Lighting: Red/Green LED navigation lights on bow pulpit, White LED stern light on aft pulpit, Recessed halogen dome lights in main salon, Flexible chart light at Chart table, Red light above galley and chart table

Rig

- Hall spars fractional rigged clear-coated carbon fiber double spreader mast.
- Black painted aluminum boom and aluminum spreaders.
- Windex with light
- Reckman RS 3000-S2 Carbon headsail furler recessed under deck - not fully functioning and not installed at this time
- German style, continuous main sheet
- 2 spinnaker halyards at masthead and hounds
- Navtec rod rigging with discontinuous shrouds, Series 500 turnbuckles.
- Combined mainsail luff groove and track/car system
- Hall Quick vang
- Carbon retractable bowsprit in waterproof garage
- Holmatro backstay adjuster with 2 panels
- Harken Carbo foil headstay system
- Lazy Jacks

Hatches and Windows

- Lewmar foredeck hatch
- Lewmar saloon overhead hatch
- Lewmar ventilation hatch in head
- 4 fixed coaming windows
- 2 openable portholes-in aft, galley and navigation area.
- 2 openable portholes in cockpit for aft cabins
- 1 hatch to gas bottle locker (for 1 gas bottles)
- 1 hatch to lazarette

Misc.

- OD certification from builder
- IRC One design measurement certificate

Spars, Sails and Rigging

- Hall Spars fractional rigged clear coated carbon fiber double spreader mast with aluminum spreaders
- Aluminum boom painted black
- Windex with light
- Reckman RS 3000-S2 Carbon headsail furler
- German Style continuous mainsheet
- Navtec rod rigging
- Hall quick vang
- Carbon retractable bowsprit
- Hydraulic backstay adjuster
- Harken carbon foil headstay
- North Sails built in 2013 or prior include: 3DL Main, Light Jib, Med Jib, Heavy Jib, #4 Jib. Dacron Main. 1A spin, 2A spin, 4A spin,
- Newer sails available for purchase separately

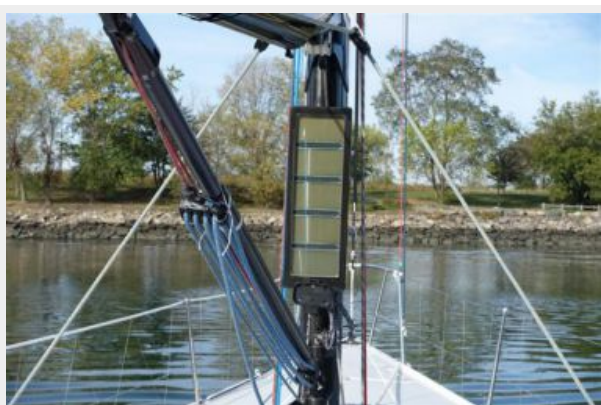
Исключения

При продаже яхты исключаются личные вещи владельца.

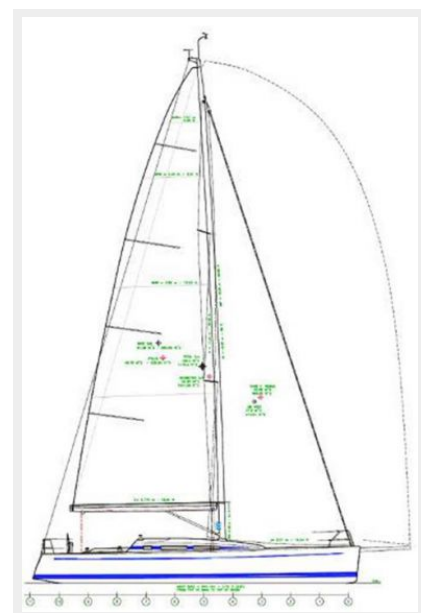
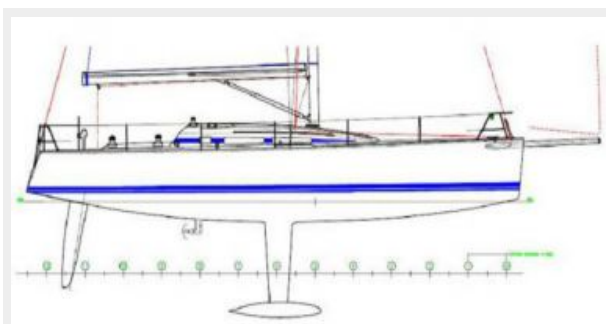
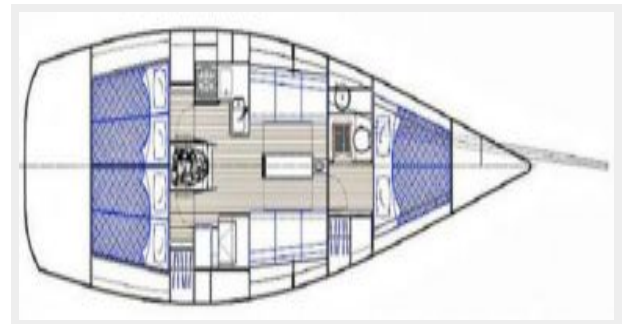
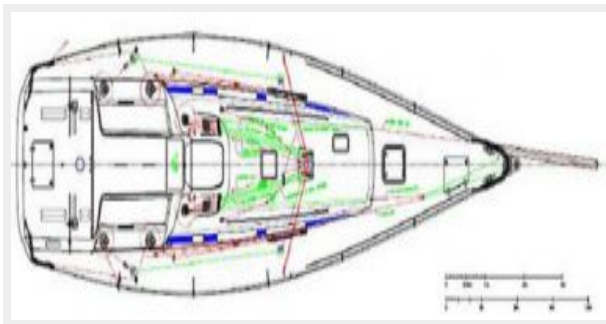
Отказ от ответственности

Компания предоставляет описание судна или яхты добросовестно, но не может гарантировать точность этой информации, а также не ручается за техническое состояние. Покупатель должен проинструктировать своих агентов или оценщиков исследовать представленную информацию более подробно, по собственному желанию. Продажа судна или яхты, изменение цены или снятие с продажи будет происходить без предварительного уведомления.

ФОТОГРАФИИ







КОНТАКТЫ

Андрей Шестаков (Andrey Shestakov) – ведущий яхтенный брокер отдела продаж яхт и судов компании Shestakov Yacht Sales Inc. Официальный представитель Shestakov Yacht Sales Inc. для русскоговорящих клиентов в центральном офисе компании в Майами/Форт Лодердейл/Флорида/США.

Контактная информация

Email: andrey@shestakovyachtsales.com

Web: shestakovyachtsales.com

Телефоны

Краснодарский край: **+7(918)465-66-44**

США, Майами, Флорида: **+1(954)274-4435**

Время работы

Понедельник – Суббота: **9:00 - 21:00**
EDT

Воскресенье: **Закрито**

Адрес



Harbour Towne Marina, 850 NE 3rd St,
STE 213, Dania, FL 33004