

LA CASEATA — PACIFIC MARINER



Судостроитель: PACIFIC MARINER

Год постройки: 2001

Модель: Моторная яхта

Цена: **ЦЕНА ЯХТЫ ПО ЗАПРОСУ**

Местонахождение: United States

Длина общая: 65' 0" (19.81m)

Ширина: 17' 3" (5.26m)

Мин. осадка: 5' 0" (1.52m)

Макс. осадка: 5' 0" (1.52m)

Крейс. скорость: 21 Kts. (24 MPH)

Макс. скорость: 25 Kts. (29 MPH)

Купить **LA CASEATA — PACIFIC MARINER** а также выбрать подходящую вам яхту из нашего каталога яхт вам поможет опытный яхтенный брокер Андрей Шестаков. На сегодняшний день компания **Shestakov Yacht Sales Inc.** имеет большое количество яхт в собственном списке продаж, а также тесно сотрудничает со всеми крупными яхтенными производителями по всему миру.

Для того чтобы купить яхту **LA CASEATA — PACIFIC MARINER** а также проконсультироваться по любому вопросу связанному с покупкой, продажей, чартером яхт позвоните по телефону **+7(918)465-66-44**.

ОГЛАВЛЕНИЕ

ОГЛАВЛЕНИЕ	2
ХАРАКТЕРИСТИКИ	5
Основная информация	5
Размеры	5
Скорость, вместимость и масса	5
Размещение	5
Корпус и палуба	6
Информация о двигателе	6
ПОДРОБНОЕ ОПИСАНИЕ	7
Updates	7
Accommodations	7
Aft Deck/Swim Platform	7
Main Salon	7
Galley	8
Pilothouse/Electronics	8
Master Stateroom	8
Master Head	9
VIP Stateroom	9
VIP Head	9
Guest Stateroom	9
Guest/Day Head	9
Crew Quarters	9
Flybridge/Electronics	10
Deck Equipment	10
Electrical System	10
Mechanical Equipment	11
Exclusions	11
Исключения	11

Отказ от ответственности	11
ФОТОГРАФИИ	12
Aft Deck	12
Aft Deck	12
Aft Deck	12
Aft Deck	12
Aft Deck Port Controls	12
Main Salon	12
Main Salon	13
Main Salon	13
Main Salon	13
Main Salon	13
Main Salon	13
Main Salon	13
Dinette	13
Dinette	14
Dinette	14
Galley	14
Galley	14
Helm	14
Galley	14
Helm	15
Helm	15
Helm	15
Helm	15
Master Stateroom	15
Master Stateroom	15
Master Stateroom	16
Master Stateroom	16
Master Head	16

Master Stateroom	16
VIP Stateroom	16
VIP Stateroom	16
VIP Head	17
VIP Stateroom	17
Guest/Day Head	17
Guest Stateroom	17
Flybridge	18
Flybridge	18
Flybrdidge	18
Flybridge	18
Flybridge Helm	18
Flybridge Helm	18
Crew Quarters - Aft	19
Flybrdige Helm	19
Engine Room	19
Crew Quarters - Aft	19
Stern	19
Engine Room	19
КОНТАКТЫ	20
Контактная информация	20
Телефоны	20
Время работы	20
Адрес	20

ХАРАКТЕРИСТИКИ

Основная информация

Тип судна: Моторная яхта

Подкатегория: Pilothouse

Модельный год: 2001

Год постройки: 2001

Страна: United States

Номер регистрации в береговой
охране: 1125934

Верх: Hardtop

Открытая палуба мостика: Да

Размеры

Длина общая: 65' 0" (19.81m)

Ширина: 17' 3" (5.26m)

Мин. осадка: 5' 0" (1.52m)

Макс. осадка: 5' 0" (1.52m)

Скорость, вместимость и масса

Крейс. скорость: 21 Kts. (24 MPH)

Макс. скорость: 25 Kts. (29 MPH)

Водоизмещение: 66000 Pounds

Вместимость воды: 285 Gallons

Вместимость сточного бака: 125 Gallons Объем топливного бака: 1100 Gallons

Размещение

Всего кают: 3

Спальные места: 6

Всего ком. состава: 3

Корпус и палуба

Материал корпуса: Fiberglass

Материал палубы: Teak

Комплектация корпуса: Modified V-Hull

Дизайнер корпуса: William Garden/Greg Marshall

Информация о двигателе

Двигатели: 2

Производитель: Caterpillar

Модель: 3406E

Тип двигателя: Inboard

Тип топлива: Diesel

ПОДРОБНОЕ ОПИСАНИЕ

Updates

- Recently re-built engines
- New generators
- New air conditioning
- Fresh bottom job
- Only hardtop on this coast

Accommodations

“La CaSeata” comfortably sleeps six owners/guests in three staterooms with additional accommodations for crew including two berths and one head. She offers great cruising speed with excellent sea keeping characteristics and exceptional close quarter maneuverability. The Pilothouse is large with a great on-deck Galley and comfortable main Salon with large windows.

Aft Deck/Swim Platform

9' Aft Deck with Boat Deck overhang and Halogen down lights Ladder to Flybridge polished stainless steel with Teak treads and hatch Portside electronic clutch and throttles w/start/stop/low speed idle Bow thruster control with on/off switch cover Built-in bench seat w/cushions & access to crew and Engine Room Port and starboard docking windlass 24V with foot switches Custom Teak deck Child gate from Aft Deck to Swim Platform Fresh water wash-down Built-in deck fender locker Flush stern flagstaff holder with Teak flagstaff Manual fire system pull Dockside water inlet with pressure valve Under-gunnels courtesy lighting Aft Deck enclosure 4-Person folding Teak table (2) Teak folding deck chairs 5' Fiberglass platform with large storage locker & auto bilge pump (3) Stainless steel staple rails 3-Step swim ladder Removable custom stainless steel grill mount (3) 6" Pop-up cleats Hot & cold shower Transom stainless steel grab rail

Main Salon

Large windows with Hunter Douglas privacy shades Traditional honey color satin finished teak paneling Aft bulkhead stainless steel framed glass Bulkhead with sliding door and retractable frame and privacy curtain Folding Teak game table (2) Leather barrel chairs Leather matching ottoman Comfortable “L-shaped” sofa with storage below, located portside Burl wood high gloss electric Hi-Lo cocktail table (6) person dining Table with slide feature JVC 42” remote control color TV with surround sound KHV Tracvision G-4 satellite TV antenna Sony DSS receiver JVC stereo AM/FM receiver DVD Player 5-Disc CD player Niles integrated remote control Teak panel to conceal TV Wet bar with refrigerator, icemaker, stainless steel sink with hot and cold water Faucet, custom crystal cabinet, accent lighting Built-in 110V electric room heater Telephone AC

distribution panel, inverter control panel, generator control panel Overhead Halogen lights with dimmers Upholstered valances with accent lighting All electrical panels concealed in teak frame tinted door cabinets

Galley

Kitchen Aid dishwasher and trash compactor Thermador 4-burner stove with oven GE Profile microwave Kenmore 22 cu. ft. double door refrigerator with ice and cold water dispenser Garbage disposal Krups coffee maker All appliances are stainless steel Corian countertop Large dual-well stainless steel sink with Grohe faucet Overhead hatch with screen Ample over and under-counter storage with Lazy Susan and pull-out shelves Amtico Vinyl flooring

Pilothouse/Electronics

Raymarine 72 mile radar with Flybridge remote and 4' open array antenna Furuno color depth finder FCV-582L Icom VHF IC-M604 Northstar GPS 952X with chart Northstar GPS 941X Raymarine electronic compass (New 2012) Nobeltec chart system with 15" NEC/LCD monitor B & G Digital depth finder B & G Digital knot log Ships clock brass 6" max. Ships barometer/brass 6" max. (2) Ray Marine E120 chart plotters with sounder/radar/sat map Wind speed brass 6" maximum ACR-RCL 100 searchlight with cover Mathers electronic clutch and throttles with synchronizers Low speed idle and manual back-up controls Naiad bow thruster 25HP hydraulic with power take off 20kW generator Simrad AP25 auto pilot (2) Electric water gauge 30" Teak well with stainless spokes Holding tank level indicator Port and starboard sliding pilothouse doors with eclipse retractable screens & custom dog-down locks Stidd helm and companion seats with arm and foot rests 24V DC electrical breaker panels 12V Electronics breaker panel Large face-forward built-in settee with cushions and storage below Dining height high gloss burl wood table Dual overhead stereo speakers with volume control Built-in 110V electric wall heater Centerline helm with full instrumentation (2) Built-in stereo speakers Chart flat with chart drawers Built-in storage cabinets and drawers Overhead Halogen down lighting Panasonic Hybrid phone system

Master Stateroom

Located midship King size walk-around berth on centerline with ultra-suede bolster Under berth drawers and night stands Reading lamps and custom Teak bookshelves Mirrored aft bulkhead Port and starboard cedar-lined hanging lockers (4) Opening portlights with screens and privacy shades Built-in teak desk with bookshelves, drawers and chair Upholstered lounge with drawer storage below AC Digital control Overhead Halogen lighting and accent lighting Telephone Fusion AM/FM/CD Stereo with built-in speakers (New 2012) B&G Built-in depth finder Built-in electric room heater Built-in 32" Samsung color TV (New 2012) Direct TV receiver DVD player Remote generator start/stop switch

Master Head

En-suite head Corian countertop with sink, Grohe stainless and single lever faucet (gold tone) Vanity, mirror with storage Under counter storage 5" Tub with shower and tempered sliding glass shower door Headhunter Jet-style fresh water head Opening port with screen and privacy shade Overhead Halogen lighting 24V Exhaust fan

VIP Stateroom

Forward stateroom with centerline queen berth with drawers below Mirrored bulkhead with reading lamps and ultra-suede bolster Cedar-lined hanging locker Overhead Halogen lighting and accent lighting Built-in 110V electric heater AC digital control Port and starboard opening ports with privacy shades Overhead escape/ventilating hatch with screen and shade Fusion AM/FM/CD Stereo with built-in speakers (New 2012) 22" Samsung color TV with remote control connected to satellite (New 2012) Samsung DVD/VHS combo Direct TV receiver Built-in storage cabinet Telephone Solid teak privacy door

VIP Head

En-suite head Corian countertop with sink and Grohe stainless faucet (gold tone) Sunken stall shower with safety glass door Vanity mirror with storage Headhunter jet-style freshwater head Opening port with screen 24V Exhaust fan Under sink storage

Guest Stateroom

Twin berths with reading lamps and night stand Drawers below both berths Cedar-lined hanging locker Opening portlight with screen and privacy shade Fusion stereo AM/FM with CD player and (2) speakers (New 2012) Digital AC control Samsung 19" color TV with remote control (New 2012) DVD Video player Halogen overhead lighting and accent lighting

Guest/Day Head

En-suite head with port stateroom entry from Foyer or Guest Stateroom Corian countertop with sink and Grohe single lever stainless steel faucet (gold tone) Stall shower with safety glass door Headhunter Jet-style freshwater head Opening port with privacy shade Overhead Halogen lighting Air conditioning outlet Vanity mirror with storage

Crew Quarters

Access from Aft Deck (2) Berths with storage below and reading lamps Telephone A/C with digital control Built-in electric room heater Sink with pull-out hot and cold water sprayer Galley

Maid head with holding tank level indicator and overhead discharge pump Freezer 6 cu. ft. Whirlpool washer and dryer stack 120V/240V (New 2012) Large parts cabinet Opening ports

Flybridge/Electronics

Optional fiberglass factory hardtop incorporated into radar arch with courtesy lights Radar arch with (2) 12V Halogen flood lights Curved windshield with tempered safety glass Complete centerline console with cover 24" Stainless steel destroyer wheel Pompanette helm and companion seats with armrest and covers Naiad bow thruster controls Ventilation hatch with cover, screen from galley overhead Built-in "L-shaped" settee with cushions, covers and storage below Rectangular table with built-in drink holders Iso Therm refrigerator 13' Boston Whaler Sport 2004 with 40HP Four Stroke Mercury with power trim and tilt Running lights, electric start, tach, cover and lift bridle Nautical Structures davit 1500lb hydraulic with power boom and rotation 24" Life ring Revere life raft, 8-man canister with cradle (New 2014) VHF Icom IC-M422 B&G Knot log B&G Depth finder Danforth 4" compass Simrad AP25 auto pilot (2008) Glendenning electronic controls Synchronizer ACR-RCL-100 searchlight Fusion stereo CD player with waterproof cover and (2) speakers (New 2012) Caterpillar electronic control digital monitors Raymarine E120 with radar/depth/chart (2008) EPIRB/ACR (New 2014)

Deck Equipment

3/8" 316 Stainless steel handrails with port and starboard boarding gates 3000Lb. 24V windlass with warping capstan 75Lb. CQR anchor with stainless steel mount and 300' chain Foredeck fender locker with fresh and seawater wash-down Port and starboard fuel fills Foredeck sun pad cushion with handrails and cover Walk-around side decks Kahlenberg dual air horns 5' Fiberglass 3-step swim platform with storage Retractable swim ladder with (3) 6" pop-up cleats Swim platform hot/cold shower Water fills port and starboard All cabin side windows 3/8" thick tempered safety glass Forward pilothouse windows 1/2" thick tempered glass Upgraded new style cabin stripe 12/2005 (3) 39" Windshield wipers dual speed with washers

Electrical System

12V/24V/110V/220V systems 20Kw Northern Lights generator (615 hours) 20kW Northern Lights generator (345 hours) – New 2012 P.T.O. for 25HP Naiad hydraulic bow thruster Fuel/water/separator filter Auto oil change Heart 2500 Watt inverter with built-in charger & designated main electrical panel breakers 24V/40 Amp battery charger 12V/20 Amp battery charger (2) 50 Amp shore cords x 100' on Cable Master Isolation transformers (1) with boost Battery parallel switch Ships electrical bonding system Cable TV/telephone shore power inlet with 50' cord Remote generator panels @ electrical panel main salon with start/stop Oil pressure, water temp, volts and hour meters

Mechanical Equipment

2 x 3406E Caterpillar 800hp (265 hrs. since major re-build – 2012) Twin disc gears 1.921 MG5114A (Re-built 2012) Auto oil change system 12V Mains and generators Racor water separator filter P.T.O. for bow thruster Remote start w/gauges on salon panel Racor fuel/water separator filter with 1160 hours Dual 1000 Racor fuel filters with vacuum gauges Naiad stabilizers w/4.5 sq. ft. fins model #754 Dripless shaft logs with crossover plumbing Aqua air A/C system with digital thermostat controls (New 2014) Chilled water system (New 2014 seawater + fresh water circulating pumps – New 2014) Reverse cycle heat and soft start system Delta T intake air demisters w/24V exhaust fans Sea Recovery water maker 800 GPD with UV filter Insta-Hot circulating fresh water 30 Gallon hot water heater 220V with engine heat exchanger 125 Gallon holding tank with deck and overboard discharge pumps Halon automatic fire system Fresh water pump 24V with accumulator tank and pressure gauge Fuel tanks with sight gauges Self-leveling fuel tanks capable of filling from port or starboard 5'8" Headroom in engine room Power-assist hydraulic steering Auto fire system with manual pull on aft deck Fuel tanks painted with bright white Imron

Exclusions

Exclusions include but are not limited to owner's personal belongings. A detailed list of exclusions to be provided at time of sale upon written request.

Исключения

При продаже яхты исключаются личные вещи владельца.

Отказ от ответственности

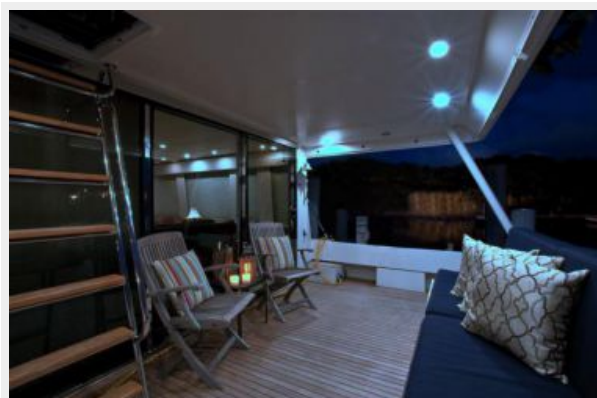
Компания предоставляет описание судна или яхты добросовестно, но не может гарантировать точность этой информации, а также не ручается за техническое состояние. Покупатель должен проинструктировать своих агентов или оценщиков исследовать представленную информацию более подробно, по собственному желанию. Продажа судна или яхты, изменение цены или снятие с продажи будет происходить без предварительного уведомления.

ФОТОГРАФИИ

Aft Deck



Aft Deck



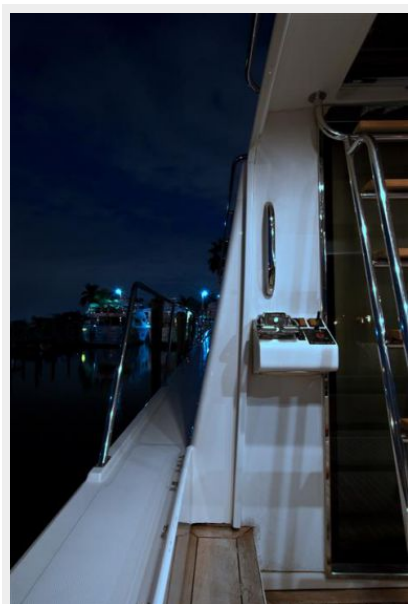
Aft Deck



Aft Deck



Aft Deck Port Controls



Main Salon



Main Salon



Main Salon



Main Salon



Main Salon



Main Salon



Dinette



Dinette



Dinette



Galley



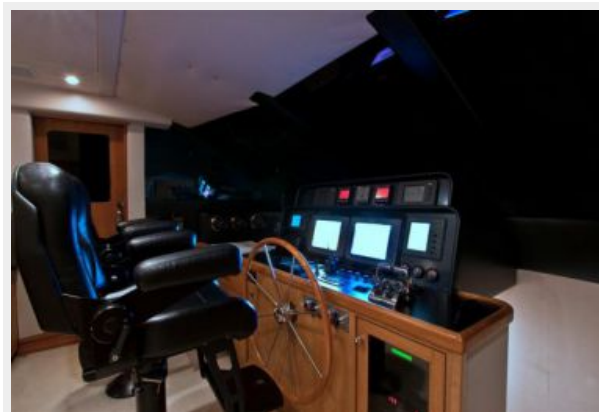
Galley



Galley



Helm



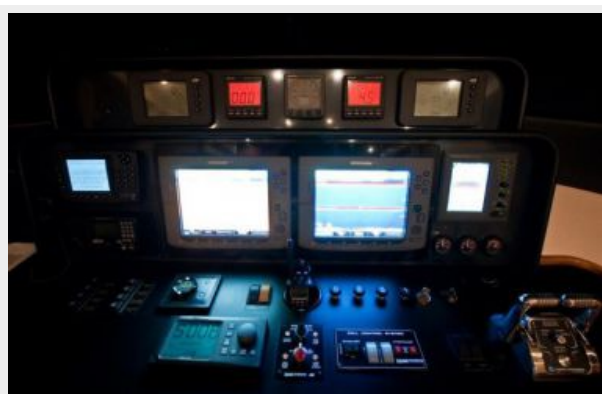
Helm



Helm



Helm



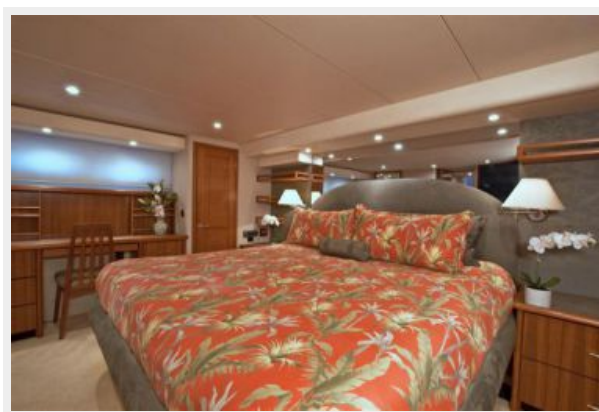
Helm



Master Stateroom



Master Stateroom



Master Stateroom



Master Stateroom



Master Stateroom



Master Head



VIP Stateroom



VIP Stateroom



VIP Stateroom



VIP Head



Guest Stateroom



Guest/Day Head



Flybridge



Flybridge



Flybridge



Flybridge



Flybridge Helm



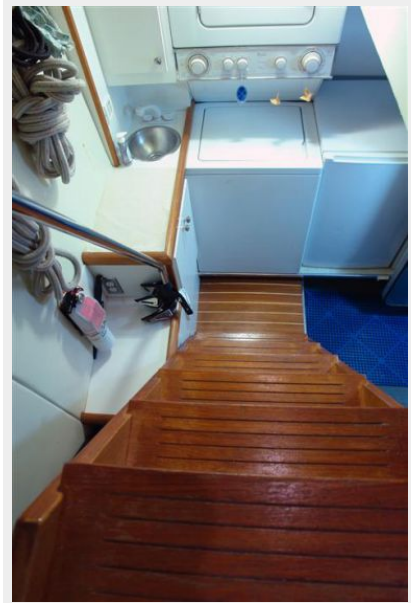
Flybridge Helm



Flybridge Helm



Crew Quarters - Aft



Crew Quarters - Aft



Engine Room



Engine Room



Stern



КОНТАКТЫ

Андрей Шестаков (Andrey Shestakov) – ведущий яхтенный брокер отдела продаж яхт и судов компании Shestakov Yacht Sales Inc. Официальный представитель Shestakov Yacht Sales Inc. для русскоговорящих клиентов в центральном офисе компании в Майами/Форт Лодердейл/Флорида/США.

Контактная информация

Email: andrey@shestakovyachtsales.com

Web: shestakovyachtsales.com

Телефоны

Краснодарский край: **+7(918)465-66-44**

США, Майами, Флорида: **+1(954)274-4435**

Время работы

Понедельник – Суббота: **9:00 - 21:00**
EDT

Воскресенье: **Закрито**

Адрес



Harbour Towne Marina, 850 NE 3rd St,
STE 213, Dania, FL 33004