

AMERICAN PRIDE — TRIDENT MARINE



Судостроитель: TRIDENT MARINE

Год постройки: 1999

Модель: Моторная яхта

Цена: **ЦЕНА ЯХТЫ ПО ЗАПРОСУ**

Местонахождение: United States

Длина общая: 123' 0" (37.49m)

Ширина: 26' 0" (7.92m)

Макс. осадка: 6' 0" (1.83m)

Крейс. скорость: 13 Kts. (15 MPH)

Макс. скорость: 19 Kts. (22 MPH)

Купить **AMERICAN PRIDE — TRIDENT MARINE** а также выбрать подходящую вам яхту из нашего каталога яхт вам поможет опытный яхтенный брокер Андрей Шестаков. На сегодняшний день компания **Shestakov Yacht Sales Inc.** имеет большое количество яхт в собственном списке продаж, а также тесно сотрудничает со всеми крупными яхтенными производителями по всему миру.

Для того чтобы купить яхту **AMERICAN PRIDE — TRIDENT MARINE** а также проконсультироваться по любому вопросу связанному с покупкой, продажей, чартером яхт позвоните по телефону **+7(918)465-66-44**.

ОГЛАВЛЕНИЕ

ОГЛАВЛЕНИЕ	2
ХАРАКТЕРИСТИКИ	3
Основная информация	3
Размеры	3
Скорость, вместимость и масса	3
Размещение	3
Корпус и палуба	4
Информация о двигателе	4
ПОДРОБНОЕ ОПИСАНИЕ	5
DIMENSIONS	5
MACHINERY	5
COMMUNICATION, NAVIGATION & ENTERTAINMENT	6
GALLEY & LAUNDRY EQUIPMENT	7
DECK EQUIPMENT	7
SECURITY, FIRE FIGHTING & SAFETY EQUIPMENT	8
ACCOMMODATIONS	8
COMMENTS	9
Исключения	10
Отказ от ответственности	10
ФОТОГРАФИИ	11
КОНТАКТЫ	14
Контактная информация	14
Телефоны	14
Время работы	14
Адрес	14

ХАРАКТЕРИСТИКИ

Основная информация

Тип судна: Моторная яхта

Подкатегория: Raised Pilothouse

Модельный год: 1999

Год постройки: 1999

Год обновления: 2013

Страна: United States

Открытая палуба мостика: Да

Размеры

Длина общая: 123' 0" (37.49m)

Ширина: 26' 0" (7.92m)

Макс. осадка: 6' 0" (1.83m)

Скорость, вместимость и масса

Крейс. скорость: 13 Kts. (15 MPH)

Макс. скорость: 19 Kts. (22 MPH)

Чистый вес: 297 Pounds

Вместимость воды: 1600 Gallons

Объем топливного бака: 9000 Gallons

Размещение

Всего кают: 4

Спальные места: 8

Каюты экипажа: 3

Спальных мест экипажа: 6

Корпус и палуба

Материал корпуса: Kevlar Composite

Дизайнер корпуса: Trident Marine

Дизайнер экстерьера: Trident Marine

Дизайнер интерьера: Dawn Moffit /
Claudette Bonville

Информация о двигателе

Двигатели: 2

Производитель: Caterpillar

Модель: C-32

Тип двигателя: Inboard

Тип топлива: Diesel

ПОДРОБНОЕ ОПИСАНИЕ

DIMENSIONS

General

Length Overall (L.O.A.): 123.00 feet (38.40 meters)

Beam: 26.00 feet (7.90 meters)

Draft: 6.60 feet (2.00 meters)

Capacities

Fuel Capacity 9,000 US Gallons (34,065 liters)

Water Capacity: 1,600 US Gallons (6,056 liters)

Watermakers: Watermakers, Inc. 1,500 U.S. Gallons p/day

Lube Oil: 250 US Gallons (946 liters)

Waste Oil: 250 US Gallons (946 liters)

Waste Water: 400 US Gallons (1,514 liters)

	Speed	Consumption per hour	RPM
Maximum:	18.6 knots	85 US Gallons p/hr	2,300
Cruising:	13.0 knots	27 US Gallons p/hr	1,680
Economical:	10.0 knots	20 US Gallons p/hr	1,280

MACHINERY

Main Engines

Engine Type: (2) Caterpillar C-32 diesels @1,600 hp each (Installed new 2013)

Drive: Propellers

Generators & Electricity

Output: 220 Volts; Phase 1; 60Hz

Generators: (2) 65 KW John Deere/Phasor generators, @ 1,800 RPM's (Installed new 2013)

Shore Power: 220 Volts; Phase 1; 60Hz

Shore Power Frequency: Atlas shorepower convertor

Batteries: (All Installed new 2013) Main Engine: 24V- alt & charger Generator: 12V- alt & charger
General Service: 24V- alt & charger Emergency: 12V- charger

Air Conditioning:

Type: Mairne Air (4) 5 tons units; 20 tons

Other Machinery

Watermakers: Watermakers, Inc. 1,500 U.S. Gallons p/day

Stabilizers: Naiad 525 Zero Speed Stabilizers

Bow Thruster: American 130Hp

Steering System: Kobelt w/ 3 hydraulic pumps for redundancy

Fuel Separator & Filtration: Racor Alfa Laval fuel centrifuge

Fresh Water System: (2) 220V New Headhunter pumps / 2014

Other: 5Hp Fire Pump: Custom fuel transfer system w/ AC&DC pumps / 2013 Delta-T ventilations systems / 2014 New inspection hatches / 2014

COMMUNICATION, NAVIGATION & ENTERTAINMENT

Communication Systems

V SATcom: KVH 7 KVH D.TV / 2012

Telephone System: Panasonic Hybrid; 24 extensions

VHF Fixed: (2) ICOM 604

Intercom: Off ship's phone system

Navigation Systems

Radar: Furuno RCU014 / 90 NM Range Furuno DRS 6 / 48 NM Range w/ NAVNET 3D

Gyrocompass: Furuno SC50

Auto Pilot: Simrad AP 70

Depth Sounder: Simrad Depth Sounder / Speed Log Furuno Depth Sounder / Speed Log / NAVNET

GPS: Atlas + weather fully integrated NEMA 2000 / Ento Furuno system and Nobletec Teme "O" (Pilothouse) (Flybridge)

Navtex: Furuno NX-500

Navigation System: Nobel Tec Time "O" w/ TEC Radar

Other: (4) Axis cameras PTZ (Pilothouse)

Entertainment System:

a. Video

Equipment

- TV's: (4) Insignia 27" (Master, Captain, Crew) (2) Samsung 20" (Guest) Samsung 32" (Country Kitchen) Samsung 55" (Aft Salon)
- VCR's: (6) – (Guest)
- b. Other: KVH Satellite TV receiver

GALLEY & LAUNDRY EQUIPMENT

Main Galley Equipment

- Cooking Equipment: Range: Kenmore Oven: Miele stainless / 2013 Microwave: Kenmore
- Refrigeration/Freezer: Subzero side-by-side
- Dishwasher: Kenmore stainless / 2013

Crew Galley/Mess Equipment

- Cooking Equipment: Microwave: Kitchen Aid
- Refrigeration/Freezer: Freezer: Subzero Fridge: Samsung

Additional Galley Equipment

- Refrigeration/Freezer: Fridge: Subzero (Flybridge)
- Other: Ice maker: U-Line (Flybridge)

Laundry Equipment:

- Main Laundry Equipment: Whirlpool dryer combo (Crew) LG washer / 2013 Maytag Maxima Washer
Maytag Maxima Dryer

DECK EQUIPMENT

- Anchor Windlass System: Maxwell 6000
- Aft Warping Capstans: (2) Maxwell 3500 (Stern Quarters)
- Anchor Chain: 550 x 1/2" chain
- Boat Crane and Davits: Marquipt; 2,500 capacity
- Accommodation Ladder: Marquipt 8-step self store - Manual
- Other: Flybridge wetbar Foredeck seating Boson's lockers Fresh water deck wash

SECURITY, FIRE FIGHTING & SAFETY EQUIPMENT

Security Equipment:

CCTV System: Axis

Cameras: (2) – (Aft deck, Engine room)

Monitors: (1) – (Pilothouse)

Ship's Safe: (2) Yes

Fire Fighting Equipment:

Fire/Heat/Smoke Detectors: Throughout w/ Ansul notified monitoring system

Fire CO2 System: Engine room & Electrical room / 2014

Fire Extinguishers: Throughout / 2014

Seawater Firefighting Stations: (2) Side decks

Safety Equipment

Life Rafts: (2) 16 persons SOLAS

Life Rings: (4)

Flares: Full U.S. Coast Guard Safety Package

ACCOMMODATIONS

General Entering the yacht from the starboard side of the main salon you experience a grand entrance with bronze sculpture atop a granite niche with beveled mirror in entry foyer. The main salon is aft, while forward is the wheelhouse, country galley and crew quarters. The dining salon is in the forward area of the salon, featuring a custom built circular Anigre wood table top and base with burl inlays complimented by six upholstered arm chairs. Display cabinets, storage for silver and flatware and additional counter height cabinets are incorporated in the room for ample storage, including wine and liquor storage. Across to port is an L-Shaped bar with four swivel stools and abundance of working space; with drawers, glass storage and housing for crystal and stemware.

Continuing aft from the dining and bar portions of the main salon brings you into the main seating area. Large, elegant and extremely comfortable with several seating arrangements with beautifully accent tables, lamps and chairs and generous windows from which to view the surroundings. An entertainment unit is centered along the aft bulkhead, while doors to port and starboard allow access to the aft deck. Additional access to the port side deck is offered by midships door located just forward of the bar. There is an on deck powder room in the forward port section of the salon.

A wide circular stairwell provides passageway to the guest accommodations foyer below. The foyer contains a mini-bar, additional storage, a full walk-in laundry room with a stacked washer and dryer with wall mounted ironing board.

The PILOTHOUSE is just forward of midship and is accessed from the starboard side entry foyer

and features a large observation settee offering a panoramic view. There is a navigator's desk, chart table and chart storage for your navigating comfort along with 2 motorized Stidd helm chairs, full electronics package for safe and reliable cruising and excellent visibility for the Captain.

A stairwell in the aft bulkhead of the Pilothouse leads to the expansive FLY BRIDGE, offering a full wet bar, settee w/ hi-low dining table, sun lounge and generous seating, all covered by a molded fiberglass hard-top with stereo speakers and lighting overhead. The helm is centered just off to port with wing controls for ease of docking. There are 2 Stidd helm chairs, ample storage and sun pad.

THE GALLEY is forward through the foyer or door to port. As you enter the country-style galley you immediately feel the charm it exudes. There is an island counter top with sink creating generous work space along with large windows to allow for spectacular 270 degree views. Further forward is access to the crew quarters.

Owner The MASTER STATEROOM is accessed from the forward end of the guest foyer, through Anigre Wood double doors which provide access to the full beam Owner's Suite. This elegant suite features a convertible room with either 2 twin beds or 1 king size bed. There is a well equipped entertainment center, built-in vanity, bench seat and storage drawers along the port hull side. A matching built-in desk with chair along the starboard bulkhead has similar drawer space. A large full walk-in cedar lined wardrobe with additional drawer space, and museum grade artwork compliment the master suite. The OWNER'S BATHROOM SUITE consists of generous his and hers bath with marble floors, counter tops and sinks. The hers to port features a vanity with sink, bidet, toilet, and whirlpool tub. The his side to starboard is similar, with walk-in shower and toilet.

Guests 2 VIP STATEROOMS with queen berths are mirror imaged beautifully with opening port lights and nightstands on either side of the berth. Both have wall mounted reading lamps, two cedar lined closets, and entertainment centers. Each en-suite head has marble countertops and flooring, ample counter and drawer space, mirrored ceilings, heated jacuzzi tub, toilet and shower.

The beautifully appointed TWIN STATEROOM is midship and very generous in size. Twin berths with a nightstand between, cedar lined closet, and en-suite bathroom with walk-in marble shower, toilet, mirrored ceilings, marble floors and countertops as well as opening port lights.

Crew Sleep up to 6 in 3 staterooms.

COMMENTS

AMERICAN PRIDE has recently completed a multi million dollar stem to stern refit at Delta Marine including : new interior décor by Claudette Bonville, fresh paint, new teak decks, new CAT C-32 Main Engines, new 65Kw Generators, Naiad Zero Speed Stabilization, upgraded & updated NAVCOM & AV, etc., etc., etc...

AMERICAN PRIDE is an exceptional opportunity to purchase a truly “turn key” yacht in “better than new” condition.

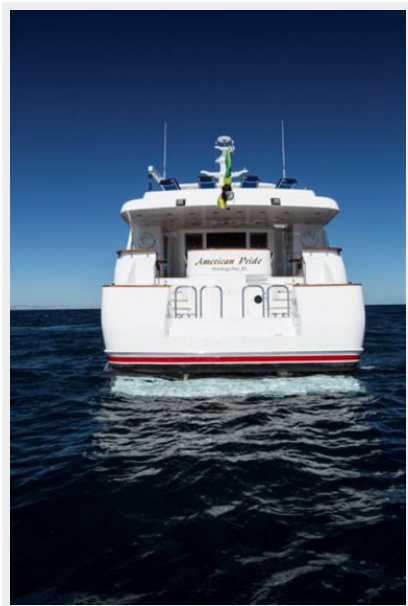
Исключения

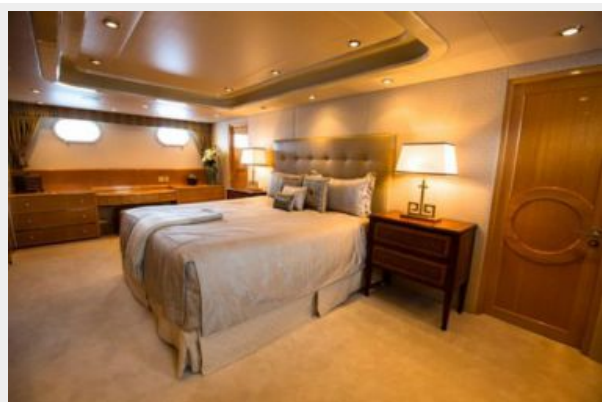
При продаже яхты исключаются личные вещи владельца.

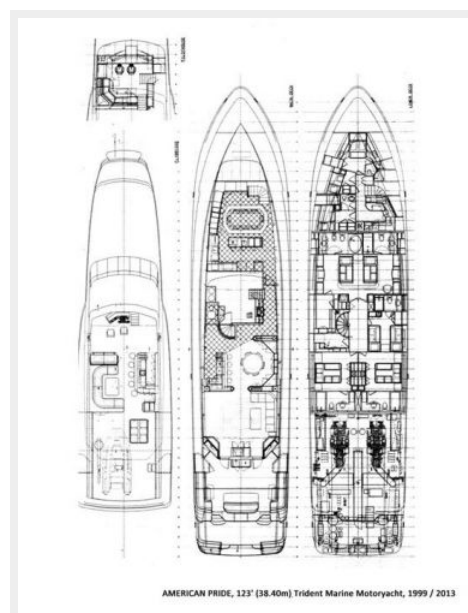
Отказ от ответственности

Компания предоставляет описание судна или яхты добросовестно, но не может гарантировать точность этой информации, а также не ручается за техническое состояние. Покупатель должен проинструктировать своих агентов или оценщиков исследовать представленную информацию более подробно, по собственному желанию. Продажа судна или яхты, изменение цены или снятие с продажи будет происходить без предварительного уведомления.

ФОТОГРАФИИ







КОНТАКТЫ

Андрей Шестаков (Andrey Shestakov) – ведущий яхтенный брокер отдела продаж яхт и судов компании Shestakov Yacht Sales Inc. Официальный представитель Shestakov Yacht Sales Inc. для русскоговорящих клиентов в центральном офисе компании в Майами/Форт Лодердейл/Флорида/США.

Контактная информация

Email: andrey@shestakovyachtsales.com

Web: shestakovyachtsales.com

Телефоны

Краснодарский край: **+7(918)465-66-44**

США, Майами, Флорида: **+1(954)274-4435**

Время работы

Понедельник – Суббота: **9:00 - 21:00**
EDT

Воскресенье: **Закрито**

Адрес



Harbour Towne Marina, 850 NE 3rd St,
STE 213, Dania, FL 33004