

NO NAME — YELLOWFIN



Builder: YELLOWFIN

Year Built: 2012

Model: Center Console

Price: PRICE ON APPLICATION

Location: United States

LOA: 42' 0" (12.80m)

Beam: 12' 0" (3.66m)

Min Draft: 1' 11" (0.58m)

Max Draft: 3' 8" (1.12m)

Max Speed: 54 Kts. (62 MPH)

Our experienced yacht broker, Andrey Shestakov, will help you choose and buy a yacht that best suits your needs **No Name — YELLOWFIN** from our catalogue. Presently, at Shestakov Yacht Sales Inc., we have a wide variety of yachts available on our sale's list. We also work in close contact with all the big yacht manufacturers from all over the world.

If you would like to buy a yacht **No Name — YELLOWFIN** or would like help answering any questions concerning purchasing, selling or chartering a yacht, please call **+1(954)274-4435**

TABLE OF CONTENTS

TABLE OF CONTENTS	2
SPECIFICATIONS	4
Overview	4
Basic Information	4
Dimensions	4
Speed, Capacities and Weight	4
Accommodations	4
Hull and Deck Information	4
Engine Information	5
DETAILED INFORMATION	6
Vessel General	6
Upgrades	7
Exclusions	7
Disclaimer	7
PHOTOS	8
Center Console	8
Cabin Forward Hatch	8
Bow Seating	8
Bow Seating	8
Bow with Anchor	8
Center Console	8
Center Console	9
Helm Station	9
Starboard View	9
Yellowfin	9
Port Cabin Entrance	9
Cabin & Head	9
Head	10

Cabin	10
Aft View	10
Aft Seating	10
Aft Seating	10
On the Hard	10
Windlass & Anchor	11
Cabin Hatch	11
Starboard Aft Refrigerator	11
Electrical Panel & Clock	11
Stereo & Remote	12
Batteries & Switches	12
Windlass & Anchor	12
Bow Thruster	12
T-Top	12
Yellowfin with Custom Canvas Covers	13
CONTACTS	14
Contact details	14
Telephones	14
Office hours	14
Address	14

SPECIFICATIONS

Overview

Boat is as new, lightly used with only 155 engine hours, stored on a boat lift and during the hurricane season in an enclosed shed.

Basic Information

Category: Center Console

Sub Category: Walk-around

Model Year: 2012

Year Built: 2012

Country: United States

Dimensions

LOA: 42' 0" (12.80m)

Beam: 12' 0" (3.66m)

Min Draft: 1' 11" (0.58m)

Max Draft: 3' 8" (1.12m)

Speed, Capacities and Weight

Max Speed: 54 Kts. (62 MPH)

Water Capacity: 82 Gallons

Fuel Capacity: 600 Gallons

Accommodations

Total Cabins: 1

Total Berths: 2

Total Heads: 1

Hull and Deck Information

Hull Material: Fiberglass

Engine Information

Engines: 3

Manufacturer: Yamaha

Model: F-350

Engine Type: Outboard

Fuel Type: Gas

DETAILED INFORMATION

Vessel General

GARMIN chart plotter MFD 7215

GARMIN radar GMR 406-HD 6 KW, 4' open array antenna

GARMIN autopilot GHP-10 with wireless remote control

GARMIN VHF 200 (2x)

GARMIN GSD 22 depth sounder with B-260 1 KW transducer

AZIMUT 1000 digital compass

ACR RCL 100D searchlight with remote control

MARCO air compressor horn

CLARION Stereo CMV-1 with JL amplifier M-6600, M-1700 and 6 speakers, 2 subwoofers

Custom console with hardtop, fixed hard glass Perspex windshield

Cabin with 2 bunks and separate compartment with electric TECMA toilet and shower

Cabin entrance door at port side, large front cabin access (fold up seat)

3 LE BROOC helm seats with arm rests

Front forward seating

Custom transom seat

Full Isinglass enclosure for steering console

Electric LOFRANS windlass with remote control

Stainless steel DELTA anchor, with stainless steel chain and rope

Bow thruster

Battery charger with shore power installation

Additional service battery

Electric windscreen wiper with fresh water supply

LED navigation, cockpit and interior lights

Refrigerator in aft seat compartment

Black water tank 23 gal (87 l)

Full manifolds for all fuel tanks

Black rub rail

Sun shade for cockpit

Swimming platform with ladder

Fold out trash bin

Covers for complete boat, steering console, seats and engines

CE Certification

Boat is as new, lightly used with only 155 engine hours, stored on a boat lift and during the hurricane season in an enclosed shed 100 hour service 2/8/2013

Upgrades

Custom fully enclosed canvas covers.

Exclusions

Owner's personal belongings.

Disclaimer

The Company offers the details of this vessel or yacht in good faith but cannot guarantee or warrant the accuracy of this information nor warrant the condition of the vessel. A buyer should instruct his representatives, agents, or his surveyors, to investigate such details as the buyer desires validated. This vessel or yacht is offered subject to prior sale, price change, or withdrawal without notice.

PHOTOS

Center Console



Cabin Forward Hatch



Bow Seating



Bow Seating



Bow with Anchor



Center Console



Center Console



Helm Station



Starboard View



Yellowfin



Port Cabin Entrance



Cabin & Head



Head



Cabin



Aft View



Aft Seating



Aft Seating



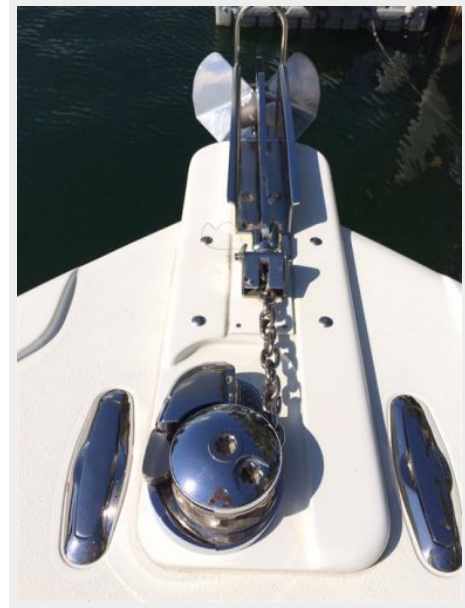
On the Hard



Cabin Hatch



Windlass & Anchor



Starboard Aft Refrigerator



Electrical Panel & Clock



Stereo & Remote



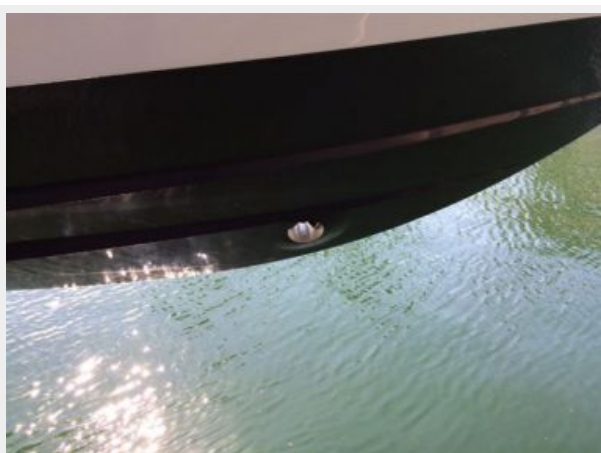
Batteries & Switches



Windlass & Anchor



Bow Tthruster



T-Top





Yellowfin with Custom Canvas Covers



CONTACTS

Andrey Shestakov, leading yacht broker of the sales department of Shestakov Yacht Sales Inc. Shestakov Yacht Sales Inc., the official representative of the Miami/Fort Lauderdale FL headquarters.

Contact details

Email: andrey@shestakovyachtsales.com

Web: shestakovyachtsales.com/en/

Telephones

USA: +1(954)274-4435

Office hours

Monday – Saturday: **9:00 - 21:00** EDT

Sunday: **closed**

Address



Harbour Towne Marina, 850 NE 3rd St,
STE 213, Dania, FL 33004