

CASCA DURA — MERRITT BOAT WORKS



Builder: MERRITT BOAT WORKS

Year Built: 2000

Model: Sport Fisherman

Price: PRICE ON APPLICATION

Location: United States

LOA: 80' 0" (24.38m)

Beam: 20' 3" (6.17m)

Max Draft: 5' 2" (1.57m)

Cruise Speed: 27 Kts. (31 MPH)

Max Speed: 34 Kts. (39 MPH)

Our experienced yacht broker, Andrey Shestakov, will help you choose and buy a yacht that best suits your needs **CASCA DURA — MERRITT BOAT WORKS** from our catalogue. Presently, at Shestakov Yacht Sales Inc., we have a wide variety of yachts available on our sale's list. We also work in close contact with all the big yacht manufacturers from all over the world.

If you would like to buy a yacht **CASCA DURA — MERRITT BOAT WORKS** or would like help answering any questions concerning purchasing, selling or chartering a yacht, please call **+1(954)274-4435**

TABLE OF CONTENTS

TABLE OF CONTENTS	2
SPECIFICATIONS	4
Basic Information	4
Dimensions	4
Speed, Capacities and Weight	4
Accommodations	4
Hull and Deck Information	4
Engine Information	5
DETAILED INFORMATION	6
Recent Updates 2012-2014	6
Galley & Laundry	6
Accommodations	7
Mechanical Equipment & Engine Detail	7
Fishing Equipment	7
Deck Equipment	8
Electrical System	8
Electronics & Navigation Equipment	8
Exclusions	9
Disclaimer	9
PHOTOS	10
Salon	10
Salon	10
Galley	10
Galley Storage	10
Galley Storage Options	10
Galley Compactor	10
Galley Appliances	11
Galley Appliances	11

Galley Appliances	11
Dinette	11
Stairs from Salon to Companionway	11
Companionway	11
Master Stateroom	12
Master Stateroom	12
Master Head	12
VIP Stateroom	12
Guest Stateroom	12
VIP Head	12
Crew Stateroom	13
Crew Head	13
Washer Dryer	13
Closet	13
Rod Locker	14
CONTACTS	17
Contact details	17
Telephones	17
Office hours	17
Address	17

SPECIFICATIONS

Basic Information

Category: Sport Fisherman

Sub Category: Sport Fisherman

Model Year: 2000

Year Built: 2000

Country: United States

Dimensions

LOA: 80' 0" (24.38m)

Beam: 20' 3" (6.17m)

Max Draft: 5' 2" (1.57m)

Speed, Capacities and Weight

Cruise Speed: 27 Kts. (31 MPH)

Cruise Speed RPM: 1850 Kts.

Max Speed: 34 Kts. (39 MPH)

Max Speed RPM: 2350 Kts.

Displacement: 120000 Pounds

Water Capacity: 400 Gallons

Fuel Capacity: 3200 Gallons

Accommodations

Total Cabins: 4

Total Heads: 4

Hull and Deck Information

Hull Material: Fiberglass

Engine Information

Engines: 2

Manufacturer: MTU

Model: 16V2000

Engine Type: Inboard

Fuel Type: Diesel

DETAILED INFORMATION

Recent Updates 2012-2014

- Complete electronics refit
- New Salon AV system
- New cockpit speakers
- New exterior cushions throughout
- New enclosure
- New covers throughout
- Cockpit paint
- Non-skid deck paint
- Strip and varnish/clear coat throughout
- Bearings and packing glens
- Added (2) Myia EPOCH reels
- Bow thruster controls on throttle handles
- LED spreader lights
- Replaced all hoses in engine room
- New batteries and wiring
- Tackle center added
- Soda blasted and bottom painted
- New carpet
- New props
- 1000 hr. service performed **2014**
- Salon windows tinted
- Re-upholstered barrel chair in Salon
- Fighting and helm chairs refinished

Galley & Laundry

- Dishwasher
- Washer
- Dryer
- Pants press in master stateroom
- Custom Merritt freezer
- Custom Merritt refrigerator
- Sub-Zero refrigerator
- Sub-Zero icemaker
- Separate oven with 4 burner stove pull out on forward bulkhead
- Microwave
- Toaster oven
- Water heater

- Pressure water system

Accommodations

- 4 staterooms
- 4 heads

Mechanical Equipment & Engine Detail

- Marine Air AC reverse cycle
- (2) extra propellers
- Quantum 30hp bow thruster
- Trim tabs
- ZF transmission 2:1-1
- (2) bilge blowers
- (2) automatic & manual bilge pumps
- Controls: tower, bridge and cockpit
- Emergency engine stop
- Engine alarm
- CO2 automatic fire extinguishing system
- Fresh water cooling system
- Fuel filters
- Fuel shut-off valve (engines)
- (2) extra propellers
- Jastram hydraulic steering
- ZF BW255 2:1 transmission
- Water Inc. watermaker 1500 gpd
- Trim tabs

Fishing Equipment

- Merritt fighting chair
- Tuna tower - Jack Hopewell 36'
- Transom door
- In deck live wells
- Cockpit controls
- Myia Epoch electric teaser reels (2012)
- Pipewelder 51' hydro outrigger
- Bait freezer
- (3) cockpit freezer on mezzanine
- Tackle center/storage (2013)

- Cockpit tackle center

Deck Equipment

- Marquipt anchor with lines
- (6) person Switlich life raft
- Hydraulic Muir windlass
- Anchor with lines
- Bow pulpit
- Flybridge curtains (new 2013)
- Coast Guard Approved Safety package
- Teak deck
- Saltwater deck washdown system
- Transom lights
- Life jackets
- Navigation lights
- LED spreader lights (new 2014)
- Kahlenberg air horns
- Eskimo ice machine

Electrical System

- (6) batteries (new 2013)
- New power cords 2012
- (2) battery chargers
- Automatic battery charger
- Phasor 32kw generator (2)
- Electrical system: DC 12V, 24V; AC 110V, 220V
- Battery parallel switch

Electronics & Navigation Equipment

- **FULL REFIT 2013**
- Compass
- 3 x Furuno MU190HD displays
- Simrad 25kw radar
- Simrad 6kw radar
- Simrad BSM-2 sounder
- AIRMAR R509C-LM transducer
- 3 x Simrad NSO processors
- 3 x Simrad OP 40

- 2 x ICOM 604A VHF
- KVH Traco phone FB150 compact dome
- 4 x engine room cameras
- Jastran rudder system
- KVH satellite communications (2013)
- Stereo (2013)
- Cockpit speakers
- Simrad WM-2 weather/radio module
- Simrad NAIS-400
- (3) Furuno RD-33
- 2 x ICOM VHF Command Mic 3 (tower)
- Simrad NSS 12 (tower)

Exclusions

Owner's personal belongings.

Disclaimer

The Company offers the details of this vessel or yacht in good faith but cannot guarantee or warrant the accuracy of this information nor warrant the condition of the vessel. A buyer should instruct his representatives, agents, or his surveyors, to investigate such details as the buyer desires validated. This vessel or yacht is offered subject to prior sale, price change, or withdrawal without notice.

PHOTOS

Salon



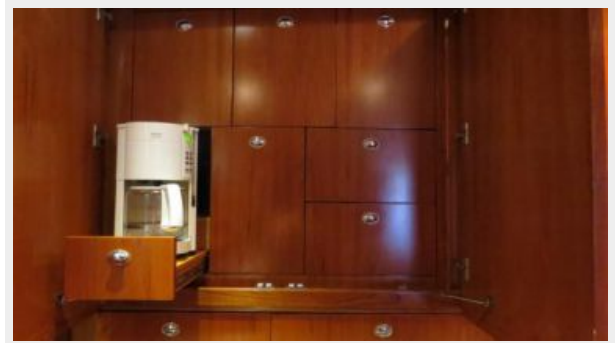
Salon



Galley



Galley Storage



Galley Storage Options



Galley Compactor



Galley Appliances



Galley Appliances



Galley Appliances



Dinette



Stairs from Salon to Companionway



Companionway



Master Stateroom



Master Stateroom



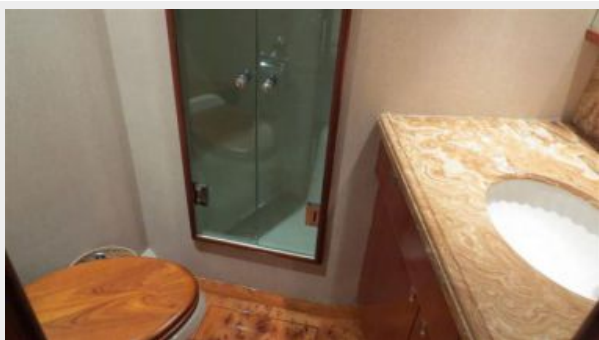
Master Head



VIP Stateroom



VIP Head



Guest Stateroom



Crew Stateroom



Crew Head



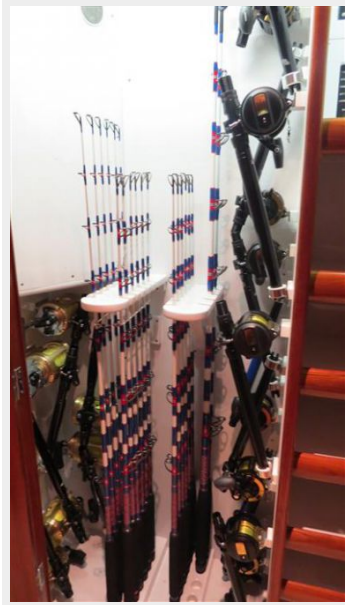
Washer Dryer



Closet



Rod Locker







CONTACTS

Andrey Shestakov, leading yacht broker of the sales department of Shestakov Yacht Sales Inc. Shestakov Yacht Sales Inc., the official representative of the Miami/Fort Lauderdale FL headquarters.

Contact details

Email: andrey@shestakovyachtsales.com

Web: shestakovyachtsales.com/en/

Telephones

USA: +1(954)274-4435

Office hours

Monday – Saturday: **9:00 - 21:00** EDT

Sunday: **closed**

Address



Harbour Towne Marina, 850 NE 3rd St,
STE 213, Dania, FL 33004