

## GOLDEN TOUCH — WESTSHIP



**Builder:** WESTSHIP

**Year Built:** 1992

**Model:** Motor Yacht

**Price:** PRICE ON APPLICATION

**Location:** United States

**LOA:** 98' 0" (29.87m)

**Beam:** 23' 6" (7.16m)

**Max Draft:** 6' 0" (1.83m)

**Cruise Speed:** 12 Kts. (14 MPH)

**Max Speed:** 17 Kts. (20 MPH)

Our experienced yacht broker, Andrey Shestakov, will help you choose and buy a yacht that best suits your needs **Golden Touch — WESTSHIP** from our catalogue. Presently, at Shestakov Yacht Sales Inc., we have a wide variety of yachts available on our sale's list. We also work in close contact with all the big yacht manufacturers from all over the world.

If you would like to buy a yacht **Golden Touch — WESTSHIP** or would like help answering any questions concerning purchasing, selling or chartering a yacht, please call **+1(954)274-4435**

---

# TABLE OF CONTENTS

---

TABLE OF CONTENTS	2
SPECIFICATIONS	4
Overview	4
Basic Information	4
Dimensions	4
Speed, Capacities and Weight	4
Accommodations	4
Hull and Deck Information	5
Engine Information	5
DETAILED INFORMATION	6
Recent Upgrades	6
Accommodations	6
Main Deck	6
Lower Deck	7
Galley	7
Pilothouse	7
Fly Bridge	8
Hull & Deck	8
Electronics & Navigation	9
Audio & Visual Equipment	9
Electrical System	9
Mechanical	10
Safety	10
Exclusions	10
Disclaimer	11
PHOTOS	12
CONTACTS	15
Contact details	15

---

Telephones	15
Office hours	15
Address	15

---

---

# SPECIFICATIONS

---

## Overview

---

COME SEE HER AT THE FORT LAUDERDALE BOAT SHOW!

The 98 Westship was designed with families in mind offering large spaces, 3 staterooms, a cockpit, and a spacious flybridge. "Golden Touch" has been very well cared for and continuously updated. New contemporary interior, New sky lounge seating 14 people, 12 large windows in the hull giving all staterooms the feeling of being on deck, Complete Awlgrip paint job, Complete engine overhauls on both main engines - ZERO hours and a Captain's quarters for a crew of 4.

**TRADES ACCEPTED!**

## Basic Information

---

**Category:** Motor Yacht

**Model Year:** 1992

**Year Built:** 1992

**Country:** United States

## Dimensions

---

**LOA:** 98' 0" (29.87m)

**Beam:** 23' 6" (7.16m)

**Max Draft:** 6' 0" (1.83m)

## Speed, Capacities and Weight

---

**Cruise Speed:** 12 Kts. (14 MPH)

**Max Speed:** 17 Kts. (20 MPH)

**Displacement:** 126000 Pounds

**Water Capacity:** 750 Gallons

**Fuel Capacity:** 5500 Gallons

## Accommodations

---

**Total Cabins:** 3

**Crew Cabin:** 4

---

## Hull and Deck Information

---

**Hull Material:** Fiberglass

---

## Engine Information

---

**Engines:** 2

**Manufacturer:** Detroit Diesel

**Model:** 12V92 TA

**Engine Type:** Inboard

**Fuel Type:** Diesel

---

# DETAILED INFORMATION

---

## Recent Upgrades

---

- Both main engines completely rebuilt - ZERO hours.
- New A/C compressors and air handlers
- Stabilizers rebuilt
- All new AGM gel cell batteries
- Complete pilothouse and flybridge refit with electronics upgrade
- 2 Samsung 27" 550 series LED monitors
- 2 Argonaut TFlex G615XLR 15" marine monitors 1200 Nit
- Pilothouse - Icom IC-M604 VHF with 2 Commander Mic IIIs
- Flybridge - Icom IC-504 VHF
- Chetco V-gauge Remote Pro
- 4 Chetco V-gauge G125C 5.7" touchscreen, waterproof, sunlight viewable
- All new sending units to support Chetco system
- Nobeltec Admiral 11
- 2 Interlink Electronics handheld mice
- Flybridge sundeck conversion

## Accommodations

---

Sleeps 6 owners and guest in 3 staterooms, Crew accommodations are forward and sleep 4 in two cabins. Easy conversion to 4 staterooms and crew cabins aft.

Owner's full beam suite has a king size bed with en-suite his and hers head with a double shower. There is also walk-in closets. The starboard guest stateroom has a double bed with en-suite head and shower while the port guest stateroom is equipped with twin beds with en-suite head and shower.

You may board the vessel either port or starboard at approximately mid-ship. On the port side, you enter into a hallway which leads aft to the main salon or forward and down a curved stairway to the master and two guest staterooms. Also, in the hallway are steps leading to the pilothouse. On the starboard side, you enter a similar hallway which leads aft to the main salon and forward to the country kitchen dining/galley area, the on-deck powder room is also located in this entrance lobby. There are also steps leading up to the pilothouse from the hallway.

## Main Deck

---

Starting on the main deck aft, there is an open aft deck area lounge with furniture, ottoman and wet bar. There is also access to the flybridge deck through a newly installed hatch. Down a few steps is a fishing cockpit which features an outdoor Jenn Air grill and ships control station. There

is tremendous storage in the lazarette and a center line transom door which leads to a large swim platform. There are two stern warping winches port and starboard. 100 gallon gas tank as well as a hose for diesel to fill small powerboats.

Moving forward into the main salon is a large L-shaped seating area on the starboard side. Further forward on the port side is a curved bar with granite top and seating for 4. Just forward of this is the dining area with seating for 8. The salon is decorated in neutral colors, and the paneling throughout the vessel is light, cream colored ash.

Moving forward on the starboard side through a hallway is an on-deck powder room. Next and forward is a large country kitchen style galley, a very popular option for today's yachts. The galley features an informal dining area which is bright and airy with good visibility. All countertops are Corian.

---

## Lower Deck

---

Beginning forward on the lower deck is the crew quarters accessed from the country kitchen. The captain is to port with a double berth. All the way forward is the V-berth for two additional crew members. There are also two heads with showers.

From the port side hall on the main deck and down a curved stairway which opens up to a lower foyer off of which are the master stateroom and 2 guest cabins. The master stateroom features a center line king size berth against the forward bulkhead. There is a TV, vanity table, love seat and a large walk in closet. Forward are his and hers head which are entered from either side of the bed, and a double shower. There is also a refrigerator and complete stereo system.

---

## Galley

---

- Kitchen Aid refrigerator with deep freeze
- Whirlpool quiet partner I dishwasher
- Kitchen Aid icemaker
- Double sink
- Waste disposal
- Kitchen Aid microwave
- Icom IC-M604 VHF with 2 commander Mic
- Small refrigerator in the salon and on the flybridge
- U-line wine cooler
- Jenn Air grill on aft deck
- GE refrigerator/freezer on topside in utility room

---

## Pilothouse

---

The pilothouse is newly refitted with:

- (3) Samsung 27" 550 series LED monitors
- Chetco V-gauge remote Pro
- (2) Chetco C-gauge G12C 5.7" waterproof/Sunlight viewable touchscreens
- Icom Ic-M6004 VHF with 2 commander mic
- Nobletec Admiral 11
- Back-up Furuno NavNet radar
- Depth sounder
- Chart Navigator units
- (2) Interlink electronics handheld mice

The pilothouse is entered from either port or starboard side and up three steps. It is laid out well with excellent viability. There is one helm seat and a settee on the starboard side with a table and seating for 4.

---

## Fly Bridge

---

Up from the pilot house is the newly refitted flybridge with:

- (2) Argonaut TFlex G615XLR 15" daylight marine monitors 1200 Nit.
- (2) Chetco V-gauge G12C 5.7" waterproof and sunlight viewable monitoring/control touchscreens
- Back up Furuno NavNet radar
- Depth sounder
- Chart navigation unit

There are wing controls both port and starboard. The flybridge features a large curved bar with 4 stools and an L-shaped seating area perfect for dining or lounging. The flybridge also features a recent sundeck conversion with 316 stainless steel safety rails. The Nautical structures boat davit is located on the port side, ready to lift jet skies. there is also pipe welders and a soft Bimini top providing shade for cruising and dining.

---

## Hull & Deck

---

- All exterior decks are non-skid surfaced
- Bow and stern staff for ensign and pennant
- Marquipt 5 step aluminum boarding ladder with brackets for both port and starboard
- Fresh water wash-down on foredeck, flybridge and cockpit
- Maxwell 3500 anchor with 400' of 1/2" chain
- (2) spare fortress anchors
- Marquipt 1500 lb hydraulic davit with 6' extension



---

## Electronics & Navigation

---

- (2) Ritchie 6" compasses
- (1) Icom M125 VHF with 18' antenna
- (1) Standard horizon VHF with 18' antenna
- (2) Datamarine 3570 MFD depth, speed, heading, temp wind speed and direction with remote in master stateroom
- (1) Furuno FCF 522 color depth with bronze transducer
- (5) Rudder angle indicators
- (1) Raytheon E80 GPS
- TV monitor card
- Battery back-up 115v AC 500w
- NavNet VX2 multi radar chart plotter
- Alden 406 Cat 1 auto satellite EPIRB
- Datatronics 360TC antenna mounted under FB
- Sharpe FO 332 fax copier
- ComSat TV dish
- 1200 watt uninterrupted power supply for satcom Gyro
- Samsung/gateway keyboard with hard drive
- Anschutz gyro compass with repeater
- (2) Com Nav 2001 autopilots with control head, dist, box, compass/sensor/gyro interfaced 24V DC variable speed pump
- Full dual control systems and transfer circuits for autopilots from one station to the other
- Panasonic 61510 telephone system with 11 ash white phones and fax identifier max 6 lines 16 extensions
- Buell Stromos triplex air horns
- (1) 1-mile ACR electronics remote searchlight
- (2) 3-mile ACR electronics searchlights

---

## Audio & Visual Equipment

---

- (7) TV's
- (6) DVD players
- (7) AM/FMCS players
- Surround sound Hi-Fi stereo system in main salon
- Denon mini tower Hi-Fi system in master stateroom

---

## Electrical System

---

- (2) Northern Lights 36kw
- (2) 100 amp shore connection inlets forward and aft
- (2) 25 Kva isolation transformers

- (2) New AGM 24v and 12v gel cell batteries
- (1) 50 amp 24v batter charger
- (1) 30 amp 12v battery charger

## Mechanical

---

Main engines are twin GM 12V92 TA diesels. Both main engines have been completely rebuilt. The engine room is entered through the fishing cockpit. On the starboard side is the main electrical panel and on the port side is a workshop and storage area for SCUBA gear, fishing rods and an extra freezer.

- 180,000 BTU hydronics air conditioning
- Westmar 40 HP bow thruster
- Naiad 301 stabilizers
- Fire extinguisher system
- Bilge alarms (2) in engine room (1) in crew quarters (1) aft bilge
- Heat sensors in engine room, pilothouse, crew quarters and aft companionway
- Engine high water temperature for both engines
- Engine oil pressure for both generators
- Visual alarm schematic engraved in black and laminated
- Remote alarm, audio and visual in captain's cabin
- Controls for naiad stabilizers
- Controls for Westmar bow thruster
- Hynautic power steering system
- Racor fuel filters
- Water heater
- Sewage system
- Bilge pump system
- 40 gal wast oil tank
- Microphor toilets with 440 gallon holding tanks
- Marine air conditioning system plus two inline heaters for circulation water rated at 20kw

## Safety

---

- Complete set of life jackets
- Life rings, upper and lower
- Full Coast Guard package
- 10 man Switlik life raft with hydro-static release.

## Exclusions

---

Owner's personal belongings.

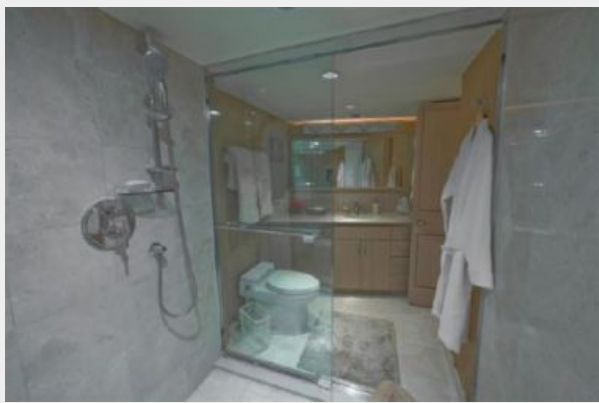
## Disclaimer

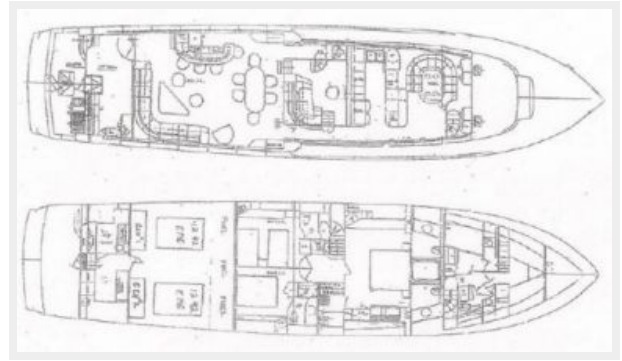
---

The Company offers the details of this vessel or yacht in good faith but cannot guarantee or warrant the accuracy of this information nor warrant the condition of the vessel. A buyer should instruct his representatives, agents, or his surveyors, to investigate such details as the buyer desires validated. This vessel or yacht is offered subject to prior sale, price change, or withdrawal without notice.

# PHOTOS







# CONTACTS

---

Andrey Shestakov, leading yacht broker of the sales department of Shestakov Yacht Sales Inc. Shestakov Yacht Sales Inc., the official representative of the Miami/Fort Lauderdale FL headquarters.

## Contact details

---

Email: [andrey@shestakovyachtsales.com](mailto:andrey@shestakovyachtsales.com)

Web: [shestakovyachtsales.com/en/](http://shestakovyachtsales.com/en/)

## Telephones

---

USA: +1(954)274-4435

## Office hours

---

Monday – Saturday: **9:00 - 21:00** EDT

Sunday: **closed**

## Address

---



Harbour Towne Marina, 850 NE 3rd St,  
STE 213, Dania, FL 33004