

## MIYAR OBHUR — EDGEWATER



**Builder:** EDGEWATER

**Year Built:** 2009

**Model:** Center Console

**Price:** PRICE ON APPLICATION

**Location:** Saudi Arabia

**LOA:** 38' 8" (11.79m)

**Beam:** 11' 7" (3.53m)

**Min Draft:** 1' 11" (0.58m)

**Cruise Speed:** 40 Kts. (46 MPH)

**Max Speed:** 45 Kts. (52 MPH)

Our experienced yacht broker, Andrey Shestakov, will help you choose and buy a yacht that best suits your needs **Miyar Obhur — EDGEWATER** from our catalogue. Presently, at Shestakov Yacht Sales Inc., we have a wide variety of yachts available on our sale's list. We also work in close contact with all the big yacht manufacturers from all over the world.

If you would like to buy a yacht **Miyar Obhur — EDGEWATER** or would like help answering any questions concerning purchasing, selling or chartering a yacht, please call **+1(954)274-4435**

---

# TABLE OF CONTENTS

---

TABLE OF CONTENTS	2
SPECIFICATIONS	3
Overview	3
Basic Information	3
Dimensions	3
Speed, Capacities and Weight	3
Accommodations	4
Hull and Deck Information	4
Engine Information	4
PHOTOS	5
Side	5
Bow Seating	5
Helm	5
Aft	5
Helm Seating	6
Cockpit	6
Head	6
Grill + Sink	6
Engines	6
CONTACTS	7
Contact details	7
Telephones	7
Office hours	7
Address	7

# SPECIFICATIONS

---

## Overview

---

Unsinkable Engines serviced every 50 hours Fully rigged Helm 2 x 12" Furuno NavNet 3D  
 Furuno DEF 1 & 3 Furuno digital radar Furuno weather station 2 x Airmar transducers (1000kW  
 & 3000kW) Simrad autopilot AP28 VHF w/ digital antenna SAT compass Lumar windlass control  
 Lencho trim tabs Sea star hydraulic steering Bow thruster 2 x bolster helm seating

Cockpit & Foredeck U-shape bow seating and storage Removable table Lumar windlass  
 Foldaway aft seating Storage box

Cockpit Clarion stereo w/ iPod hook up & DVD 6 x speakers 2 x amplifiers Fridge Grill Sink  
 Storage drawers Aluminum hard top

Transom & Head Foldaway transom seating Storage box Transom shower Raw & fresh water  
 wash down w/ pump Toilet w/ shower

## Basic Information

---

**Category:** Center Console

**Model Year:** 2009

**Year Built:** 2009

**Country:** Saudi Arabia

**Cockpit:** Yes

## Dimensions

---

**LOA:** 38' 8" (11.79m)

**Beam:** 11' 7" (3.53m)

**Min Draft:** 1' 11" (0.58m)

## Speed, Capacities and Weight

---

**Cruise Speed:** 40 Kts. (46 MPH)

**Max Speed:** 45 Kts. (52 MPH)

**Water Capacity:** 31.70064624 Gallons

**Fuel Capacity:** 488.7182962 Gallons

---

## Accommodations

---

**Total Heads:** 1

---

## Hull and Deck Information

---

**Hull Material:** GRP

---

## Engine Information

---

**Engines:** 2

**Manufacturer:** Yamaha

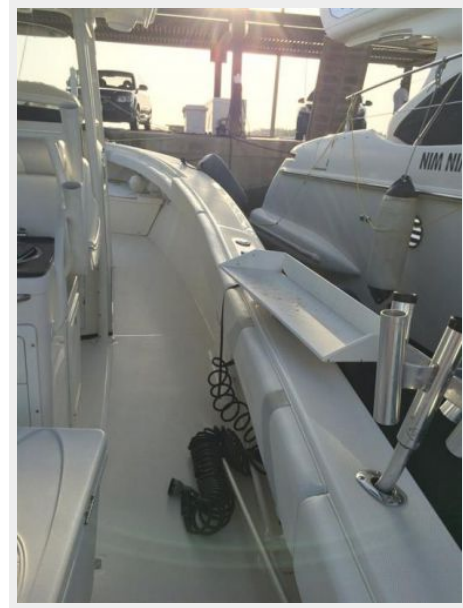
**Model:** F350

# PHOTOS

**Bow Seating**



**Side**



**Aft**



**Helm**



### Helm Seating



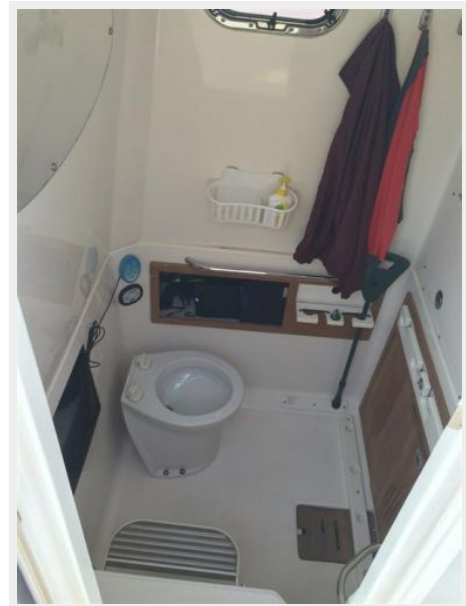
### Cockpit



### Grill + Sink



### Head



### Engines



# CONTACTS

---

Andrey Shestakov, leading yacht broker of the sales department of Shestakov Yacht Sales Inc. Shestakov Yacht Sales Inc., the official representative of the Miami/Fort Lauderdale FL headquarters.

## Contact details

---

Email: [andrey@shestakovyachtsales.com](mailto:andrey@shestakovyachtsales.com)

Web: [shestakovyachtsales.com/en/](http://shestakovyachtsales.com/en/)

## Telephones

---

USA: +1(954)274-4435

## Office hours

---

Monday – Saturday: **9:00 - 21:00** EDT

Sunday: **closed**

## Address

---



Harbour Towne Marina, 850 NE 3rd St,  
STE 213, Dania, FL 33004