

BOOGIE — LIBERTY YACHTS



Builder: LIBERTY YACHTS

Year Built: 2006

Model: Sport Fisherman

Price: PRICE ON APPLICATION

Location: United States

LOA: 45' 6" (13.87m)

Beam: 16' 0" (4.88m)

Min Draft: 3' 6" (1.07m)

Cruise Speed: 32 Kts. (37 MPH)

Max Speed: 37 Kts. (43 MPH)

Our experienced yacht broker, Andrey Shestakov, will help you choose and buy a yacht that best suits your needs **Boogie — LIBERTY YACHTS** from our catalogue. Presently, at Shestakov Yacht Sales Inc., we have a wide variety of yachts available on our sale's list. We also work in close contact with all the big yacht manufacturers from all over the world.

If you would like to buy a yacht **Boogie — LIBERTY YACHTS** or would like help answering any questions concerning purchasing, selling or chartering a yacht, please call **+1(954)274-4435**

TABLE OF CONTENTS

TABLE OF CONTENTS	2
SPECIFICATIONS	4
Overview	4
Basic Information	4
Dimensions	4
Speed, Capacities and Weight	4
Accommodations	4
Hull and Deck Information	5
Engine Information	5
DETAILED INFORMATION	6
Accommodations and Layout	6
Salon	6
Head	6
Galley	6
Master	7
Miscellaneous Deck and Hull	7
Tankage	7
Cockpit	8
Bridge	8
Electronics and Navigation	8
Electrical Equipment	9
Engine Equipment	9
Fishing Equipment	10
Salesman's Remarks	10
Exclusions	10
Disclaimer	10
PHOTOS	12
CONTACTS	23

Contact details	23
Telephones	23
Office hours	23
Address	23

SPECIFICATIONS

Overview

The 45 was the second Liberty built by a very knowledgeable owner with the desire to build the finest riding mid-range custom on the water. The Liberty 45 offers unparalleled ride, performance and economy; designed to go anywhere, anytime in comfort and safety. Built to fish long distance and get there quickly, her huge tournament-style cockpit will impress the most avid sportsman and tournament enthusiast.

Basic Information

Category: Sport Fisherman

Model Year: 2006

Year Built: 2006

Country: United States

Vessel Top: Hardtop

Fly Bridge: Yes

Dimensions

LOA: 45' 6" (13.87m)

Beam: 16' 0" (4.88m)

Min Draft: 3' 6" (1.07m)

Speed, Capacities and Weight

Cruise Speed: 32 Kts. (37 MPH)

Max Speed: 37 Kts. (43 MPH)

Displacement: 45000 Pounds

Water Capacity: 120 Gallons

Fuel Capacity: 700 Gallons

Accommodations

Total Cabins: 1

Sleeps: 4

Total Heads: 1

Hull and Deck Information

Hull Material: Fiberglass

Hull Finish: Plastic

Engine Information

Engines: 2

Manufacturer: MAN

Fuel Type: Diesel

DETAILED INFORMATION

Accommodations and Layout

The beautiful and spacious teak and granite interior is luxurious with a simple owner-friendly design. The master is forward with a Queen walk-around with storage. The settee converts to a double berth. The single head with separate shower is easily accessible from the companionway.

Salon

- Settee that converts to bunk
- Storage
- Dinette with seating for 3
- Drawer storage to Starboard
- Teak and Holly Sole
- Flat screen TV
- Whisper wall system
- Halogen Lighting - recessed

Head

- Raritan Atlantes Fixture
- Electra Sand Raritan
- Vanity
- Teak framed mirror
- Granite counter top
- Molded shower with glass door
- Halogen Lighting - recessed
- Whisper wall system

Galley

- U shaped galley to port with beautiful Granite tops and teak veneers
- Refrigeration - Sub Zero, 2 drawers
- Freezer - Sub Zero, 2 drawers
- U Line Ice Maker
- Stainless sink
- Microwave - Tappan
- Kenyon Cooktop

- Teak veneer cedar lined cabinets
- Hot water Insta-hot
- Window with curtain
- Amtico sole

Master

The large, private, and comfortable stateroom is forward with privacy door.

- Queen sized berth with storage Actuated lift
- Whisper wall system
- Hanging locker (2) cedar lined
- Teak cabinets
- Teak accents
- Carpeting - Berber
- Custom soft goods
- Safety hatch
- Bilge access

Miscellaneous Deck and Hull

Constructed for trouble-free ownership and designed to reduce maintenance, her vacuum bagged construction features a Fiberglass molded Vinyl Lester hull with a solid fiberglass bottom. Vinyl Lester material is impervious to water to eliminate any chance of maintenance issues. The hull sides, decks and all components are built with the highest quality man made closed cell foam material for strength and durability.

- Central drain system
- Engine boxes insulated
- Scuppers oversized
- Stainless hardware
- Underwater lights (2)
- Water Heater Stainless 6 Gal. SEAWARD
- Bronze thru hulls
- Manganese Bronze high speed rudders
- Ice Machine Eskimo Dometic 600 LBS PD
- Water Maker Spectra 500 GPD

Tankage

Fuel 700 Gallons

Water 104 Gallons

Waste: None Raritan Electra Sand

Cockpit

- Teak Decks
- Teak Covering Boards
- Teak Coming
- Engine Box pads with back rest
- Wash down fresh water
- Wash down salt water
- Overhead lighting
- Lazarette access

Bridge

- Hard Top - High Seas Stuart
- Enclosure - 3 sided EZ2CY
- Console - low profile
- Forward seating with storage
- Port side seating with storage
- Teak Pod
- Helm Chairs - Murray Brothers Teak (2)
- Lighting - Halogen recessed
- Wheel - Stainless Palm Beach
- Shifters - Stainless Palm Beach

Electronics and Navigation

- Furuno Nav-Net Screens VX2 (2)
- Furuno radar 72 Mile
- Furuno sounder
- Furuno RD-30
- Garmin 740 GPS
- Simrad Auto Pilot AP-26
- Standard Horizon VHF (2)
- Spotlight ACR
- SSB ICOM

- Compass Richie 6"
- Stereo

A/V SYSTEM

- Two flat screen TVs
- Direct TV™ tuners
- Tracvision™ satellite antenna,
- stereo/tuner

Electrical Equipment

- Generator - 12 KW Fisher Panda
- Distribution panel A/C 110/ 240 D/C 12/24
- 60 AMP 240 charger
- AGM Four group 31 AGM batteries and one group 24 AGM
- Shore Power 50 Amp single
- Shore power Hubel fixture
- Lighting interior Halogen 12 V
- Lighting Interior 110 V
- Fuel Gauges
- Water Gauges

Engine Equipment

Engines: Man DE2848-LE423 900 HP CR (2)

Stb: 6301 088 049 1067

Prt: 6301 088 036 1067

Man Engine Management system

Gears Twin Disc. MGX-51140

Stb 5JF031

Prt 5JF030

- Twin Disc Quick Shift controls
- Synchronizers

- RACOR 1000 series 2020
- Sound down insulation
- Marine Exhaust risers
- Marine Exhaust surge tubes
- Fire Boy Suppression System
- Oil Change system - Change X
- Hynautic Steering
- Wheels Nibral 5 blades
- Wheels Nibral 4 Blades 24X39 Spares
- Fuel primer pumps

Fishing Equipment

- Rupp 36' triple spreader riggers
- Fighting Chair - Murray Brothers Teak
- Fish Boxes in deck insulated (2)
- Fish Box Macerator pumps (2)
- Transom door
- 12 V outlets
- Live well pump

Salesman's Remarks

Tournament designed, this fantastic opportunity is perfect for the owner who desires a special Florida custom ready to fish long distances in comfort and safety. Performance, speed and beautiful looks compliment her fantastic sea keeping ability. Ask any Liberty owner; this proven hull will fish and travel when her bigger rivals are tied to the dock waiting it out. This great buy is priced well below market. She is fully serviced, in Bristol condition and tournament ready. Call to set up a convenient appointment to view this spectacular tournament machine. You won't be disappointed.

Exclusions

Owner's personal belongings.

Disclaimer

The Company offers the details of this vessel or yacht in good faith but cannot guarantee or warrant the accuracy of this information nor warrant the condition of the vessel. A buyer should instruct his representatives, agents, or his surveyors, to investigate such details as the buyer desires validated. This vessel or yacht is offered subject to prior sale, price change, or withdrawal

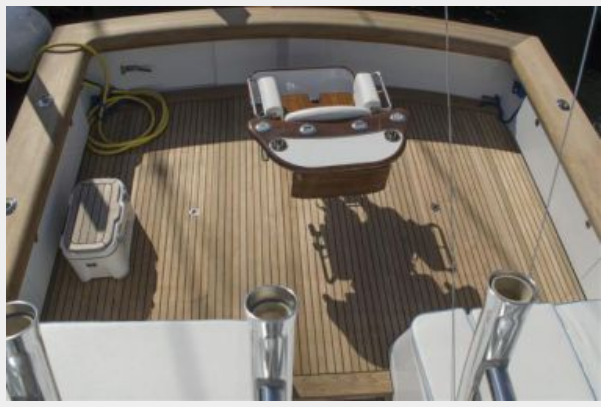
without notice.

PHOTOS



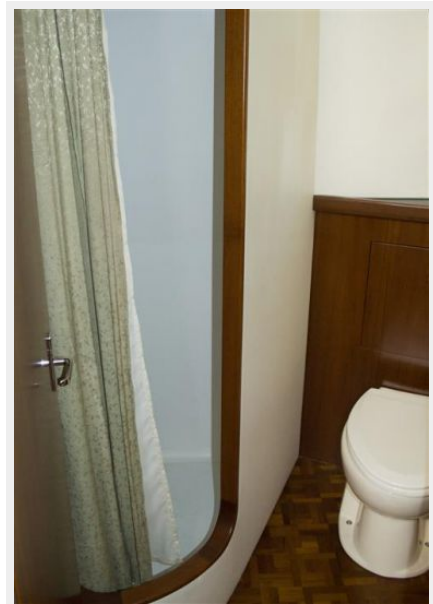


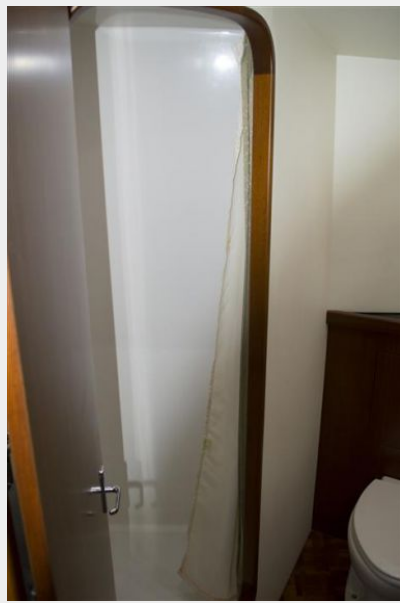


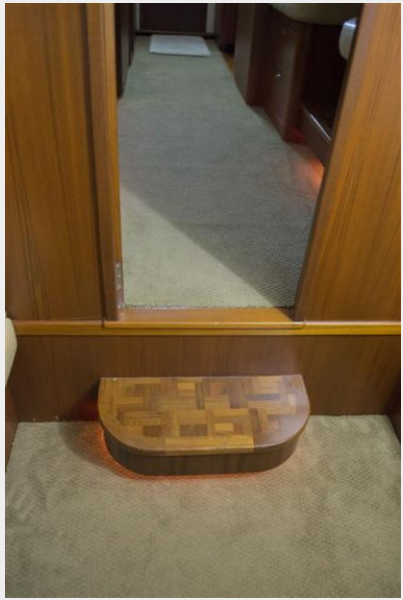
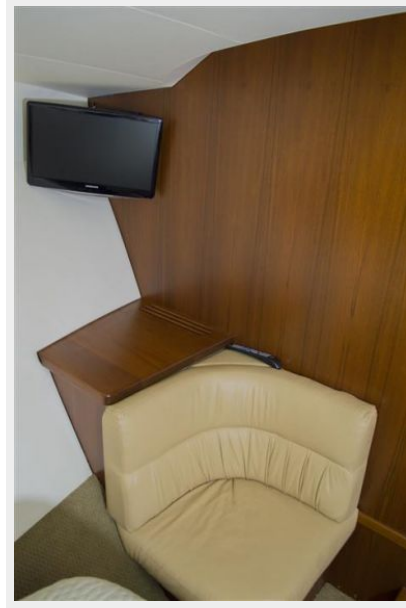
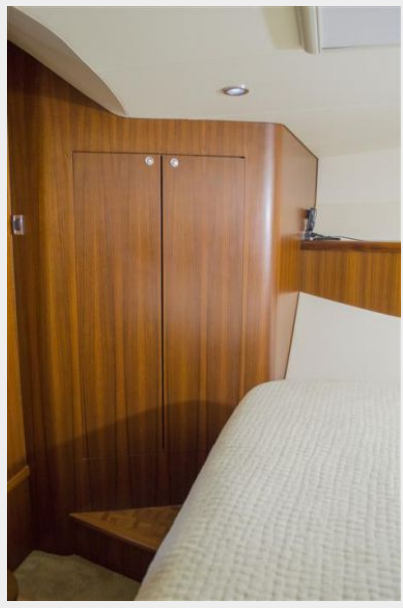




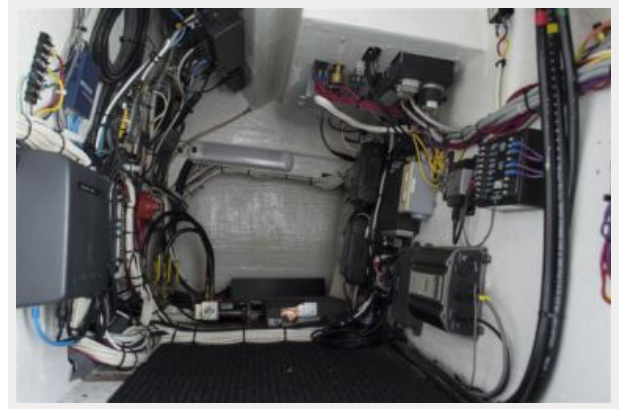












CONTACTS

Andrey Shestakov, leading yacht broker of the sales department of Shestakov Yacht Sales Inc. Shestakov Yacht Sales Inc., the official representative of the Miami/Fort Lauderdale FL headquarters.

Contact details

Email: andrey@shestakovyachtsales.com

Web: shestakovyachtsales.com/en/

Telephones

USA: +1(954)274-4435

Office hours

Monday – Saturday: **9:00 - 21:00** EDT

Sunday: **closed**

Address



Harbour Towne Marina, 850 NE 3rd St,
STE 213, Dania, FL 33004