

2011 PRINCESS 95 2650 HP MTU'S — PRINCESS YACHTS



Судостроитель: PRINCESS YACHTS

Год постройки: 2011

Модель: Моторная яхта

Цена: ЦЕНА ЯХТЫ ПО ЗАПРОСУ

Местонахождение: United States

Длина общая: 95' 0" (28.96m)

Ширина: 23' 2" (7.06m)

Макс. осадка: 6' 0" (1.83m)

Крейс. скорость: 27 Kts. (31 MPH)

Макс. скорость: 30 Kts. (35 MPH)

Купить 2011 Princess 95 2650 HP MTU'S — PRINCESS YACHTS а также выбрать подходящую вам яхту из нашего каталога яхт вам поможет опытный яхтенный брокер Андрей Шестаков. На сегодняшний день компания Shestakov Yacht Sales Inc. имеет большое количество яхт в собственном списке продаж, а также тесно сотрудничает со всеми крупными яхтенными производителями по всему миру.

Для того чтобы купить яхту 2011 Princess 95 2650 HP MTU'S — PRINCESS YACHTS а также проконсультироваться по любому вопросу связанному с покупкой, продажей, чартером яхт позвоните по телефону **+7(918)465-66-44**.

ОГЛАВЛЕНИЕ

ОГЛАВЛЕНИЕ	2
ХАРАКТЕРИСТИКИ	5
Обзор	5
Основная информация	5
Размеры	5
Скорость, вместимость и масса	5
Размещение	6
Корпус и палуба	6
Информация о двигателе	6
ПОДРОБНОЕ ОПИСАНИЕ	7
Main Deck Salon/ Dining Area	7
Day Head	7
Lower Helm	8
Galley	9
Master Stateroom & Head	9
Fabric Covered Panels	10
Companion Way Forward of Master Stateroom	10
Port Guest Stateroom	10
Starboard Guest Stateroom	10
VIP Guest Cabin Forward	11
Fly Bridge Electronics	11
Aft Deck	12
Upper Deck	12
Crew Quarters	12
Engine Room	13
Deck and Hull Equipment	13
Disclaimer	13
Исключения	14

Отказ от ответственности	14
ФОТОГРАФИИ	15
Bow View	15
Starboard View	15
Aft View	15
Bow	15
Sidewalk	16
Bow Sunpads	16
Flybridge	16
Flybridge	16
Flybridge	17
Flybridge	17
Flybridge Helm	17
Flybridge	17
Flybridge	17
Swim Platform	17
Aft Deck Stairs	18
Aft Deck	18
Aft Deck	18
VIP	18
VIP	19
VIP	19
VIP Head	19
Twin Guest	19
Twin Guest Head	20
Twin Guest	20
Master	20
Master	20
Master Head	21

Master Vanity	21
Master Head	21
Pilothouse	21
Pilothouse	22
Pilothouse	22
Pilothouse Dinette	22
Galley	22
Day Head	23
Galley	23
Salon	23
Salon	23
Salon	23
Dining	23
Stairs to FB	24
Engine Room	24
Engine Room	24
Profile	24
Port View	24
КОНТАКТЫ	25
Контактная информация	25
Телефоны	25
Время работы	25
Адрес	25

ХАРАКТЕРИСТИКИ

Обзор

The only 95 Princess with 2650 HP MTU's now available (30 knots).

- Worldwide power with ASEA professional transformers and glendenning cablemasters.
- Flawless, preferred, high gloss walnut wood interior
- TRAC zero-speed stabilizers
- Hardtop + opening sunroof
- Low hours on MTU 2000 M94 2650 HP engines
- Many other upgrades and options
- Call Dean for details!
- NOT FOR SALE TO US RESIDENTS WHILE IN US WATERS

Основная информация

Тип судна: Моторная яхта

Модельный год: 2011

Год постройки: 2011

Страна: United States

Размеры

Длина общая: 95' 0" (28.96m)

Ширина: 23' 2" (7.06m)

Макс. осадка: 6' 0" (1.83m)

Длина привального бруса: 95' 0"
(28.96m)

Скорость, вместимость и масса

Крейс. скорость: 27 Kts. (31 MPH)

Макс. скорость: 30 Kts. (35 MPH)

Вместимость воды: 252 Gallons

Объем топливного бака: 2421 Gallons

Размещение

Всего кают: 4

Спальные места: 8

Всего ком. состава: 4

Каюта капитана: Да

Каюты экипажа: 2

Койки экипажа: 4

Комм. состав экипажа: 1

Корпус и палуба

Материал корпуса: Fiberglass

Информация о двигателе

Двигатели: 2

Производитель: MTU

Модель: 16V 2000 M94

Тип двигателя: Inboard

Тип топлива: Diesel

ПОДРОБНОЕ ОПИСАНИЕ

Main Deck Salon/ Dining Area

Upon entering the saloon through a large floor to ceiling, stainless steel framed glass door, you are greeted with a huge, spacious, saloon that feels like you are in a much larger yacht.

- Rich, high gloss walnut interior woods
- Decor fabrics (Luxury paneling)
- 14' x 9' U-shaped sofa
- 51" x 41" high gloss coffee table with black pattern insert
- Cruisair A/C control
- 31 overhead lights
- Kawi ES7 digital piano w/ custom L-shaped alligator pattern inlay and small black bench seat
- 6 large windows to port and starboard
- Adjustable blinds
- Roman style silk curtains on all salon windows
- Chilled water air conditioning via slatted valence on both port and starboard, walnut wood
- Coffered overhead with walnut wood frame and indirect lighting in saloon and dining areas
- **Salon entertainment system:**
- Onkyo Amplifier/ Receiver
- 5 speaker surround sound system
- Kawai E-S7 electric piano
- Sonos 4 zone controls with wireless bluetooth controls via I-Phone or I-Pad
- Apple TV
- Sony Blue Ray player- New 2013
- DSS SAT Receivers for saloon, aft deck, and flybridge TV's
- Rich wood walkway forward
- **Dining:**
- The open elegant area is just forward of the saloon and features:
- Abundant 5 drawer deep and standard drawers with locking chrome plated hardware. They all auto-close.
- 2 U-Line refrigerators with custom built in wine bottle storage racks.
- Beautiful high-gloss wood top dining table with 8 chairs
- 4 door cabinet storage with flatware storage and eating utensils for 10
- Large beveled mirror
- 2 custom wall sconces
- Rich black leather wall feature
- Additional U-line wine chiller for 25 bottles

Day Head

Just forward of the saloon/dining area and starboard is the Day head and features.

- Villeroy and Boch ceramic basin w/ Samuel Heath chrome plated fixture
- High-gloss walnut cabinet with a marble top and 8" back splash
- Marble floors
- Vinyl covered wall and ceiling panels
- Large window w/ OceanAll shade
- 42" fitted mirror
- Vacuflush head
- Sliding pocket door with chrome plated, leather handle.

Lower Helm

- AA560 Lewmar remote anchor windlass control pads
- ACR Spotlight
- ABT Hydraulic bow and stern thruster controls
- 5x camera control pads
- Furuno Nav Pilot Autopilot
- Furuno 700 Navnet
- Navigation alert system
- 2x Furuno 15in. color displays
- 2x Furuno F150 depth, speed, wind
- Rudder angle indicator heading, sea water temp
- 2x MTU digital displays (Blue line)
- Note- MTU engines have upgraded blue line upgrade monitor system
- ABT Trac O Speed Stabilizers
- Furuno GP32 Display GPS/ WAAS
- Furuno F150 wind, speed/ direction indicator
- Fusion MS-AV 700I AM/FM/CD stereo w/ Bluetooth
- 15" Computer monitor
- Plastimo compass
- MTU electronic controls
- IRIS night vision camera- New 2013
- Standard Horizon VHF Radio
- 2x Leather helm chairs w/ foot rest & electronic controls
- Panasonic KX intercom phone system
- Chart table
- U shaped settee w/ rich leather cushions, teak table w/ leather wrapped pedestal and bar stools
- Chart table with 2 drawers for storage
- Ships monitoring system
- Book shelf
- Cruisair water logic control panel

- Cruisair digital display with speakers
- Rich wood floors

Galley

- Emperador catel- marble tops w/ backsplash
- Duel stainless steel sinks with garbage disposal
- Trash bin
- Miele dishwasher
- Miele microwave/ oven
- Abundant drawer and cabinet storage
- Elica cooktop, light and exhaust fan
- Subzero stainless steel refrigerator w/ 2 lower drawers for storage. Drawers have wood faces & stainless steel handles.
- Smoked green glass with high gloss walnut wood frame with 3 sided wall
- Pocket door

Master Stateroom & Head

- Book matched high gloss walnut paneling
- Teak door with chrome hardware and hand stitched storage, and (2) LED reading lights to starboard and to port
- (2) Gentleman vanity desk with leather tops, drawer storage, and (2) LED reading lights to starboard and to port
- (2) Large picture windows to port and starboard with wood blinds
- (2) Black large chairs
- 46" Samsung TV framed with black leather panel
- (2) Night stands with (3) drawers
- Pedestal king size bed with leather panel drawers
- (2) Reading fixtures
- Walk in closet
- **Master Bathroom:**
- Full sized tub with water jets marble back splash and mosaic trim
- Large window with opening port hole
- (4) Stainless steel towel racks
- Large shower with teak grated sole
- Large shower stall with bronze and chocolate mosaic walls
- Marble top cabinet with multiple drawers with chrome plated hardware
- Duel Villeroy and Boch ceramic sinks with chrome Samuel Heath fixtures
- Vacuflush 4809 head
- Matching bidet
- Heated towel rack

- Emperador cafe marble

Fabric Covered Panels

- (2) Opening port holes
- (2) End Tables
- (2) Light Controls
- (2) Bronze and chrome lamps

Companion Way Forward of Master Stateroom

- Bosh combo washer/dryer
- (4) Storage Lockers

Port Guest Stateroom

- **Port Guest Stateroom:**
- Port with drawer storage
- Queen sized walk around bed with storage
- Large hanging locker
- Samsung 30" flats creen TV sits behind a motorized, mirrored panel
- Just below is the vanity with mirror
- **Port Guest Head:**
- Cabinet with Villeroy and Boch ceramic sink
- Samuel Heath Chrome faucet
- Large stall shower with bronze mosaic and teak bench seat
- Heated towel rack
- 3 Fold mirror
- Vacuflush head
- Opening port hole in stall shower

Starboard Guest Stateroom

- **Starboard Guest Stateroom:**
- Twin berths with storage
- Nightstand with drawer
- (2) Bronze and chrome lamps
- (3) Fabric covered panels

- Samsung TV
- Black leather covered trim
- Large hanging locker
- Chest of drawers
- Mirrored cabinet
- **Starboard Guest Head:**
- Wood cabinet with Emperador Cafe counter tops and back splash
- (2) Mirrored medicine cabinets doors
- Large stall shower with bronze mosaic tile and teak bench seat
- Vacuflush head
- Chocolate and marshmallow floor

VIP Guest Cabin Forward

- King sized bed with large storage drawers
- Cozy couch
- Desk with vanity mirror drawer storage
- (2) Bronze and chrome lamps
- (4) Silk covered wall panels
- Samsung TV
- Chest of drawers
- **VIP Guest Head:**
- Cherry wood cabinet with Emperador marble counter top and back splash
- Villeroy and Boch ceramic sink
- Samuel Heath chrome fixture
- 3 Panel mirror
- Large stall shower with bronze mosaic
- Tile and glass door with polished chrome hardware
- Vacuflush head
- Bidet
- Heated towel rack
- Marble floor - Avonite

Fly Bridge Electronics

- (2) Furuno Nauvet 3D color 12" Units
- Standard Horizon VHF Radio
- (2) Lewmar anchor controls
- Plastimo 4" compass
- MTU electronic gear / throttle controls
- Bennett Trim tab controls
- ALR search light

- Iris night vision camera
- (2) Furuno F150 multi displays (same as lower helm)
- Furuno F150 wind speed angle display
- Furuno autopilot
- ABT trac bow and stern
- Hydraulic thrusters
- Rudder angle indicator
- VDO engine and transmission gauges

Aft Deck

- Large U- Shaped seating area with teak table
- Drink box with pull out drawer
- Stereo System
- Bar with glass and bottle storage
- Teak top
- (2) Bar stools
- Water mister system
- Samsung flat screen TV
- AFT control station with bow and stern thruster and throttle controls

Upper Deck

- L-Shaped settee
- Large U Shaped settee with teak table
- 9' bar with 3 bar stools
- (2) electric grills
- Avonite counter top with stainless steel sink and faucet
- Uline ice maker
- Bottle and glass storage
- Large refrigerator drink box
- 50" Flat screen TV
- Upper deck is that of a 120" yacht
- Large custom lounge
- (2) Fabric covered helms chairs with foot rest adjustable
- Dual anchors with (2) Lofrane forward seating
- Huge motorized sun roof
- Forward seating cover
- Forward lounge area with adjustable back rests

Crew Quarters

- (2) SRS
- Captain Cabin
- Full size bed
- Hanging locker
- Drawer storage
- Reading lights
- Samsung TV
- (3) Drawer storage
- Head stall shower
- **Crew Cabin:**
- (2) Upper and lower bunks
- Mile separate washer / dryer
- Mile stovetops
- Panasonic microwave
- Stainless steel sink
- L - Shaped dining area with teak table
- Mile oven

Engine Room

- (2) 40 KW Cummins Onan gensets
- (2) Duel Racor fuel filters
- MTU blue line electronic control panels
- (3) Cruise air chillers
- Stainless steel tubing on cell fuel lines
- High volume intake and exhaust fans

Deck and Hull Equipment

- (2) Lewmar windless AFT
- Bensenzoni Passerelle
- Hydraulic swim platform with jet ski
- Trunk with hydraulic door for massive storage
- (2) Anchors with Lewmar windless
- (2) Chrome sink near windless on aft deck for hand washing port and starboard
- Boarding gates port and starboard

Disclaimer

NOT FOR SALE TO US RESIDENTS WHILE IN US WATERS

Исключения

При продаже яхты исключаются личные вещи владельца.

Отказ от ответственности

Компания предоставляет описание судна или яхты добросовестно, но не может гарантировать точность этой информации, а также не ручается за техническое состояние. Покупатель должен проинструктировать своих агентов или оценщиков исследовать представленную информацию более подробно, по собственному желанию. Продажа судна или яхты, изменение цены или снятие с продажи будет происходить без предварительного уведомления.

ФОТОГРАФИИ

Bow View



Starboard View



Aft View



Bow



Bow Sunpads



Sidewalk



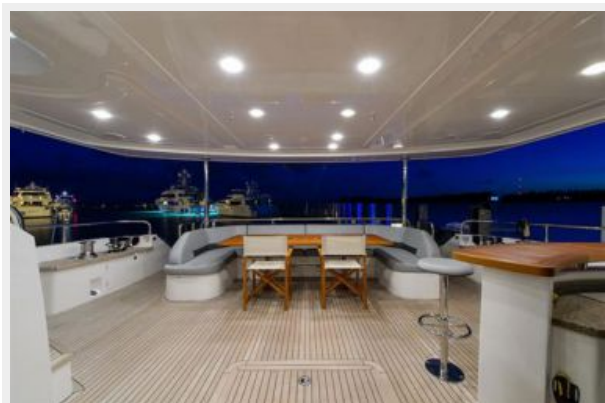
Flybridge



Flybridge



Flybridge



Flybridge



Flybridge Helm



Flybridge



Flybridge



Swim Platform



Aft Deck



Aft Deck Stairs



Aft Deck



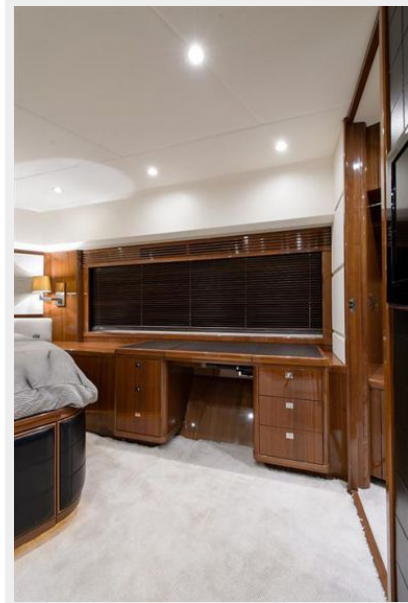
VIP



VIP



VIP



VIP Head



Twin Guest



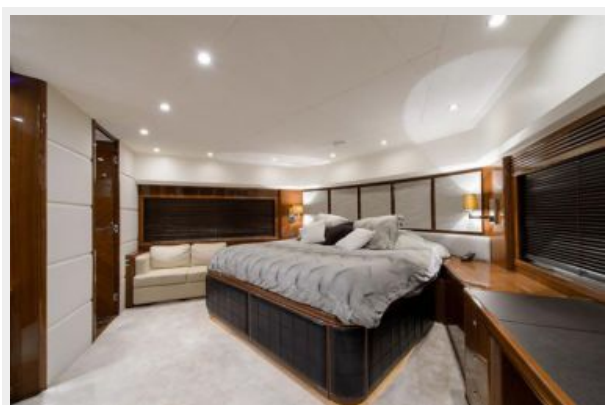
Twin Guest



Twin Guest Head



Master



Master



Master Vanity



Master Head



Master Head



Pilothouse



Pilothouse



Pilothouse



Pilothouse Dinette



Galley



Galley



Day Head



Salon



Salon



Salon



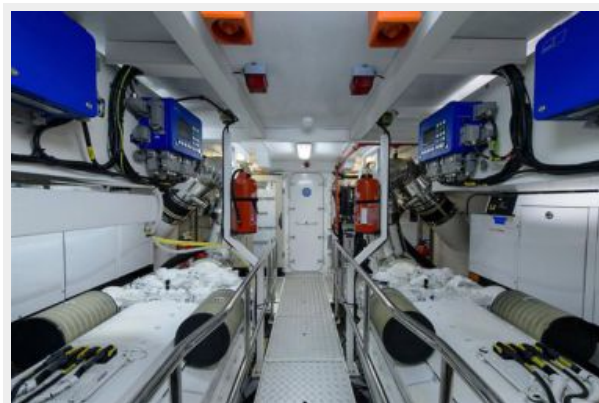
Dining



Stairs to FB



Engine Room



Engine Room



Profile



Port View



КОНТАКТЫ

Андрей Шестаков (Andrey Shestakov) – ведущий яхтенный брокер отдела продаж яхт и судов компании Shestakov Yacht Sales Inc. Официальный представитель Shestakov Yacht Sales Inc. для русскоговорящих клиентов в центральном офисе компании в Майами/Форт Лодердейл/Флорида/США.

Контактная информация

Email: andrey@shestakovyachtsales.com

Web: shestakovyachtsales.com

Телефоны

Краснодарский край: **+7(918)465-66-44**

США, Майами, Флорида: **+1(954)274-4435**

Время работы

Понедельник – Суббота: **9:00 - 21:00**
EDT

Воскресенье: **Закрито**

Адрес



Harbour Towne Marina, 850 NE 3rd St,
STE 213, Dania, FL 33004