

## LIBERTY — UNIESSE



**Builder:** UNIESSE

**Year Built:** 2002

**Model:** Motor Yacht

**Price:** PRICE ON APPLICATION

**Location:** United States

**LOA:** 55' 0" (16.76m)

**Beam:** 16' 1" (4.90m)

**Max Draft:** 5' 1" (1.55m)

Our experienced yacht broker, Andrey Shestakov, will help you choose and buy a yacht that best suits your needs **Liberty — UNIESSE** from our catalogue. Presently, at Shestakov Yacht Sales Inc., we have a wide variety of yachts available on our sale's list. We also work in close contact with all the big yacht manufacturers from all over the world.

If you would like to buy a yacht **Liberty — UNIESSE** or would like help answering any questions concerning purchasing, selling or chartering a yacht, please call **+1(954)274-4435**

# TABLE OF CONTENTS

TABLE OF CONTENTS	2
SPECIFICATIONS	5
Basic Information	5
Dimensions	5
Speed, Capacities and Weight	5
Accommodations	5
Hull and Deck Information	5
Engine Information	6
DETAILED INFORMATION	7
Walkthrough and Accommodations	7
Exclusions	13
Exclusions	13
Disclaimer	13
PHOTOS	14
Profile - Main	14
Bow	14
Bow Anchor	14
Bow Port	14
Radar Arch	14
Flybridge Aft View	14
Flybridge Forward	15
Flybridge Helm	15
Flybridge Helm	15
Flybridge Helm	15
Flybridge Grill and Wet Bar	15
Flybridge Seating	15
Aft Deck	16
Aft Deck	16

Port Walkaround	16
Aft Deck	16
Aft Deck	16
Stern Swim Platform	16
Lower Helm	17
Stern	17
Lower Helm	17
Helm and Dinette	17
Dinette	17
Galley	17
Galley	18
Galley	18
Guest Berth	18
Salon Port with Sunken Galley	18
Guest Berth	18
Salon Lower Level Starboard	18
Salon Looking Forward	19
Salon Starboard Side	19
Salon Forward	19
Salon Looking Aft	19
Master Berth	19
Master Berth	19
Master Port	20
Master Starboard	20
Master Head	20
Master Head	20
VIP Stateroom King and Bunk	21
VIP Stateroom w King and Bunk	21
VIP Head	21

---

VIP Head	21
VIP Shower	22
Crew Quarters Aft Storage	22
Engine Room Port	22
Engine Room Aft	22
Engine Port	22
Engine Room Starboard Aft	22
Lazarette Port	23
Lazarette Starboard	23
Lazarette Aft Bilge	23
Engine Starboard	23
Engine Room	23
CONTACTS	24
Contact details	24
Telephones	24
Office hours	24
Address	24

---

# SPECIFICATIONS

---

## Basic Information

---

**Category:** Motor Yacht

**Model Year:** 2003

**Year Built:** 2002

**Country:** United States

## Dimensions

---

**LOA:** 55' 0" (16.76m)

**Beam:** 16' 1" (4.90m)

**Max Draft:** 5' 1" (1.55m)

## Speed, Capacities and Weight

---

**Displacement:** 66500 Pounds

**Water Capacity:** 187 Gallons

**Fuel Capacity:** 647 Gallons

## Accommodations

---

**Total Cabins:** 3

**Total Heads:** 3

**Crew Cabin:** 1

**Crew Heads:** 1

## Hull and Deck Information

---

**Hull Material:** Fiberglass

---

## Engine Information

---

**Engines:** 2

**Manufacturer:** MAN

**Model:** D284LE403

**Engine Type:** Inboard

**Fuel Type:** Diesel

---

# DETAILED INFORMATION

---

---

## Walkthrough and Accommodations

---

### Introduction

Uniesse is a custom and semi custom Italian Yacht manufacturer. For those seeking a step up in build quality, engineering, fit, finish and ride over the mass produced Italian built motor yachts, than the 55' "Liberty" is for you. She was custom built by her current and original owner. She is well traveled up and down the eastern sea board and throughout the Bahamas. Her size combined with good sight lines and walk around side decks make her easily handled by two people. Her interior layout is highly customized and features an enlarged master stateroom and enlarged master head for maximum enjoyment by her owners. Below please find a detailed description of her interior arrangement along with equipment, features and highlights.

### Walkthrough

"Liberty" can be easily boarded by her large swim platform with aft deck accessibility via port or stbd stairs with small safety gates. The swim platform is large enough to carry a tender and has a custom upgraded 650lb Opac Mare Passerelle that will also double as a davit if needed. Both the swim platform and aft deck have new painted non-skid decks 11/14. On either side of the vessel aft deck, neatly concealed under cover are Capstan warping winches for heavy duty Med style tie up or to provide the extra leverage needed sometimes to lock lines down super tight.

The aft deck is spacious and has molded seating with direct access to the main salon or up the molded stairs to the flybridge. Full walk around side decks allow for easy line handling, fender placement and bow access. Entering the main salon you are instantly struck by her beautiful high gloss light wood. Comfortable U shaped seating area is immediately to stbd. Across from that on the port side is the TV, high gloss cabinetry and other great features including.....

- 4 zone Bose surround sound and AV system w I pod docking station
- Beverage refrigerator
- Ice maker
- Hunter Douglas blinds
- Climate controls
- Custom sculpted carpet

Port fwd and socially incorporated in the salon area is a sunken galley. It features everything a ship board gourmet would require including.....

- Ample storage

- AC DC Vitrifrigo refrigerator
- Vitrifrigo Freezer
- Whirlpool combo washer/ dryer
- Kitchen aid microwave
- Kenyon 3 burner electric cook top
- Teak floor
- Granite countertop
- Stainless steel sink
- Single lever faucet for fresh water

One of the CUSTOM features “Liberty” was built with was a single berth guest or crew stateroom directly adjacent to and accessed from the galley.

- Single berth
- Shower and sink with curtain
- Climate controls
- Overhead lighting
- Carpet

Moving back up to the main deck level as we look fwd from the salon seating area there is a set of stairs leading up to the flybridge to add a second interior way to go topside. This main level is open and social. Stbd side fwd is a large comfortable U shaped dinette with a high gloss finished table. Large windows and natural light if desired keep this deck open and airy feeling. Across from the dinette is the lower helm station. It is fully equipped navigation station complete with.....

- Electronic engine controls
- Analogue engine gauges
- Raymarine GPS/Chartplotter/ Radar
- Raymarine Auot pilot
- Raymarine depth sounder
- Electric helm seat



- Richie compass
- Trim tab controls
- BOW AND STERN THRUSTER
- NEW Icom M504 Vhf radio
- RL- 100 point pad search light controls
- Hydraulic steering w / new servo
- Anchor windlass controls
- Horn
- NAV lights
- Windshield wiper controls
- Bilge alarms
- Water tank gauge

Continuing fwd on the vessel we will walk down a flight of stairs to the lower accommodations. To stbd we will find the VIP Stateroom which was custom configured for maximum versatility. She has the option of three individual berths, 2 side by side and one bunk stbd side outboard. The owners built a drop in section to bridge the two single berths into a large king size berth with custom Temperpedic mattress while still preserving the outboard bunk bed. It is suitable for a couple, couple with a child, or even a bunch of grandchildren. There is also a flat screen TV hanging on the wall hooked up to Satellite. The VIP has an adjoining head with full shower and all of the creature comforts for ship board guests.

The custom master stateroom arrangement all the way fwd in the vessel was built much larger than the standard master. Huge space to move around the bed with a seating area to port was added. There is a sit down vanity on the stbd side aft. Closet space and storage added everywhere. Highlights include.....

- Island Queen berth with custom Temperpedic mattress
- Bedside lockers and storage
- Bookshelves, port and stbd hanging lockers and under bed storage
- L shaped seating area to port
- Vanity to starboard

- Adjustable SHARP flat screen TV w Satellite service
- Custom sculpted carpet
- Port holes for light and air
- Head board reading lamps
- Climate controls

The master head is en suite and much larger than standard layout as well. It features.....

- Custom marble sole
- Granite countertop with porcelain sink
- Custom Jacuzzi bathtub w shower

Heading back up top and outside we find our way via the aft deck molded stairs or interior stairs to the Flybridge area. This is such a great place to relax in the sun at anchor, entertain, or enjoy the vessel underway with the wind in your hair. This area also has custom features and highlights that include.....

- Full navigation station with Dual Raymarine units for safety and redundancy
- Custom dual Pompanette platinum series seats at helm station in lieu of standard molded bench and cushion
- All exterior cushions and upholstery new 2014
- U shaped seating with adjustable fiberglass table
- Sun pad area
- Wet bar/ electric grill/ sink/fridge
- Radar arch with antennas, radar and SAT domes
- Canvas covers for helm and chairs
- Bimini top for sun relief
- Storage lockers

The engine room is accessible from an oversized hatch in the aft deck sole. She is well engineered and the layout is very service and maintenance friendly. The gen set is located all the way against the aft bulkhead. Saddle style fuel tanks are aft and outboard also with sight glass tubes to read levels. Sea strainers and fuel filters are easily accessed for efficient changing. Scott Marine Power has been the only diesel engine repair company to ever work on

the vessel!! Other features include.....

- Twin MAN 800 hp diesel engines model D2848LE403 with only 910 original hours 11/14
- Twin disc marine transmissions
- Primary and secondary fuel filtration
- Emergency fuel shut offs
- Stainless exhaust for mains
- Kohler 20 KW generator with only 1452 original hours
- Updated 24V 80A Dolphin battery charger (2012)

Last but not least there is access to crew quarters, currently used as storage quarters under the aft deck seating area. This area will also lead us to the lazarette and steerage compartment. The crew area consists of.....

- Single berth
- Head
- Shower
- Sink
- Hanging locker
- Climate controls
- Porthole for light and fresh air

### **Hull, deck and misc. equipment**

- Fresh awlgrip flag blue hull paint in 2012
- Fresh painted non skid on swim platform and aft deck 11/14
- Upgraded Opac mare 650 lb. Passerelle/davit
- Upgraded 80lb. Delta anchor with 225' of chain
- 50 A shore power cord Glendenning power coil
- Swim platform FW shower
- Hinged SS swim laddered

- 6 peson Switlik MD 2 life raft

MAINTENANCE HISTORY Replaced oil sensor switch on starboard engine 2006

Adjust starboard idol port engine 2006

400 hr.service done(ScottMarine) 2006

New Turbo port engine left bank 2007

Replaced ZF controls lower helm 2007

Antifoul hull (micron66) 2007

462 hrs.one year oils/filters change,2007

543 hrs.one year oils /filters change 2008

New gel batteries (5) 2008

609 hrs. one year oils/filters change 2009

Antifoul hull(micron66)2009

655 hrs.one year oils/filters change 2010

New chiller water a/c unit 2010

Replaced salt water intake motor/pump 2010

Stern thruster drive leg replaced (Yacht Aid LLC) 2010

New KN washable air filters installed 2010

New water pump converted to usa 2010

714 hrs .oneyear oils/filters change2011

Antifoul hull (Micron 66) 2011

767 hrs.one year oils/filters change 2012

767 hrs. adjusted valves/checked inter coolers and torqed down heads

New servo steering unit & hoses 2012

New Dolphin battery charger 2012

New batteries (5)installed 2012

New stainless risers installed 2012

Blue hull repainted( awlgrip flag blue) 2012

Antifoul hull (micron 66) 2013

New engine room insulation installed 2013

Rebuilt both gps bridge units (Raymarine) 2013

New(2) ICOM VHF radios/antenna 2013

845 hrs. one year oils/filters change 2013

Anti foul bottom two coats (micron66) Sept.2014

## **Exclusions**

---

Owner's tools and personal effects are excluded from the deal.

## **Exclusions**

---

Owner's personal belongings.

## **Disclaimer**

---

The Company offers the details of this vessel or yacht in good faith but cannot guarantee or warrant the accuracy of this information nor warrant the condition of the vessel. A buyer should instruct his representatives, agents, or his surveyors, to investigate such details as the buyer desires validated. This vessel or yacht is offered subject to prior sale, price change, or withdrawal without notice.

# PHOTOS

**Profile - Main**



**Bow**



**Bow Anchor**



**Bow Port**



**Radar Arch**



**Flybridge Aft View**





**Flybridge Forward**



**Flybridge Helm**



**Flybridge Helm**



**Flybridge Helm**



**Flybridge Grill and Wet Bar**



**Flybridge Seating**



**Aft Deck**



**Aft Deck**



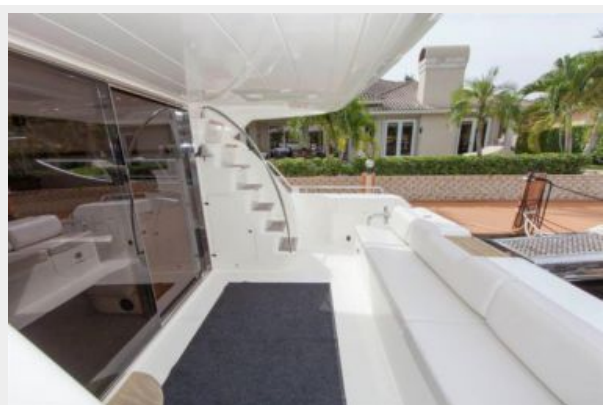
**Port Walkaround**



**Aft Deck**



**Aft Deck**



**Stern Swim Platform**





**Stern**



**Lower Helm**



**Lower Helm**



**Helm and Dinette**



**Dinette**



**Galley**



**Galley**



**Galley**



**Guest Berth**

**Salon Port with Sunken Galley**



**Guest Berth**



**Salon Lower Level Starboard**





**Salon Looking Forward**



**Salon Starboard Side**



**Salon Forward**



**Salon Looking Aft**



**Master Berth**



**Master Berth**



**Master Port**



**Master Starboard**



**Master Head**



**Master Head**



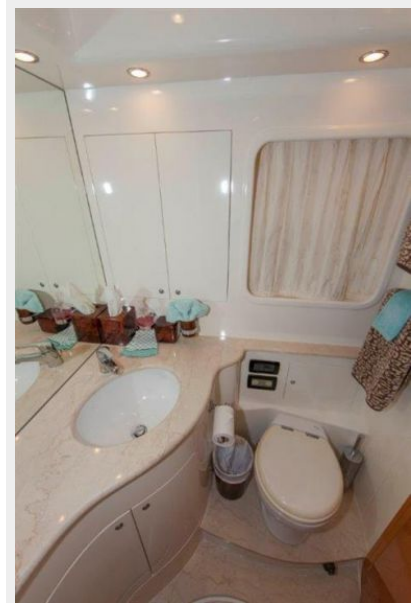
## VIP Stateroom King and Bunk

### VIP Stateroom w King and Bunk



### VIP Head

### VIP Head





**VIP Shower**



**Crew Quarters Aft Storage**



**Engine Room Port**



**Engine Room Aft**



**Engine Port**



**Engine Room Starboard Aft**



**Lazarette Port**



**Lazarette Starboard**



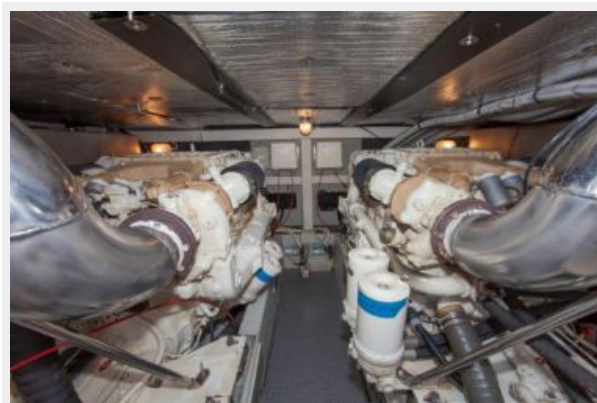
**Lazarette Aft Bilge**



**Engine Starboard**



**Engine Room**



# CONTACTS

---

Andrey Shestakov, leading yacht broker of the sales department of Shestakov Yacht Sales Inc. Shestakov Yacht Sales Inc., the official representative of the Miami/Fort Lauderdale FL headquarters.

## Contact details

---

Email: [andrey@shestakovyachtsales.com](mailto:andrey@shestakovyachtsales.com)

Web: [shestakovyachtsales.com/en/](http://shestakovyachtsales.com/en/)

## Telephones

---

USA: +1(954)274-4435

## Office hours

---

Monday – Saturday: **9:00 - 21:00** EDT

Sunday: **closed**

## Address

---



Harbour Towne Marina, 850 NE 3rd St,  
STE 213, Dania, FL 33004