

## RAMPAGE — OCEAN ALEXANDER



**Судостроитель:** OCEAN ALEXANDER

**Год постройки:** 1997

**Модель:** Моторная яхта

**Цена:** ЦЕНА ЯХТЫ ПО ЗАПРОСУ

**Местонахождение:** United States

**Длина общая:** 61' 0" (18.59m)

**Ширина:** 17' 6" (5.33m)

**Макс. осадка:** 5' 0" (1.52m)

**Крейс. скорость:** 18 Kts. (21 MPH)

**Макс. скорость:** 22 Kts. (25 MPH)

Купить **Rampage — OCEAN ALEXANDER** а также выбрать подходящую вам яхту из нашего каталога яхт вам поможет опытный яхтенный брокер Андрей Шестаков. На сегодняшний день компания **Shestakov Yacht Sales Inc.** имеет большое количество яхт в собственном списке продаж, а также тесно сотрудничает со всеми крупными яхтенными производителями по всему миру.

Для того чтобы купить яхту **Rampage — OCEAN ALEXANDER** а также проконсультироваться по любому вопросу связанному с покупкой, продажей, чартером яхт позвоните по телефону **+7(918)465-66-44**.

# ОГЛАВЛЕНИЕ

---

ОГЛАВЛЕНИЕ	2
ХАРАКТЕРИСТИКИ	3
Обзор	3
Основная информация	6
Размеры	6
Скорость, вместимость и масса	6
Размещение	6
Корпус и палуба	6
Информация о двигателе	6
ФОТОГРАФИИ	7
КОНТАКТЫ	18
Контактная информация	18
Телефоны	18
Время работы	18
Адрес	18

---

# ХАРАКТЕРИСТИКИ

---

## Обзор

---

**RAMPAGE** is an absolutely gorgeous captain maintained vessel and a very proper yacht. Designed, outfitted and equipped for serious coastal cruising, she's prepared for Mexico today or SE Alaska early next spring. This bristol ship has enjoyed many exceedingly nice upgrades over the past few years. Her price reflects the true character and value of this exquisite yacht. Plan to see her soon. She won't be on the market long.

### Accommodations

**Rampage** shows her exceptional care and thoughtful equipment inventory throughout the vessel. Upon entering the salon, one is immediately captivated by the openness, the welcoming and comfortable arrangement and the amount of light flooding into the interior area. The galley and pilothouse areas are open to the salon for a full 360 degree view around the vessel.

Going forward from the pilothouse, the accommodation areas are accessed by a gradual and carpeted staircase. The VIP cabin is forward with a private entrance to the day/guest head and shower area. The port guest stateroom features large over/under berths, with plenty of floor space and abundant locker and drawer storage. The master cabin is a full beam mid-cabin arrangement. The en-suite head/shower area has good lighting and open ventilation. Again, lots of hanging locker and drawer storage spaces. The utility room is accessed from the master cabin and features a new (2014) Bosch washer and dryer set. There is a folding table above the laundry machines to port and a service bench opposite to starboard.

- Dometic 8900 series toilets with macerators (**new 2012**)
- Carpeting, salon upholstery and drapes (**recently**)
- Salon hi/low dining and cocktail table can seat up to six +.
- Salon L-settee will convert into 2 ea. single berths.
- Entertainment center in salon featuring DVD BluRay, flat screen TV, iPod connection and surround sound system.
- SAT TV
- Front loading Bosch washer and dryer (**new 2014**)
- Electric space heaters
- Reverse cycle air conditioning

### Galley

- Granite counter top surfaces
- 2 ea. under counter Sub-Zero refer units (**new 2011**)
- Kenyon 3 burner glass cook top
- LG microwave/convection oven

- Jenn Air oven
- Whirlpool dishwasher (**new 2011**)
- Franke double SS sink
- Grohe fixture

## Electronics

### LOWER HELM

- Furuno 92 mile radar (**new 2012**)
- KEP plotter screen (**new 2012**)
- Robertson 300 SX autopilot w/remote
- Furuno color sounder
- SEA156 VHF
- SEA235 SSB
- Nav computer w/charting
- B&G digital sounder
- Ritchie compassIntercom system
- SAT telephone/cell phone
- Auto whistle control
- Intercom

## Electrical

- Onan 20 kW generator (8829 hrs)
- Panda 12 kW generator (2600 hrs)
- Trace 3.0 kW inverter (will run boat for 10 hrs without gen set or shore power)
- AGM inverter/house batteries
- Link 10 battery condition indicator
- House battery parallel system
- 50 amp shore service from 2 ea. locations (starboard transom plus both port and starboard sides forward)
- LED underwater lights at the transom
- Wesmar 24 V bow thruster
- 110 V AC lazarette freezer (new 2013)

## Deck

- Cockpit docking station w/thruster, clutches, throttles and steering.
- Teak cockpit decking
- Teak transom step decking
- Teak toe and cap rail system with weather covers
- Exterior weather covers
- Exterior window snap on window screen system

- Transom sunshade awning
- Cockpit chairs with custom seat cushions
- Custom power actuated lazarette hatch
- 13' 9" Nouvrania RIB w/50 hp Yamaha 4 stroke ob
- 1500 lb power davit
- 8 person emergency lift raft
- FB entertainment center w/BBQ, refer, sink and ice maker.
- FB top load freezer (new 2014)
- FB L-settee
- 2 ea. FB helm chairs
- Bimini top w/sun top extension aft of the radar arch
- Outriggers (Rupp)
- 3500 lb Maxwell windlass and 380' chain rode
- Stern anchor system with rode
- Custom cockpit bait tank
- Custom cockpit tackle drawers

## Mechanical

- Naiad stabilizer system
- Trim tabs
- Inflatable raft air compressor
- Dive tank compressor
- Sea Recovery water maker (800 gpd)
- Central vacuum system
- Paragon domestic water pump system

## Disclaimer

The Company offers the details of this vessel in good faith but cannot guarantee or warrant the accuracy of this information nor warrant the condition of the vessel. A buyer should instruct his agents, or his surveyors, to investigate such details as the buyer desires validated. This vessel is offered subject to prior sale, price change, or withdrawal without notice.

Exclusions All personal property is excluded unless specifically identified and included in the sale agreement and listing specifications. Personal property refers to all items not permanently attached to the vessel including but not limited to: artwork, furnishings, and recreational or entertainment items. Advertisements, marketing materials, and/or other photography may depict the vessel with personal property, however, such personal property is excluded unless otherwise specifically included as provided herein.

## Основная информация

Тип судна: Моторная яхта

Подкатегория: Pilothouse

Модельный год: 1997

Год постройки: 1997

Страна: United States

## Размеры

Длина общая: 61' 0" (18.59m)

Ширина: 17' 6" (5.33m)

Макс. осадка: 5' 0" (1.52m)

## Скорость, вместимость и масса

Крейс. скорость: 18 Kts. (21 MPH)

Макс. скорость: 22 Kts. (25 MPH)

Водоизмещение: 65000 Pounds

Вместимость воды: 350 Gallons

Вместимость сточного бака: 80 Gallons

Объем топливного бака: 1330 Gallons

## Размещение

Всего кают: 3

## Корпус и палуба

Материал корпуса: Fiberglass

## Информация о двигателе

Двигатели: 2

Производитель: Detroit Diesel

Модель: 8V2000 DDeck

Тип топлива: Diesel

# ФОТОГРАФИИ











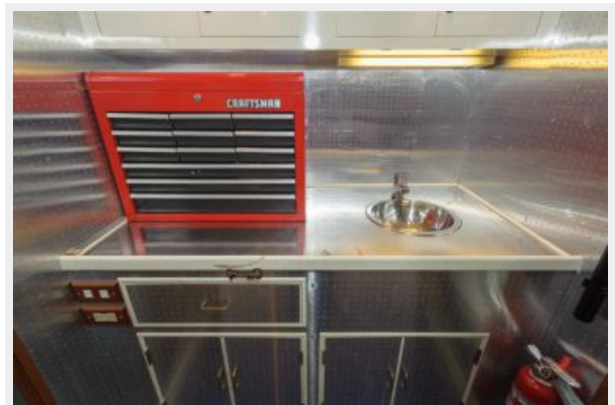


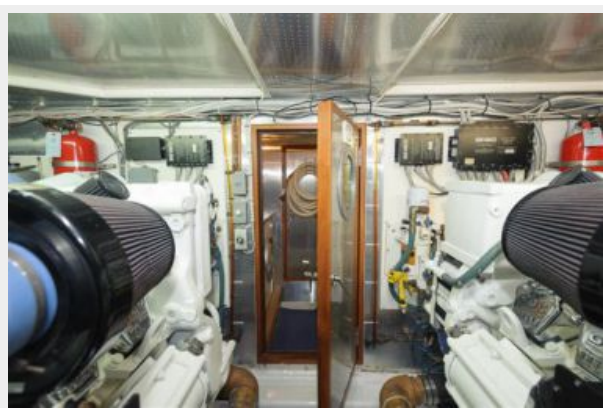






















# КОНТАКТЫ

---

Андрей Шестаков (Andrey Shestakov) – ведущий яхтенный брокер отдела продаж яхт и судов компании Shestakov Yacht Sales Inc. Официальный представитель Shestakov Yacht Sales Inc. для русскоговорящих клиентов в центральном офисе компании в Майами/Форт Лодердейл/Флорида/США.

## Контактная информация

---

Email: [andrey@shestakovyachtsales.com](mailto:andrey@shestakovyachtsales.com)

Web: [shestakovyachtsales.com](http://shestakovyachtsales.com)

## Телефоны

---

Краснодарский край: **+7(918)465-66-44**

США, Майами, Флорида: **+1(954)274-4435**

## Время работы

---

Понедельник – Суббота: **9:00 - 21:00**  
EDT

Воскресенье: **Закрето**

## Адрес

---



Harbour Towne Marina, 850 NE 3rd St,  
STE 213, Dania, FL 33004