

S'WAY IT IS — CABO



Builder: CABO

Year Built: 2006

Model: Sport Fisherman

Price: PRICE ON APPLICATION

Location: United States

LOA: 40' 0" (12.19m)

Beam: 15' 9" (4.80m)

Max Draft: 3' 6" (1.07m)

Our experienced yacht broker, Andrey Shestakov, will help you choose and buy a yacht that best suits your needs S'Way It Is — CABO from our catalogue. Presently, at Shestakov Yacht Sales Inc., we have a wide variety of yachts available on our sale's list. We also work in close contact with all the big yacht manufacturers from all over the world.

If you would like to buy a yacht S'Way It Is — CABO or would like help answering any questions concerning purchasing, selling or chartering a yacht, please call +1(954)274-4435

TABLE OF CONTENTS

TABLE OF CONTENTS	2
SPECIFICATIONS	4
Overview	4
Basic Information	4
Dimensions	4
Speed, Capacities and Weight	4
Accommodations	4
Hull and Deck Information	4
Engine Information	5
DETAILED INFORMATION	6
Galley	6
Main Cabin	6
Forward Stateroom	6
Head	6
Helm Electronics	7
Helm Console	7
Helm Deck	7
Electrical System	8
Cockpit	8
Mechanical Equipment	9
Fishing Equipment	9
Deck	10
Hull	10
Exclusions	10
Disclaimer	11
PHOTOS	12
Salon	12
Salon Storage	12

In-Floor Storage	12
Galley	12
Stateroom	12
Stateroom	12
Stateroom	13
Head	13
Head	13
Helm Electronics	13
Helm	13
Helm Seating	13
Helm Deck	14
Helm Deck	14
Cockpit	14
Tower Controls	14
Cockpit	14
Engine Room	14
Engine	15
Engine	15
Lift Storage	15
CONTACTS	16
Contact details	16
Telephones	16
Office hours	16
Address	16

SPECIFICATIONS

Overview

Basic Information

Category: Sport Fisherman

Model Year: 2007

Year Built: 2006

Country: United States

Dimensions

LOA: 40' 0" (12.19m)

Beam: 15' 9" (4.80m)

Max Draft: 3' 6" (1.07m)

Speed, Capacities and Weight

Displacement: 28000 Pounds

Water Capacity: 95 Gallons

Fuel Capacity: 550 Gallons

Accommodations

Total Cabins: 1

Hull and Deck Information

Hull Material: Fiberglass

Engine Information

Manufacturer: MAN

Model: R6-800CRM

Engine Type: Inboard

Fuel Type: Diesel

DETAILED INFORMATION

Galley

- Microwave/convection oven
- AC Duplex outlet/GFI protected
- Two-burner recessed ceramic cook top with Corian cover
- Positive latches used on cabinet doors and drawers
- Corian counter top
- Custom Side by side refrigerator/freezer, AC/DC
- Corian sea rails Storage compartments and drawers throughout
- (4) Counter top lighting - recessed halogen

Main Cabin

- AC duplex outlet / GFI protected
- Interior wood, teak, superbly joined and finished in satin varnish
- Access hatch to bilge with storage
- L-shaped lounge converts to upper and lower sleeping berths
- Air conditioning/heating, 16,000 BTU
- Lighting- recessed halogen (6)
- Designer interior
- Positive latches used on cabinet doors and drawers
- In-floor storage compartment

Forward Stateroom

- AC duplex outlet/GFI protected
- Cedar-lined hanging locker, port side
- Air conditioning/heating, 7,000 BTU
- Positive latches used on cabinet doors and drawers
- Access to anchor rope/chain locker
- Recessed halogen lights
- Double bed, island style with 5" mattress, coverlets
- Storage compartments and large drawers below bed
- Foredeck hatch with retractable shade
- Built-in 15" Flat screen TV with cable hook up
- AC
- (2) Rod storage lockers with horizontal rod racks

Head

- AC duplex outlet/GFI protected
- Positive latches used on cabinet doors and drawers
- Corian counter top Recessed halogen lighting, DC
- Custom vanity
- Separate stall shower with automatic shower sump pump
- Framed mirror
- Toiletry storage cabinet
- Corian framed with sliding mirror doors
- Sealand Vacuflush electric head

Helm Electronics

- Furuno FCV 1000L Color bottom machine
- Furuno NavNet VX2 Color chart plotter
- Furuno 64 mile 10 kW Radar
- Northstar 6100 Color chart plotter
- Icom 602 VHF Radio
- Robertson A/P 20 Autopilot
- ACR Remote spotlight
- Clarion stereo with Sat
- Full function MAN marine diesel displays
- EPIRB

Helm Console

- Canvas console cover custom switch panels
- Stainless steel helm wheel
- Fire and bilge water level alarms, audible
- Compass with light
- Flush mounted Helm console, integrally molded
- Complete custom engine instrument panel with audible Navigation and electronic panel warning system and hour meters
- Single lever electric control - console mounted

Helm Deck

- Custom outdoor helm deck carpet
- Engine access hatch with gas spring
- L-shape lounge port side with rod storage below
- (3) Premium pedestal mounted helm chairs
- Molded fiberglass helm deck, hydraulically lifted
- Sliding companionway door, opaque white acrylic panel

- Cockpit control unit
- Tackle center with drawers to store and organize gear
- Ice maker
- Man R-6 800HP A/C 24,000BTU- Helm Deck

Electrical System

- Upgraded 12.5 KW fresh water-cooled diesel generator
- Remote start and gauge panel
- Water lift muffler
- DC Engine room lights, AC lights
- Safety shut down system
- Sound enclosure
- Flat screen TV 17" in main cabin
- 50' Shore power cord with retractable Glendinning Cord
- Ground fault circuit interrupter receptacles throughout boat
- Horn, dual air trumpet
- Horn compressor- installed
- Battery charger, 50 amp
- Battery on/off switches
- Interior lighting, DC
- Bonding system
- Navigation lights, International
- Custom AC electrical distribution panel with line voltage: Stereo, DC, with AM/FM, CD, DVD, speakers in salon
- Load meter
- Reverse polarity light helm deck
- Custom DC electrical distribution panel with battery
- Telephone shore connection with one outlet, salon

Cockpit

- Aluminum reinforcing plate installed for mounting fighting chair
- Courtesy lighting under gunwales and helm deck overhang
- Bait prep center, includes sink, rigging board and tackle Hose and pistol grip nozzle supplied storage, fitted with custom lid, gas spring actuator, full Ice box, fitted with custom gasketed lid, gas spring actuator, length stainless steel piano hinge and custom latch full length stainless steel piano hinge and custom latch.
- Bait tank, 48 gallons, molded into transom with optional glass window
- Rod-gaff racks, port and starboard
- Cockpit coaming padding, high density foam, white vinyl covered
- (5) Rod holders
- Fish boxes, large capacity, insulated with macerator pumpout

- Self bailing cockpit scuppers
- Transom door with top gate
- (2) Fish boxes, one refrigerated
- Heavy duty with “O” stainless steel hardware ring seals, drains, gutters and full length, stainless steel
- Fresh water washdown
- Salt water washdown
- Speakers
- Hot cold shower

Mechanical Equipment

- (5) Bilge pumps; (4) automatic/manual and (1) automatic
- Fresh water hose bib, quick disconnect
- Bonding system with transom zinc plate
- (3) High water bilge alarms
- Braided hose sleeves on all nylon hydraulic steering lines
- Holding tank, with warning lights, macerator
- Bright white bilge and engine room
- Bronze high speed water intake scoops with integral sea strainers
- Metal braided fire-retardant fuel lines
- Oil change system, main engines, generator and transmission
- Double constant torque stainless steel clamps on all engine
- Propeller shafts, high strength stainless steel, 2.5” exhaust hoses diameter, double taper, couplers
- Double stainless steel hose clamps on all hose
- 4-Blade Nibral Propellers
- Power steering
- Electronic controls with trolling valves
- Engine synchronizer
- Rudders - High strength bronze with high-load and back up bearings insuring low friction and precise control
- Emergency bilge pump diverter valve on one engine Sea cocks, UL approved for marine application, bronze,
- Engine room blowers
- Stuffing boxes, drip less lip seal type
- Fire extinguishing system
- 11-Gallon water heater, stainless steel
- Fresh water cooling on main engines
- Prop smith pop puller

Fishing Equipment

- Rupp outriggers
- Rupp center riggers
- Transom live well with clear gloss
- (4) Rod rocket launcher with gimbal and (2) drink holders
- Refrigerated fish box
- Rigging station with sink
- Deep prop plug
- (5) Rod holders in cover board
- (6) rod holders across aft tow rail

Deck

- Aluminum bow rail
- Stainless steel stern cleats
- Stainless steel bow cleats
- Stern hawse pipes, stainless steel
- Bow pulpit
- Heavy duty DC electric for rope and chain windlass
- (3) Windshield wipers
- Windshield with side vents, heavy duty welded aluminum
- Molded-in non-skid surface construction, finished in a white polyurethane paint
- Premium quality molded-in white gelcoat finish
- Center vent in windshield
- Recessed custom stainless steel anchor roller assembly

Hull

- Navy Blue boot striping
- Molded fiberglass construction with superior ISO/NPG
- Paint, complete preparation - 2 coats epoxy, gelcoat finish and premium vinylester resins throughout
- Solid fiberglass
- Premium quality molded-in white gelcoat finish bottom construction
- Core construction from chine to sheer
- Stainless steel rub strip on face of white high density PVC rub rail
- Trim tabs, fully recessed
- Underwater lights

Exclusions

Owner's personal belongings.

Disclaimer

The Company offers the details of this vessel or yacht in good faith but cannot guarantee or warrant the accuracy of this information nor warrant the condition of the vessel. A buyer should instruct his representatives, agents, or his surveyors, to investigate such details as the buyer desires validated. This vessel or yacht is offered subject to prior sale, price change, or withdrawal without notice.

PHOTOS

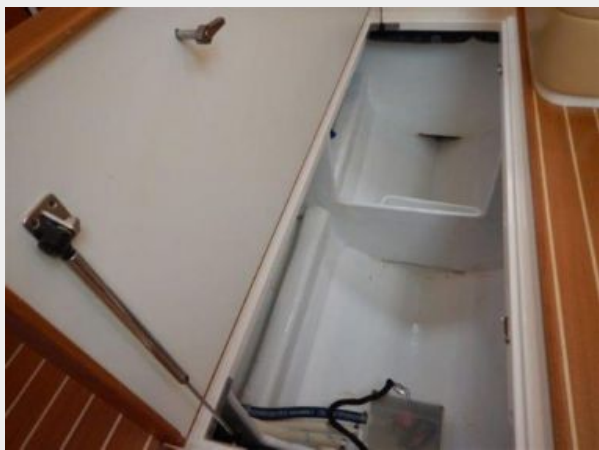
Salon



Salon Storage



In-Floor Storage



Galley



Stateroom



Stateroom



Stateroom



Head



Head



Helm Electronics



Helm



Helm Seating



Helm Deck



Helm Deck



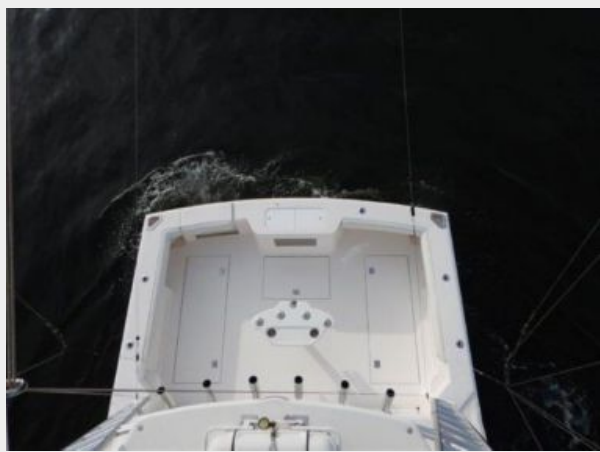
Cockpit



Tower Controls



Cockpit



Engine Room



Engine



Engine



Lift Storage



CONTACTS

Andrey Shestakov, leading yacht broker of the sales department of Shestakov Yacht Sales Inc. Shestakov Yacht Sales Inc., the official representative of the Miami/Fort Lauderdale FL headquarters.

Contact details

Email: andrey@shestakovyachtsales.com

Web: shestakovyachtsales.com/en/

Telephones

USA: +1(954)274-4435

Office hours

Monday – Saturday: **9:00 - 21:00** EDT

Sunday: **closed**

Address



Harbour Towne Marina, 850 NE 3rd St,
STE 213, Dania, FL 33004