

AZMIUT 86S — AZIMUT



Builder: [AZIMUT](#)

Year Built: 2005

Model: Motor Yacht

Price: PRICE ON APPLICATION

Location: Singapore

LOA: 65' 6" (19.96m)

Beam: 19' 1" (5.82m)

Max Draft: 4' 5" (1.35m)

Cruise Speed: 36 Kts. (41 MPH)

Max Speed: 42 Kts. (48 MPH)

Our experienced yacht broker, Andrey Shestakov, will help you choose and buy a yacht that best suits your needs **Azmiut 86S — AZIMUT** from our catalogue. Presently, at Shestakov Yacht Sales Inc., we have a wide variety of yachts available on our sale's list. We also work in close contact with all the big yacht manufacturers from all over the world.

If you would like to buy a yacht **Azmiut 86S — AZIMUT** or would like help answering any questions concerning purchasing, selling or chartering a yacht, please call **+1(954)274-4435**

TABLE OF CONTENTS

TABLE OF CONTENTS	2
SPECIFICATIONS	3
Overview	3
Basic Information	3
Dimensions	3
Speed, Capacities and Weight	3
Accommodations	4
Hull and Deck Information	4
Engine Information	4
PHOTOS	5
CONTACTS	8
Contact details	8
Telephones	8
Office hours	8
Address	8

SPECIFICATIONS

Overview

The Azimut 86S is one of the Sleekest Sports Boats ever designed. Twin 2,000 Hp MTU engines with Hamilton Jet Drives offer incredibly smooth quiet performance and maneuverability. The same combination is used on commercial fast ferries due to their efficiency and reliability. The salon's huge opening sun roof and enormous cockpit create an expansive entertaining area. The garage is larger enough to fit a 4.2m RIB and the swim platform tilts to allow easy launching. Four cabins, including a luxurious full beam master cabin, plus two small crew cabins. Upgraded LED lighting the salon. And a water maker for extended cruising.

Basic Information

Category: Motor Yacht

Model Year: 2005

Year Built: 2005

Country: Singapore

Dimensions

LOA: 65' 6" (19.96m)

Beam: 19' 1" (5.82m)

Max Draft: 4' 5" (1.35m)

Speed, Capacities and Weight

Cruise Speed: 36 Kts. (41 MPH)

Max Speed: 42 Kts. (48 MPH)

Water Capacity: 289.796741044 Gallons

Fuel Capacity: 1901.774602348 Gallons

Accommodations

Total Cabins: 4

Total Berths: 8

Sleeps: 8

Total Heads: 4

Crew Cabin: 2

Crew Berths: 2

Crew Sleeps: 2

Crew Heads: 1

Hull and Deck Information

Hull Material: Fiberglass

Hull Color: Red

Engine Information

Engines: 2

Manufacturer: MTU

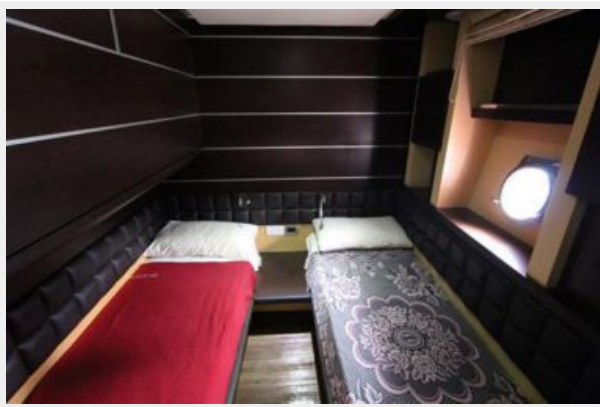
Model: 16V 2000 M91

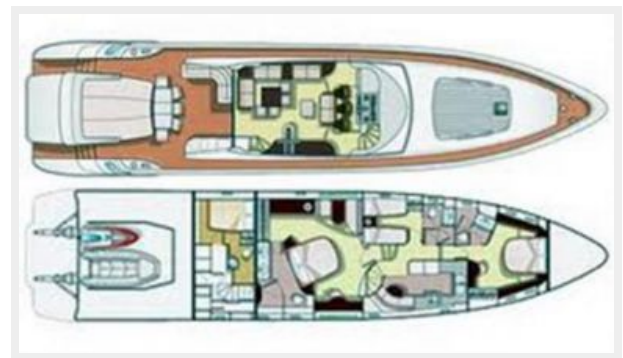
Engine Type: Inboard

Fuel Type: Diesel

PHOTOS







CONTACTS

Andrey Shestakov, leading yacht broker of the sales department of Shestakov Yacht Sales Inc. Shestakov Yacht Sales Inc., the official representative of the Miami/Fort Lauderdale FL headquarters.

Contact details

Email: andrey@shestakovyachtsales.com

Web: shestakovyachtsales.com/en/

Telephones

USA: +1(954)274-4435

Office hours

Monday – Saturday: **9:00 - 21:00** EDT

Sunday: **closed**

Address



Harbour Towne Marina, 850 NE 3rd St,
STE 213, Dania, FL 33004