

## 36 OPEN FJORD TENDER — HANSE



**Builder:** HANSE

**Year Built:** 2013

**Model:** Tender

**Price:** PRICE ON APPLICATION

**Location:** France

**LOA:** 35' 6" (10.80m)

**Beam:** 12' 0" (3.64m)

**Max Draft:** 3' 6" (1.05m)

**Max Speed:** 42 Kts. (48 MPH)

Our experienced yacht broker, Andrey Shestakov, will help you choose and buy a yacht that best suits your needs 36 Open Fjord tender — HANSE from our catalogue. Presently, at Shestakov Yacht Sales Inc., we have a wide variety of yachts available on our sale's list. We also work in close contact with all the big yacht manufacturers from all over the world.

If you would like to buy a yacht 36 Open Fjord tender — HANSE or would like help answering any questions concerning purchasing, selling or chartering a yacht, please call +1(954)274-4435

---

# TABLE OF CONTENTS

---

|                                |    |
|--------------------------------|----|
| TABLE OF CONTENTS              | 2  |
| SPECIFICATIONS                 | 3  |
| Basic Information              | 3  |
| Dimensions                     | 3  |
| Speed, Capacities and Weight   | 3  |
| Accommodations                 | 3  |
| Hull and Deck Information      | 3  |
| Engine Information             | 4  |
| DETAILED INFORMATION           | 5  |
| Specifications and option list | 5  |
| Exclusions                     | 5  |
| Disclaimer                     | 5  |
| PHOTOS                         | 6  |
| CONTACTS                       | 10 |
| Contact details                | 10 |
| Telephones                     | 10 |
| Office hours                   | 10 |
| Address                        | 10 |

---

# SPECIFICATIONS

---

## Basic Information

---

**Category:** Tender

**Model Year:** 2013

**Year Built:** 2013

**Country:** France

## Dimensions

---

**LOA:** 35' 6" (10.80m)

**Beam:** 12' 0" (3.64m)

**Max Draft:** 3' 6" (1.05m)

## Speed, Capacities and Weight

---

**Max Speed:** 42 Kts. (48 MPH)

**Displacement:** 13227.73572 Pounds

**Water Capacity:** 42.26752832 Gallons

**Fuel Capacity:** 158.5032312 Gallons

## Accommodations

---

**Total Cabins:** 1

**Sleeps:** 2

**Total Heads:** 1

## Hull and Deck Information

---

**Hull Material:** FRP

**Deck Material:** Teak

**Hull Color:** White

---

## Engine Information

---

**Engines:** 2

**Manufacturer:** Volvo

**Model:** D4 300 HP

**Engine Type:** Inboard

**Fuel Type:** Diesel

---

# DETAILED INFORMATION

---

## Specifications and option list

---

Dimensions: Length overall: 10.80 m Beam: 3.64 m Draft: 1.05 m Displacement: 6000 Kilogrammes Engines: 2x Volvo D4 300A Maximum speed: 42 knots Tanks capacities: Fuel: 600 Litres Fresh water: 160 Litres Layout: - A double berth - A bathroom with shower Option list - Upgrade engines D4 300 HP - Towing plates with hull re-enforcement & towing kit - Grey floating line painted - White hull - Rubrail around the hull in white extra wide 125mm - White teak gaps - Sunbed cushions and front table teak with carbon legs - Multifunction chart plotter SIMRAD NSE 08, GPS & Sunview screen - Teak deck in cockpit area and engine cover - Cover on side walls in hull colour - Teak on sidewalks and bow - Electric Anchor winch with remote control - T-top with grey covers - SIMRAD VHF - Extra 2 battery pack - Chill out Bimini stern - Joystick - Entertainment high perform. Upgrade, subwoofer, ampl - Fusion MS AV 700 radio/Cd/DvD incl. Docking station i-phon1 e - Underwater lights 4x with 3 colour changing options - Cover/Canopy Seats Pilot area and stern sunbed - Courtesy deck led lights multicolour - Swimming platform extension with teak - Both sides boarding steps with Lollipop handrails - Special ARMSTRONG swimming ladder - Guardrails with 2 gates at stern - Spraytop fronseating area - Inverter 12V 1600W - Interior wood white oak - Upholstery exterior special selection - Special FJORD fender kit 6x

## Exclusions

---

Owner's personal belongings.

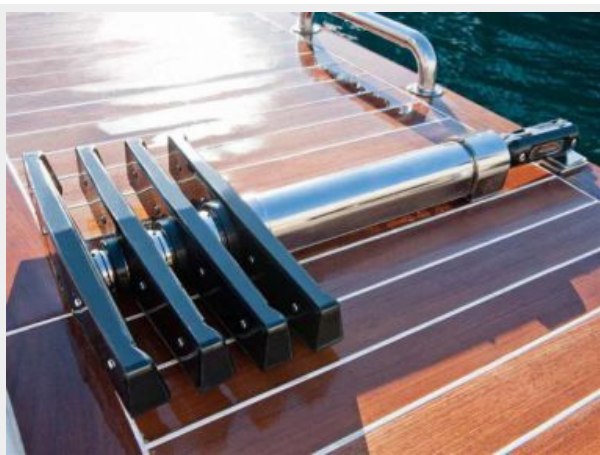
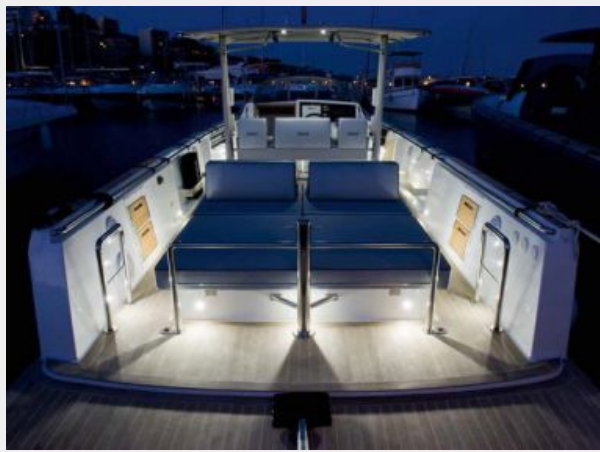
## Disclaimer

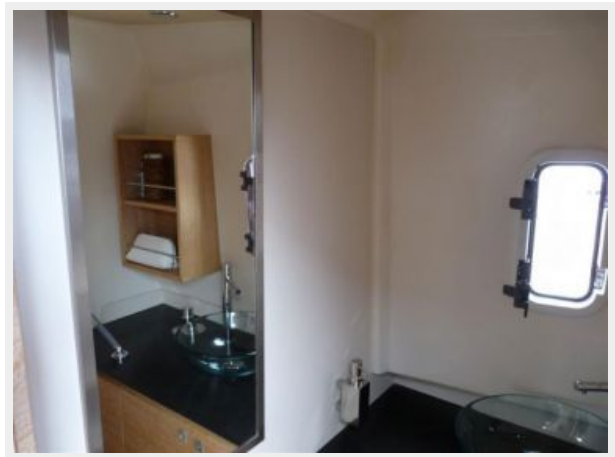
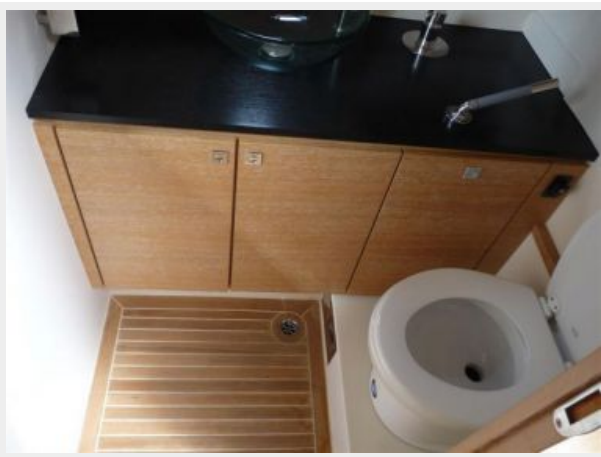
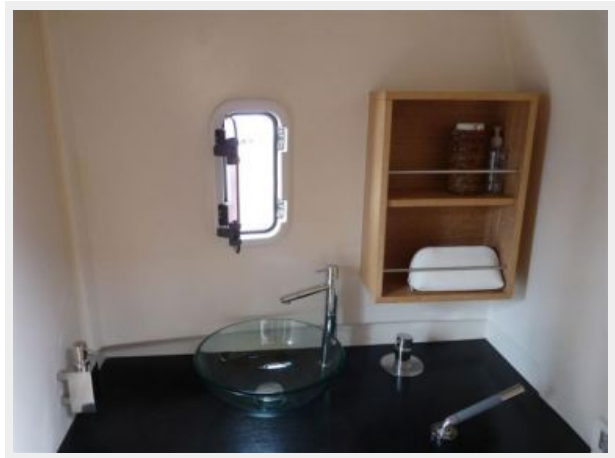
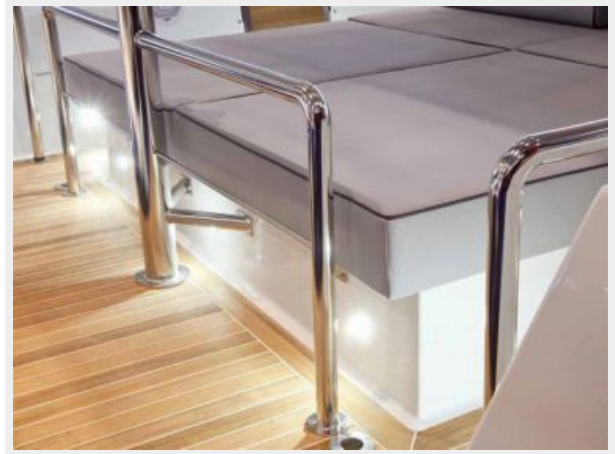
---

The Company offers the details of this vessel or yacht in good faith but cannot guarantee or warrant the accuracy of this information nor warrant the condition of the vessel. A buyer should instruct his representatives, agents, or his surveyors, to investigate such details as the buyer desires validated. This vessel or yacht is offered subject to prior sale, price change, or withdrawal without notice.

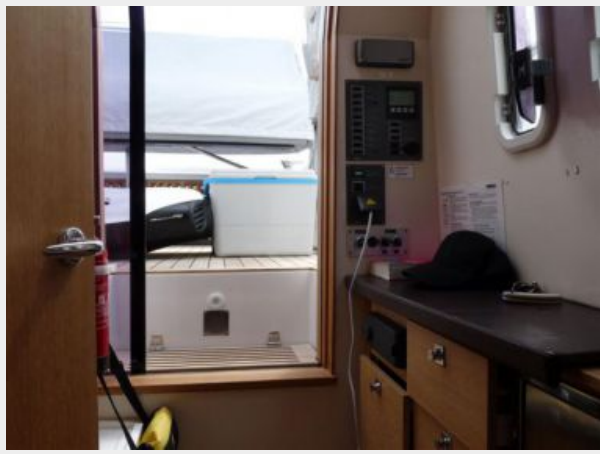
# PHOTOS











---

# CONTACTS

---

Andrey Shestakov, leading yacht broker of the sales department of Shestakov Yacht Sales Inc. Shestakov Yacht Sales Inc., the official representative of the Miami/Fort Lauderdale FL headquarters.

---

## Contact details

---

Email: [andrey@shestakovyachtsales.com](mailto:andrey@shestakovyachtsales.com)

Web: [shestakovyachtsales.com/en/](http://shestakovyachtsales.com/en/)

---

## Telephones

---

USA: +1(954)274-4435

---

## Office hours

---

Monday – Saturday: **9:00 - 21:00** EDT

Sunday: **closed**

---

## Address

---



Harbour Towne Marina, 850 NE 3rd St,  
STE 213, Dania, FL 33004