

KAY — SUNSEEKER



Builder: SUNSEEKER

Year Built: 2012

Model: Motor Yacht

Price: PRICE ON APPLICATION

Location: United States

LOA: 88' 0" (26.82m)

Beam: 21' 0" (6.40m)

Max Draft: 6' 6" (1.98m)

Cruise Speed: 24 Kts. (28 MPH)

Max Speed: 28 Kts. (32 MPH)

Our experienced yacht broker, Andrey Shestakov, will help you choose and buy a yacht that best suits your needs Kay — SUNSEEKER from our catalogue. Presently, at Shestakov Yacht Sales Inc., we have a wide variety of yachts available on our sale's list. We also work in close contact with all the big yacht manufacturers from all over the world.

If you would like to buy a yacht Kay — SUNSEEKER or would like help answering any questions concerning purchasing, selling or chartering a yacht, please call +1(954)274-4435

TABLE OF CONTENTS

TABLE OF CONTENTS	2
SPECIFICATIONS	4
Overview	4
Basic Information	4
Dimensions	4
Speed, Capacities and Weight	4
Accommodations	4
Hull and Deck Information	5
Engine Information	5
DETAILED INFORMATION	6
Introduction	6
Major Highlights	6
Salon	6
Galley	7
Day Head	7
Lower Main Helm Station	7
Navigation & Communications Equipment	8
Audio & Visual Equipment	8
Midship Master Stateroom	8
Forward VIP Stateroom	9
Aft Starboard Guest Stateroom	9
Aft Port Guest Stateroom	9
Crew Quarters	10
Aft Crew Mess	10
Flybridge	10
Flybridge Helm	10
Deck Equipment	11
Cockpit	11

Engine Room/Mechanical Equipment	11
Bathing Platform	12
Electrical Equipment	12
Hull/Underwater Gear	13
Exclusions	13
Exclusions	13
Disclaimer	13
PHOTOS	14
CONTACTS	23
Contact details	23
Telephones	23
Office hours	23
Address	23

SPECIFICATIONS

Overview

Owner's change of plans creates a RARE OPPORTUNITY to own a 2012, Sunseeker 88' Yacht!

Priced to Sell - Like-new condition - Captain Maintained!

Not for Sale to US Residents While in US Waters!

Basic Information

Category: Motor Yacht

Model Year: 2012

Year Built: 2012

Country: United States

Fly Bridge: Yes

Cockpit: Yes

Dimensions

LOA: 88' 0" (26.82m)

Beam: 21' 0" (6.40m)

Max Draft: 6' 6" (1.98m)

Speed, Capacities and Weight

Cruise Speed: 24 Kts. (28 MPH)

Max Speed: 28 Kts. (32 MPH)

Displacement: 67600.34339706 Pounds

Water Capacity: 396.258078 Gallons

Fuel Capacity: 2245.462442 Gallons

Accommodations

Total Cabins: 4

Sleeps: 10

Total Heads: 5

Crew Sleeps: 4

Hull and Deck Information

Hull Material: Fiberglass

Engine Information

Engines: 2

Manufacturer: MTU

Model: 12V 2000 N94

Engine Type: Inboard

Fuel Type: Diesel

DETAILED INFORMATION

Introduction

“Kay” is a 2012 88 Yacht that is truly better than new. Her meticulous owner fitted her with all of the right options and upgrades. She boasts a 4 stateroom/5 head layout which includes a day head plus crew quarters for 4. There are Pullman berths in 2 of the guest staterooms. Arrange a visit aboard and prepare to be impressed!

Major Highlights

- 4 stateroom/5 head (including on-deck dayhead) & crew for 4
- Satin cherry interior with walnut flooring
- Shore Power converter
- Extra fuel capacity - total capacity 8500L
- Water maker
- Hard top w/ electric canopy with extension
- Digital ABT Trac Stabilizers
- 3rd docking station (starboard)
- Twin 32 kw Kohler GenSets
- Hydraulic 5 m passerelle
- Marine Air Tropical A/C - 3 compressors
- Underwater lights in transom

Salon

- Bar area w/ wine refrigerator
- Sofa
- Armchair
- Coffee table
- Scatter cushions
- 50” TV - pop-up flat screen - Samsung
- Bose Stereo system w/ remote system
- Patio door curtains w/ tie back
- Side windows w/ Roman blinds
- Table lamps
- Dining table w/ dining for 12
- Storage cupboards
- Access forward to main helm station
- Door leading to galley
- Stairs leading to master stateroom and two guest cabins

- LED lighting

Galley

- Whirlpool refrigerator/freezer w/ icemaker
- Miele oven
- Miele 4 burner stove
- Whirlpool Microwave
- Dishwasher
- Hob extractor AC
- Stainless sink
- Satin cherry cabinetry
- Granite countertops
- Plentiful storage
- Door to port side deck

Day Head

- Tile flooring
- Polished chrome fittings
- Gold glass vanity
- Window w/ Roman blinds
- Satin cherry wood cabinet w/ gloss finish
- Tecma head 24v

Lower Main Helm Station

- (2) Helm seats
- Hydraulic power steering
- Digital bar chart display for fuel monitoring system
- Magnetic compass
- Horn control
- Switch panels
- Remote spotlight control
- Trim tab controls
- Rudder indicator
- Analogue engine instrumentation
- Fresh water gauge
- Main control and monitoring panel
- Door to starboard side deck
- Sofa seat on port side

- Chart stowage
- Staircase to VIP stateroom

Navigation & Communications Equipment

- (2) Autopilot (Raymarine E-120/W) - upper & lower helm
- (3) Depth and speed displays (Raymarine ST70) - upper & lower helm
- Raymarine AIS Sirius weather anemometer
- Lewmar Auto Anchor AA560 - upper & lower helm
- ABT Trac Zero Speed Stabilizers control - upper & lower helm
- Sanshin HR-1012 - upper & lower helm
- ABT Trac bow & stern thrusters
- Electronic throttles
- Raymarine 240 VHF- upper & lower helm
- Sea Fire - upper & lower helm
- Raymarine speaker
- Ritchie compass - upper & lower helm
- FM200 Fire System FM200M-002
- Raymarine HD Digital Radar
- ACR
- EPIRB
- Intelia SAT TV antenna
- FLIR

Audio & Visual Equipment

- CCTV system throughout
- Raymarine night vision cameras
- Bose Lifestyle system (SA3 Amps) - interior, aft, flybridge, bow, independent
- Glomex TV antenna
- Samsung DVD player
- 50" pop-up Samsung flatscreen TV

Midship Master Stateroom

- Double berth w/ storage below and drawers at end
- 24v bedside lights
- Dressing table w/ pouffe
- Sofa
- 40" flatscreen TV on bulkhead
- DVD/CD player w/ 2 speakers

- Portholes w/ blinds & blackout
- Escape hatch on forward bulkhead
- Fitted carpet
- Walk-in wardrobe
- Ensuite head

Forward VIP Stateroom

- Double berth w/ storage below and drawers at end
- 24v bedside lights
- Dressing table w/ stool
- Sofa
- 40" flatscreen TV on bulkhead
- DVD/CD player w/ 2 speakers
- Portholes w/ blinds and blackout
- Skylight w/ blind
- Fitted carpet
- Walk-in wardrobe
- Ensuite head

Aft Starboard Guest Stateroom

- Two single berths w/ storage below - and pulman berth
- 24v reading lights
- Wardrobe
- Porthole w/ blinds & blackout
- 19" flatscreen TV
- DVD/CD player
- Fitted carpet
- Ensuite head

Aft Port Guest Stateroom

- Two single berths w/ storage below & pulman berth
- 24v reading lights
- Wardrobe
- Porthole w/ blinds & blackout
- 19" flatscreen TV
- DVD/CD player
- Fitted carpet
- Ensuite head

Crew Quarters

- Forward crew w/ twin bunk berths
- Aft crew w/ twin berths
- Crew head w/ shower

Aft Crew Mess

- Accessed from stern
- Refrigerator
- Large capacity ice maker
- Microwave
- Sink
- Opening porthole
- Seating area
- Table
- 19" flatscreen TV
- DVD/CD
- Access to engine room and crew cabins

Flybridge

- Teak Deck
- GRP Hardtop w/ retractable center canopy & aft extending sun canopy
- Wetbar w/ coolbox, sink & Raritan icemaker
- Teak tables
- Bose speakers/zone control
- Chaise lounge area for 2
- Sofa seating area
- Table for 12
- Sun lounge/large sofa sun bed area

Flybridge Helm

- (2) Helm seats
- Hydraulic steering
- Duplicate engine controls
- Analogue engine instrumentation
- Remote spotlight control
- Magnetic compass
- Steering indicator

- Trim tab control
- Horn control
- Flybridge instrument cover

Deck Equipment

- Teak Deck
- Twin Anchors
- Stern spring cleats
- Stainless bow cleats and fairleads
- Stainless spring cleats w/ chafing bars
- Stainless pulpit and cockpit rails
- Stainless fendering
- Stainless bow roller
- Stainless bow plate
- Deckwash w/ outlets forward & aft
- Chain locker
- Pantograph windscreen wipers & washers
- Fresh water filler
- Fuel fillers port/starboard
- IMCO navigation lights
- Remote controlled spotlight
- Bow seat, sunbathing pad w/ adjustable back rest, and teak table top (seating for 6)
- Bose speakers on foredeck/zone control
- Side mount stairway w/ dedicated storage
- Windscreen cover

Cockpit

- Teak Deck
- Stairs to flybridge
- Stainless steel framed sliding door to salon
- Engine access hatch
- Wetbar w/ coolbox, sink & icemaker
- Teak table – high gloss
- Bose speakers/zone control
- Fixed engine control station
- Submersible swim platform

Engine Room/Mechanical Equipment

- ABT Trac Star Digital Fin Stabilizers
- Marine Tropical Airconditioning - 3 compressors
- Soundproofed throughout
- Fuel filters/water separators to engines and generators
- Upgraded fuel capacity to 8500L
- FM200 automatic/manual fire extinguishing system
- Automatic bilge and flood pumps w/ high level alarms
- Air extraction fans AC
- Generator exhaust silencers and water separators
- Engine exhaust dry risers and water injection
- Strainers to all raw water inlets
- Sensor connected to fire detection system
- Standby fresh water pump
- Oil change system for engines, gearboxes and generators
- Watermaker Sea Recovery Aqua Matic 74 gpd
- Head Hunter sewage treatment system
- Storage cage in engine room

Bathing Platform

- Teak laid hydraulic swim platform
- Fold out stainless swim ladder
- Hot & cold shower
- Access to crew quarters
- 5m Telescopic passerelle

Electrical Equipment

- Seamless transfer (for AV equipment when transferring between shorepower and gens plus changeover between gens by providing a supported power supply via an inverter)
- ASEA converter system
- Twin Kohler 32 kw - as of 10/18/14, 2412 and 2242 hrs. (2250 service completed 7/2014)
- Dockside AC
- Glendinning cablemaster - 112' new cord
- Semi-automatic AC power management system
- 24v and 12v DC electric system w/ full circuit breaker protection
- (8) engine batteries 24v circuit
- (8) domestic batteries 24v circuit
- (4) gen batteries 12v circuit
- Alternator split charging system Remote battery switches
- (2) 95 amp battery charger for 24v circuits
- 40 amp battery charger for 12v circuits

- (2) 2 kw immersion heaters for clarifier
- Fire detection system in all cabins

Hull/Underwater Gear

- Navy boot stripe
- Underwater lights
- NAB 5 blade propellers
- Bronze (AB2) P-Brackets
- 90 mm Temet 25 propeller shafts
- Self aligning shaft seal w/ spare seal
- High performance bronze rudders
- Full cathodic bonding system to zinc anodes
- Stainless steel trim tabs
- Hydraulic bow thruster
- Hydraulic stern thruster
- ABT Trac Digital Fin Stabilizers

Exclusions

Paintings / artwork, kayaks, and jet ski are excluded from sale. Owner's personal items.

Exclusions

Owner's personal belongings.

Disclaimer

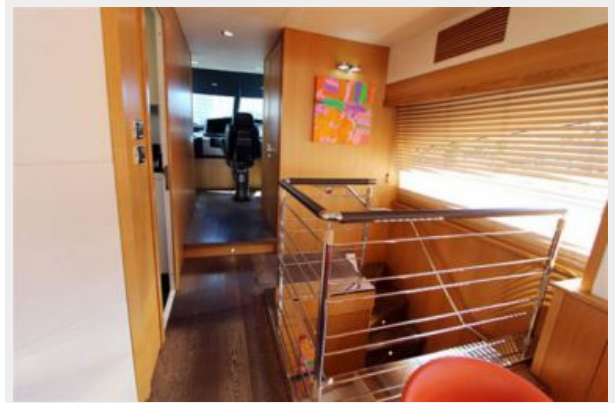
The Company offers the details of this vessel or yacht in good faith but cannot guarantee or warrant the accuracy of this information nor warrant the condition of the vessel. A buyer should instruct his representatives, agents, or his surveyors, to investigate such details as the buyer desires validated. This vessel or yacht is offered subject to prior sale, price change, or withdrawal without notice.

PHOTOS

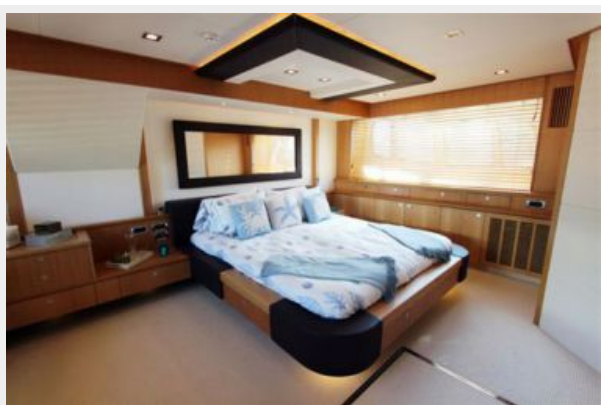
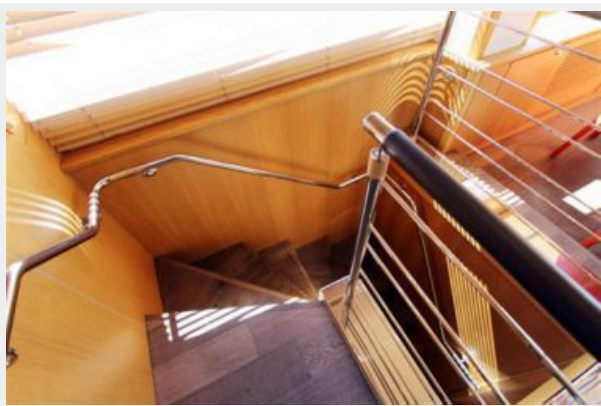


















CONTACTS

Andrey Shestakov, leading yacht broker of the sales department of Shestakov Yacht Sales Inc. Shestakov Yacht Sales Inc., the official representative of the Miami/Fort Lauderdale FL headquarters.

Contact details

Email: andrey@shestakovyachtsales.com

Web: shestakovyachtsales.com/en/

Telephones

USA: +1(954)274-4435

Office hours

Monday – Saturday: **9:00 - 21:00** EDT

Sunday: **closed**

Address



Harbour Towne Marina, 850 NE 3rd St,
STE 213, Dania, FL 33004