

OUTTA THE BLUE — OCEAN YACHTS



Builder: [Ocean Yachts](#)

Year Built: 1986

Model: Sport Fisherman

Price: PRICE ON APPLICATION

Location: United States

LOA: 38' 4" (11.68m)

Beam: 13' 8" (4.17m)

Min Draft: 3' 2" (0.97m)

Cruise Speed: 24 Kts. (28 MPH)

Max Speed: 27 Kts. (31 MPH)

Our experienced yacht broker, Andrey Shestakov, will help you choose and buy a yacht that best suits your needs **Outta The Blue — Ocean Yachts** from our catalogue. Presently, at Shestakov Yacht Sales Inc., we have a wide variety of yachts available on our sale's list. We also work in close contact with all the big yacht manufacturers from all over the world.

If you would like to buy a yacht **Outta The Blue — Ocean Yachts** or would like help answering any questions concerning purchasing, selling or chartering a yacht, please call **+1(954)274-4435**

TABLE OF CONTENTS

TABLE OF CONTENTS	2
SPECIFICATIONS	3
Overview	3
Basic Information	3
Dimensions	3
Speed, Capacities and Weight	4
Accommodations	4
Hull and Deck Information	4
Engine Information	4
PHOTOS	5
CONTACTS	18
Contact details	18
Telephones	18
Office hours	18
Address	18

SPECIFICATIONS

Overview

Newly Listed! Has never been fished & Meticulously Maintained! Complete Interior Refit!

Third Owner, 3 Years of Ownership. Boat resided on Great Lakes prior to being relocated to Maryland. Single Stateroom layout, galley down. Cat 3208's, 355 HP, 23/24 Knot Cruise. Front 2/3 of Eisenglass replaced, Completely refit interior, Raymarine C120 Series Radar, Sonar, Chartplotter, Closed Array Radar. All exterior teak recently stained. Vessel is in the water, ready for a showing and located here at our docks.

Newly Listed! Has never been fished & Meticulously Maintained! Complete Interior Refit!

Third Owner, 3 Years of Ownership. Boat resided on Great Lakes prior to being relocated to Maryland. Single Stateroom layout, galley down. Cat 3208's, 355 HP, 23/24 Knot Cruise. Front 2/3 of Eisenglass replaced, Completely refit interior, Raymarine C120 Series Radar, Sonar, Chartplotter, Closed Array Radar. All exterior teak recently stained. Vessel is in the water, ready for a showing and located here at our docks.

Basic Information

Category: Sport Fisherman

Sub Category: Convertible

Model Year: 1986

Year Built: 1986

Refit Year: 2011

Country: United States

Vessel Top: Hardtop

Fly Bridge: Yes

Cockpit: Yes

Dimensions

LOA: 38' 4" (11.68m)

Beam: 13' 8" (4.17m)

Min Draft: 3' 2" (0.97m)

Speed, Capacities and Weight

Cruise Speed: 24 Kts. (28 MPH)

Max Speed: 27 Kts. (31 MPH)

Displacement: 23000 Pounds

Water Capacity: 160 Gallons

Holding Tank: 40 Gallons

Fuel Capacity: 354 Gallons

Accommodations

Total Cabins: 1

Sleeps: 4

Total Heads: 1

Hull and Deck Information

Hull Material: Fiberglass

Engine Information

Engines: 2

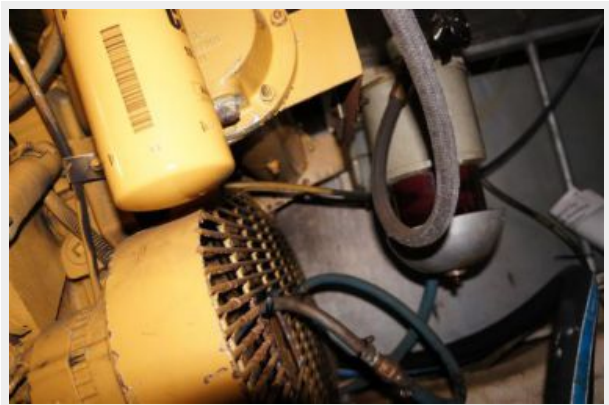
Manufacturer: Caterpillar

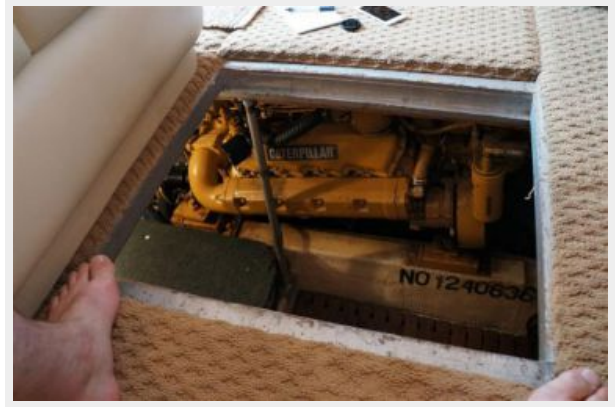
Model: 3208

Engine Type: Inboard

Fuel Type: Diesel

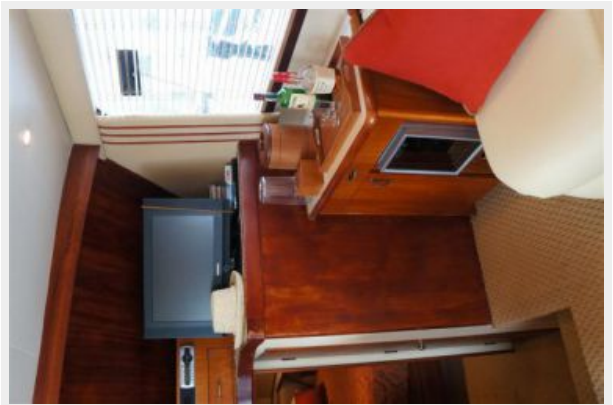
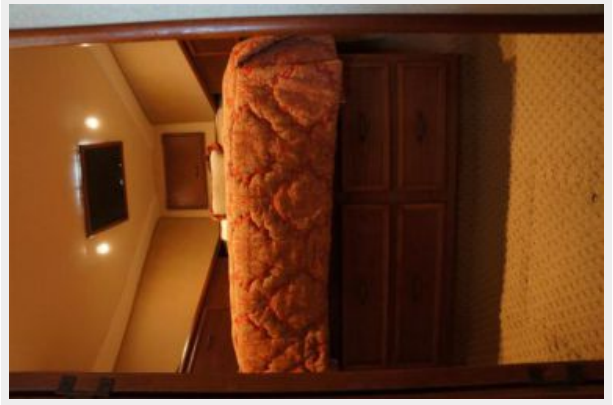
PHOTOS

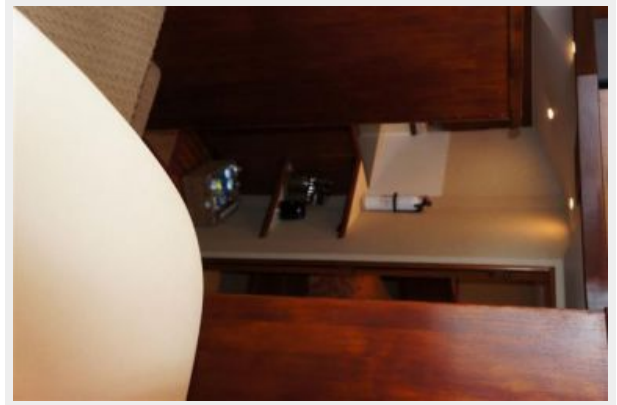








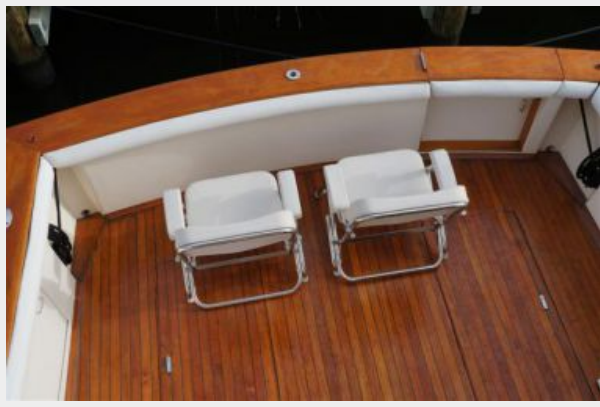


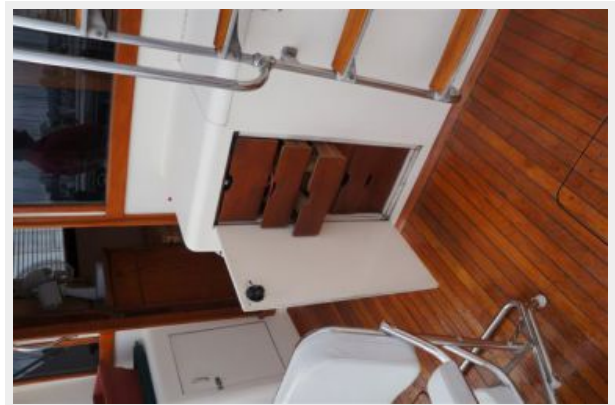




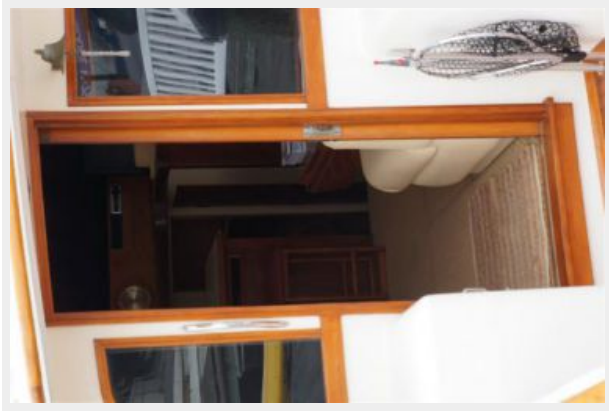












CONTACTS

Andrey Shestakov, leading yacht broker of the sales department of Shestakov Yacht Sales Inc. Shestakov Yacht Sales Inc., the official representative of the Miami/Fort Lauderdale FL headquarters.

Contact details

Email: andrey@shestakovyachtsales.com

Web: shestakovyachtsales.com/en/

Telephones

USA: +1(954)274-4435

Office hours

Monday – Saturday: **9:00 - 21:00** EDT

Sunday: **closed**

Address



Harbour Towne Marina, 850 NE 3rd St,
STE 213, Dania, FL 33004