

GOLDEN GIRL — FAY BOWEN



Builder: Fay Bowen

Year Built: 1926

Model: Cruiser

Price: PRICE ON APPLICATION

Location: United States

LOA: 30' 0" (9.14m)

Beam: 6' 7" (2.01m)

Min Draft: 1' 4" (0.41m)

Our experienced yacht broker, Andrey Shestakov, will help you choose and buy a yacht that best suits your needs **Golden Girl — Fay Bowen** from our catalogue. Presently, at Shestakov Yacht Sales Inc., we have a wide variety of yachts available on our sale's list. We also work in close contact with all the big yacht manufacturers from all over the world.

If you would like to buy a yacht **Golden Girl — Fay Bowen** or would like help answering any questions concerning purchasing, selling or chartering a yacht, please call **+1(954)274-4435**

TABLE OF CONTENTS

TABLE OF CONTENTS	2
SPECIFICATIONS	3
Overview	3
Basic Information	3
Dimensions	3
Speed, Capacities and Weight	3
Hull and Deck Information	3
Engine Information	4
PHOTOS	5
CONTACTS	10
Contact details	10
Telephones	10
Office hours	10
Address	10

SPECIFICATIONS

Overview

One of the finest examples of the Finger Lakes builder. This is the very rare and sought after "Golden Arrow". This boat is in Concours Condition with virtually no flaws and has been featured in magazines and books before, marveling at her stylish lines. It is most remembered in the book Wood Through water being shown in all of her glory on page 45 and 51. The boat was for many years owned by the Lewis Family who were generous benefactors to the Antique Boat Museum. The boat is also being offered with a Fay & Bowen LN43 which is a 50 HP Motor which was the correct motor for the boat when it was first delivered.

Basic Information

Category: Cruiser

Sub Category: Express

Model Year: 1926

Year Built: 1926

Country: United States

Vessel Top: Bimini Top

Dimensions

LOA: 30' 0" (9.14m)

LWL: 29' 10" (9.09m)

Beam: 6' 7" (2.01m)

Min Draft: 1' 4" (0.41m)

Speed, Capacities and Weight

Displacement: 4000 Pounds

Hull and Deck Information

Hull Material: Wood

Hull Color: Blue

Engine Information

Engines: 1

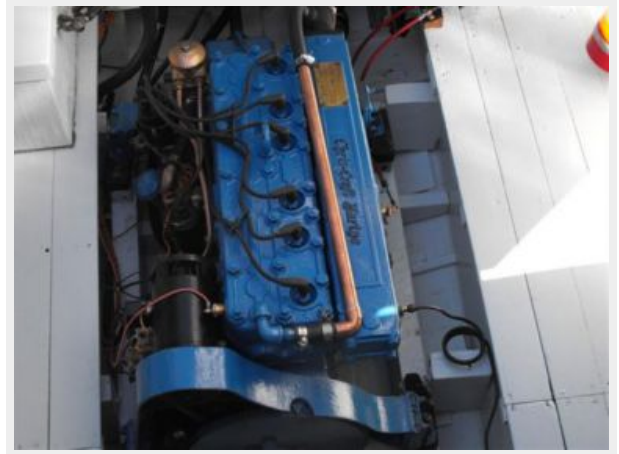
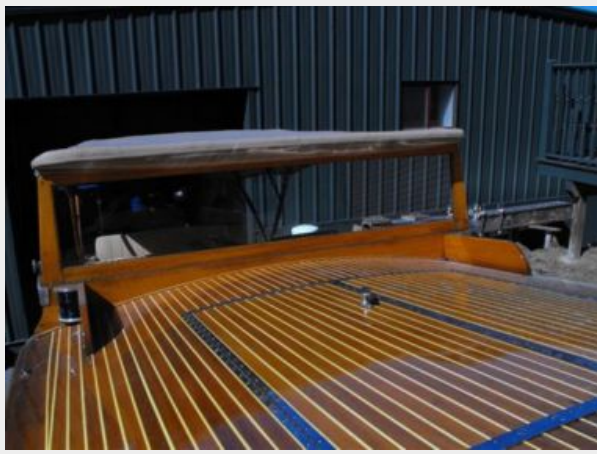
Manufacturer: Chris Craft

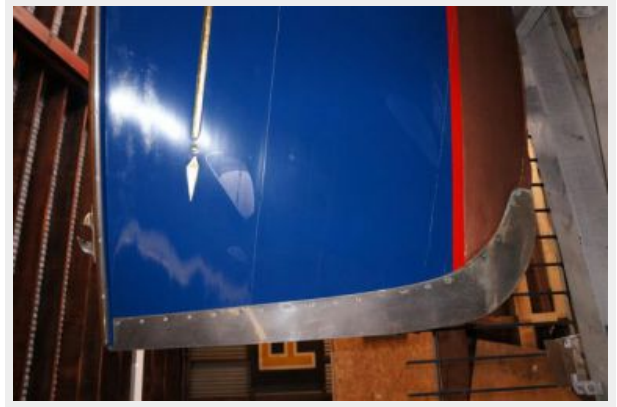
Model: Model K

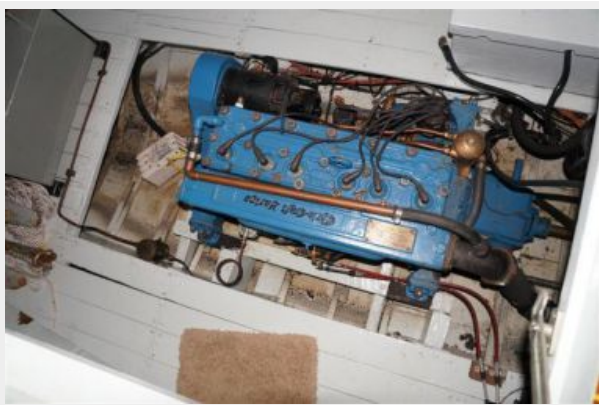
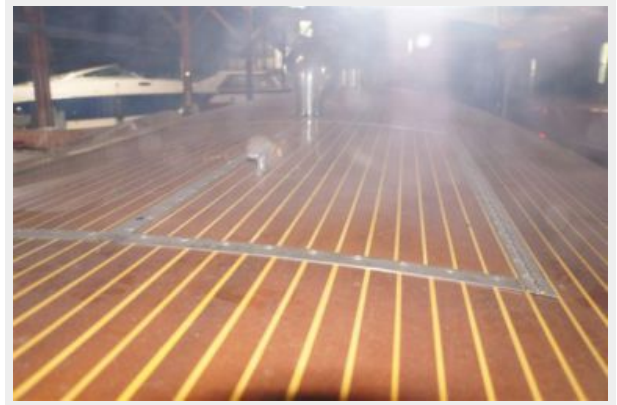
Engine Type: Inboard

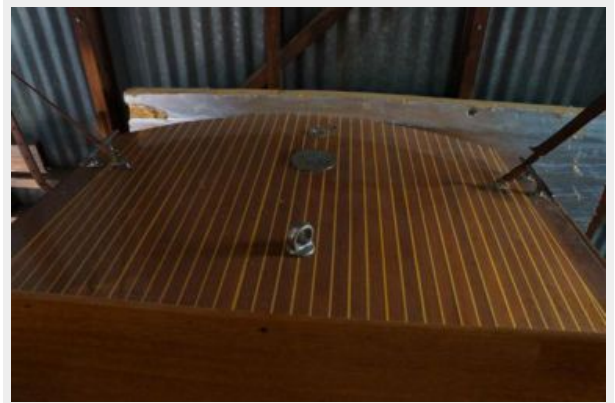
Fuel Type: Gas

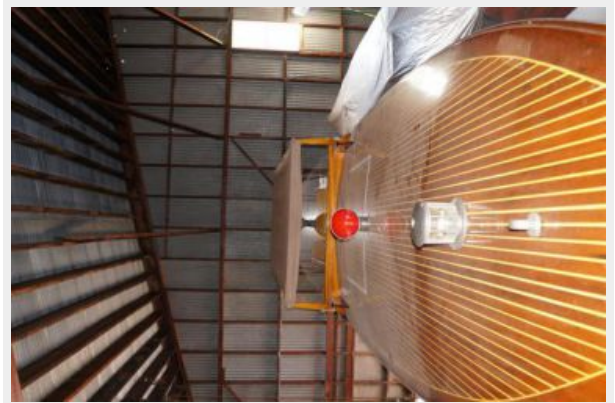
PHOTOS











CONTACTS

Andrey Shestakov, leading yacht broker of the sales department of Shestakov Yacht Sales Inc. Shestakov Yacht Sales Inc., the official representative of the Miami/Fort Lauderdale FL headquarters.

Contact details

Email: andrey@shestakovyachtsales.com

Web: shestakovyachtsales.com/en/

Telephones

USA: +1(954)274-4435

Office hours

Monday – Saturday: **9:00 - 21:00** EDT

Sunday: **closed**

Address



Harbour Towne Marina, 850 NE 3rd St,
STE 213, Dania, FL 33004