

MIDNIGHT SERENADE — FAY BOWEN



Builder: Fay Bowen

LOA: 26' 0" (7.92m)

Year Built: 1914

Beam: 6' 2" (1.88m)

Model: Deck Boat

Price: PRICE ON APPLICATION

Location: United States

Our experienced yacht broker, Andrey Shestakov, will help you choose and buy a yacht that best suits your needs **Midnight Serenade — Fay Bowen** from our catalogue. Presently, at Shestakov Yacht Sales Inc., we have a wide variety of yachts available on our sale's list. We also work in close contact with all the big yacht manufacturers from all over the world.

If you would like to buy a yacht **Midnight Serenade — Fay Bowen** or would like help answering any questions concerning purchasing, selling or chartering a yacht, please call **+1(954)274-4435**

TABLE OF CONTENTS

TABLE OF CONTENTS	2
SPECIFICATIONS	3
Overview	3
Basic Information	3
Dimensions	3
Speed, Capacities and Weight	3
Hull and Deck Information	4
Engine Information	4
PHOTOS	5
CONTACTS	11
Contact details	11
Telephones	11
Office hours	11
Address	11

SPECIFICATIONS

Overview

Fay & Bowen launches and runabouts are the slim, glistening, brass-bejeweled ladies that still slide over the waters of the Adirondacks with the poise of socialites arriving at the opera. Since 1901, Fay & Bowen boats have been as linked to the Adirondacks and their mountain lakes as the region's ubiquitous guide-boats.

Few of the Great Camps were without one or two; Lake George alone had three Fay & Bowen dealerships; and the list of Fay & Bowen owners in the 1920s reads like a Who's Who of prominent Americans from Victor Herbert to the Uihlein family, brewers of Schlitz beer. The enterprise that Mr. Fay and Mr. Bowen started in 1895 as manufacturers of bicycle parts in Auburn, N.Y., and moved to Geneva, N.Y., in 1904 after switching to marine engines and boats, seems to have been a straightforward and uncomplicated company. And it seems to have consistently done a couple of things very well. It built engines and gentleman's launches and it sold them successfully through a large dealer network. It didn't have the flash or energy of powerful personalities that often stood behind the other powerboat builders of its era. It lacked a lucky Chris Smith, an aggressive Gar Wood, an artistic John Hacker, a wealthy Horace Dodge. Compared to its competitors, Fay & Bowen was staid, small-town, uncompromising in its devotion to a first-quality product and a style of boat and boating that finally couldn't compete with the speedboats of the 1920s.

Basic Information

Category: Deck Boat

Model Year: 1914

Year Built: 1914

Country: United States

Dimensions

LOA: 26' 0" (7.92m)

Beam: 6' 2" (1.88m)

Speed, Capacities and Weight

Displacement: 4100 Pounds

Hull and Deck Information

Hull Material: Wood

Hull Color: White

Hull Designer: Walter Fay & Ernest Bowen

Engine Information

Engines: 1

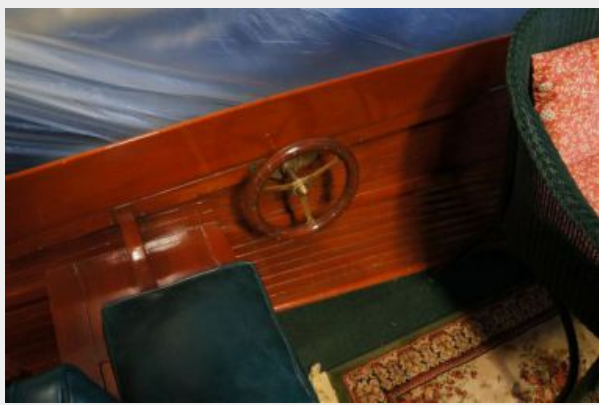
Manufacturer: Ford

Model: Zodiac

Engine Type: Inboard

Fuel Type: Gas

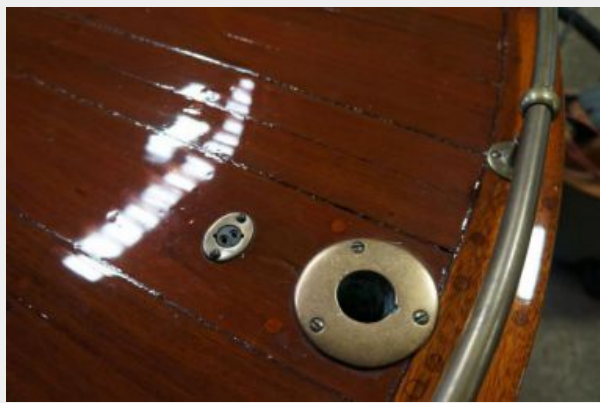
PHOTOS













CONTACTS

Andrey Shestakov, leading yacht broker of the sales department of Shestakov Yacht Sales Inc. Shestakov Yacht Sales Inc., the official representative of the Miami/Fort Lauderdale FL headquarters.

Contact details

Email: andrey@shestakovyachtsales.com

Web: shestakovyachtsales.com/en/

Telephones

USA: +1(954)274-4435

Office hours

Monday – Saturday: **9:00 - 21:00** EDT

Sunday: **closed**

Address



Harbour Towne Marina, 850 NE 3rd St,
STE 213, Dania, FL 33004