

MY DARLINGS — MARIN LUXUR YACHTS



Builder: MARIN LUXUR YACHTS

Year Built: 2014

Model: Mega Yacht

Price: PRICE ON APPLICATION

Location: Greece

LOA: 130' 0" (39.60m)

Beam: 26' 3" (8.00m)

Min Draft: 7' 3" (2.20m)

Max Draft: 8' 3" (2.50m)

Cruise Speed: 12 Kts. (14 MPH)

Max Speed: 14 Kts. (16 MPH)

Our experienced yacht broker, Andrey Shestakov, will help you choose and buy a yacht that best suits your needs **My Darlings — MARIN LUXUR YACHTS** from our catalogue. Presently, at Shestakov Yacht Sales Inc., we have a wide variety of yachts available on our sale's list. We also work in close contact with all the big yacht manufacturers from all over the world.

If you would like to buy a yacht **My Darlings — MARIN LUXUR YACHTS** or would like help answering any questions concerning purchasing, selling or chartering a yacht, please call **+1(954)274-4435**

TABLE OF CONTENTS

TABLE OF CONTENTS	2
SPECIFICATIONS	3
Overview	3
Basic Information	3
Dimensions	3
Speed, Capacities and Weight	4
Accommodations	4
Hull and Deck Information	4
Engine Information	4
PHOTOS	5
CONTACTS	18
Contact details	18
Telephones	18
Office hours	18
Address	18

SPECIFICATIONS

Overview

Major Price Reduction by \$2,000,000

M/Y My Darlings is a Steel hull / Aluminium superstructure construction under Lloyd's +100 A1 SSC Yacht Mono G6, MCH classification. She was first registered in 2014 and introduced at the same year's Monaco Yacht Show receiving a lot of attention for her sleek lines designed by **Giorgio Vafiadis** and her high-end interior styling by **AskDeco**.

The superyacht features volume and deck surfaces comparable to yachts far exceeding her dimensions with a gross tonnage of almost 400. Her accommodation features a spacious on deck master suite and four very comfortable guest cabins. All cabins have en suite bathrooms, while there are also 2 dayheads. The interior includes high end fabrics such as Iwan Mektabi carpets and Novaluce appliqués, and designer furniture such as Fendi, Megaron, Minotti & Sifas.

Two 1000Hp MAN diesel engines offer a low consumption of 210lt/hour at an economical speed of 10kts, while the cruising speed is 12kts and maximum speed at 14kts.

Basic Information

Category: Mega Yacht

Model Year: 2014

Year Built: 2014

Country: Greece

Dimensions

LOA: 130' 0" (39.60m)

LWL: 111' 11" (34.10m)

Beam: 26' 3" (8.00m)

Min Draft: 7' 3" (2.20m)

Max Draft: 8' 3" (2.50m)

Clearance: 34' 6" (10.50m)

Speed, Capacities and Weight

Cruise Speed: 12 Kts. (14 MPH)

Cruise Speed RPM: 1500 Kts.

Cruise Speed Range: 2500

Max Speed: 14 Kts. (16 MPH)

Max Speed RPM: 2100 Kts.

Displacement: 388000.35338428 Pounds

Gross Tonnage: 431 Pounds

Water Capacity: 2705.914328636 Gallons

Holding Tank: 1609.864484888 Gallons

Fuel Capacity: 17663.335912876 Gallons

Fuel Consumption: 55.47613092 Gallons

Accommodations

Total Cabins: 5

Captain Cabin: True

Crew Sleeps: 7

Hull and Deck Information

Hull Material: Steel

Deck Material: Teak

Hull Configuration: Full Displacement

Hull Color: White

Hull Finish: Steel

Hull Designer: Studio Vafiadis

Exterior Designer: Studio Vafiadis

Interior Designer: Askdeco

Engine Information

Engines: 2

Manufacturer: MAN

Model: D2842

Engine Type: Inboard

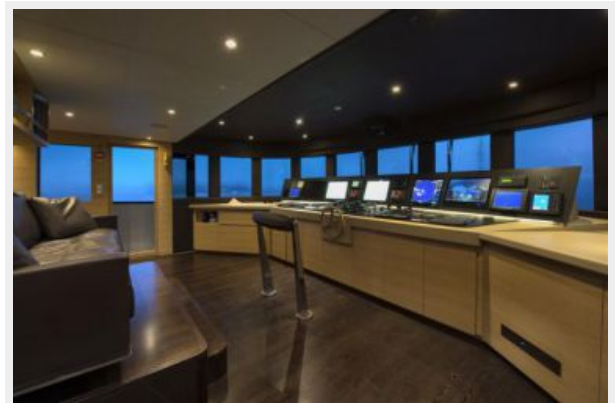
Fuel Type: Diesel

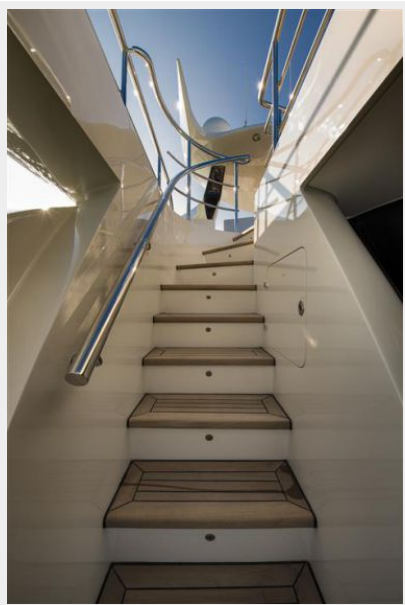
PHOTOS

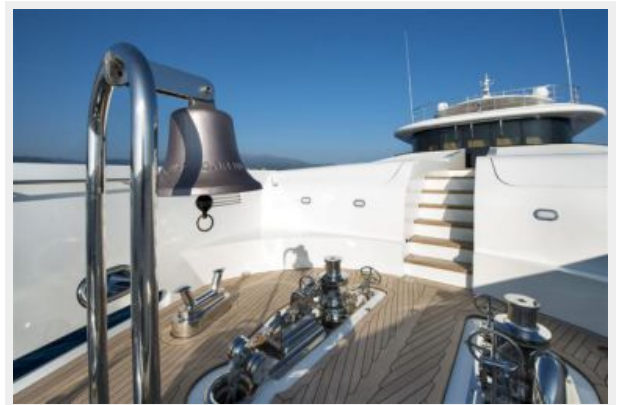
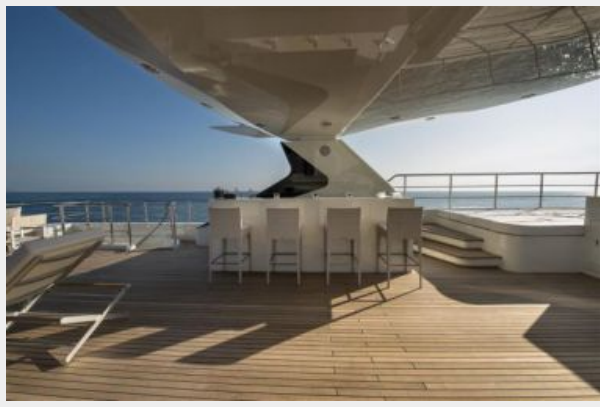








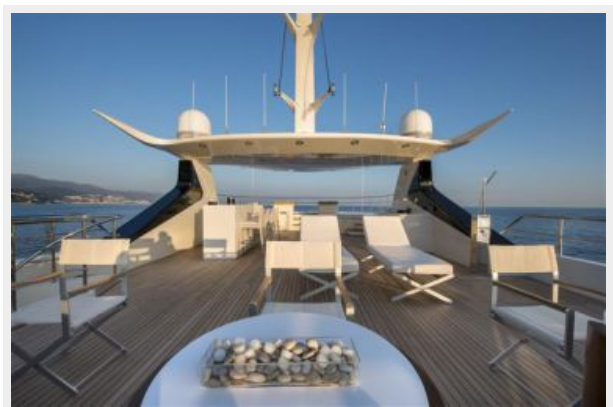
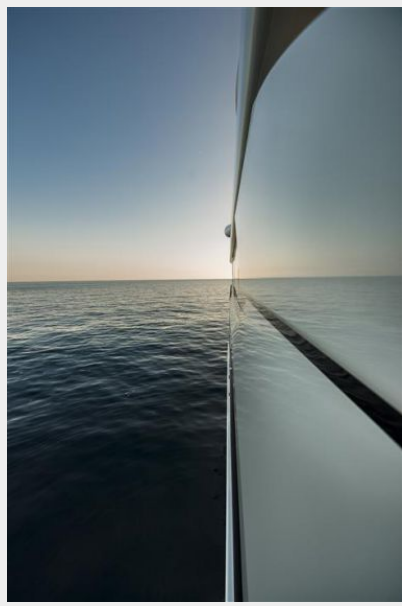
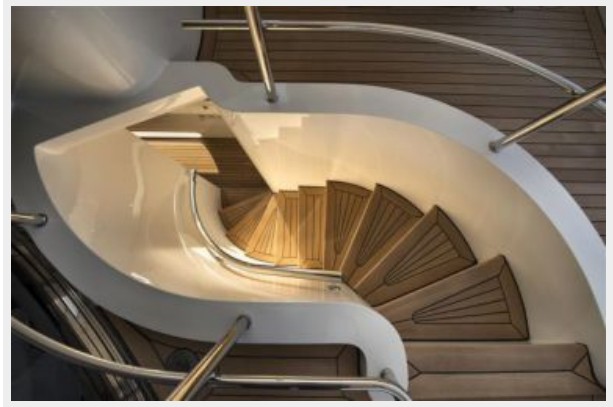


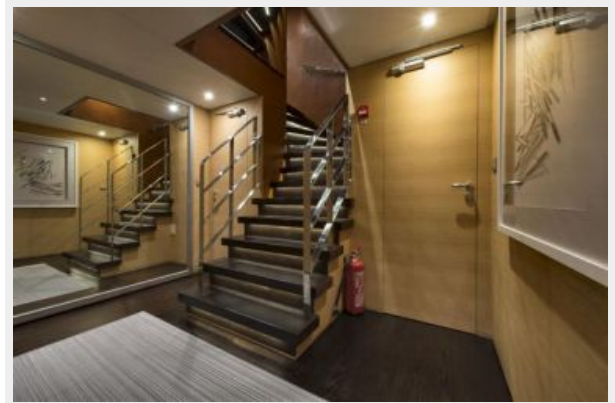


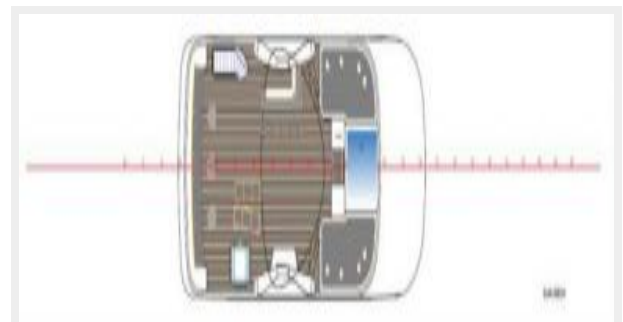
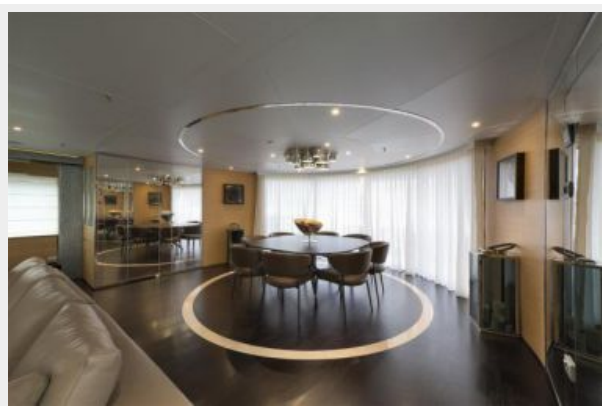


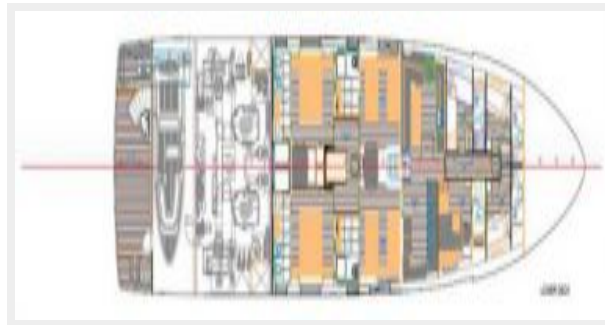
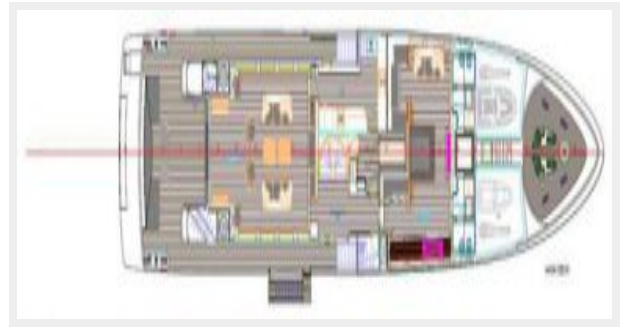
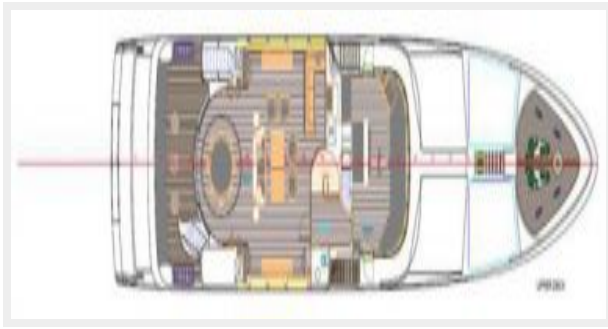












CONTACTS

Andrey Shestakov, leading yacht broker of the sales department of Shestakov Yacht Sales Inc. Shestakov Yacht Sales Inc., the official representative of the Miami/Fort Lauderdale FL headquarters.

Contact details

Email: andrey@shestakovyachtsales.com

Web: shestakovyachtsales.com/en/

Telephones

USA: +1(954)274-4435

Office hours

Monday – Saturday: **9:00 - 21:00** EDT

Sunday: **closed**

Address



Harbour Towne Marina, 850 NE 3rd St,
STE 213, Dania, FL 33004