

PARTY'S OVER — NORTHSTAR YACHTS



Судостроитель: [NORTHSTAR YACHTS](#)

Год постройки: 2006

Модель: Катер для спортивной рыбалки

Цена: **ЦЕНА ЯХТЫ ПО ЗАПРОСУ**

Местонахождение: United States

Длина общая: 80' 0" (24.38m)

Ширина: 23' 0" (7.01m)

Макс. осадка: 5' 6" (1.68m)

Крейс. скорость: 22 Kts. (25 MPH)

Макс. скорость: 27 Kts. (31 MPH)

Купить **PARTY'S OVER — NORTHSTAR YACHTS** а также выбрать подходящую вам яхту из нашего каталога яхт вам поможет опытный яхтенный брокер Андрей Шестаков. На сегодняшний день компания **Shestakov Yacht Sales Inc.** имеет большое количество яхт в собственном списке продаж, а также тесно сотрудничает со всеми крупными яхтенными производителями по всему миру.

Для того чтобы купить яхту **PARTY'S OVER — NORTHSTAR YACHTS** а также проконсультироваться по любому вопросу связанному с покупкой, продажей, чартером яхт позвоните по телефону **+7(918)465-66-44**.

ОГЛАВЛЕНИЕ

ОГЛАВЛЕНИЕ	2
ХАРАКТЕРИСТИКИ	5
Обзор	5
Основная информация	5
Размеры	5
Скорость, вместимость и масса	5
Размещение	6
Корпус и палуба	6
Информация о двигателе	6
ПОДРОБНОЕ ОПИСАНИЕ	7
OVERVIEW	7
MEZZANINE AFT DECK	7
SALON	7
DINING SALON	8
GALLEY	8
MASTER STATEROOM	8
MASTER HEAD	9
VIP STATEROOM	9
GUEST STATEROOMS	9
GUEST HEADS	9
ENCLOSED FLYBRIDGE & LOUNGE (CONVERTS TO CAPTAINS STATEROOM)	9
ENCLOSED FLYBRIDGE AFT DECK	10
FISHING TOWER CONTROLS	10
ELECTRONICS & NAVIGATIONAL EQUIPMENT	11
COCKPIT	11
DECK EQUIPMENT	12
ELECTRICAL SYSTEMS	12
PLUMBING	12

SAFETY & FIRE PROTECTION	13
ENGINE & MECHANICAL EQUIPMENT	13
CONSTRUCTION	14
REMARKS	14
EXCLUSIONS	14
Исключения	14
Отказ от ответственности	14
ФОТОГРАФИИ	16
Dining Salon	16
Salon	16
Galley	16
Pilothouse	16
Master Stateroom	16
Master Stateroom	16
Guest Stateroom	17
Master Head	17
Guest Stateroom	17
VIP Stateroom	17
Custom Staircase to Enclosed Bridge	18
Engine Room Access	18
Engine Room	18
Engine Room - Port	18
Engine Room - Starboard	18
Tender on Foredeck	18
Walkaround Side Decks	19
Davit	19
Fishing Cockpit	19
Cockpit BBQ/Freezer	19
Aft Deck/Mezzanine	19

Aft Deck Built-ins	19
Enclosed Bridge Deck	20
Cockpit	20
Wing Controls Port & Starboard Bridge Deck	20
Enclosed Bridge Deck	20
Tower Buggy Seat	21
Tower Hardtop	21
Looking Aft from Tower	21
Profile	21
Profile	21
Profile	21
Transom Profile	22
LAYOUT	22
КОНТАКТЫ	23
Контактная информация	23
Телефоны	23
Время работы	23
Адрес	23

ХАРАКТЕРИСТИКИ

Обзор

"Party's Over" is a massive 23' beam 4-stateroom Sportfish Convertible yacht, built at the highly-respected Pacific Northwest NORTHSTAR yard in Washington state. She was constructed with the latest technology and materials for her day and is constantly being updated. Featuring NAIAD stabilization, bow thruster, stern thruster, twin generators, full-tournament Sportfish rigging and a complete electronics package including new 2014 systems monitors. Only 1650+hours on her MTU/DDA 2000 HP 16V2000's, with full warranties until December 2015!

Основная информация

Тип судна: Катер для спортивной рыбалки

Модельный год: 2006

Год постройки: 2006

Страна: United States

Верх: Marlin Tower

Открытая палуба мостика: Да

Кубрик: Да

Размеры

Длина общая: 80' 0" (24.38m)

Ширина: 23' 0" (7.01m)

Макс. осадка: 5' 6" (1.68m)

Скорость, вместимость и масса

Крейс. скорость: 22 Kts. (25 MPH)

Макс. скорость: 27 Kts. (31 MPH)

Водоизмещение: 145000 Pounds

Вместимость воды: 400 Gallons

Вместимость сточного бака: 400 Gallons **Объем топливного бака:** 3600 Gallons

Размещение

Всего кают: 4

Всего коек: 5

Спальные места: 8

Всего ком. состава: 6

Корпус и палуба

Материал корпуса: Fiberglass

Материал палубы: Fiberglass

Комплектация корпуса: Modified Deep Vee

Цвет корпуса: White

Дизайнер корпуса: Howard Apollonio

Дизайнер экстерьера: Northstar

Дизайнер интерьера: Northstar

Информация о двигателе

Двигатели: 2

Производитель: MTU

Модель: 16V2000

Тип двигателя: Inboard

Тип топлива: Diesel

ПОДРОБНОЕ ОПИСАНИЕ

OVERVIEW

“Party’s Over” is a massive 23’ beam 4-stateroom Sportfish Convertible yacht, built at the highly-respected Pacific Northwest NORTHSTAR yard in Washington state. She was constructed with the latest technology and materials for her day and is constantly being updated. Featuring NAIAD stabilization, bow thruster, stern thruster, twin generators, full-tournament Sportfish rigging and a complete electronics package including new 2014 systems monitors. Only 1650+hours on her MTU/DDA 2000 HP 16V2000's. This spectacular Sportfish Yacht has just been re-introduced to the market with a \$1Million dollar price reduction!

MEZZANINE AFT DECK

- Aft sliding door; stainless steel frame
- Teak decking
- Stainless steel stairs with teak treads to enclosed flybridge from starboard side of deck
- Teak steps port and starboard to cockpit with step lights
- Molded cabinetry with GE refrigerator, U-Line ice maker and wet sink, port aft side of deckhouse
- Stainless steel deck rail with hand rails going down steps to cockpit
- (8) Stainless steel rod holders on aft rail
- Built-in Halogen deck lighting on overhead
- Large walk-around side decks to fore deck with stainless steel side rails
- Overhead courtesy lights and deck lights forward
- Flood lights
- Stereo speakers in overhead facing toward cockpit

SALON

- Custom Rosewood cabinetry
- Fabrica luxury carpeting
- Custom sculptured spiral staircase leading to the pilothouse on starboard side
- Hunter Douglas silhouette shades
- L-Shaped leather sofa with glass and wood cocktail table
- (2) Occasional chairs
- Majilite headliner with built-in Halogen lighting
- Entertainment center with pop-up 42” flat screen TV with SAT receiver, AM/FM tuner, DVD/CD player receiver and surround sound
- Large stainless steel framed aft sliding door with Granite floor entry
- Day head with Granite floor and vessel sink, starboard aft next to sliding door entryway

DINING SALON

- Elegant natural wood dining table with protective clear finish
- Fabrica luxury carpeting
- Majilite headliner with built-in Halogen lighting
- Majilite wall covering
- Raised coffered ceiling with contemporary triple overhead dining table lighting
- Dining table for eight guests with custom leather-backed chairs
- Art niched alcove at forward end of dining area with overhead lighting

GALLEY

- Custom Rosewood cabinetry
- Majilite headliner with built-in Halogen lighting
- Lightweight Honey-combed Granite countertops
- GE Monogram Series side-by-side refrigerator
- GE Monogram Series 4-Burner flat-top range
- GE Profile Series Advantium 120 microwave
- GE Monogram Series dishwasher
- GE Monogram Series oven
- GE Monogram Series trash compactor
- GE Garbage disposal
- Double under-mount stainless steel sinks with fountain style faucet
- Contemporary custom cork flooring
- Curved Country kitchen style bar with (4) custom swivel bar stools (brushed stainless steel)
- Built-in pantry storage cabinets
- Wall-mounted ICOM VHF/Hailer Command Mic III

MASTER STATEROOM

Located amidships, this full beam stateroom is extremely spacious, light and inviting with Rosewood cabinetry and doors.

- King size berth with custom innerspring mattress and custom headboard
- Fabrica luxury carpeting
- Flat screen 22" Mitsubishi TV with Direct TV SAT receiver, Marantz DVD/CD player
- Roman shades
- Nightstands with lightweight Granite & wall lamps
- Custom built-in sofa to port, dresser/drawers built into starboard
- (2) Cedar-lined wardrobe lockers
- (1) Cedar-lined walk-in closet

MASTER HEAD

- Custom etched shower doors by Permanente Reflections
- Medicine cabinets
- Grohe shower fixtures with designer towel bars & paper holders
- Stainless steel port lights with screens
- Lightweight Granite countertops

VIP STATEROOM

Forward with centerline queen bed and ensuite head; Rosewood cabinets, wardrobe closet, fold-down flat screen TV and stereo system; Fabrica luxury carpet, Majilite headliner with built-in Halogen lighting.

GUEST STATEROOMS

PORT GUEST STATEROOM: Off main companionway has a queen size berth, flip-down flat screen TV and stereo system. En-suite head with Sealand Vacuflush heads, Grohe shower system, stainless steel port lights with screen, Avonite countertop, designer towel bars and paper holders. Fabrica luxury carpet, Majilite headliner with built-in Halogen lighting.

STARBOARD GUEST STATEROOM: Off main companionway leading forward with twin beds, flip-down flat screen TV & stereo system. En-suite head with Sealand Vacuflush heads, Grohe shower system, stainless steel port lights with screen, Avonite countertop, designer towel bars and paper holders. Fabrica luxury carpet, Majilite headliner with built-in Halogen lighting.

GUEST HEADS

- Sealand Vacuflush heads
- Grohe shower system
- Stainless steel port lights with screens
- Avonite countertop
- Designer towel bars and paper holders

ENCLOSED FLYBRIDGE & LOUNGE (CONVERTS TO CAPTAINS STATEROOM)

- Rosewood cabinetry
- Majilite headliner with built-in Halogen lighting
- Pilothouse with side deck wing control docking stations port and starboard

- Hi/Low L-shaped settee to port with storage under settee, converts to captain's berth
- Lightweight Granite hi-low table with storage cabinet underneath
- Day head with Granite floor, vessel sink and Vacuflush head
- Helm station with all electronics custom installed into low profile console
- Ships monitoring system
- Complete electronics package (see list provided)
- Aft Deck of enclosed (pilothouse) Flybridge has bench seating to port with storage underneath
- Stainless steel railing around exterior bridge area
- Wing station controls outside port & starboard
- Access ladder to tower
- (2) Stidd helm seats #500 XL-1X2 (Black)
- Buell dual air horn
- New Searchlight
- Windshield wipers and fresh water washers
- Aft stainless steel framed sliding pilothouse door with Granite floor entry
- Interior staircase to main deck
- Bar with GE refrigerator/icemaker combo under
- Entertainment center with pop-up 26" flat screen TV, AM/FM tuner, DVD/CD player
- Docking station controls of aft railing

ENCLOSED FLYBRIDGE AFT DECK

- Stairs down to Mezzanine deck
- Ladder to aluminum fishing tower
- Side decks with port and starboard wing control stations
- Stainless steel side rails
- Built-in fiberglass settee
- Aft sliding door to Pilothouse; stainless steel framed
- (8) Stainless steel rod holders on aft rail
- Docking station controls on aft railing

FISHING TOWER CONTROLS

- Aluminum fishing tower with fiberglass hardtop
- Fiberglass console with steering and engine controls
- Seat base and backrest with flip-up seat and ladder entry
- Access ladder from enclosed flybridge aft deck
- Weather covers for console and bench seat
- (2) 110v Molded-in flood lights
- Rupp outriggers

ELECTRONICS & NAVIGATIONAL EQUIPMENT

- Garmin (2) touchscreen monitors (new 2014) model 8000
- Furuno 25kW BB radar
- Furuno Navnet BB sounder
- Furuno Navnet BB with GPS receiver
- Nobeltec Admiral Software
- Furuno GP32 receiver
- (2) Furuno Compac 17" daylight display
- CDI Cool Wave Pro
- Robertson AP-50 Autopilot
- (2) Uniden VHF radios with remote mic and hailer
- (2) Shakespeare 23' VHF antenna
- Seatel Fleet One Sat Phone
- Seatel 24" dish; 27" dome TV antenna
- Telemetry converter interface
- Furuno AIS
- Furuno radar with 24" dome
- EPIRB 406 CAT 1 Alert receiver with (4) crew transmitters
- Panasonic telephone system
- Ships monitoring system

COCKPIT

- Teak decks and cover boards
- (8) Rod holders with drains
- Live bait well (160 gallon)
- Built-in tackle center
- Sink
- Under counter storage
- (4) Tuna tubes
- Built-in insulated fish box
- Cockpit controls
- Electric Jenn-Air BBQ grill
- Built-in cold plate freezer box
- Eskimo ice chipper 600lbs. per day
- Fresh and raw water wash-down
- Hot and cold shower remote
- Large boarding transom door
- Access to engine room and Lazarette
- Large self-bailing scuppers
- Underwater lights at transom
- Lazarette wired for dive compressor

- Indirect deck lights
- Dockside pressure water intake

DECK EQUIPMENT

- Kolstrand hydraulic windlass drum-mounted under deck with 50Kg Bruce# anchor with stainless steel bow plate with 500' 5/8" stainless steel cable & 50' chain with Freeman access hatch to chain locker
- Bow pulpit with stainless steel railing
- Nick Jackson 1,500# electron/hydraulic boat davit with power rotation & extension
- 13' Novurania with 60Hp, 4-stroke outboard with VHF radio, depth sounder with additional upgrades
- 50Gal. built-in gas tank for filling tender in foredeck well area
- Mounting bunks for (2) Jet Ski's (No Jet Skis)
- Stainless steel port lights with screens
- Fresh water outlet on foredeck, aft deck
- Deck lighting
- Dock side fresh water inlet
- Canvas custom fitted for tender, tower controls and bench seat

ELECTRICAL SYSTEMS

- Northern Lights 33 Kw shielded generator (3075 Approximate Hours)
- Northern Lights 25 Kw shielded generator (2515 Approximate Hours)
- (4) 8D 24-volt engine start batteries
- (12) 6-volt deep cycle, light weight compact 24-volt house batteries
- 12-volt generator start batteries
- 4000 watt inverter
- 12v/24v DC & 120v/240v AC electrical systems
- Glendenning Cablemaster with 100' of 100 amp 110v/220v shore power cable
- 12v/24v battery chargers with isolation system
- Charles ISO boost system
- Complete bonding system
- Duplex 120v outlets with GFI's
- Internal bonding system with zinc anode protection
- Phone and CTV system with shore hookups
- Alarm system; main engines and bilge alarms

PLUMBING

- Stainless steel fresh water tank with Head Hunter water pump

- (2) 30-gal, dual element stainless steel hot water tank, 240 volt plus heat exchanger from main engines
- Sealand Vacuflush heads with HD commercial grade pump, model #501200
- Integral black water holding tank
- On demand tankless hot water system; 14.4 Kw, 2.6 gpm

SAFETY & FIRE PROTECTION

- 10-person life raft
- (10) Adult and (2) child life jackets
- (2) Life rings
- (6) Mooring and spring lines
- (6) Fenders
- Craftsman tool box and basic kit
- Flare kit
- First aid kit
- (9) Portable fire extinguishers mounted in accessible places
- Smoke detectors monitored by (NorthStar TM) ships monitoring system
- Boat hook
- 8" Bell

ENGINE & MECHANICAL EQUIPMENT

- Twin MTU 16V2000, 2000hp fresh water cooled (Port Approximate Hours: 1650/Stbd. Approximate Hours: 1650)
- ZF Marine gears 2555A, 2.52:1 gears with trolling valves
- Electronic controls in enclosed flybridge, port and starboard docking stations, aft flybridge deck, fishing tower, cockpit and emergency back up controls
- American hydraulic bow and stern thruster, 12" – 40hp with integrated hydraulic system
- CruiseAir chilled water air conditioning with reverse cycle heating
- Automated Delta T engine room ventilation with demisters
- Oil change system; main engines and generators
- 40 gal. lube tank, new and used
- Engine room start/stop panel and gauges
- Jastram hydraulic power steering with rudder angle indicators
- Custom bronze Nibral propellers
- 4" Aquamet 22HS propeller shafts
- Tides dripless shaft and rudder seals
- Custom Dana Marine trim tabs with automatic up when backing down
- Stainless steel exhaust risers with blankets
- Bilge high water alarm system with five pumps
- SeaFire FM200 fire extinguishing system with manual and automatic discharge

- Electric driven emergency bilge pump system
- Sea Pro 511 fuel water separator filters for engines and generators
- Algae-X on both main engines and generators
- Aluminum fuel tanks with sight glass and monitored with ship's monitor system
- Sound abatement: extensive use of Soundown, Nica-Core and other sound abatement materials
- New Watermaker
- Central vacuum system
- Trac – 300 stabilizers with 9 sq.ft. 2011

CONSTRUCTION

Hull, deck and superstructure is hand laid molded fiberglass with vacuum bagged structural coring built to engineering specifications and ABS guidelines; stringers are fiberglass encapsulated foam.

REMARKS

"Party's Over" was built in the Pacific Northwest. She was first commissioned for her current owner in 2010. This quality built yacht, with a 23' beam will cruise in the 22 knot range and 27+ knot max. She is fully stabilized and equipped with hydraulic bow & stern thrusters. "Party's Over" offers all the qualities of a large motoryacht with full sportfishing capabilities. She also offers long range cruising being fully stabilized and carrying 3,600 gallons of fuel. This unique yacht has been recently re-introduced to the market with over a \$1 Million price reduction! Great value; bring offers!

EXCLUSIONS

Exclusions are to include but are not limited to, owner's personal belongings. A detailed list of exclusions to be provided upon written request at time of sale.

Исключения

При продаже яхты исключаются личные вещи владельца.

Отказ от ответственности

Компания предоставляет описание судна или яхты добросовестно, но не может

гарантировать точность этой информации, а также не ручается за техническое состояние. Покупатель должен проинструктировать своих агентов или оценщиков исследовать представленную информацию более подробно, по собственному желанию. Продажа судна или яхты, изменение цены или снятие с продажи будет происходить без предварительного уведомления.

ФОТОГРАФИИ

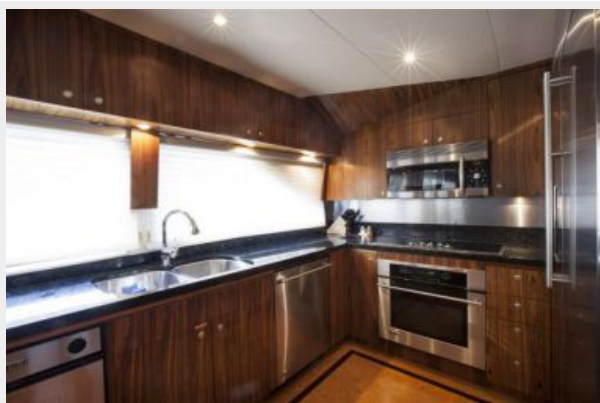
Salon



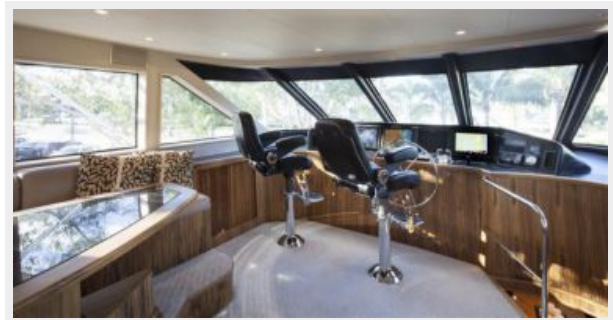
Dining Salon



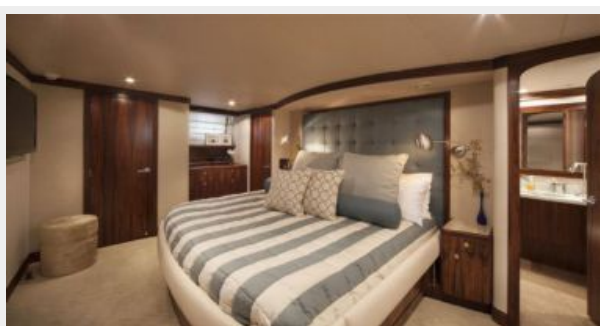
Galley



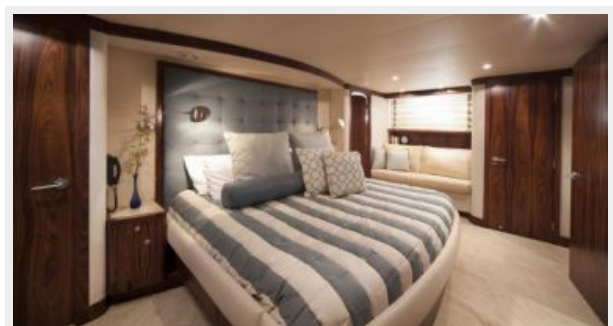
Pilothouse



Master Stateroom



Master Stateroom



Master Head



Guest Stateroom



Guest Stateroom



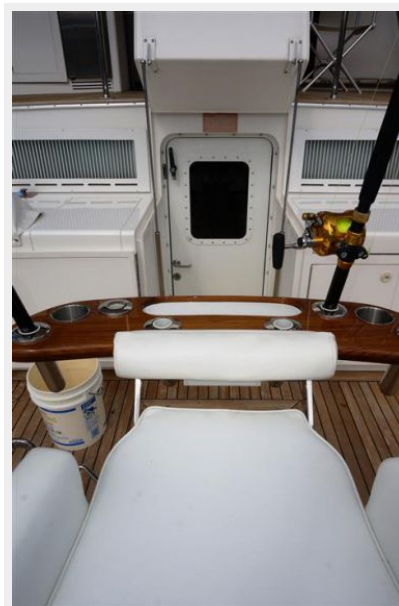
VIP Stateroom



Custom Staircase to Enclosed Bridge



Engine Room Access



Engine Room



Engine Room - Port



Engine Room - Starboard



Tender on Foredeck



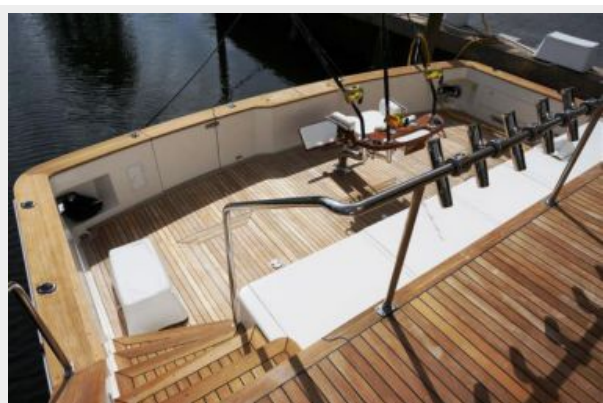
Davit



Walkaround Side Decks



Fishing Cockpit



Cockpit BBQ/Freezer



Aft Deck/Mezzanine



Aft Deck Built-ins



Cockpit



Enclosed Bridge Deck



Wing Controls Port & Starboard Bridge Deck



Enclosed Bridge Deck



Tower Buggy Seat



Tower Hardtop



Looking Aft from Tower



Profile



Profile



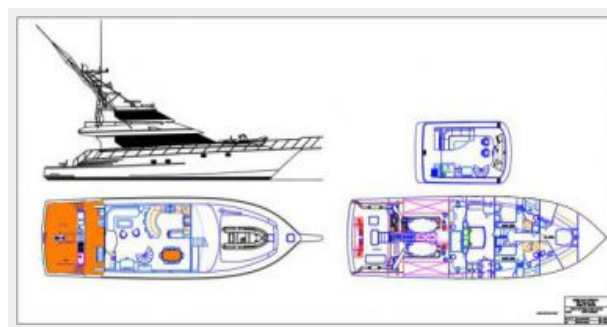
Profile



Transom Profile



LAYOUT



КОНТАКТЫ

Андрей Шестаков (Andrey Shestakov) – ведущий яхтенный брокер отдела продаж яхт и судов компании Shestakov Yacht Sales Inc. Официальный представитель Shestakov Yacht Sales Inc. для русскоговорящих клиентов в центральном офисе компании в Майами/Форт Лодердейл/Флорида/США.

Контактная информация

Email: andrey@shestakovyachtsales.com

Web: shestakovyachtsales.com

Телефоны

Краснодарский край: **+7(918)465-66-44**

США, Майами, Флорида: **+1(954)274-4435**

Время работы

Понедельник – Суббота: **9:00 - 21:00**
EDT

Воскресенье: **Закрето**

Адрес



Harbour Towne Marina, 850 NE 3rd St,
STE 213, Dania, FL 33004