

## CHANGE ORDER II — VIKING



**Судостроитель:** VIKING

**Год постройки:** 2005

**Модель:** Катер для спортивной рыбалки

**Цена:** **ЦЕНА ЯХТЫ ПО ЗАПРОСУ**

**Местонахождение:** United States

**Длина общая:** 61' 0" (18.59m)

**Ширина:** 18' 2" (5.54m)

**Крейс. скорость:** 37 Kts. (43 MPH)

Купить **Change Order II — VIKING** а также выбрать подходящую вам яхту из нашего каталога яхт вам поможет опытный яхтенный брокер Андрей Шестаков. На сегодняшний день компания **Shestakov Yacht Sales Inc.** имеет большое количество яхт в собственном списке продаж, а также тесно сотрудничает со всеми крупными яхтенными производителями по всему миру.

Для того чтобы купить яхту **Change Order II — VIKING** а также проконсультироваться по любому вопросу связанному с покупкой, продажей, чартером яхт позвоните по телефону **+7(918)465-66-44**.

# ОГЛАВЛЕНИЕ

ОГЛАВЛЕНИЕ	2
ХАРАКТЕРИСТИКИ	4
Обзор	4
Основная информация	4
Размеры	4
Скорость, вместимость и масса	5
Размещение	5
Корпус и палуба	5
Информация о двигателе	5
ПОДРОБНОЕ ОПИСАНИЕ	6
Accommodations	6
Salon	6
Galley	6
Dinette	6
Master Stateroom	6
Master Head	7
Forward Guest Stateroom	7
Forward Guest Head	7
Starboard Guest Stateroom	7
Starboard Guest Head	8
Fly Bridge	8
Electronics & Navigational Equipment	8
Deck Equipment	9
Cockpit	9
Electrical System	9
Engine Room & Mechanical Equipment	10
Exclusions	10
Исключения	10

---

Отказ от ответственности	11
ФОТОГРАФИИ	12
КОНТАКТЫ	17
Контактная информация	17
Телефоны	17
Время работы	17
Адрес	17

---

# ХАРАКТЕРИСТИКИ

## Обзор

- Mezzanine
- 16V 2000 power offers 37knot cruise with only 1,360 hours
- Great Lakes boat for 8 years
- Bridge AC/Heat
- Bow thruster

Rare opportunity to own the lowest hour 2005 61 Viking with the powerful MTU 16V2000 power plant. The boat was built for a owner on the Great Lakes and spent most of her life in the fresh water of Lake Erie. The current owner purchased the boat in 2012 and had the boat rigged for fishing by Bluewater's Outerbanks yard and the Viking Service Center.

Although the boat is extremely fast with a 42knot top end, the larger motors allow the captain to cruise the boat 33 knots at an effortless 1,750 RPM's. Offering lower load and longer engine life.

MTU service is up to date and the heat exchangers were serviced September 2014.

- 16V 2000 MTU power with 1,360 hours
- 3 Garmin 7215 plotters (2014)
- Simrad Radar
- Custom third stateroom
- Release Marine fighting chair

## Основная информация

**Тип судна:** Катер для спортивной рыбалки

**Подкатегория:** Convertible

**Модельный год:** 2005

**Год постройки:** 2005

**Страна:** United States

**Открытая палуба мостика:** Да

**Кубрик:** Да

## Размеры

**Длина общая:** 61' 0" (18.59m)

**Ширина:** 18' 2" (5.54m)

## Скорость, вместимость и масса

---

**Крейс. скорость:** 37 Kts. (43 MPH)

**Крейсерская скорость поворота:** 42 Kts.

**Водоизмещение:** 81000 Pounds

**Вместимость воды:** 310 Gallons

**Объем топливного бака:** 1833 Gallons

## Размещение

---

**Всего кают:** 3

**Всего ком. состава:** 3

## Корпус и палуба

---

**Материал корпуса:** Fiberglass

## Информация о двигателе

---

**Производитель:** MTU

**Модель:** 16V 2000

**Тип двигателя:** Inboard

**Тип топлива:** Diesel

---

# ПОДРОБНОЕ ОПИСАНИЕ

---

## Accommodations

---

- Sleeps 6 in 3 staterooms
- 3 guest heads & showers
- Custom third stateroom with accommodations for a couple
- Forward cabin features the center queen layout

## Salon

---

- Bose surround sound system
- 50" TV forward of the dinette
- Silhouette blinds
- Suede sofa w/custom storage below & opening arm for additional storage
- End table w/lamp
- Kenmore ice machine
- Upright electrical panel

## Galley

---

- (4) Refrigerated drawers
- (2) Freezer drawers
- Sharp microwave/convection oven
- Dishwasher
- Pull-out storage forward
- Bamboo hardwood flooring
- Moritz safety systems monitor
- Central vacuum system

## Dinette

---

- Dinette seats 4 comfortably
- Granite dinette table
- Storage access

## Master Stateroom

---

- Queen berth w/storage below is to port amidship

- Bunk hinged to access storage below
- Private access to ensuite head
- All soft goods upgraded including carpet, wallpaper, shams
- Teak drawers & doors throughout
- Double cedar-lined hanging locker
- SMX II AC control
- Overhead hatch w/screen

## Master Head

---

- Corian countertops
- Solid one piece shower door
- Linen closet
- Hardwood sole

## Forward Guest Stateroom

---

- Center line queen berth w/ storage access below
- New bed soft goods 10/2014
- LCD flat screen TV
- Large cedar hanging locker
- Plenty of swinging door & drawer storage
- Upgraded mattresses
- Large deck access hatches for ventilation & natural light

## Forward Guest Head

---

- Private head is aft to starboard
- Stall shower

## Starboard Guest Stateroom

---

- Custom stateroom by Viking offering accommodations for a couple
- LCD flat screen TV
- Stereo w/volume control
- Lights w/dimmers
- Drawer & shelf storage
- Cedar-lined hanging locker
- SMX AC control
- Private access to guest head

---

## Starboard Guest Head

---

- Access head from companionway or guest stateroom
- Bull Nose polished Corian counters & sink
- Bi-folding glass shower door
- Mirrored vanity
- Overhead hatch w/screen

---

## Fly Bridge

---

- Bridge AC/Heat
- Bow thruster
- (2) Stidd helm chairs w/foot rests and 4" pedestal
- Teak helm pod single lever controls
- Power steering
- Trolling valves
- (6) rod aft rail rocket launchers
- Ritchie compass
- Rupp 43' triple spreader riggers
- Rupp center rigger - clear coated
- EZ2CY 3-sided glass w/vents track-to-track panels buffed - some zippers replaced 5/12
- Full rear enclosure
- Flybridge installed w/o exposed fasteners
- MTU backup controls
- Teaser reels US-9R Miyah Epoch with hide-away door
- White, blue & red overhead lights in hardtop
- Qucik release outrigger stand-offs
- Molded in LED navigation lights in hardtop
- Aft/Fwd facing companion seat - stb bench
- Molded in flybridge refrigerator w/dividers
- Molded in 11' cubic ft storage Stainless steel gas springs installed on bench seats

---

## Electronics & Navigational Equipment

---

- 3 Garmin 7215 touch screen plotters
- Garmin CHIRP sounder with flush mounted ducer
- Simrad 25kw radar
- Nav Net Plotter/sounder
- ICOM 602 VHF radio
- Robertson Autopilot
- Trac Vision TV system
- Furuno Rd 30



- AM/FM CD player with amp
- Detroit DDEC electronic controls with backups

## Deck Equipment

---

- Underwater lights
- Flush mounted transducer installation
- 43' Rupp extra duty outriggers
- Freshwater spigot in anchor locker
- Fortress aluminum anchor w/rode & chain
- Spare Veem props

## Cockpit

---

- Release Marine chair w/offset stantion & rocket launcher
- Upgraded Sunbrella fabric on mezzanine cushions
- Custom covers for teak cockpit
- Electric reel plugs - port & starboard Raised mezzanine seating
- Cockpit misters w/4 heads
- Engine room access
- Tackle storage to starboard
- Refrigerated salon step cooler
- Starboard box additionally refrigerated
- Bait freezer to port
- Cockpit fishbox
- In-deck livewell
- Transom door w/ hinged gate
- Stereo speakers
- Indirect lighting
- Overhead lighting
- Starboard side fresh & salt water washdown
- (2) 50amp Glendinning cablemasters
- Phone/TV inlet
- Gaff storage - port
- Transom hawse pipes
- Teak deck
- Teak on steps & mezzanine
- Cockpit deck boxes connected to central drain system

## Electrical System

---

- Onan 21.5kw generator

- 50amp Glendinning cablemasters - port & starboard
- Battery parallel system
- (2) battery chargers
- 24V battery banks
- Battery cut-out switches
- (2) ISO boost transformers
- 24V distribution panel

## Engine Room & Mechanical Equipment

---

- MTU 16V 2000- 2000HP 1,360 hours
- ZF 2500 transmissions
- Onan 21.5kw generator w/sound shield & storage/ toolbox above
- Start & stop buttons
- Manual oil & tachs molded in entrance way
- Dripless shaft logs
- (2) Charles ISO boost 50 boxes
- 110V & 24V overhead lighting
- Sea Star power steering system
- Port & starboard main engine driven power steering pumps
- Emergency port & starboard bilge pumps - engine driven
- Oil change system
- Fuel priming pumps
- Clean-up bilge pump w/hose
- Dual Racor 1000's per main engine
- Heat exchangers cleaned & serviced - 10/14
- Forward fuel tanks transfer pump
- Misters Unlimited mister system
- Water heater
- DC distribution panel
- DC battery switches
- Delta T engine room ventilation system w/fans
- High water alarm

## Exclusions

---

Owner's personal effects.

## Исключения

---

При продаже яхты исключаются личные вещи владельца.

---

## Отказ от ответственности

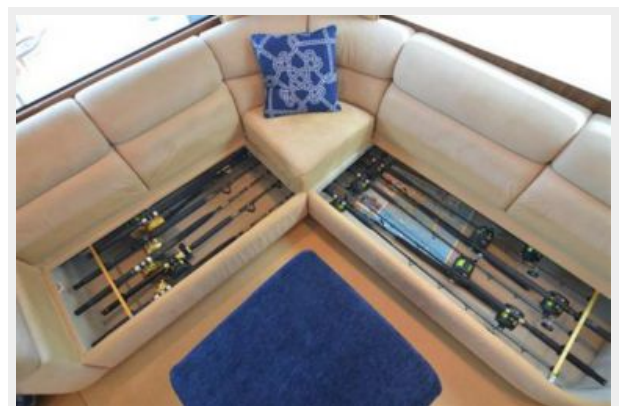
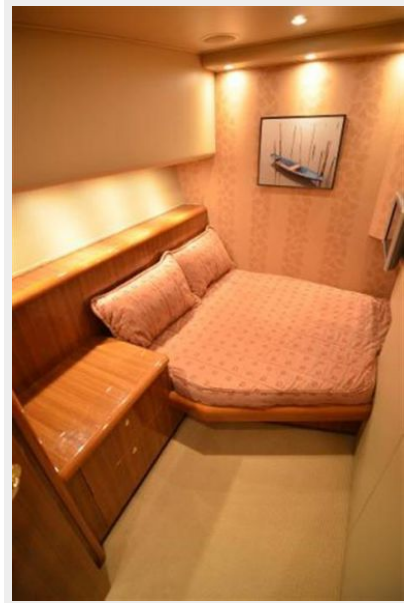
---

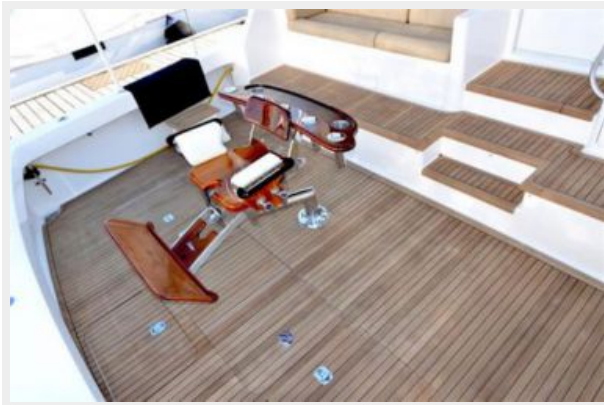
Компания предоставляет описание судна или яхты добросовестно, но не может гарантировать точность этой информации, а также не ручается за техническое состояние. Покупатель должен проинструктировать своих агентов или оценщиков исследовать представленную информацию более подробно, по собственному желанию. Продажа судна или яхты, изменение цены или снятие с продажи будет происходить без предварительного уведомления.

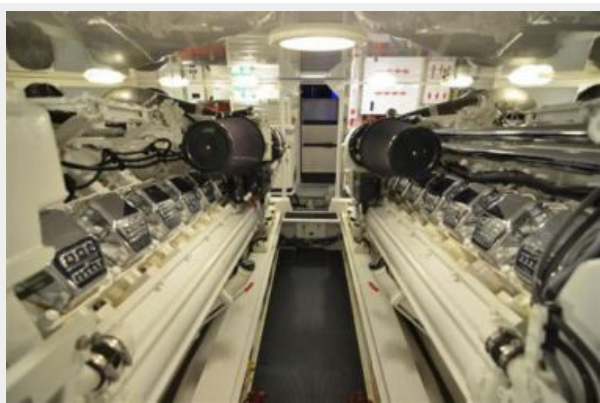
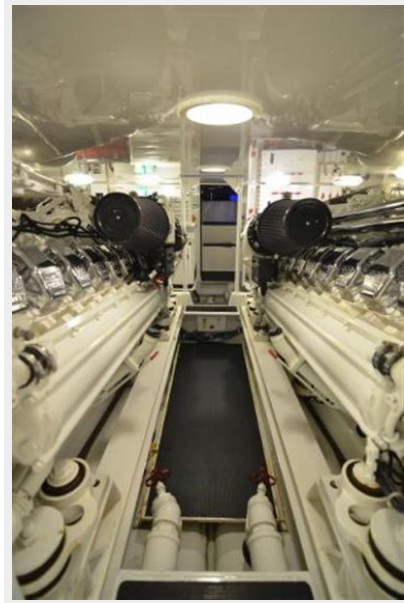
# ФОТОГРАФИИ













# КОНТАКТЫ

---

Андрей Шестаков (Andrey Shestakov) – ведущий яхтенный брокер отдела продаж яхт и судов компании Shestakov Yacht Sales Inc. Официальный представитель Shestakov Yacht Sales Inc. для русскоговорящих клиентов в центральном офисе компании в Майами/Форт Лодердейл/Флорида/США.

## Контактная информация

---

Email: [andrey@shestakovyachtsales.com](mailto:andrey@shestakovyachtsales.com)

Web: [shestakovyachtsales.com](http://shestakovyachtsales.com)

## Телефоны

---

Краснодарский край: **+7(918)465-66-44**

США, Майами, Флорида: **+1(954)274-4435**

## Время работы

---

Понедельник – Суббота: **9:00 - 21:00**  
EDT

Воскресенье: **Закрито**

## Адрес

---



Harbour Towne Marina, 850 NE 3rd St,  
STE 213, Dania, FL 33004