

JESTINE — GRAND BANKS



Builder: GRAND BANKS

Year Built: 2001

Model: Motor Yacht

Price: PRICE ON APPLICATION

Location: United States

LOA: 46' 0" (14.02m)

Beam: 14' 9" (4.50m)

Max Draft: 4' 5" (1.35m)

Cruise Speed: 9 Kts. (10 MPH)

Max Speed: 14 Kts. (16 MPH)

Our experienced yacht broker, Andrey Shestakov, will help you choose and buy a yacht that best suits your needs **JESTINE — GRAND BANKS** from our catalogue. Presently, at Shestakov Yacht Sales Inc., we have a wide variety of yachts available on our sale's list. We also work in close contact with all the big yacht manufacturers from all over the world.

If you would like to buy a yacht **JESTINE — GRAND BANKS** or would like help answering any questions concerning purchasing, selling or chartering a yacht, please call **+1(954)274-4435**

TABLE OF CONTENTS

TABLE OF CONTENTS	2
SPECIFICATIONS	5
Overview	5
Basic Information	5
Dimensions	5
Speed, Capacities and Weight	5
Accommodations	6
Hull and Deck Information	6
Engine Information	6
DETAILED INFORMATION	7
Salon	7
Galley	7
Master Stateroom	7
Guest Stateroom	7
Engine & Mechanical	7
Electronics & Navigation	8
Deck & Hull	8
Remarks	8
Exclusions	9
Exclusions	9
Disclaimer	9
PHOTOS	10
Lower Helm	10
Helm Console	10
Salon Forward	10
Salon View Aft	10
Helm Seat Looking Aft	10
Salon View Aft	10

Icemaker	11
Entertainment Center	11
Grunert Holding Plate Refrigerators w/Freezer	11
Down Galley	11
Propane Cooking	12
V-Berth	12
Ensuite Head	12
V-Berth w/Filler	12
Separate Shower Stall	13
Washer Ddryer	13
Aft Door in Master Stateroom	13
Island Berth in Master Stateroom	13
Separate Head	14
Separate Shower	14
Engine Room	14
Aqua Drive	14
Kabola Hydrdonic Heating System	15
Lofrans Windlass	15
50 Amp Service	15
Flybridge Forward	15
Upper Bridge Settee	15
Tender & Davit	15
Custom Chalks w/Kayak Storage	16
Custom Mast	16
Deck Box Storage	16
Transom Gate	16
Layout	16
CONTACTS	17
Contact details	17

Telephones	17
Office hours	17
Address	17

SPECIFICATIONS

Overview

JESTINE is one of the last 46 Classics built. Her hull number is 46-238. She has the much desired John Deere 6068 300hp engines with less than 500 original hours! She is a down galley arrangement with a 3 zone Kabola hydronic heating system. Original owner and has been kept undercover since new. It's as though the yacht has been stored in a time capsule and now she's available for purchase. Truly a special yacht. She won't last long. **Sistership photo.*

Basic Information

Category: Motor Yacht

Sub Category: Classic

Model Year: 2001

Year Built: 2001

Country: United States

Vessel Top: 2353

Fly Bridge: Yes

Cockpit: Yes

Dimensions

LOA: 46' 0" (14.02m)

LWL: 44' 4" (13.51m)

Beam: 14' 9" (4.50m)

Max Draft: 4' 5" (1.35m)

Speed, Capacities and Weight

Cruise Speed: 9 Kts. (10 MPH)

Cruise Speed RPM: 1800 Kts.

Max Speed: 14 Kts. (16 MPH)

Max Speed RPM: 2600 Kts.

Water Capacity: 276 Gallons

Holding Tank: 30 Gallons

Fuel Capacity: 700 Gallons

Accommodations

Total Cabins: 2

Sleeps: 4

Total Heads: 2

Hull and Deck Information

Hull Material: Fiberglass

Hull Designer: Grand Banks

Engine Information

Engines: 2

Manufacturer: John Deere

Model: 6068

Fuel Type: Diesel

DETAILED INFORMATION

Salon

- Large L shaped settee
- Entertainment center
- Screens on windows
- Breakfast bar
- Helm seat
- Port and starboard side doors
- U-Line Ice Maker

Galley

- Down galley
- Grunert holding plate - Two refrigerator boxes with top loading freezer
- Force Ten 3-burner propane stove
- Sharp Carousel microwave
- Corian counter tops
- Double stainless steel sink

Master Stateroom

- Island Queen berth
- Separate shower and Vacuflush head
- Vacuflush toilets
- Hanging locker
- Aft door leading to cockpit

Guest Stateroom

- V-berth with filler piece
- Ensuite head with Vacuflush toilet and separate shower stall
- Splendid 2000 combo washer dryer
- Chrome reading lamps

Engine & Mechanical

- Northern Lights 8kw genset (137 hrs. 9/30/14)

- Aquadrive engine mounts
- Twin Disc transmission 2:1 ratio
- Panish shift controls
- Kabolola B-12 Hydronic heating system - three zones
- Dual Racor fuel filters
- Bennett trim tabs

Electronics & Navigation

LOWER HELM:

- Raytheon St 60 Speed
- Raytheon St 60 Depth
- Raytheon RL 80C Chart Radar Depth
- Icom IC-M127 VHF
- Simrad AP-22 Autopilot

FLYBRIDGE:

- Raymarine L760 Chart Radar Depth
- Raymarine ST60 Tridata Depth Speed
- Simrad AP-22 Autopilot

Deck & Hull

- Solid fiberglass hull
- Stainless steel hand rails and stanchions
- Teak decks
- Lofrans 1200 W electric windlass
- 30 Kg Bruce plow anchor
- Custom mast
- 11' Rendova hard bottom inflatable with 25hp 4 stroke Yamaha
- 50 amp service
- Custom chocks with kayak storage
- Deck box storage

Remarks

JESTINE is one of the last 46 Classics built. Her hull number is 46-238. She has the much desired John Deere 6068 300hp engines with less than 500 original hours! She is a down galley arrangement with a 3 zone Kabola hydronic heating system. Original owner and has been kept undercover since new. It's as though the yacht has been stored in a time capsule and now

she's available for purchase. Truly a special yacht. She won't last long. **Sistership photo.*

Exclusions

All personal gear; loose items; galley gear; CD's; charts; fishing equipment; tools; spare parts; supplies & items not specifically listed on equipment list specifications sheet.

Exclusions

Owner's personal belongings.

Disclaimer

The Company offers the details of this vessel or yacht in good faith but cannot guarantee or warrant the accuracy of this information nor warrant the condition of the vessel. A buyer should instruct his representatives, agents, or his surveyors, to investigate such details as the buyer desires validated. This vessel or yacht is offered subject to prior sale, price change, or withdrawal without notice.

PHOTOS

Lower Helm



Helm Console



Salon Forward



Salon View Aft



Helm Seat Looking Aft



Salon View Aft



Entertainment Center



Icemaker



Down Galley



**Grunert Holding Plate Refrigerators
w/Freezer**



Propane Cooking



V-Berth



Ensuite Head



V-Berth w/Filler



Separate Shower Stall



Washer Ddryer



Aft Door in Master Stateroom



Island Berth in Master Stateroom



Separate Head



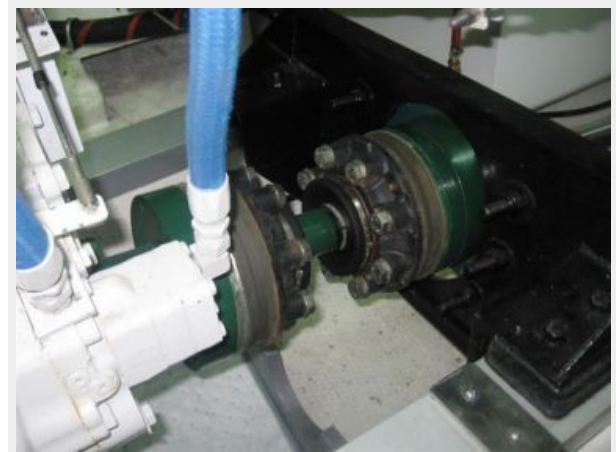
Separate Shower



Engine Room



Aqua Drive



Kabola Hydrdonic Heating System



Lofrans Windlass



50 Amp Service



Flybridge Forward



Upper Bridge Settee



Tender & Davit



Custom Chalks w/Kayak Storage



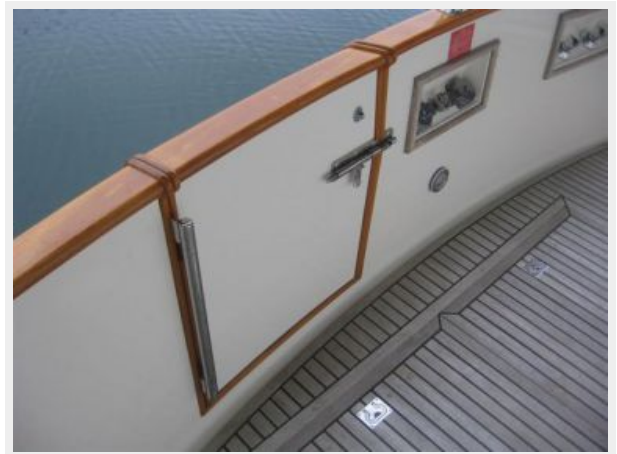
Custom Mast



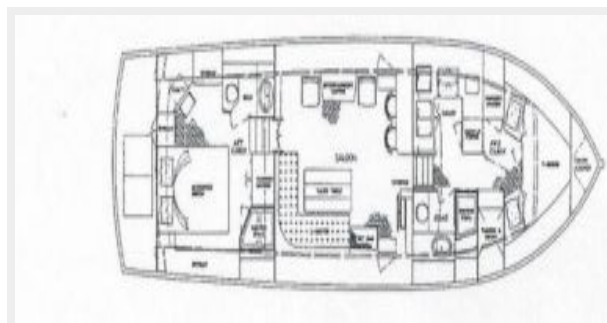
Deck Box Storage



Transom Gate



Layout



CONTACTS

Andrey Shestakov, leading yacht broker of the sales department of Shestakov Yacht Sales Inc. Shestakov Yacht Sales Inc., the official representative of the Miami/Fort Lauderdale FL headquarters.

Contact details

Email: andrey@shestakovyachtsales.com

Web: shestakovyachtsales.com/en/

Telephones

USA: +1(954)274-4435

Office hours

Monday – Saturday: **9:00 - 21:00** EDT

Sunday: **closed**

Address



Harbour Towne Marina, 850 NE 3rd St,
STE 213, Dania, FL 33004