

## CHEERS 46 — AZIMUT



**Судостроитель:** [AZIMUT](#)

**Год постройки:** 2011

**Модель:** Моторная яхта

**Цена:** **ЦЕНА ЯХТЫ ПО ЗАПРОСУ**

**Местонахождение:** United States

**Длина общая:** 116' 0" (35.36m)

**Ширина:** 25' 1" (7.65m)

**Мин. осадка:** 6' 8" (2.03m)

**Крейс. скорость:** 25 Kts. (29 MPH)

**Макс. скорость:** 28 Kts. (32 MPH)

Купить **CHEERS 46 — AZIMUT** а также выбрать подходящую вам яхту из нашего каталога яхт вам поможет опытный яхтенный брокер Андрей Шестаков. На сегодняшний день компания **Shestakov Yacht Sales Inc.** имеет большое количество яхт в собственном списке продаж, а также тесно сотрудничает со всеми крупными яхтенными производителями по всему миру.

Для того чтобы купить яхту **CHEERS 46 — AZIMUT** а также проконсультироваться по любому вопросу связанному с покупкой, продажей, чартером яхт позвоните по телефону **+7(918)465-66-44**.

# ОГЛАВЛЕНИЕ

ОГЛАВЛЕНИЕ	2
ХАРАКТЕРИСТИКИ	5
Основная информация	5
Размеры	5
Скорость, вместимость и масса	5
Размещение	5
Корпус и палуба	6
Информация о двигателе	6
ПОДРОБНОЕ ОПИСАНИЕ	7
ACCOMMODATIONS AND WALKTHROUGH	7
SALON AND DINING AREA	7
GALLEY AND LAUNDRY	7
MEDIA ROOM / OWNER'S LOUNGE - MAIN DECK	8
POWDER ROOM - MAIN DECK	8
MASTER STATEROOM - LOWER DECK	8
ELECTRONICS AND NAVIGATION	9
ENTERTAINMENT SYSTEMS	9
VIP STATEROOMS (2) - Aft	11
GUEST STATEROOMS (2) - Forward	11
CREW QUARTERS	12
DECK AND HULL	12
WHEELHOUSE	13
FLYBRIDGE	13
COCKPIT	14
ELECTRICAL	15
PILOTHOUSE	15
FIRE ALARM AND SAFETY SYSTEMS	16
ENGINE AND MECHANICAL	16

Исключения	17
Отказ от ответственности	17
<b>ФОТОГРАФИИ</b>	<b>18</b>
MAIN SALON	18
MAIN SALON	18
MAIN SALON	18
MAIN DECK	18
BAR	18
BAR	18
DINING AREA	19
DINING AREA	19
DINING AREA	19
COMPANIONWAY	19
MASTER STATEROOM	19
MASTER HEAD	19
MASTER STATEROOM - MAIN DECK	20
MASTER STATEROOM	20
OWNER'S LOUNGE / OFFICE	20
OWNER'S LOUNGE / OFFICE	20
OWNER'S LOUNGE / OFFICE	20
GUEST STATEROOM - Forward	20
GUEST STATEROOM	21
VIP STATEROOM - AFT	21
VIP STATEROOM	21
<b>КОНТАКТЫ</b>	<b>23</b>
Контактная информация	23
Телефоны	23
Время работы	23
Адрес	23



# ХАРАКТЕРИСТИКИ

## Основная информация

Тип судна: Моторная яхта

Подкатегория: Flybridge

Модельный год: 2011

Год постройки: 2011

Страна: United States

## Размеры

Длина общая: 116' 0" (35.36m)

Ширина: 25' 1" (7.65m)

Мин. осадка: 6' 8" (2.03m)

Длина привального бруса: 116' 6"  
(35.51m)

## Скорость, вместимость и масса

Крейс. скорость: 25 Kts. (29 MPH)

Макс. скорость: 28 Kts. (32 MPH)

Чистый вес: 143 Pounds

Вместимость воды: 736 Gallons

Вместимость сточного бака: 370 Gallons Объем топливного бака: 4700 Gallons

## Размещение

Всего кают: 5

Спальные места: 10

Всего ком. состава: 9

Каюта капитана: Да

Койки экипажа: 5

Спальных мест экипажа: 6

Комм. состав экипажа: 3

## Корпус и палуба

---

**Материал корпуса:** Fiberglass

**Дизайнер экстерьера:** Stefano Righini

**Дизайнер интерьера:** Carlo Galeazzi

## Информация о двигателе

---

**Двигатели:** 2

**Производитель:** MTU

**Модель:** 16V 2000 M93

**Тип двигателя:** Inboard

**Тип топлива:** Diesel

---

# ПОДРОБНОЕ ОПИСАНИЕ

---

## ACCOMMODATIONS AND WALKTHROUGH

---

5 STATEROOMS PLUS 1 MEDIA ROOM/OWNER'S LOUNGE. MASTER STATEROOM PLUS 2 VIP STATEROOMS AND 2 GUEST STATEROOMS ON LOWER DECK. CREW QUARTERS FOR 5/6 IN 3 CABINS. TOTAL OF 9 HEADS.

ACCOMMODATIONS DECOR: Cherrywood bulkheads with wenge inserts and fabric panels. Cabinets in cherrywood and wenge. Ceilings in lacquered wood, cherrywood, wenge and fabrics. Fabric headboards and beds trimmed in cherrywood. Floors are carpeted. Roman shades with blackout and curtains on windows

## SALON AND DINING AREA

---

DÉCOR: Ceilings in lacquered wood and fabrics, with central paneling in cherrywood and wenge. Bulkheads in cherrywood and fabrics. Bow bulkhead with beveled mirror in the middle.

- Floors are carpeted with cherrywood border
- Roman shades and decorative curtains on windows
- Bar cabinet on port side with icemaker, wine-cooler and sink
- Bar top in Nero Marquina marble with glass backsplash with s/s handrails and footrests
- Bottle and glass holder cabinet
- Dining area on bow of salon, with rectangular cherrywood and wenge wood table for 12 guests
- 12 Leather dining chairs – two with armrests
- Cabinet for storage of dishes, glasses and cutlery on side of dining area
- Three stools
- (4) Sofas on starboard side
- (4) Coffee tables in cherrywood, wenge, stainless steel with glass tops
- TV Cabinet on port side for a 40" plasma TV
- Dishware, glassware and cutlery for 12 people

Access to pantry from port bow side of salon

## GALLEY AND LAUNDRY

---

The Galley features stainless steel countertops, cherrywood bulkheads, stainless steel backsplash behind cooktop, Sofa in leather, cherrywood pantry table, Amtico floors, and wooden blinds

- Gaggenau electric 5 element stovetop with Miele hood
- Gaggenau Oven
- Large sink
- Deep freezer X 2
- Refrigerator X 3
- Wine fridge (60 bottles)
- Beers refrigerator/freezer X 1
- Ice makers X 3
- Drink refrigerators x 4
- Heating
- Dishwasher
- Washing machine X 2
- Clothes Dryer X 2
- Cigar Humidor
- Gaggenau microwave oven
- Air conditioning
- Trash compactor

---

## **MEDIA ROOM / OWNER'S LOUNGE - MAIN DECK**

---

Wide relaxing and entertainment area on bow of main deck in cherrywood and wenge. Ceiling is lacquered wood and fabrics with a central panel in cherrywood and wenge. Floors are carpeted.

- (2) Fabric sofas: one can be converted into a queen bed
- Cabinet and ottoman
- Computer desk with chair
- Cabinet for a 40" plasma TV

---

## **POWDER ROOM - MAIN DECK**

---

- Jets Head, Sink, Cabinet and mirror
- Custom rain shower in marble with lacquered wood bulkhead and glass door
- Cherrywood floor with marble border

---

## **MASTER STATEROOM - LOWER DECK**

---

Located forward of the engine room is the Master Suite

- King bed with latex mattress, bedspread & pillows, sheets & linens and large storage area underneath
- Two nightstands with lamps
- Indirect lighting on ceiling with recessed neon lights



- Two armchairs with coffee table in cherry wood and wenge wood
- Drawers and vanity
- Safe Box
- Bar cabinet with fridge and storage
- Open dressing area on aft port side with ceiling spotlights, opening porthole, hanging closet with shelves, shoe rack and mirrors on inside of doors
- TV cabinet with hi-lo mechanism
- Ensuite master head with Jets toilet, Bidet, marble topped sink, Jacuzzi tub, Shower with central rain shower, bench, glass door Bisazza mosaic bulkheads
- Drapes and Carpet

---

## ELECTRONICS AND NAVIGATION

---

- Log-speedometer
- Autopilot
- Navigation center
- Wind speed and direction
- Plotter X 2
- VHF X 2
- Depth sounder
- Radar X 2
- Compass
- GPS X 2
- Raymarine speed transducer
- Raymarine depth transducer

### Audio Visual Equipment:

- Integrated Crestron Audio Visual system
- Apple TV in ten locations
- Apple iPad and iPod remotes for system operation
- DVD players and Blu-ray players in ten locations
- KVH HD7 Satellite television dish
- Movie Theater Room – 3D TV

---

## ENTERTAINMENT SYSTEMS

---

### Master:

32" LED TV Sharp

Blue Ray DVD player Sharp

Bose Lifestyle V35

Hi-Lo mechanism for TV

**VIPS: (2)**

22" LED TV Sharp

CD/DVD player

Two Sony loudspeakers

**GUEST: (2)**

19" LCD TV Sharp

CE/DVD Player

Two Sony loudspeakers

**Captain:**

19" LCD TV Sharp

Two Sony loudspeakers

**Crew: (2)**

Sony CD Player

Two Sony loudspeakers

**Galley/Crew Mess:**

19" LCD TV Sharp

Two Sony loudspeakers

**Utility room:**

40" LD TV Sharp

Blue Ray DVD player

Bose Lifestyle

**Salon:**

40" LD TV Sharp

Blue Ray DVD player

Bose Lifestyle

Swiveling system for TV

**Aft Cockpit:** (2) Fusion loudspeakers linked to salon stereo system through a Bose amplifier with a Bose remote control

**Bow Area:** (2) Fusion loudspeakers linked to salon stereo system through an independent Bose amplifier with a Bose remote control

**Flybridge:** (2) Fusion loudspeakers linked to salon stereo system through an independent Bose amplifier with a Bose remote control

---

## VIP STATEROOMS (2) - Aft

---

Access to two identical VIP Staterooms and two identical Guest Staterooms is from the lower deck foyer through the staircase from main deck.

- Queen beds with latex mattress, bedspread and pillows and large storage area underneath bed
- Two nightstands with lamps
- Indirect lighting on ceiling with recessed neon lights
- Armchair on outboard side
- Walk-in hanging closet with drawers and mirror
- Vanity in cherrywood and wenge wood

VIP HEADS: (2)

- Jets head
- Sink with marble top
- Cabinets, shelves and mirror
- Shower with rain shower, glass door, lacquered bulkheads, and bench
- One oval porthole

---

## GUEST STATEROOMS (2) - Forward

---

- 1 Double bed plus upper and lower twins with latex mattresses, bedspreads and pillows
- Nightstand in cherry wood and wenge wood with lamp
- Indirect lighting with recessed neon lights

- One big oval porthole
- Wardrobe with hanging bar, light and mirror
- Cabinets
- Drawers under the outboard bed and large storage area under inboard bed

#### Guest Heads (2):

- Jets head
- Sink with marble top
- Cabinets and mirror
- Shower with rain shower, glass door, lqccquered bulkheads, and bench
- One large oval porthole

## CREW QUARTERS

---

Access to crew quarters is through the staircase from galley.

Crew mess with cherrywood table and C-shaped settee

- Miele washer
- Miele Dryer
- Cabinets

#### Captain's Cabin:

- Queen bed with drawers underneath
- Wardrobe
- Cabinets
- Spotlights
- Opening porthole
- Jets Head
- Sink and shower

#### Crew Cabins: (2)

- Bunk beds with drawers under bottom bed
- Wardrobe, cabinets, spotlights, opening porthole
- Jets Head
- Sink and Shower

## DECK AND HULL

---

The structural project of the hull was carried out according to R.I.N.A. rules. Azimut offers a 5 year warranty against osmosis.

The peculiar shape of the aft swim platform and transom has been designed to integrate into the hull, a garage where it is possible to store a tender and two jet skis.

The full-size door of the garage on the transom is operated hydraulically and converts into a wide teak swim platform with small cleats for tender. An expanding gasket connected with a compressor placed in the garage, guarantees the watertight safety when the aft transom-door is closed.

- (2) Electric canopies on flybridge
- Total Liferaft Capacity: 2 X 12-man
- Electric windlass
- Fly bridge Jacuzzi
- (2) Posidonia steel anchors with steel chains
- Built-in stainless steel bow protections
- (2) 4000W, 220V, anchor winches on bow
- (2) 2200W, 220V, mooring winches in aft cockpit
- Swim platform and flybridge showers
- Electro-hydraulic retractable gangway in s/s/ and teak, stored inside the first step of the starboard staircase
- Manual s/s /swim ladder
- Shore power in teak, TV and phone connection in a locker on starboard side of transom
- Freshwater intake, shower and freshwater connection in a locker on the portside transom
- Sunbathing cushions on bow on the superstructure
- Marquipt side boarding gangway deployable at four locations
- Teak decking on cockpit, side decks and flybridge
- **Tender:** Williams 445 Turbojet – Serviced Fall 2014
- **Jet ski.** Yamaha waverunner 1800cc

## WHEELHOUSE

---

Varnished teak floor and staircase steps in wheelhouse, cherrywood bulkheads, leather console and steel side panels, leather helmseat and L-shaped sofa with teak table.

- Additional controls in wheelhouse (search light, fire extinguisher pump and anchor winch)
- 220 V generators electrical system control repeater
- Chart top with light
- Staircase to flybridge

## FLYBRIDGE

---

The wide flybridge is accessed through an internal staircase in the wheelhouse and external staircase in the aft cockpit.

- Large curved cabinet in cockpit with fridge and icemaker
- Ice maker in the flybridge cabinet
- Upgraded barbecue on flybridge
- Jacuzzi tub on flybridge
- Windscreen in steel and Lexan
- Two-seat helm seat (port side)
- Fiberglass sofa with cushion on bow starboard side with teak coffee table
- Bar furniture with sink, fridge and icemaker on portside.
- Countertop in Corian. Bar top in teak.
- (3) Swiveling barstools in stainless steel with backrests
- Electric stainless steel barbecue cabinet on port side
- C-Shaped dining sofa
- Extendable table in teak seats 12 people
- Five teak folding chairs
- Waterjet tub integrated into a fiberglass cabinet, placed in the middle of seats and sunbathing area
- Retractable shower
- Fiberglass arch with navigation lights, antennas and MARCO PW3 horn and two 116" logos (one each side)
- NTAV searchlight placed on bow of the flybridge above the wheelhouse
- Two electric bimini tops integrated into the fiberglass arch structure, opening toward aft and bow
- Watertight lights
- Stainless steel handrails around aft area of flybridge
- Teak deck flooring
- Covers for the flybridge console, teak table, sofas and sunpad
- FLYBRIDGE ELECTRONICS:
  - 12" Raymarine color display E120W widescreen
  - Multifunction Raymarine ST70
  - Raymarine ST70 analogue rudder display
  - Raymarine ST70 autopilot
  - VHF Raymarine Ray 240E repeater
  - Pathfinder open array antenna HD48" 4kw
  - Raymarine VHF antenna
  - Raystar GPS antenna 125 WAAS/EGNOS

## COCKPIT

- Teak decks
- Staircase with teak steps and s/s/ handrail from aft cockpit to flybridge, port side
- Built-in fiberglass sofa with cushions
- Fixed teak table with stainless steel bases in front of the sofa to accommodate 12 people
- S/S handrails all around the sofa
- Control panel placed inside the portside handrail to control:gangway,garage door,launching and recovering systems for tender, and lights
- Two storage lockers, one each side of the aft cockpit sofa
- (7) Teak folding chairs
- Slightly curved s/s and tempered glass door for access to the salon
- Built-in furniture equipped with sink,icemaker and fridge in the cockpit, starboard side
- Two side boarding gates on the bulwark
- S/S gates port and starboard leading to stairs
- Halogen ceiling lights
- Covers for sofa and table

---

## ELECTRICAL

---

- 220V a.c. 3-phase, 60 Hz for power circuits
- 24V d.c. for lighting, signals, emergency lighting and electronics
- Shore Power
- Generator – Kohler 65 kW Port (2997 hrs)
- Generator – Kohler 65 kW Starboard (2898 hours)
- Group of 24V gel batteries for lighting, signaling, low power users
- Group of 24V leaded batteries for main engines starter
- Two groups of 12V leaded batteries for generators starter
- Group of 24V gel batteries for electronics, intercom and emergency
- Group of 24V leaded batteries for MTU electronics
- Mastervolt battery chargers for service batteries, emergency batteries, MTU electronics batteries, main engine starter batteries and for generator batteries
- Shore power transformers and inlets X 2
- Alternator on each main engine charging main engines starter sets
- Alternator on each generator charging generator starters batteries set
- Phone jack outlets in each stateroom, pilothouse, galley, salon, crew cabins with wiring run to a central location in the pilothouse
- Dimmers for internal lights (heads and galley excluded)
- Electrical Circuit: 110V sockets

---

## PILOTHOUSE

---

The Pilothouse Console Includes: Steering wheel, Main engines controls, Main engines and reversing gear gauges, Instruments for navigation, Bow thruster controls, Forward anchor winch

control, navigation lights controls, horn controls, Electric search light controls, Fire extinguisher pump control, Trim tabs control/indicator, Intercom connecting wheelhouse, main deck (aft and bow) and engine room.

Touchscreen with controls for monitoring and systems Electronics:

- 14" RAYMARINE COLOR DISPLAY E140W WIDESCREEEN
- 12" RAYMARINE COLOR DISPLAY E20W WIDESCREEEN
- 12" RAYMARINE COLOR DISPLAY E120W WIDESCREEEN
- MULTIFUNCTION RAYMARINE ST70
- RAYMARINE ST70 ANALOGUE RUDDER DISPLAY.
- RAYMARINE ST70 AUTOPILOT
- RAYMARINE SPX-SOL UNIT
- VHF RAYMARINE RAY 240E DSC CLASS D

## FIRE ALARM AND SAFETY SYSTEMS

---

- Portable extinguishers with powder and/or CO2 in all areas of the yacht
- CO2 centralized system to act on fire devices in engine room, safety valves on engines and generators, acoustic alarm system and gates to shut off venting conduits.
- Fire alarms connected with sensors placed in various areas of the yachts
- Fire alarm connected with gasoline vapor sensor in aft garage
- Seawater fire hose

## ENGINE AND MECHANICAL

---

Main Engines: Twin MTU 16V 2000 M93 2400 HP Diesel Engines

- ZF 3060 V, transmission
- Tropical CRuisair air conditioning 250,000 BTU
- Centralized air extraction system for heads
- TRAC Zero speed stabilizers
- Bow Thruster – Hydraulic 65 Kw
- Hamman Sewage treatment plant (USCG certified)
- Watermaker predisposition
- Double Racor filter for main engines
- Nibral propellers



---

## Исключения

---

При продаже яхты исключаются личные вещи владельца.

---

## Отказ от ответственности

---

Компания предоставляет описание судна или яхты добросовестно, но не может гарантировать точность этой информации, а также не ручается за техническое состояние. Покупатель должен проинструктировать своих агентов или оценщиков исследовать представленную информацию более подробно, по собственному желанию. Продажа судна или яхты, изменение цены или снятие с продажи будет происходить без предварительного уведомления.

# ФОТОГРАФИИ

**MAIN SALON**



**MAIN SALON**



**MAIN SALON**



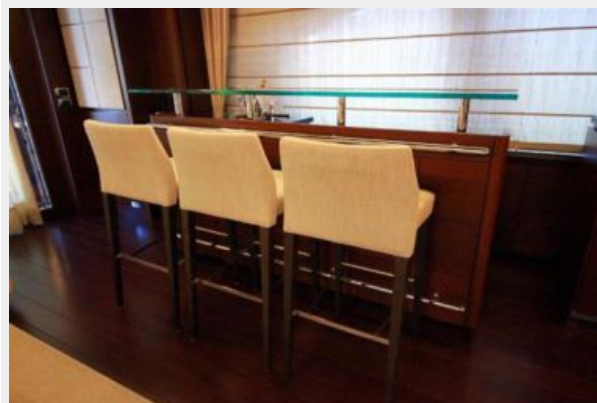
**MAIN DECK**



**BAR**



**BAR**



**DINING AREA**



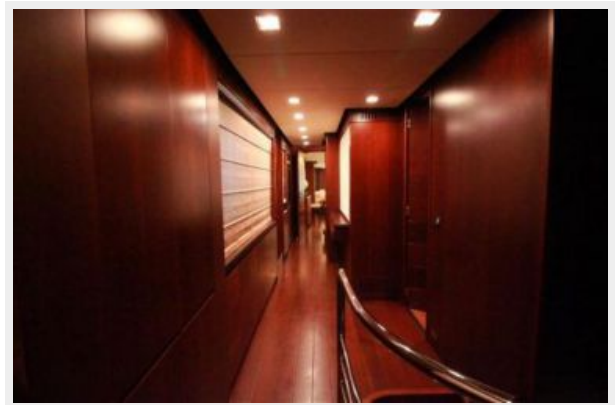
**DINING AREA**



**DINING AREA**



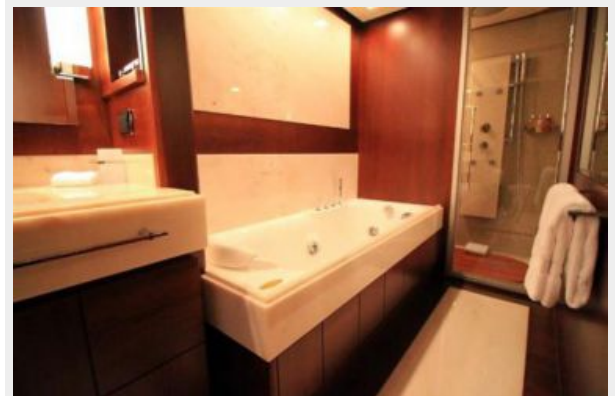
**COMPANIONWAY**



**MASTER STATEROOM**



**MASTER HEAD**



**MASTER STATEROOM**



**MASTER STATEROOM - MAIN DECK**



**OWNER'S LOUNGE / OFFICE**



**OWNER'S LOUNGE / OFFICE**



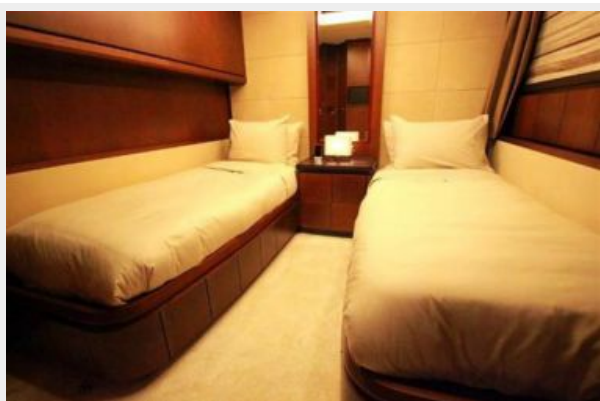
**OWNER'S LOUNGE / OFFICE**



**GUEST STATEROOM - Forward**



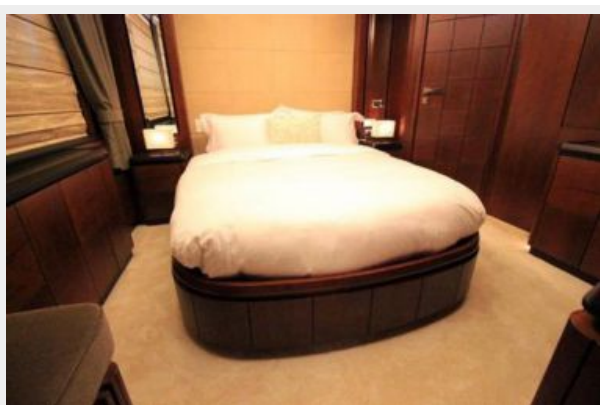
### GUEST STATEROOM



### VIP STATEROOM - AFT



### VIP STATEROOM





# КОНТАКТЫ

---

Андрей Шестаков (Andrey Shestakov) – ведущий яхтенный брокер отдела продаж яхт и судов компании Shestakov Yacht Sales Inc. Официальный представитель Shestakov Yacht Sales Inc. для русскоговорящих клиентов в центральном офисе компании в Майами/Форт Лодердейл/Флорида/США.

## Контактная информация

---

Email: [andrey@shestakovyachtsales.com](mailto:andrey@shestakovyachtsales.com)

Web: [shestakovyachtsales.com](http://shestakovyachtsales.com)

## Телефоны

---

Краснодарский край: **+7(918)465-66-44**

США, Майами, Флорида: **+1(954)274-4435**

## Время работы

---

Понедельник – Суббота: **9:00 - 21:00**  
EDT

Воскресенье: **Закрето**

## Адрес

---



Harbour Towne Marina, 850 NE 3rd St,  
STE 213, Dania, FL 33004