

JUST A VACATION — AZIMUT



Builder: [AZIMUT](#)

Year Built: 2007

Model: Motor Yacht

Price: PRICE ON APPLICATION

Location: United States

LOA: 85' 0" (25.91m)

Beam: 22' 0" (6.71m)

Max Draft: 5' 7" (1.70m)

Our experienced yacht broker, Andrey Shestakov, will help you choose and buy a yacht that best suits your needs **Just A Vacation — AZIMUT** from our catalogue. Presently, at Shestakov Yacht Sales Inc., we have a wide variety of yachts available on our sale's list. We also work in close contact with all the big yacht manufacturers from all over the world.

If you would like to buy a yacht **Just A Vacation — AZIMUT** or would like help answering any questions concerning purchasing, selling or chartering a yacht, please call **+1(954)274-4435**

TABLE OF CONTENTS

TABLE OF CONTENTS	2
SPECIFICATIONS	6
Overview	6
Basic Information	6
Dimensions	6
Speed, Capacities and Weight	7
Accommodations	7
Hull and Deck Information	7
Engine Information	7
DETAILED INFORMATION	8
Broker Comments	8
Manufacturer Provided Description	8
Aft Deck	8
Salon	9
Day Head	10
Galley	10
Dining Salon	10
Lower Helm / Pilothouse	11
Aft Companionway	12
Master Cabin w/ Private Access	12
Forward Companionway	13
VIP Guest Cabin	13
Under Bow Stateroom Sole	14
Port Guest Cabin	14
Starboard Guest Cabin	15
Crew Quarters / Companionway / Lounge	15
Rudder Compartment	17
Bottom	17

Fly Bridge	18
Decks and Superstructure	19
Engine Room & Machinery	20
Exclusions	21
Disclaimer	21
PHOTOS	22
Bow View	22
Profile	22
Aft View	22
Aft View	22
Foredeck	23
Foredeck	23
FB Helm	23
Flybridge	23
FB Bar	23
Flybridge	23
Flybridge	24
Flybridge	24
FB Helm	24
Jacuzzi	24
FB Bar	25
FB Bar	25
Sidedeck	25
Aft Deck	25
Aft Deck	26
Aft Deck	26
Passerelle	26
Crew Quarters	26
Crew Head	27

Engine Room	27
Engine Room	27
Laundry	28
Flybridge	28
Salon	28
Salon	28
Salon TV	29
Salon	29
Dinette	29
Galley	29
Galley	29
Pilothouse	29
Pilothouse	30
VIP	30
VIP Head	30
VIP	30
Master	30
Master	30
Master Vanity	31
Master Head	31
Master Head	31
Port Guest Stateroom	31
Starboard Guest Head	32
Starboard Guest Stateroom	32
Swim Platform	32
Salon	32
CONTACTS	33
Contact details	33
Telephones	33

Office hours	33
Address	33

SPECIFICATIONS

Overview

Just-A-Vacation's original owner just spent a bundle on the following maintenance and improvements:

- Fresh bottom paint
- Multi-step hull and superstructure compound and waxing
- New cushions on the aft deck, flybridge and foredeck seating areas
- New carpeting throughout all staterooms and the salon.

Upgrades include:

- Atlas Shorepower converter make this a world-class capable fast Motoryacht.
- Surveyor / Project manager oversaw the entire build process.
- Captain maintained since new by a world-class captain with a military background.
- Excellent mechanical and cosmetic condition.

Just-A Vacation's owner is **EXTREMELY MOTIVATED!** Don't miss an opportunity to get a great buy on an 85 Azimut. Call me directly for more info and for the inside scoop.

Basic Information

Category: Motor Yacht

Model Year: 2007

Year Built: 2007

Country: United States

Dimensions

LOA: 85' 0" (25.91m)

Beam: 22' 0" (6.71m)

Max Draft: 5' 7" (1.70m)

Speed, Capacities and Weight

Displacement: 187392 Pounds

Water Capacity: 465 Gallons

Fuel Capacity: 2300 Gallons

Accommodations

Total Cabins: 4

Total Berths: 5

Hull and Deck Information

Hull Material: Fiberglass

Engine Information

Engines: 2

Manufacturer: Caterpillar

Model: C32 A Cert

Engine Type: Inboard

DETAILED INFORMATION

Broker Comments

Just-A-Vacation's original owner just spent a bundle on the following maintenance and improvements:

- Fresh bottom paint
- Multi-step hull and superstructure compound and waxing
- New cushions on the aft deck, flybridge and foredeck seating areas
- New carpeting throughout all staterooms and the saloon.

Upgrades include:

- Atlas Shorepower converter make this a world-class capable Fast Motoryacht.
- Surveyor/Project manager oversaw the entire build process.
- Captain maintained since new by a world-class captain with a military background=Excellent mechanical and cosmetic condition.

Just-A Vacation's owner is **EXTREMELY MOTIVATED!** Don't miss an opportunity to get a great buy on an 85 Azimut. Call me directly for more info and for the inside scoop.

Manufacturer Provided Description

A Grand Tourer of the sea; stately, luxurious and panoramic: a floating home from home. This is the concept that was elaborated by Stefano Righini and Carlo Galeazzi together with Viareggio's Azimut team. A concept that evolved into a just over 85 feet long and nearly 22 feet wide villa on the sea. Ample windows on both decks, dilated volume and an original layout are only a few of the many assets on the 85 fly. This is the Owner version, with a large full beam suite amidships, private access to the lounge and two separate en-suite bathrooms.

Aft Deck

- Fiberglass overhead with recessed lights, two stereo speakers, and intercom
- Stainless steel leads, port and starboard
- Teak over fiberglass deck
- Lofrans warping windlass, port and starboard
- Stern bollard, port and starboard
- Stainless steel rail and stanchions, aft on bulwarks
- Stainless steel gates to swim platform, port and starboard

- Port and starboard stainless steel rail and stanchions on bulwarks
- Water fill, port
- 110-volt GFI outlet
- Port and starboard closed circuit television cameras
- Two stainless steel aft supports to overhead
- Curved bench seat, aft, with new cushions 2014
- Two single pedestal mounted tables, forward u-shaped seating with deck chairs
- Hatch/stairs/passarelle controls, starboard aft
- Shelved locker, port
- Stainless steel sliding door to salon, forward
- Nine steps to flybridge deck
- Drink box, port
- Twenty-four-inch life ring, port and starboard
- Revere 12-person life raft and Hydrostatic release
- Nautical Structures Euro 1275 EX Davit
- Opacmare passarelle w/ new control handle
- Deck courtesy lights
- Seven step MarQuipt tide ladder
- Deck drains, port and starboard, aft

Salon

- Entrance via aft deck dual stainless steel sliding doors with drapes
- Carpeted sole with canvas runner. New carpet 2014
- Ultra suede paneled overhead with recessed cherry feature
- Recessed soffit with rope lighting overhead
- Recessed overhead lights
- Air handlers, port, fore and aft
- U-Shaped leather/cloth sofa, port with pull out bed
- Window drop curtains and drape
- Two chairs, starboard
- Cruisair SMX IR air conditioning control panel
- Artwork partition to the dining salon
- Valence rope lighting
- Onkyo AV receiver TX-NR509
- HiFi works multi (3) zone amp
- Memorex Blu Ray player
- Seven Speakers and sub woofer surround sound
- 42" NEC flat panel television on electric lift
- Direct TV receiver

Day Head

- Starboard aft of galley and just forward of salon area
- Cherry sole
- Vinyl paneling overhead with recessed lights
- Tecma toilet
- Angiosperm trim, paneling and molding
- Vanity with porcelain sink with hot and cold-water faucet, mirror and storage under
- 110-volt GFI outlet
- Exhaust blower
- Window with drop shade

Galley

- Entrance is starboard forward of salon
- Cherry sole
- 110-volt GFI outlet
- Teak paneling and trim
- Overhead panels with recessed lights
- Starlight granite counter tops
- Two stainless steel sinks with single-lever hot/cold water faucet
- Sub-Zero refrigerator-1632-52- Huge
- Scotsman-circulating water ice maker
- Gaggeneau 4-burner stove top with overhead work light and exhaust blower that exits overboard
- Gaggeneau oven
- Cuisinart toaster oven
- GE microwave
- Brew Express coffee maker
- Stainless steel back splash
- Fisher Paykel (2) drawer dishwasher
- Watertight door to starboard side deck
- Built-in storage cabinets
- Pass-through to dining salon with tambour door on track and with three overhead lights
- Pass-through to helm dinette area with tambour door
- Cruisair SMX IR air conditioning controls

Dining Salon

- Carpeted sole with canvas runner- New 11/2014
- Recessed overhead feature with cherry inlaid wood
- Vinyl headliner with recessed lights and wood recess

- Window drop shades; valence rope lighting
- Sub-Zero wine cooler
- Matte cherry wood table with four chairs plus fold out leaves for four = eight total
- Backlit glass dolphin sculpture separating salon from dining area
- Cruisair air conditioning control panel
- Shelved lockers, port
- Stairwell to accommodation deck to starboard

Lower Helm / Pilothouse

- One step up from galley companionway
- Laminate sole
- Cloth overhead with overhead lights
- Helm chair (electrically controlled)
- White Star compass
- American Hydraulic bow and stern thruster control panel
- ACR searchlight control panel
- ZF electronic engine controls
- Port and starboard CGT touch screen displays to engines
- Custom steering wheel
- Trac stabilizer control panel
- Trim position indicator and control panel
- Rudder angle indicator
- Smart Power Management screen to central hydraulics
- KVH Via satellite broadband antenna controller unit
- KVH Tracphone
- Panasonic CCTV control panel
- Raymarine Ray 240 VHF radio
- Raymarine ST 290 autopilot
- Raymarine ST290 wind speed and direction display
- Raymarine ST290 depth display
- Raymarine ST290 rudder angle indicator
- Intercom control panel
- Dinette, port, with curved bench seating, storage, and cherry wood top table
- Two Caterpillar engine parameter displays
- Air conditioning duct fore and aft
- Cruisair SMX IR air conditioning control panel
- Electrical panel for 24-V.D.C and 230-V.A.C.
- 3-lb dry chemical fire extinguisher, tag February 2012
- Builders plaque
- ACR E.P.I.R.B battery expiration June 2001, no registration sticker
- Ship's alarm and pump controls
- VEI LCD monitor with Nobeltec charting software

- Azimut alarm, monitoring, and touchscreen controller to:
- Navigation systems
- Fans
- 220-volt 24-volt systems
- Tanks
- Bilges
- Smoke detection
- Information screens
- Raymarine E120 chart plotter/radar/CCTV displays

Aft Companionway

- Nine carpeted steps from the salon to the master stateroom
- Vinyl overhead with two flush mounted lights
- Electrical panel, outboard
- Fabric walls
- Custom linen locker, outboard
- Alcove with light, storage, decor art and brass railing
- Cherry paneling trim and molding

Master Cabin w/ Private Access

- King-sized berth, centerline, with underneath storage that lifts up on hinges and springs
- Built-in nightstand with drawer storage
- Porthole, port and starboard outboard, with drop shades
- Large picture windows port and starboard
- Is separate with an Aft private entrance way aft the salon
- Carpeted sole- New 11/2014
- Suede overhead with indirect recessed lighting, custom cherry wood
- Two recessed reading lights on soffit above head of bed
- Built-in vanity desk, starboard, with storage and lif-up vanity mirror
- Sharp television
- Two door hanging locker with drawer storage
- Three dead lights, port and starboard outboard, with drapes
- Chair, port
- Central vacuum inlet
- Panasonic telephone
- Cruisair SMX IR air conditioning control panel
- NAD DVD receiver L53
- Direct TV control box

MASTER HEAD:

- Entrance port and starboard in master stateroom
- Cherry wood sole
- Mica overhead with four recessed lights
- Two Tecma toilets / his and her's heads
- 110-volt GFI outlets, port and starboard
- Marble vanities drawers, port and starboard, with two porcelain sinks with two hot/cold water faucets; storage below
- Portholes outboard, with curtains
- Large stall shower, hot and cold shower head with wall mount water jets, and teak grated sole

Forward Companionway

- Seven steps down from pilothouse
- Suede overhead
- Vinyl overhead with recessed overhead lights cloths and with polished brass handrail
- GE separate washer and dryer
- High water alarm under the sole
- 100 liter hot water heat under the sole
- Two hot water circulation pumps under the sole
- Carpeted sole
- Grey and black water discharge pumps under the sole
- D.C. automatic bilge pump, under the sole
- Fiberglass black water tank

VIP Guest Cabin

- Carpeted sole
- Suede overhead with indirect lighting and central recessed feature; recessed overhead lights
- Queen berth, forward, with mattress, custom headboard, matching fabric to bedspread, and throw pillows, with air handler under
- Two reading lights recessed in soffit above head of bed
- Upholstered panels at head of bed
- Nightstand, with drawers, port and starboard outboard of berth
- Opening port lights, port and starboard outboard, with curtains
- Hanging locker to starboard with light
- Built in shelves, port and starboard
- Boss DVD 4200B AM-FM/CD player
- Samsung television
- Cruisair SMX IR air conditioning control panel
- Vanity with stool, starboard

- Kidde dry chemical fire extinguisher, no tag
- Direct TV control box

VIP / BOW CABIN HEAD:

- Cherry sole
- Overhead paneling with three recessed lights
- Vanity with porcelain sink with hot/cold water faucet and under counter storage
- Medicine cabinet
- Tecma toilet
- Porthole, outboard rainwater overhead
- Shower stall with door, water jets, hot and cold water showerhead, grate sole, and overhead light

Under Bow Stateroom Sole

- Two electric water heaters
- Central vacuum unit
- Bow thruster unit and associated hydraulics

Port Guest Cabin

- Twin side by side berths
- Carpeted sole
- Fabric walls
- Suede overhead with recessed lights and wood insert, rope lightning
- Nightstand between berths with storage drawer under and 110-volt outlet
- Custom upholstered headboards
- DSS SAT TV receiver, LCD television and Toshiba DVD player
- Upholstered panels on aft bulkhead
- Opening porthole, outboard, with drop shade
- Hanging locker with light, full length mirror, two adult type II life jackets and two-lb dry chemical fire extinguisher, tag February 2012 and two large drawers
- Entrance to head, forward
- Cuisair SMX IR air conditioning control

PORT GUEST HEAD:

- Cherry sole
- Overhead panels with recessed lights
- Opening porthole, outboard, with cherry wood
- 110-volt GFI outlet
- Vanity with porcelain sink with hot-cold water faucet and with storage

- Tecma toilet
- Beveled mirror with vanity style lights
- Shower stall with door, shower head with wall mount, hot and cold-water faucet, water jets, overhead light, grate sole

Starboard Guest Cabin

- Single berths, inboard and outboard-with under berth storage
- Nightstand with two drawer storage
- Custom upholstered headboards
- Two reading lights with swivel arms mounted on a raised cherry wood backlit panel
- Carpeted sole
- Suede overhead with recess lights
- Toshiba LCD television/DVD player
- Telephone jack
- Upholstered panels on aft bulkhead
- Opening porthole, outboard, with drop shade
- Hanging locker with light, full length mirror, two adult type II life jackets and two-lb dry chemical fire extinguisher, tag February 2012 and two large drawers
- Entrance to head, forward
- Cruisair air conditioning fan speed control
- 10BC dry chemical fire extinguisher, no tag
- Devon surround sound receiver AVR 486

STARBOARD CABIN HEAD:

- Cherry sole
- White overhead with recessed lights
- 110-volt GFI outlet
- Porthole, outboard, with mini blinds
- Marble vanity with porcelain sink with hot/cold water faucet and storage
- Tecma toilet
- Shower stall with door, hot and cold-water, rainwater shower head with wall mount, water jets, overhead light, grate sole
- Beveled mirror with four vanity lights

Crew Quarters / Companionway / Lounge

- Entrance via port side deck and swim platform
- Water tight door to the engine room and swim platform
- Vinyl overhead
- Vinyl wall covering
- Three Steps to the swim platform

- Overhead stereo speakers
- Smoke alarm
- Sharp television
- Village Marine water maker control panel
- Vitrofrigo 180 liter refrigerator
- JVC stereo
- Direct TV control box
- Full length mirror
- 3-lb Badger dry chemical fire extinguisher, tag February 2012
- L- shaped work bench with storage under a single pedestal table
- Two Glendinning shore power drums and assemblies in the starboard aft locker
- (6) steps down from side deck
- Storage locker starboard aft, with two hold lights
- Access to the port steering hydraulic cylinder below dinette
- Cruisair air conditioning control panel
- Cherry paneling and molding
- GE clothes washer
- GE clothes dryer
- Freshwater tank under the sole
- Panasonic telephone
- Overhead lights
- Emergency escape from engine room
- Recessed overhead lights

STARBOARD CREW CABIN:

- Vinyl wall covering
- Vinyl laminate sole
- Vinyl overhead with three lights
- Two single berths, outboard, with two storage drawers under lower berth
- Porthole with curtains, outboard
- Hanging locker, inboard
- Recessed shelves
- Five adult type II life jackets
- Air handler under the lower berth
- Reading light at each berth
- Pioneer stereo
- Access panel forward of upper berth to two 30-KG CO2 cylinders
- Cruisair air conditioning control

CREW HEAD:

- Access from crew's companionway
- Wood grate sole
- Overhead panels with two recessed lights

- Marble counter top with sink
- Medicine cabinet with mirror, outboard, with porthole
- Tecma toilet
- Exhaust blower
- 110-volt GFI outlet in overhead
- Shower head on hose with mixing valve and wall mount

PORT CREW CABIN:

- Laminate vinyl sole
- Vinyl overhead with three recessed lights
- Single berth, outboard
- Storage drawer, under berth
- Porthole outboard, with curtains
- Access to the lazarette in closet
- Shower sump under the sole
- Pioneer stereo
- 110-volt outlet
- Cruisair air conditioning control panel
- Hanging storage locker, inboard

Rudder Compartment

- Entry from crews quarters
- Hold light in safety cage
- 110-volt GFI outlet
- Access to steering gear
- Intercom speaker
- Port and starboard rudders with linkage arm
- Rudder position feed back position indicator
- Electrical panel
- Hydraulic pack for trim tabs
- Hydraulic steering pump, starboard
- Trim tab hydraulic pump assembly
- Access to the underwater lights
- Hydraulic steering actuator
- Emergency steering wheel with isolation valves
- Two 100-amp Cablemaster shore cord reels and collector bins

Bottom

- Zincs on each shaft
- Port and starboard Trac stabilizer flins

- Zincs on the port and starboard rudders
- Earthing plates, port and starboard
- Two single piston trim tabs
- Four under water lights on the transom

Fly Bridge

- **Radarch with:**
- Ten recessed lights
- Four stereo speakers
- ACR remote operated searchlights
- Mast with anchor light and forward navigation light
- Two VHF antennas
- Lightning dispatcher
- Raymarine radar scanner
- Hailer horn
- Anometer antenna
- Single horn trumpet
- Three GPS antennas
- Sirius Sat Radio antenna
- Two KVH Tracvision GHP antennas
- Tinted windscreen with stainless steel frame
- Retractable top sunroof
- Helm station cover
- Azimut steering wheel with cover
- Zenith compass
- Raymarine rudder angle indicator
- Raymarine Ray 240 VHF radio with external speaker
- Raytheon ST 290 autopilot
- Raymarine ST290 display
- Raymarine E120 E-120 chart plotter
- Vel nodeltek chart plotter
- Zahnradfabrik Friedrichshafen AG electronic clutch and throttle controls
- ACR searchlight control panel
- Two sets of Caterpillar analog displays
- Caterpillar instrumentation: tachometer, oil pressure, water temperature, gear oil pressure, fuel gauge
- Two American hydraulic bow and stern thruster control panel
- Azimut panel with intercom switches
- Panel with flap switches
- Panel with switches to windlass, steering pump, chain wash
- Panel with switches to compass light, parallel, and horn
- Start and stop switches to port and starboard engines

- Trim tab angle indicator
- 12 V.D.C. outlet
- Storage compartments, port and starboard
- Double bench-type helm seat, starboard, with storage and cover
- Wet bar with granite counter top, aft of helm bench seat, with LPG BBQ grill, sink with hot and cold water faucet, storage below, raised teak bar, isotherm refrigerator and fusion stereo with speakers
- Four stainless steel bar stools with new seat backs and cushions
- Deck courtesy lights on bridge (fore and aft)
- Assorted life jackets, under bench seats
- VEI LCD monitor and control panel
- Polyplaner stereo
- Teak over fiberglass deck, forward
- Fiberglass non-skid deck, aft
- 24" life ring, port and starboard
- Nautical structures davit 2200 lb
- Revere 12 man life raft
- Hot tub large umbrella
- **Tender:**
- 15' Novurania 460DL hard wide body hard bottom inflatable
- Yamaha 90HP outboard motor

Decks and Superstructure

- Teak over fiberglass deck
- Steps to aft deck, three port and three starboard, with stainless steel handrails
- Fiberglass bulkwarks with stainless steel railing and stanchions; flagstaff and hailer horn at bow
- Stainless steel bow bollard, port and starboard, with hawse eyes
- Stainless steel anchor chute and windlass platform
- Two 100-amp Cablemaster shore cords on electric reels, Starboard at steps
- Lofrans anchor windlass
- Approximately 250-lb fjord anchor with approximately 300' of chain
- Hatch, port and starboard forward to chain locker
- Hatch to Bosun's locker in forward superstructure
- Bulkwark doors port and starboard
- First station in starboard chain locker with 60' of 50 mm hose with nozzle
- Exhaust sponsons, port and starboard
- Boarding ladder brackets, port and starboard
- Two courtesy lights, port and starboard
- Port and starboard locker forward of lower helm
- Waste pump out in starboard locker
- Cover to forward U-shaped seating; table and sun lounge

- Fresh water shower connection with hot/cold water faucet in starboard locker
- Wind shield sun shield curtain
- Sun lounge area, center line, with new cushions 2014 with dry fast foam
- Sun shield for the pilothouse windows
- Door to galley, port
- Spring cleat in the hawse eyes, port and starboard
- Four fuel fills, two port and two starboard
- Entrance to crew companionway, starboard aft
- Navigation light, port and starboard
- Recessed lights in overhang, four port and four starboard
- Fire station in locker, starboard aft on side deck with 20m of 50mm hose
- Two windshield wipers
- Water fill, port and starboard aft
- DAVIT: Nautical Structures-Hydraulic/Electric
- PASARELLE: Opacmare - Electric / Hydraulic

Engine Room & Machinery

- T-CAT C32 A CERT
- Serial numbers: Port RNC 02372 / STBD RNC 02370
- Diamond plate deck
- Two 3-lb Badger dry chemical fire extinguishers, tag February 2012
- Two Kohler 32-kw generators with 4933 hours port and 5482 hours starboard
- Two telemechanic frequency controllers for engine room fans
- Discharge of oil placard
- Waste Management plan, forward
- Two generator exhaust/water separators
- Two engine room extractor fans
- Two engine room intake blowers, aft
- Two Racor 1000 fuel filters to each engine
- Two Racor 500 fuel filters to each generator
- Electric/automatic bilge pump with float switch, aft
- High water alarm switch, aft
- Six dual lamp florescent lights
- Hydraulic power takeoff from starboard engine to bow thruster and stabilizer hydraulics
- 4D 12-volt battery forward for each generator with cutoff switch
- Dripless shaft seals
- Fire pump, 220-volt, starboard forward
- Bilge pump, 220-volt, to six compartment manifold with manual backup pump
- Two air conditioning chilled water circulating pumps
- Two air conditioning raw water cooling pumps, port
- Two Mastervolt 100 amp 24-volt battery chargers
- Three main engine battery cut-off switches, aft

- Mastervolt 50 amp 24-volt battery charger
- Two generator battery cut-off switches, aft
- Emergency battery parrallel switch
- 24-volt electrical panel, aft
- 220V and 24V freshwater pressure pumps with accumulator tank, port forward
- Auxiliary raw water intakes, port and starboard forward
- Atlas shore power conditioner and control panel, aft. Makes this a world cruising capable yacht
- Electric fuel transfer pump, forward
- Bow thruster/stabilizer hydraulic reservoir, aft of port engine
- Two 8D 12-volt batteries, starboard port aft
- Lube oil tank, centerline aft
- Opacmare hydraulic pack for passarelle, port
- Generator 1 and Generator 2, 220-V.A.C. electrical panels, forward
- Twelve 2-volt batteries, centerline
- Fiberglass muffler to each generator
- Oil change pump to manifold for engines gensets and transmissions
- ZF Cruise Command control boxes
- CCTV camera
- Wateright entry door, aft
- Hydraulic reservoir, aft
- Diverter valve plumbed off both engine raw water intake for emergency bilge pumping capabilities
- Seamless transfer Atlas transformer in place of
- Two SAE shore power conditioners/transformers with digital meter
- Caterpillar gauge cluster, port and starboard
- Electric/hydraulic pack to passerelle
- Hydraulic pumps to central hydraulic system
- Intercom with headset

Exclusions

Owner's personal belongings.

Disclaimer

The Company offers the details of this vessel or yacht in good faith but cannot guarantee or warrant the accuracy of this information nor warrant the condition of the vessel. A buyer should instruct his representatives, agents, or his surveyors, to investigate such details as the buyer desires validated. This vessel or yacht is offered subject to prior sale, price change, or withdrawal without notice.

PHOTOS

Profile



Bow View



Aft View



Aft View



Foredeck



Foredeck



FB Helm



Flybridge



Flybridge



FB Bar



Flybridge



Flybridge



FB Helm



Jacuzzi



FB Bar



FB Bar



Siddeck



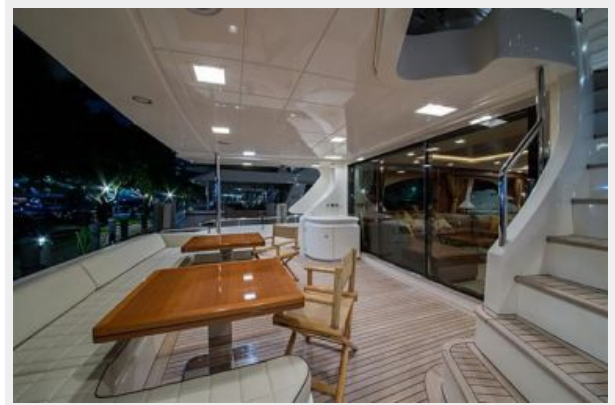
Aft Deck



Aft Deck



Aft Deck



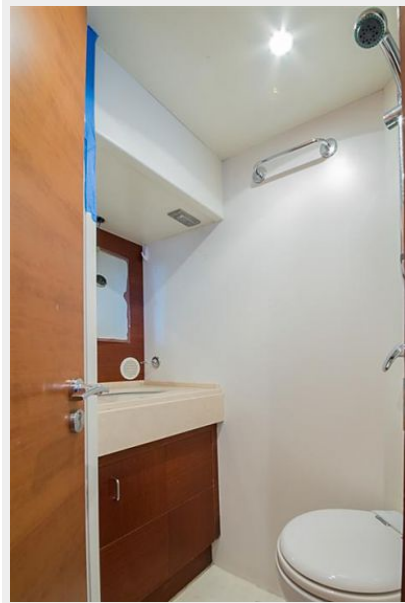
Passerelle



Crew Quarters



Crew Head



Engine Room



Engine Room



Laundry



Flybridge



Salon



Salon



Salon



Salon TV



Dinette



Galley



Galley



Pilothouse



Pilothouse



VIP



VIP Head



VIP



Master



Master



Master Vanity



Master Head



Master Head



Port Guest Stateroom



Starboard Guest Stateroom



Starboard Guest Head



Swim Platform



Salon



CONTACTS

Andrey Shestakov, leading yacht broker of the sales department of Shestakov Yacht Sales Inc. Shestakov Yacht Sales Inc., the official representative of the Miami/Fort Lauderdale FL headquarters.

Contact details

Email: andrey@shestakovyachtsales.com

Web: shestakovyachtsales.com/en/

Telephones

USA: +1(954)274-4435

Office hours

Monday – Saturday: **9:00 - 21:00** EDT

Sunday: **closed**

Address



Harbour Towne Marina, 850 NE 3rd St,
STE 213, Dania, FL 33004