

HALFTIME — LAZZARA



Builder: LAZZARA

Year Built: 2004

Model: Motor Yacht

Price: PRICE ON APPLICATION

Location: United States

LOA: 116' 0" (35.36m)

Beam: 23' 1" (7.04m)

Min Draft: 5' 6" (1.68m)

Cruise Speed: 21 Kts. (24 MPH)

Max Speed: 23 Kts. (26 MPH)

Our experienced yacht broker, Andrey Shestakov, will help you choose and buy a yacht that best suits your needs **Halftime — LAZZARA** from our catalogue. Presently, at Shestakov Yacht Sales Inc., we have a wide variety of yachts available on our sale's list. We also work in close contact with all the big yacht manufacturers from all over the world.

If you would like to buy a yacht **Halftime — LAZZARA** or would like help answering any questions concerning purchasing, selling or chartering a yacht, please call **+1(954)274-4435**

TABLE OF CONTENTS

TABLE OF CONTENTS	2
SPECIFICATIONS	5
Overview	5
Basic Information	5
Dimensions	5
Speed, Capacities and Weight	6
Accommodations	6
Hull and Deck Information	6
Engine Information	6
DETAILED INFORMATION	7
Vessel Walkthrough	7
Salon	8
Dining Area	9
Day Head	9
Main Deck Companionway	9
Galley	9
Master Staterooms	10
VIP Cabin Forward	10
Guest VIP Stateroom Port	11
Guest Stateroom VIP Starboard	11
Crew Quarters	12
Crew Lounge	12
Pilothouse	13
Electronics & Navigational Equipment	13
Sun Deck	13
Skylounge	14
Electrical Equipment	14
Engine / Mechanical	15

Deck & Hull	16
Upgrades and Recent Maintenance	16
Comments	17
Exclusions	17
Disclaimer	17
Exclusions	17
Disclaimer	17
PHOTOS	19
Salon looking Forward	19
Salon Conversation Lounges	19
Galley Country kitchen	19
Galley 2	19
Sky Lounge	19
Sun Deck	19
Pilot House 2	20
Pilot House	20
Sun Deck	20
Master Cabin	20
Master Head	20
VIP Cabin 2	21
Bathroom	21
VIP Berth	21
Captain's Cabin	21
Captain's Head	21
Crew Double Cabin	21
Crew Head	22
Crew Quarters + washer dryer	22
Engine Room	22
Hydraulic Swimplatform	22

Aft deck	22
Aft deck 2	22
Bow	23
Boat Layout	23
CONTACTS	24
Contact details	24
Telephones	24
Office hours	24
Address	24

SPECIFICATIONS

Overview

PRICE REDUCED!!!.....,Needing almost nothing this yacht is as close to flawless as you will find. You have been working hard and deserve a break ... It's HALFTIME . Beginning as a 110 ft. Lazzara Yacht, a hydraulic swim platform extension was added making her 116 ft. This gives her all the features of what became the Lazzara 116 ft. model. The difference in features and layout of the 116 foot model and HALFTIME is she millions less dollars In a market where quality 110ft - 120ft Sky lounge Yachts are in small supply, and priced much higher here is one of the best. Veteran Captain Paul Canavan (100- 220 feet - 40 years) says " She was incredibly quiet smooth and yet fast at over 22 knots. She looks like she is only a few years old. This is a great yacht." With a recently updated interior, all audio visual, decks, mechanics and air conditioning; this stylish, mint condition 4-stateroom yacht demands attention. If you have a fiberglass , 4-stateroom , Sky lounge and great sun deck, mint condition buyer. You can spend more. on a 1 year newer 116 footer ... but *why?*

Basic Information

Category: Motor Yacht

Sub Category: Sky Lounge

Model Year: 2005

Year Built: 2004

Refit Year: 2014

Refit Type: Interior and interior systems

Country: United States

Vessel Top: Enclosed Pilothouse

Cockpit: Yes

Dimensions

LOA: 116' 0" (35.36m)

Beam: 23' 1" (7.04m)

Min Draft: 5' 6" (1.68m)

MFG Length: 110' 0" (33.53m)

Speed, Capacities and Weight

Cruise Speed: 21 Kts. (24 MPH)

Max Speed: 23 Kts. (26 MPH)

Water Capacity: 600 Gallons

Holding Tank: 300 Gallons

Fuel Capacity: 4000 Gallons

Accommodations

Total Cabins: 4

Sleeps: 8

Total Heads: 6

Captain Cabin: True

Crew Cabin: 2

Crew Berths: 3

Crew Sleeps: 4

Crew Heads: 2

Hull and Deck Information

Hull Material: Fiberglass

Deck Material: Teak and Fiberglass

Hull Configuration: Modified V-Hull

Engine Information

Engines: 2

Manufacturer: MTU

Model: MYU 16V2000

Engine Type: Inboard

Fuel Type: Diesel

DETAILED INFORMATION

Vessel Walkthrough

Before taking a tour of HALFTIME consider her features and benefits:

- In absolute mint condition (\$250,000) spent in 2013/2014
- Without a doubt one of the top yachts available between 110 - 125 feet. Needs almost nothing !
- 4 large staterooms. Huge master, 3VIP's- Everyone is treated special
- Great profile with Sky lounge and huge out door sun deck - for those perfect island days
- Completely updated renewed A/C system - clean clear fresh air throughout the boat.
- Famous American style country kitchen
- Completely updated with the best sound and entertainment systems 2014 - The party or romance is on.
- Fast, sleek, easy to run and dock!

Working too hard? What is your fun quotient? Take a break... have some fun ! It's HALFTIME! This all began with a Lazzara 110 ft. yacht, a hydraulic swim platform extension was added making her 116 ft. This gives her all the features of what has become the queen of the Lazzara fleet the 116 model. Just like HALFTIME the 116 model now includes the hydraulic swim platform and the layout conceived here. Walk through:

From the aft deck, entering the **Main Salon** you are greeted by a modern yet exquisite combination of polished rich fine wood, brand new carpeting, custom fabrics, works of modern art and granites. The aft seating area offers a sofa, loveseat, and an entertainment center with a state of the art, retractable TV. The new AV system is complete with I pod control and "One Touch" electrical lighting. The AV system had a major refit and is complete with all the latest in sound and video high-end components including a Control 4 system. Additionally, there is a game table with chairs and two conversational love seats on a mirror onyx floor. To starboard there is a serving bar which includes an ice-maker, refrigerator, wine cooler and storage for bar-ware and accessories. A cocktail party for 30 people or more can easily be served.

Master Stateroom Below, the **Master stateroom** is full beam, freshly decorated and features everything from a TV to an entertainment center and large walk in closet. The master head features marble, wood and mirrors that offer you an oasis. The wood cabinets are crafted with his and hers under-mounted sinks with marble counter tops. The over-sized glass enclosed shower and Jacuzzi bath ensure a relaxing experience.

Guest Staterooms:

Further down the companion way are **two VIP Guest Staterooms aft** with double berths. Both staterooms include en-suite heads, hanging lockers and drawer storage, TV with DVD players and are decorated with new fabrics, stone and wood joinery.

The **VIP Stateroom forward** is accessed via a stairwell forward in the Galley and features a Queen berth and ensuite head. This private location is ideal for additional privacy. The Pilothouse features state of the art electronics and communication systems. There are five 20" flat panel monitors for navigation, camera, television, etc. Dual SIMRAD Black Box Radars, dual GPS, and an RGM I ISIS 700A System are a few of the Navtronics that set this vessel apart from others. The Skylounge can be accessed from the Pilothouse or from spiral stairs from the aft deck. This area includes a Jacuzzi hot-tub, wet bar and Miele Grill. The aft deck offers another great area for relaxing, dining or entertaining. This area includes a completely equipped bar, large teak dining table with ample seating and port and starboard boarding gates. There is also access to the Sun Deck, the swim platform, the transom and an on-deck doorway to the crew area and engine room.

The crew area is accessed by a centerline watertight door from the transom. The crew area includes two staterooms, each with ensuite heads and accommodation for three. A crew lounge with settee and table, TV, DVD player, refrigerator, microwave and washer and dryer provide an area for relaxing and privacy.

Salon

Elegance and sophistication are the theme in this spacious Salon. Rich high-gloss cherry woodwork and neutral soft colors work together for a soft inviting place to relax or entertain. The recessed lit cherry soffit over the sofa creates a focal point for conversation with guests. A wet bar starboard is a nice place to start as you prepare for games at the small table to port.

- Custom upholstered sofa and upholstered bar stools, sofa seat & foot rest (new 2014)
- Custom upholstered occasional chair (2014)
- End tables (2)
- Table lamps (1)
- Custom African high-gloss cherry cabinetry throughout
- Samsung 3DSmart TV (2014)
- Flush mount surround sound speakers (5) and all new entertainment center; blue ray disc player (2014)
- Wet bar in African cherry wood;black granite top; chrome sink; U-line ice maker; refrigerator and wine cooler;glass and bottle storage
- Wood game table with leather inset and brass drink/ash tray holders, upholstered chairs
- Custom upholstered bar chairs (2014)
- Custom Lutron Electron "One Touch" total control lighting
- Original oil painting and custom reproduction

Dining Area

The dining table was removed for a more comfortable casual dining experience. This also give 30 % more usable space to the salon. Port and starboard cabinetry, provide added storage for any possible event or party.

- Custom wood soffits over dining area with recessed lighting
- Built-in buffets with china cabinets, port and starboard bulkheads
- Forward buffet feature radius fronts with beveled glass door fronts, mirrored backs and acrylic stemware holders
- Forward buffet has Cherry Wood top Custom upholstered window valances
- Remote Controlled Pleated Shades
- Custom Marble Flooring carried through to on deck laundry room and day head

Day Head

On Deck day head to Stb.

- Vanity with radius cherry wood finish Marble counter-tops
- Marble flooring
- Royal Flush toilet Lutron lighting controls

Main Deck Companionway

Laundry Room

- Located forward of dining area on main deck to port
- Bosch front loading washer and dryer
- Storage
- Marble flooring
- Wall mounted ironing board

Companionway Storage (under Pilothouse)

- Frigidaire top loading freezer
- Lutron Homeworks lighting control system (2)
- Everclear 40 gallon hot water heater
- Electrical distribution panels for Salon and Galley

Galley

The Galley is located forward of the dining area and features a spacious "Country Style" design with full upright stainless steel fridge, freezer and appliances. The settee seats four comfortably.

- U-line stainless steel fridges
- Kitchen Aid five-burner cook-top stove
- Kitchen Aid convection oven
- GE profile microwave/convection oven with exhaust fan
- Stainless steel double sink with Grohe faucet and Insta- Hot Water Dispenser
- Kitchen Aid Trash compactor
- U-line "clear cube" ice maker
- Granite counter-tops with bull-nose
- Built-in settee with upholstered seating and granite top table
- Custom overhead soffit with lighting
- Samsung flat screen TV (retractable in overhead)
- Panasonic phone system
- Stairwell forward to starboard down to VIP Stateroom
- Brand new décor throughout

Master Staterooms

The Master Stateroom features high-gloss cherry woodwork with cherry soffit overhead the king size bed. Oversize portholes giving great views .

- Double door access to master suite from lower foyer Custom coordinated
- Center line king size bed Storage below berth
- Custom upholstered silk headboard with mirrored bulkhead above headboard
- Built-in dressers (2) port and (2) starboard Upholstered settee
- Cherry wood two-drawer nightstands (2)
- Cherry wood vanity desk with wood top and drawers Custom vanity chair
- Full length mirror inside of walk-in closet door
- Large walk-in closet with double hanging rods and shelf organizer
- Gold plated door handles and electrical switch plates Lutron lighting
- Full size hanging closet with rod to starboard Carpeting throughout
- Panasonic phone system
- 3D Smart TV, surround sound, blue ray disc player

VIP Cabin Forward

Located in the bow and accessed from forward the Galley. A very private and elegant space for those guests who want to have their privacy and features decorative high-gloss hand-carved cherry woodworking and sophisticated styling.

- accessed via a stairway from forward of the galley to starboard
- Overhead access hatch to foredeck with dark out screen
- Center-line Queen berth
- Built-in nightstand and upper cabinets port and starboard

- Indirect lighting under bed and bookcases
- Cedar lined hanging locker
- Bookcase with mirrored back port & starboard Flush mounted halogen lighting in headliner Veneered cabin door
- Panasonic PhoneSystem
- 120V receptacle port & starboard
- Veneered door accessing private head
- Gold plated cabin door handles and switch plates

Guest VIP Stateroom Port

High-gloss cherry wood wall panels, small queen berth and en-suite head makes this a perfect place for your guests to also feel important

- Small Queen berth with custom spread, pillow shams and bedding
- Storage below berth
- Flush mounted halogen lighting in headliner Beige carpeting with Sundown insulated padding Built-in nightstand on right side of bed
- Mirrored cedar lined hanging locker
- Custom upholstered window valances
- Remote controlled pleated shades
- Lutron lighting controls
- Entertainment Center with Samsung 30" LCD Smart TV; Marantz receiver; blue ray disc player; AM/FM stereo with glass shelving and cabinets below
- Private en-suite head with glass stall shower; radius wood vanity and marble countertop; mirrored medicine cabinet over vanity; Microphor toilets; Grohe gold fixtures; and marble flooring
- Panasonic phone system

Guest Stateroom VIP Starboard

Comfortable and custom designed. This stateroom has its own private head and lots of storage space with a hanging locker and dresser drawers.

- Double berth with custom spread, shams. Storage below berth
- Built-in night stand on left side of berth
- Custom upholstered window valances
- Entertainment center with 30" Samsung LCD Smart TV; Marantz receiver; blue ray disc player; AM/FM stereo; shelving and cabinets below
- Beige carpeting with sound down insulated padding Lutron lighting controls
- Flush mounted halogen lighting in headliner Private en suite head with glass stall shower; radius wood vanity and marble counter-top
- Mirrored medicine cabinet over vanity; Microphor toilets; Grohe gold fixtures; and marble

flooring

- Private access to head from staterooms Mirrored medicine cabinet over vanity Brass faucets, fixtures, towel bar and ring Linen storage cabinet
- Marble floor and vanity counter-top Stall shower with gold Grohe fixtures Microphor head
- Exhaust fan
- Halogen lighting overhead with LED switches

Crew Quarters

Captain Cabin

- Over sized double berth with storage below, TV
- Cherry wood nightstand with two-drawer storage
- Wall mounted reading lights under overhead Cherry wood cabinets
- Mirrored Cedar-lined hanging locker Overhead storage cabinets
- En suite head with Corian vanity top, medicine cabinet, shower stall and Grohe fixtures
- Panasonic phone system

- **Crew Cabin #2**

- Lower single berth with drawer storage beneath
- Upper berth
- Overhead storage cabinets
- TV
- Cherry wood nightstand with two-drawer storage
- Mirrored Cedar lined hanging locker
- Ensuite head with Corian vanity top, medicine cabinet, shower stall and Grohe fixtures
- Panasonic phone system

Crew Lounge

- Upholstered settee with storage under cushions
- Cherry wood sink, cabinets and drawer storage above and below
- Scotsman under-counter refrigerator
- Sharp microwave
- Corian countertop with stainless steel sink
- Cherry wood bookcase over settee
- State of the art Samsung TV
- AM/FM stereo receiver and CD/DVD player
- Bosch washer and dryer
- Remote pull station for engine room fire suppression system
- Access to engine room via watertight door

Pilothouse

- (2) STIDD beige leather helm chairs
- One Electric Bookshelves above settee
- Chart and drawer storage Teak and holly flooring Overhead stereo
- speakers (2)
- Upholstered bench settee with oval teak table Storage behind and below settee
- Equipment access under stairs
- Stairs leading to Sky-lounge
- Full electronics as listed below

Electronics & Navigational Equipment

- SIMRAD Black Box Radar with control units
- SIMRAD autopilot control AP50
- Furuno Color LCD Sounder FCV-1200L
- Bosch 20" data screens (2)
- GM ISIS 700 A system with alarm monitoring
- Simrad AR78 compass display
- B&G Hydra 2000 speed/depth display B&G wind speed and direction display Jastram steering mode selector
- Furuno NAVTEX NX500
- SIMRAD ALS
- Axis P5534 PTZ Dome Network Camera on Aft Deck 2/2013
- MTU electronic engine displays (port and starboard)
- ELBEX EXS 145 three-zone camera control
- TRAC digital stabilizer control
- American bow thruster control
- SIMRAD NI 300X VHF radios (2) w/RS87 handsets
- ICOM IC-M802 MF/HF marine
- SSB transceiver
- KVH HD7 satellite TV 8/2011
- KVH satellite phone system
- Nobeltec navigation system

Sun Deck

Even though there is a Skylounge , the outside sundeck has lounging and seating for 12-14

- Teak Lounge sun chairs (6) with cushions and Sumbrella Covers
- Teak Side Tables (4) with Sumbrella Covers
- White Corian counter w/Miele electric grill & sink

- Uline Refrigerator
- 4 JL audio speakers and 10in subwoofer
- Teak oval tables with stainless base
- Canvas covers for all seating, teak tables
- Radius settee with Sunbrella cushions and storage below
- Jacuzzi tub with sunpad cover on top
- Removable tender chocks
- Hydraulic 2500lb davit
- 15' 2006 Novurania 460 DL with 90hp Evinrude (stored on swim platform)
- (2) life rafts
- Spiral stair with custom stainless handrails down to aft deck
- 2 large sun umbrellas offer shade

Skylounge

The spacious and comfortable Skylounge is not only functional but also gives you an awesome ocean view. Accessed by a Companionway from the Pilothouse.

- Custom L-Shaped sofa
- Leather Ottomans (2)
- Cherry wood desk with drawers and storage cabinets
- Marble top bar w/chrome sink and Cherry wood cabinetry and drawers underneath U-line Ice Maker and Refrigerator
- Marble cabinets featuring a retractable TV
- New desk chair
- Murantz Home Theater - custom pop-up inside Cherry wood cabinet with front storage
Access to the Boat Deck through Double sliding Radius smoked glass doors
- Custom upholstered window valances
- Remote controlled pleated shades
- Panasonic Phone System

Electrical Equipment

- Cummins Onan 45KW generators with sound shield (port: 4290 HRS, starboard: 4286 HRS)
- SIS 700A shipboard and alarm monitoring system
- Alarms for engines, reduction gears, bilges, generators and audible/visible
- 100/240V shore power inlets (2) aft and (2) forward UPGRADE
- Lutron Homeworks processor controlled automated scene lighting system with three-zone coverage: main salon, master stateroom/bath and exterior lighting UPGRADE
- Mark VIII Dynaplate for grounding and lighting protection (2)
- Atlas shore power system, world power classic II (50 KVA) UPGRADE
- AC/DC master control distribution panel located in engine room with secondary distribution

- sub-panels located throughout
- Anchor light 24V
- Batteries, heavy duty and maintenance free, four banks, 450 AMPs
- Vapor-proof battery switches Bonded electrical system Coded wiring system
- Engine room lights
- Interior lighting throughout the entire boat including crew quarters
- Underwater lights in transom
- (3)UPGRADE Navigation lights 24V - Lupolights 4/2013 Removable towing lights - Lupolights 4/2013 Arch lights and bulwark lights,24V Emergency DC lighting in each room

Engine / Mechanical

- Twin DDC/MTU 16V2000, 2000HP each Port 3150 Hours/Starboard 3200 Hours. All engine service calls up to date
- Three-station Detroit Diesel electronic controls, combination clutches/throttles, with electronic engine synchronizes
- Detroit Diesel electronic control engine function displays
- TRAC marine AT ANCHOR hydraulic stabilizers, 11.5 sq.ft., over-sized for slow speed cruising
- Delta T systems engine room ventilation and blowers, variable speed (2@ 230V)
- Fuel priming pumps for each engine and generator (4)
- Mufflers for engines and generators Underwater engine exhausts
- Oil changing system for engines, gears & generators, Oberdorfer pump, 120V reversible with oil quality gauge and selector valves
- Flowmax bilge pump, 3HP, 230V, 120 GPD, manifold to four bilge compartments
- Rule 24V secondary bilge pumps to evacuate each bilge
- Flowmax engine-driven emergency hydraulic bilge pump
- Main engine sea strainers, oversized to reduce inlet restrictions
- Oil reserve tanks, 72 gallons each with deck fills
- Bronze underwater thru-hulls and sea cocks Stainless steel cast rudders
- Aquamet 4.5 shafts
- Water filtration system Water tanks, linear polyethylene, FDA approved (2)
- Dockside water connections with pressure reducing valves (2)
- Flomax fire pump 5HP, 230V, with two hose connections on deck
- Fresh water outlet in engine room Aircraft-type stainless steel fuel lines, solid and flexible
- Oberdorfer transfer pump to transfer from auxiliary fuel tank to main tank, 10 GPM
- Jastram hydraulic power-assisted steering, dual engine driven pumps to include automatic change over to manual helm backup
- American hydraulic bow thruster 50HP, 16 aperture powered off PTO
- Sea Recovery SRC 2400 GPD water maker Cruisair chilled water A/C system 144,000 BTUs
- Headhunter Royal Flush marine toilet system Sea-Fire automatic and manual fire suppression, with damper system on fans and automatic shut down system on fuel to

- engines and generators Freshwater wash down on fore deck, stern deck and Flybridge
- Racor manifold fuel filters for engines and generator; Holding tanks with access for pump out (one holding tank forward holds 300 gallons, two 40 gallon tanks space port and starboard for crew heads) Hi-lift mufflers for generators
 - Removable engine room flooring
 - Basic sump box with bilge pumps and float switch for main deck, with separate high-lift pump for draining master tub and engine room sink; dual sump box pumps for crew grey water
 - Compressed air outlet in engine room
 - Air conditioned engine room
 - Acoustical and thermal insulation in engine room

Deck & Hull

- Dual Maxwell 4500 windlasses with Poole Polished Stainless Steel anchors
- Custom designed stainless steel cleats Forward bow seating with hydraulic lift lid to access storage underneath
- Bulwark boarding gates, port and starboard, forward and aft
- Bomar escape hatch or oversized windows from bow VIP stateroom and all staterooms
- Boarding doors port and starboard
- Automatic anchor chain wash down system
- Aft swim deck cleats are extra reinforced for towing a large tender
- Courtesy lighting around forward bulwarks
- Stainless steel 2" bow rails with bow flagstaff
- Stainless steel ships bell
- Hand-laid uni-directional fiberglass Vinyl ester skin coat
- Awlcraft exterior
- Fiberglass reinforced stringer system
- Solid fiberglass laminate keel, chines and center line Blister-resistant gel coat below waterline
- Lower sole isolated using vibration reducing discs mounting pads for noise reduction

Upgrades and Recent Maintenance

- Atlas 50 KVA power converter fully serviced
- New Aft deck ice maker
- All A/C system cleaned renewed as needed some compressors and soft starts
- Lutron lighting system throughout
- Towing cleats on transom installed
- Fresh bottom paint
- Constant polish and hull wax
- Prop speed applied to props

- Freshly balanced props - S-class
- New carpeting on all decks
- New Bosch 20" monitor screens (5) - 10/2012
- iPod touch controlled system throughout (3)
- AV is run by Control 4 system
- Sea Recovery 2400 GPD water maker membranes - 5/2013
- Dual SIMRAD black box radars
- Maxwell 4500 dual anchor system Teak decks on Sun Deck
- Wireless internet throughout boat and amplified cell communication
- Direct TV receivers in all cabins
- New cutlass bearings - 3/2013
- All new interior all cabins all decks 2014

Comments

There simply isn't a safer or more proven yacht available that is so beautiful and comfortable. In absolute Top Condition, she will please most all. Nearly as big as a 116' Lazzara (it's hard to see the difference), for millions less!

Exclusions

Owners custom wave Runners - not included in sale A complete list of EXCLUSIONS is available upon request and will be submitted at time of mutually agreed contract.

Disclaimer

Specifications are provided for informational purposes only. Data was obtained from sources believed reliable but is not guaranteed by owner or brokers. Buyer assumes responsibility to independently verify all speeds, capacities, consumption and other measurements contained herein and otherwise provided and agrees to instruct his agent/s to confirm such details prior to purchase. Vessel subject to prior sale, price and inventory changes and withdrawal from market without notice.

Exclusions

Owner's personal belongings.

Disclaimer

The Company offers the details of this vessel or yacht in good faith but cannot guarantee or warrant the accuracy of this information nor warrant the condition of the vessel. A buyer should

instruct his representatives, agents, or his surveyors, to investigate such details as the buyer desires validated. This vessel or yacht is offered subject to prior sale, price change, or withdrawal without notice.

PHOTOS

Salon looking Forward



Salon Conversation Lounges



Galley 2



Galley Country kitchen



Sky Lounge



Sun Deck



Pilot House 2



Pilot House



Sun Deck



Master Cabin



Master Head



VIP Cabin 2



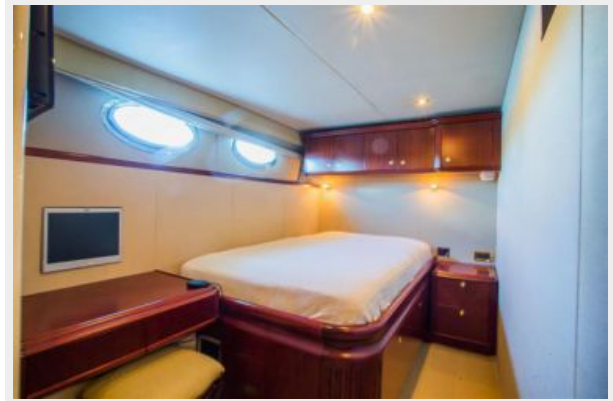
Bathroom



VIP Berth



Captain's Cabin



Captain's Head



Crew Double Cabin



Crew Head



Crew Quarters + washer dryer



Engine Room



Hydraulic Swimplatform



Aft deck



Aft deck 2



CONTACTS

Andrey Shestakov, leading yacht broker of the sales department of Shestakov Yacht Sales Inc. Shestakov Yacht Sales Inc., the official representative of the Miami/Fort Lauderdale FL headquarters.

Contact details

Email: andrey@shestakovyachtsales.com

Web: shestakovyachtsales.com/en/

Telephones

USA: +1(954)274-4435

Office hours

Monday – Saturday: **9:00 - 21:00** EDT

Sunday: **closed**

Address



Harbour Towne Marina, 850 NE 3rd St,
STE 213, Dania, FL 33004