

## MR. CHIPS — NEPTUNUS



**Судостроитель:** NEPTUNUS

**Длина общая:** 70' 0" (21.34m)

**Год постройки:** 2001

**Модель:** Моторная яхта

**Цена:** ЦЕНА ЯХТЫ ПО ЗАПРОСУ

**Местонахождение:** United States

Купить **Mr. Chips — NEPTUNUS** а также выбрать подходящую вам яхту из нашего каталога яхт вам поможет опытный яхтенный брокер Андрей Шестаков. На сегодняшний день компания **Shestakov Yacht Sales Inc.** имеет большое количество яхт в собственном списке продаж, а также тесно сотрудничает со всеми крупными яхтенными производителями по всему миру.

Для того чтобы купить яхту **Mr. Chips — NEPTUNUS** а также проконсультироваться по любому вопросу связанному с покупкой, продажей, чартером яхт позвоните по телефону **+7(918)465-66-44**.

# ОГЛАВЛЕНИЕ

ОГЛАВЛЕНИЕ	2
ХАРАКТЕРИСТИКИ	4
Основная информация	4
Размеры	4
Размещение	4
Корпус и палуба	4
Информация о двигателе	4
ПОДРОБНОЕ ОПИСАНИЕ	5
Just One Glance	5
Aft Deck	5
Flybridge Area	6
Flybridge Helm	6
Salon	7
Galley	8
Dining Area	8
Companionway	9
Master Cabin	9
Master Head	10
VIP Suite	10
VIP Head	10
Guest Cabin	11
Guest/Day Head	11
Laundry Room	12
Lower Helm	12
Forward Deck	12
Hardtop Equipment	13
Arch Equipment	13
Crew Cabin	13

---

Engine Room	14
Electrical Systems	15
Exclusions	16
Disclaimer	16
Исключения	16
Отказ от ответственности	16
ФОТОГРАФИИ	17
КОНТАКТЫ	25
Контактная информация	25
Телефоны	25
Время работы	25
Адрес	25

# ХАРАКТЕРИСТИКИ

## Основная информация

Тип судна: Моторная яхта

Модельный год: 2001

Год постройки: 2001

Страна: United States

Открытая палуба мостика: Да

## Размеры

Длина общая: 70' 0" (21.34m)

## Размещение

Всего кают: 3

## Корпус и палуба

Материал корпуса: Fiberglass

## Информация о двигателе

Двигатели: 2

Производитель: MTU

Модель: 12V 2000

Тип топлива: Diesel

---

# ПОДРОБНОЕ ОПИСАНИЕ

---

## Just One Glance

---

- One glance at this beautiful 70' Neptunus Flybridge and you will instantaneously notice a freshly painted exterior (December 2013).
- Welcome on board! This yacht can be easily accessed through the midship boarding gates or the swim platform. A tender is thoughtfully held in place by the hydraulic swim platform without any boarding interference.
- The aft deck provides fixed and loose seating options. Upon entering through the posterior sliding door you will step into a spacious salon featuring an open plan layout (Salon Area, Partial Galley and Lower Station.) The forward steps will lead you into a three cabin layout, each cabin containing its own private head.
- The cabin layout was designed with a forward VIP and an Amidship Master partitioned by the Guest Cabin. The Flybridge features a hardtop, a tri-enclosure and an incredible lounge area.

## Aft Deck

---

- The spacious nonskid fiberglass aft deck offers an inspiring outdoor seating area to enjoy beautiful sunrises while enjoying your favorite morning breakfasts, lovely nightly outdoor gatherings under starry skies and a setting to step next to the gunnel, hold on to the cylindrical stainless steel rail and lose your train of thought staring into the horizon. For your commodity, refreshments can be stored in the aft deck refrigerator, a stainless steel under mount sink offers hot and cold taps and what better way to enjoy your favorite evening than listening to your favorite tune through the stereo speakers. Additional aft deck features include:
  - Trend stainless steel trimmed tinted glass siding entry door
  - Aft deck built in seating for four with removable vinyl cushions and Stamoid cover (cover new 2/14)
  - Teak high gloss table with maple inlay 30"x 58" with dual stainless steel pedestal (table new 11/13)
  - Portside storage cabinet w/Avonite countertop and stainless steel handrail
  - Trend stainless steel entry door
  - Starboard side fiberglass 10 read steps to Flybridge deck each w/a step light
  - (6 ) Aft Deck overhead lights
  - (2) Pylaster area cabinets, each w/a set of clutches and throttles, bow and stern thrusters plus start/stop/control switches
  - (2) Bollard type Aft Deck cleats
  - Port and Starboard stainless steel hinged boarding gates from swim platform
  - (4) Curved fiberglass steps to swim platform starboard side
  - Integral fiberglass swim platform

- Watertight door to Crew and Engine Room
- Swim platform fresh water wash down
- Swim platform hot & cold shower
- (2) Stern cleats
- Aft facing CCTV camera
- (2) Stainless steel Boat Deck support poles
- (2) Stainless steel hoop rails
- Port and starboard 50 amp 220 volt cable master lockers
- (2) Marineco cable TV/phone inlets
- (5) LED step lights
- Full beam hydraulic tender platform raises above deck level for heavy seas
- (2) Clarion 2 stage stereo speakers
- (2) Door storage cabinet in transom

---

## Flybridge Area

---

- Fly away with me! Atop the flybrige is a completely new yachting experience. Imagine your vessel cruising full speed, the cool, fresh ocean breeze blowing against your face and subtly disarranging your hair. The nonskid fiberglass steps lead the way to the flybridge. A spacious C shaped seating area with a center fiberglass table (stainless steel base) allows for comfortable entertaining! Thoughtfully added, a tastefully dark blue convertible umbrella offers shade during sunny days!
- Additional Features Include:
- Custom split walk through radar arch
- Marquipt 800 lb. davit
- Stainless steel rail around aft Boat Deck perimeter
- 8 Man life raft chocked on deck w/hydro release (new 2013)
- Fiberglass hardtop w/stainless steel supports and ventilation hatch
- 3 Side clear vinyl enclosure w/(4) U Zips by Sea King (new 2014)
- (6) Overhead stainless steel trimmed lights on hardtop underside
- (2) Folding resin deck chairs
- EPIRB
- Fiberglass wet bar w/a Raritan ice maker & storage cabinet plus a stainless steel sink and Miele cook top under a hinged lid
- Deck level courtesy lights
- 12 Volts Flybridge panel w/(30) breaker protected circuits & a digital volt & amp meter
- 120V GFCI outlet

---

## Flybridge Helm

---

- Take command of the wheel in confidence! Or you can always have a Captain do it for you. The centerline helm comes with burlwood panels. Three high Stidd helm chairs -recently

recovered this year- provide comfortable seating and a great view ahead!

Because you should not expect anything less, the flybridge helm area comes fully equipped with:

- Raymarine E120 plotter/GPS/CCTV monitor
- Furuno 72 mile Raster scan radar
- (3) Wema fuel gauges
- (2) MTU DDEC LCD gauge panels
- Icom M127 VHF
- Start/stop buttons and key switches
- Side power integrated bow and stern thruster controls
- Simrad AP22 autopilot
- Raymarine ST60 digital depth
- Raymaine ST60 digital speed log
- ACR Pointpad spotlight controls
- Garmin GPS map 4212 plotter
- Fireboy engine override control panel
- 12 Volt outlet
- Phase Linear UMP 400 AM/FM/CD receiver
- Icom M304 VHF w/DSC
- Bennett trip tab controls
- MTU/DD electronic engine controls
- MTU/DD station active control
- Tinted stainless steel framed Venturi windscreen
- Chart book/area w/hinged plexiglass cover
- (2) Lucite drink holders
- Intercom
- Stereo speakers
- MTU/DD emergency engine controls
- (6) Bilge pump indicator lights
- Windlass controls
- Blower controls
- Ritchie 5" magnetic compass
- Windshield wiper on glass panel in front of helm
- Naiad stabilizer controls (new 2013)
- Helm cover (new 2/2014)

## Salon

- Featuring a spacious/ open deck plan and large lateral windows, an elegant, tastefully decorated salon can be accessed through the posterior sliding door. A U shaped Ultra Leather 6 person seating with a built in end table allows plenty of lounge space and conveniently contains portside underneath storage.
- A Teak/ Burlwood with maple inlay high gloss table is positioned in front of the seating;

revealing the attention to detail, the perimeter is lit up by concealed rope lights for a nice soft nocturnal accent.

- A mirrored forward bulkhead contains a small burlwood shelf.
- Three oval porthole structured windows, commonly found in larger Neptunus MotorYachts, are situated behind the salon seating.
- Roman shades and upholstered valances adorn every window!
- A burlwood entertainment cabinet consists of a Polaroid 26" LCD TV, Sony DVD player and a superior cabinet containing a Pioneer 12V Am/FM/ CD player, terrestrial television antenna booster and aft deck speaker volume control.
- A Raymarine SAT TV control box, CD/DVD storage are found in a cabinet.
- Two recently upholstered chairs are kept apart by a burlwood/ laquer finish end table with a pullout bar storage drawer.
- Additional storage is available behind the upholstered chairs.
- Added features include a soffit style A/C delivery, soffit style ceiling detail containing rope lighting over coffee table, 11 small halogen spots overhead, alpine 2 stage stereo speakers & recently carpeted floor.

## Galley

---

- A Pantograph lateral door facilitates loading the Galley and handling lines.
- Forward to the salon, separated by a port bulkhead, a beautiful galley can be found. The cabinets feature a lacquer with clear protective coat finish for added durability. An exquisite "Golden Beach Light" granite carefully lies on top of the counter tops (November 2013).
- A bulkhead provides a division between the galley and salon.
- Additional Granite Equipment Includes: Double stainless steel under mount sink w/cover, Insinkerator/ Garbage Disposal, Grohe removable spray faucet, GE Profile Burner Ceran Cook Top ( New 2013), GE built in under counter oven, Frigidaire dishwasher, Jennair Trash Compacter, GE Profile Stainless Steel Refrigerator, GE Profile built in oven stove top with microwave oven/broiler, (9) Halogen Mini Spots, (15) Lacquered cabinet door, Black and Decker coffee maker concealed by a lacquered cabinet, " Amtico" laminate sole (New 2013), (5) Under cabinet mini spotlights, (3) Overhead Halogen mini spotlights and Soffit w/rope lighting at the perimeter above.
- A service banquet with great storage space underneath stretches 8 feet fore and aft in the starboard area adjacent to the Galley. The storage space includes six lacquered drawers and four cabinet doors which can hold additional dishes and plenty of household items.
- Burlwood and four framed artwork pieces adorn the top.
- Additional equipment in this area includes a central vacuum outlet, Phantom screen for the lateral door, a smoke detector and two overhead halogen mini spots.

## Dining Area

---

- The dining area is just forward of the Galley.



- A pass through from the forward bulkhead of the Galley adds visibility to the lower control station to starboard and facilitates food delivery.
- A beautiful U shaped Ultra leather dinette offering seating for up to 6 guests is thoughtfully situated port side. Keeping functionality in mind, storage space is concealed underneath the cushions. Positioned center of the seating, a convertible pedestal burlwood trimmed table allows the choice of a compact table or an expanded table -twice the size- providing more space for comfortable dining. To enhance the dining/ living experience, ample forward and port windows provide an abundance of natural light. Additional lighting is available via two halogen ceiling lights.
- This area was just recently carpeted.

## Companionway

---

- A semi-curved ten step, newly carpeted, LED lighted stairway leads the way to many compartments below including the forward VIP, guest and master cabins as well as a fully equipped laundry room containing separate Kenmore washer and dryer.

## Master Cabin

---

- Amidship at the end of the long companionway, in the widest part of the boat, a beautiful, spacious Master Stateroom is found. As you make your entrance through a double burlwood door a King size berth is positioned right in front. Light it up! Rope lights beautifully embrace and light up the bottom of the berth. Complete comfort! The newly upholstered headboard is flanked by two curved backlit burlwood panels. Superior to the berth is bi-level soffit with the uppermost level mirrored and decorated with four halogen mini spots. Two of the mini lights are perfect for reading your favorite literature!
- For added style and elegance, each side of the berth contains a nightstand with light switches and built in phone outlets. Intelligently placed, a lacquered finish entertainment center contains a built in 20" Haier LCD TV with a built in DVD player and a Direct TV Sat receiver. Just below are two cabinet doors.
- A beautiful (perfect for her!) vanity comes with a swing out stool, 1 centerline drawer and 4 large drawers (2 forward, 2 aft). On top of the vanity is a mirrored panel and higher above are two oversize stainless steel portholes decorated with Roman Shades. Subsequent aft, a twin door cedar lined auto lit hanging locker proceeded a walk in closed containing twin hanging rods and a tri-door cabinet with three shelves and a shore rack. Bringing attention to detail, the entire closet is cedar lined, carpeted and beautifully lit from above.
- A lacquer finish chest with a burlwood top contains six storage drawers. Above is a mirrored panel along with two opening stainless steel portholes tastefully decorated with Roman shades. An additional twin door, cedar lined auto lit hanging locker is located further aft.
- In the master cabin, a burlwood entry door leads the way into the master head.
- Additional features in this cabin include built in cabinets, port and starboard AC delivery

valances, a CO2 detector, Vimar built in digital alarm clock, 9 halogen mini spots and a central vac outlet.

- All bedspreads, shams, throw pillows, Roman shades, valances, headboards and vanity stools are either new or were upholstered in November of 2013.

## Master Head

---

- The master head's style and size is impressive! The marble tile floor perfectly matches the counter tops. A starboard side outboard vanity contains six drawers and two mirrored cabinets flanking a stainless steel porthole (which can be opened) and is decorated with a Duette shade. Extending inboard, the vanity has a very attractive granite counter top, china sinks with two double door bow front cabinets under each sink and a mirrored area above.
- The master head includes a Head Hunter Royal Flush head, a Jacuzzi type tub/shower with a tapered glass door, a handheld/wall mountable Grohe fixture, an exhaust and lights.
- For the illusion of an even more spacious area, the overhead is mirrored throughout. There are ten halogen mini spots, ample outlets and two tone fixtures.

## VIP Suite

---

- Centerline in the VIP suite is a queen size berth containing drawers underneath and eloquently lined with rope lighting. The newly upholstered headboard contains a valance style a/c delivery system superior to the berth. Recently carpeted steps comfortably lead the way -from both port and starboard sides- up to the berth.
- The superior port side of the VIP contains seven lacquered finish cabinets conveniently paired with a brass reading light, a double hanging locker with cedar lining.
- An auto light contains two drawers below and provides generous space to neatly store your belonging.
- Three large storage cabinets and a built in 14' Toshiba flat panel television -with built in DVD player are found in the aft bulkhead.
- Starboard in the VIP cabin, a nightstand shelf provides additional storage. A full size, twin door, cedar lined hanging locker conveniently has an auto light. Furthermore, the leading aft companionway -still inside the suite- contains six additional storage eye level cabinets, the VIP Head entrance and two additional access hatches leading to the bilge storage. An additional access hatch provides an entrance to the bow thruster compartment.
- Additional items found in this room include: an overhead Bomar deck hatch with an Ocean Air sliding screen & shade, a central vacuum outlet, digital AC controls, a vimar digital alarm clock and eight overhead halogen mini spots.

## VIP Head

---

- Located within the VIP suite

- The bow front lacquered finished vanity contains two cabinet doors underneath and an Avonite counter top with an under mount china sink and two tone fixtures above. Above the counter are four mirrored hinged medicine cabinets. The VIP Head is a full size model with a Hunter Royal Flush.
- The VIP shower has a clear glass tapered glass door, a light, an exhaust fan and a handheld/wall mountable Grohe fixture.
- Three mini halogen spots and rope lighting help light up the head; an overhead mirror instantaneously creates a more spacious appearance.

## Guest Cabin

---

- Subsequent aft to port via the center companionway, the Guest Cabin can be accessed. Twin berths positioned fore and aft are separated by a nightstand containing two stacked drawers.
- In the Soffit above are newly upholstered headboards sit on a large mirrored panel with three halogen lights.
- Below the berths, facing inboard, are three drawers. Above the berth are 11 storage cabinets, next aft a full size cedar lined, auto lit, hanging locker provides additional space for your belongings.
- A Sony 13" TV/VCR combo and a storage cabinet are at the foot of the berth.
- An entrance to the Guest Head is further aft.
- Also within the cabin is a digital AC control, a Vimar alarm clock, two stainless steel opening portholes with full drapes, rope lighting under the berths and behind the porthole valance, a central vacuum outlet and two speakers.
- The doors and horizontal surfaces in the Guest Cabin are gloss burlwood.
- The bedspreads, shams, throw pillows, drapery, headboards and valances are all new (11/13)

## Guest/Day Head

---

- The Guest Head is aft but still within the suite.
- A second door from the main companionway allows it to also serve as a Day Head.
- The bow front lacquered finish vanity has two cabinet doors below an Avonite countertop with an under mount china sink and two tone fixtures.
- Two mirrored medicine cabinets are above.
- The toilet is a Head Hunter flush full size model and the sole is Crema Marofil marble.
- Above the vanity is an opening stainless steel porthole with a shade.
- The stall shower has a clear tempered glass door, a light, exhaust fan, a handheld or wall mountable Grohe fixture and a soap/shampoo dispenser.
- The Head also includes four halogen mini spots, a mirrored overhead and valance type AC delivery.

---

## Laundry Room

---

- The laundry room is located in the companionway opposite to the Guest/Day head and is easily accessed through a burlwood door leading the way to a Kenmore washer, Kenmore dryer and four storage cabinets offering generous storage space and overhead lighting.
- The floor of this area is composed of a beautiful oak laminate.

---

## Lower Helm

---

- A compact lower helm area, situated centerline posterior to a tri-panel windshield- offers an extensive array of amenities suitable for all weather cruising conditions.
- **Equipment includes:**
  - Stainless steel Helm wheel
  - Northstar 961 X D GPS plotter
  - (2) LCD MTU engine monitors
  - Furuno LCD remote radar screen
  - Raymarine ST60 digital depth
  - Raymarine ST60 digital speed
  - Roberston AP22 autopilot control head
  - Icom M127 VHF
  - MTU/Detroit Diesel station activation panel
  - MTU/Detroit Diesel electronic engine controls
  - Fireboy engine override panel
  - (6) Blige pump switches with indicator lights
  - (3) Digital bile pump counters
  - (3) windshield wiper controls with washers
  - Start/Stop buttons
  - KVH Tracphone handset
  - Bennett trim tab controls
  - Sidepower integrated bow and stern thruster controls
  - ACR RCL100 searchlight controls
  - Cabinet for manuals
  - Ritchie 6&rdquo power damp magnetic compass
  - Acrylic plexiglass new corners for lower windshields

---

## Forward Deck

---

- The forward fiberglass nonskid deck features:
  - Raised bulwarks with stainless steel bow rails
  - Bollard type cleats with hawse holes
  - Recessed Maxwell 3500 wineglass with fresh water wash down & up/down deck
  - Hinged cover over anchor gear for safety

- Stainless steel anchor chute
- Bruce 110 lb anchor w/all chain rode
- Lewmar deck hatch to anchor locker
- Sun cushions with Stamoid cover (cover new 2/14)
- Built in deck box on portside house
- Port and starboard side midship boarding gates with door and rail brakes
- Starboard side Galley area entry door
- Black Textulene windshield cover for forward and side windshields
- Dual port and starboard bollard type spring line cleats
- Internal navigation lights
- (4)Stainless steel framed oval cabin side windows port & (4) starboard
- (3)Pantograph windshield wipers and washers
- Delta type Engine Room air intakes on side deck

---

## Hardtop Equipment

---

- ACR RCL 100 searchlight
- Hailer horn
- Large Bomar deck hatch for ventilation

---

## Arch Equipment

---

- Split walk through fiberglass arch
- 6" Open array Furuno radar antenna
- Raymarine Sat TV dome
- Garmin GPS antenna
- Raymarine GPS antenna
- Northstar GPS antenna
- Northstar digital GPS antenna
- (3) VHF antennas
- (2) Stereo speakers
- (2) Stainless steel trimmed overhead lights

---

## Crew Cabin

---

- The Crew Cabin can be accessed through the swim platform door leading to the aft part of the engine room. Two berths are found in here, each containing two drawers and a storage cabinet below. Crew commodities include: Am/FM/CD/radio , stereo, speakers, digital AC control, a DVD player, an Element 22' LCD TV.
- New! The crew area has new vinyl flooring, new vinyl wall covering and new mica storage cabinets.

- Large storage lockers are found in the port and starboard sides of the crew cabin.
- The crew head -located portside- contains a vanity with a single cabinet door underneath the stainless steel sink in a Mica countertop. An electric Raritan Atlantees head is found inside. The stall shower has a curved sliding door wall mountable/ handheld fixture, a light, soap/shampoo dispenser and an exhaust fan.

## Engine Room

---

- 4 Point oil xchanger - mains & generators
- Freshwater spigot w/hose
- Dual Sea Pro 300 Fuel filters for each engine
- Firebox FE 60 lb. 241 fire system
- (2) Main engine CRS 3000 coolant recovery bottles
- Cruise Air Digital tempered water logic control box
- Sea Star hydraulic steering reservoir
- Aircep crankcase ventilation system
- 6 Step Marquipt Tide Ride ladder w/cork steps
- Graphite shaft bonding brushes
- Fiberglass wrapped exhaust , new 2013 \$20,000 from Marine Exhaust, West Palm Beach
- Central vacuum
- (2) 1/2 HP 110V Engine Room blowers
- (2) AC florescent lights
- (4) DC incandescent lights
- (2) Generator coolant recovery bottles
- (2) 72,000 BTU Cruiseair chillers for chilled water AC system
- Windlass breaker in forward bilge
- (2) 30 Gallon Raritan hot water heaters in forward bilge
- (2) Grundfos 110V house water pumps in the forward bilge
- 
- Fuel Tank Follows:
  - 540 gallons forward tank
  - 430 gallons port tank
  - 430 gallons stbd tank
  - (2) Jabster fuel transfer pumps
  - Sea Star power steering\
  - 3" Main shafts replaced w/higher quality stainless steel
  - ZF 2050A 2.029 to 1 transmission ratios
  - Dripless shaft seals (new 2013)
  - (6) Rule bilge pumps
  - Sea Land macerator pump
  - Sleipner Side Power 20 hp 24 volt bow thruster
  - Sleipner Side Power 20 hp 24 volt stern thruster
  - (2) Racor 500 generator

- Workbench w/vise on top of port generator
- Macerator pump with timer
- Seven Step Marquipt Tide Ride ladder
- Five Step Marquipt vertical ladder
- Fuel priming pump
- CCTV Engine Room camera
- Overhead rod storage for (4) rods
- (2) Gas/water separators for generator
- Props and shafts removed & turned 9/13
- NEW NAIAD STABILIZER SYSTEM MODEL 254.7.5 sq . ft. fins w/2 year warranty starting 9/13

## Electrical Systems

---

- 12/24 volts DC electrical system
- 110/220 Volt AC electrical system
- 25 KW Westerbeke Genset in sound cover , approx 2200 hours
- 25 KW Westerbeke Genset in sound cover , approx 2200 hours
- (2) Blue Sea system battery cut off switch
- Parallel for house & engine batteries
- Parallel for bow thruster operating
- Electric panel with:
  - (23) Breaker protected 240 volt double pole circuits
  - (60) Breaker protected 24 volt circuits
  - (48) Breaker protected 120 volt circuits
- Digital DC volt & amp center
- AC digital volt meters
- AC digital amp meters
- Digital frequency meters
- Generator start/stops for both generators
- Water tank gauge at electrical panel
- Waste tank gauge at electrical panel
- Bilge pump alarm at electrical panel
- Cruise Air digital control panel at electrical panel
- Battery switch for bow thruster
- (2) Galvanic isolaters
- (2) 50 amp Glendinning shore cord retractors w/brand new 65" shore cords
- (2) 15KVA 50 amp isolation transformers
- 12 Volt battery with 50 amp charge dedicated for Flybridge electronics at main deck area forward of Galley
- Batteries as follows:
  - Eng (2) 4D 165 Ah (new 11/13)
  - House (4) 8D 235 Ah Gel Cell (new 11/13)

- (2) Group 27 generator start batteries (new 2013)
- Charles C Charger 24V 30 amp charger for bow thruster incl. (2) 4D Gel Cell batteries and a battery shutoff switch plus a DC
- Hold light
- Charles C Charger 15 amp 12 volt generator battery charger
- Charles C charger 30 amp 24 volt engine battery charger
- (2) Mastervolt 24 volt 6000 inverter/charger

## Exclusions

---

- While every effort was made to itemize every pertinent equipment on board, there are a few personal belonging not included with the purchase. Exclusions include the RIB tender and the scooter found on the fly bridge.

## Disclaimer

---

The Company offers the details of this vessel in good faith but cannot guarantee or warrant the accuracy of this information nor warrant the condition of the vessel. A buyer should instruct his agents, or his surveyors, to investigate such details as the buyer desires validated. This vessel is offered subject to prior sale, price change, or withdrawal without notice.

## Исключения

---

При продаже яхты исключаются личные вещи владельца.

## Отказ от ответственности

---

Компания предоставляет описание судна или яхты добросовестно, но не может гарантировать точность этой информации, а также не ручается за техническое состояние. Покупатель должен проинструктировать своих агентов или оценщиков исследовать представленную информацию более подробно, по собственному желанию. Продажа судна или яхты, изменение цены или снятие с продажи будет происходить без предварительного уведомления.



# ФОТОГРАФИИ



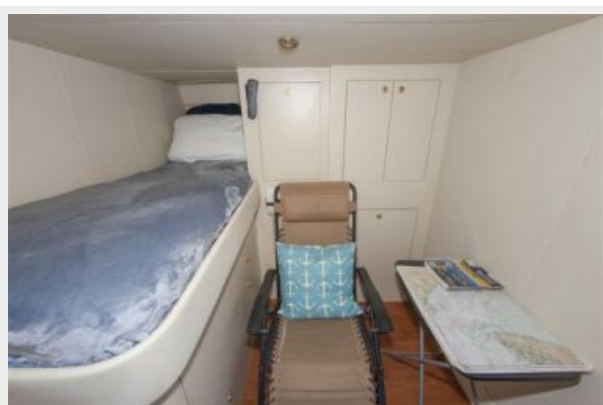
















# КОНТАКТЫ

---

Андрей Шестаков (Andrey Shestakov) – ведущий яхтенный брокер отдела продаж яхт и судов компании Shestakov Yacht Sales Inc. Официальный представитель Shestakov Yacht Sales Inc. для русскоговорящих клиентов в центральном офисе компании в Майами/Форт Лодердейл/Флорида/США.

## Контактная информация

---

Email: [andrey@shestakovyachtsales.com](mailto:andrey@shestakovyachtsales.com)

Web: [shestakovyachtsales.com](http://shestakovyachtsales.com)

## Телефоны

---

Краснодарский край: **+7(918)465-66-44**

США, Майами, Флорида: **+1(954)274-4435**

## Время работы

---

Понедельник – Суббота: **9:00 - 21:00**  
EDT

Воскресенье: **Закрито**

## Адрес

---



Harbour Towne Marina, 850 NE 3rd St,  
STE 213, Dania, FL 33004