

ISLAND TIME — BROWARD



Builder: BROWARD

Year Built: 1991

Model: Motor Yacht

Price: PRICE ON APPLICATION

Location: United States

LOA: 110' 0" (33.53m)

Beam: 20' 7" (6.27m)

Min Draft: 5' 7" (1.70m)

Cruise Speed: 14 Kts. (16 MPH)

Max Speed: 16 Kts. (18 MPH)

Our experienced yacht broker, Andrey Shestakov, will help you choose and buy a yacht that best suits your needs **ISLAND TIME — BROWARD** from our catalogue. Presently, at Shestakov Yacht Sales Inc., we have a wide variety of yachts available on our sale's list. We also work in close contact with all the big yacht manufacturers from all over the world.

If you would like to buy a yacht **ISLAND TIME — BROWARD** or would like help answering any questions concerning purchasing, selling or chartering a yacht, please call **+1(954)274-4435**

TABLE OF CONTENTS

TABLE OF CONTENTS	2
SPECIFICATIONS	4
Overview	4
Basic Information	5
Dimensions	5
Speed, Capacities and Weight	5
Accommodations	5
Hull and Deck Information	5
Engine Information	6
DETAILED INFORMATION	7
Accommodations	7
Salon	7
Dining	8
Galley	8
Master Stateroom	8
VIP Stateroom	8
Guest Stateroom Aft	8
Guest Stateroom Forward	9
Captains Quarters	9
Crew Quarters	9
Cockpit	9
Fly Bridge	9
Aft Deck	10
Deck Equipment	10
Electrical Systems	10
Electronics and Navigational Equipment	10
Engine / Mechanical Equipment	10
Hull	11

Refit Details	11
Remarks	11
Exclusions	12
Disclaimer	12
PHOTOS	13
Salon	13
Dining	13
King Master	13
Master Desk	13
Queen VIP	13
Twin with Pullman	13
Aft Deck	14
Convertible Twin with Pullman	14
Flybridge	14
Flybridge Aft	14
Layout	14
Flybridge Dining	14
CONTACTS	15
Contact details	15
Telephones	15
Office hours	15
Address	15

SPECIFICATIONS

Overview

"Island Time" accommodates up to 10 guests in a four stateroom layout along with four crew in two cabins.

On the main deck forward, the country style kitchen offers a built in sette with three separate slide under seats for informal meals and gatherings. Separated from the working area of the galley by a large center island, the galley offers every appliance necessary for creating culinary delights along with generous storage cabinets and Corian counter tops. Moving aft along the companionway, a day head/powder room is inboard, followed by access to the raised pilothouse. The pilothouse offers an observation lounge area with more than ample chart and equipment storage. A stairway offers access to the flybridge from the pilothouse. Further aft along the companionway is the main salon and dining area, taking advantage of the full beam of the yacht. The forward dining area offers seating for 10 with built in cabinetry for china and cutlery along with a under counter refrigerator and icemaker under a large credenza style buffet. The salon features newly installed flooring, a brand new 2014 wrap-around leather sofa lounge, cocktail ottoman with storage, and leather ottoman chairs, bar with two bar chairs and built in entertainment center with drop down, pop up, 42" plasma TV with surround sound and entertainment electronics. Access to the aft deck and cockpit is through the center door with seating and dining Al Fresco for up to 10 with new Sea Strike wooden yacht table with foldable leaf. All new carpet covers floor on aft deck and newly painted non skid is on cockpit floor and swim platform. The 12' cockpit with integral swim platform and jacuzzi with waterfall and lighting, offers safe and convenient access to the water toys and for swimming. A stairway to starboard of the salon's built in entertainment center leads to the owner's and guest's stateroom below deck. The master/owner's stateroom is forward with an island King berth, built in settee and his and hers bath with jacuzzi tub and new Flat Screen TV/DVD. All new bed and bath linens, new wood floors in bathroom and new carpet in master. The VIP guest stateroom features an island Queen berth along with hanging lockers, drawer storage, new Flat Screen TV/DVD, stereo and CD players, all new bed and bath linens, new wood floors in bathroom and new carpet in VIP.. The guest staterooms offer ensuite baths with stall showers, vanities with sink, storage and Microphor heads. Both have new wood floors in bathrooms and new carpet in rooms. All new linens for bed and bath. The companionway to these staterooms also house a full size new washer and dryer with separate linen locker and new flooring. The flybridge offers another fully equipped helm and wing station, observation bench and chaise and sunning lounges. A wet bar with chest freezer is incorporated into the bench seat. A rigid bimini top covers the entire seating space in the flybridge.

Basic Information

Category: Motor Yacht

Sub Category: Raised Pilothouse

Model Year: 1991

Year Built: 1991

Refit Year: 2014

Refit Type: Freshly Painted & Complete Interior Refit

Country: United States

Vessel Top: Raised Pilothouse

Fly Bridge: Yes

Cockpit: Yes

Dimensions

LOA: 110' 0" (33.53m)

Beam: 20' 7" (6.27m)

Min Draft: 5' 7" (1.70m)

Speed, Capacities and Weight

Cruise Speed: 14 Kts. (16 MPH)

Max Speed: 16 Kts. (18 MPH)

Displacement: 149000 Pounds

Water Capacity: 1000 Gallons

Fuel Capacity: 8000 Gallons

Accommodations

Total Cabins: 4

Sleeps: 10

Crew Cabin: 2

Crew Sleeps: 4

Hull and Deck Information

Hull Material: Aluminum

Hull Color: Blue

Engine Information

Engines: 2

Manufacturer: Detroit Diesel

Model: 12V92-TA

Engine Type: Inboard

Fuel Type: Diesel

DETAILED INFORMATION

Accommodations

"Island Time" accommodates up to 10 guests in a four stateroom layout along with four crew in two cabins.

On the main deck forward, the country style kitchen offers a built in sette with three separate slide under seats for informal meals and gatherings. Separated from the working area of the galley by a large center island, the galley offers every appliance necessary for creating culinary delights along with generous storage cabinets and Corian counter tops. Moving aft along the companionway, a day head/powder room is inboard, followed by access to the raised pilothouse. The pilothouse offers an observation lounge area with more than ample chart and equipment storage. A stairway offers access to the flybridge from the pilothouse. Further aft along the companionway is the main salon and dining area, taking advantage of the full width of the yacht. The forward dining area offers seating for 10 with built in cabinetry for china and cutlery along with a undercounter refrigerator and icemaker under a large credenza style buffet. The salon features a new 2014 wrap around leather sofa lounge, cocktail ottoman with storage, and leather ottoman chairs, bar with two bar chairs and built in entertainment center with drop down, pop up, 42" plasma TV with surround sound and entertainment electronics. Access to the aft deck and cockpit is through the center door with seating and dining Al Fresco for up to 10 with new Sea Strike wooden yacht table with foldable leaf. All new carpet covers floor on aft deck and newly painted non skid is on cockpit floor and swim platform. The 12' cockpit with integral swim platform and jacuzzi with waterfall and lighting, offers safe and convenient access to the water toys and for swimming. A stairway to starboard of the salon's built in entertainment center leads to the owner's and guest's stateroom below deck. The master/owner's stateroom is forward with an island King berth, built in settee and his and hers bath with jacuzzi tub and new Flat Screen TV/DVD. All new bed and bath linens, new wood floors in bathroom and new carpet in master. The VIP guest stateroom features an island Queen berth along with hanging lockers, drawer storage, new Flat Screen TV/DVD, stereo and CD players, all new bed and bath linens, new wood floors in bathroom and new carpet in VIP.. The guest staterooms offer ensuite baths with stall showers, vanities with sink, storage and Microphor heads. Both have new wood floors in bathrooms and new carpet in rooms. All new linens for bed and bath. The companionway to these staterooms also house a full size new washer and dryer with separate linen locker and new flooring. The flybridge offers another fully equipped helm and wing station, observation bench and chaise and sunning lounges. A wet bar with chest freezer is incorporated into the bench seat. A rigid bimini top covers the entire seating space in the flybridge.

Salon

New main salon furniture ('14) New dining room table (seats 10) ('14) New Bar with two bar stools ('14) Built in pop up 42" plasma TV Entertainment center with electronics Wet bar forward

w/sink, refrigerator & icemaker Custom cabinetry with china, stemware and cutlery storage. Custom window valances Custom wallcoverings throughout the yacht Scotman's refrigerator Scotman's undercounter icemaker

Dining

New wooden dining table seating for 10 with 8 chairs ('14) (2 chairs pulled from other area)

Galley

Country kitchen custom upholstered settee ('14) w/ 3 new chairs ('14) Undercounter refrigerator in island ('08) Stainless Steel double door side by side Frigidaire refrigerator and freezer ('10) 4 burner, glass top stainless steel Frigidaire range with convection oven Stainless Steel Frigidaire dishwasher ('10) Stainless Steel Frigidaire trash compactor ('10) Stainless Frigidaire microwave ('09) Corian counter tops, white Large center island with large working area and storage 20" Flat Screen TV/DVD ('07) Mirrored Cabinet fronts on bulkhead ('07) Custom valances and wall covering ('07) Frigidaire garbage disposal Aqua Pure filtered water Additional undercounter refrigerator ('11)

Master Stateroom

Center Island King bed with Temperpedic mattress w/storage below Custom upholstered headboard w/coordinating bedspread Shoji screens Built in dresser (2) nightstands Built in vanity w/ mirror Entertainment center with Flat Screen TV/DVD Built in upholstered settee Cedar lined walk in closet His and hers bath with jacuzzi tub, shower and vanities

VIP Stateroom

Center Island queen bed w/ storage below Custom upholstered headboard & coordinating bedspread ('14) Built in dresser and nightstand 20" Flat Screen TV/DVD ('12) Hanging locker Shoji screens Private bath w/ shower

Guest Stateroom Aft

Twin berths w/ storage below & Custom spreads ('14) Pullman berth Built in dresser Shoji Screens Flat Screen TV/DVD Private bath w/ shower

Guest Stateroom Forward

Twin berths w/storage below & custom spreads ('14) Built in dresser Pullman Berth Shoji Screens Private bath w/ shower Flat Screen TV/DVD NOTE: Single berth is slide out and converts to king if needed.

Captains Quarters

Queen size double berth with storage below, ensuite head with shower.

NOTE: This has been a conversion, if needed - additional crew could sleep in the additional upper and lower berths in this room.

Crew Quarters

Two berths forward with drawers and storage below. Separate head with shower and vanity.

Cockpit

New stainless steel double Fire Magic grill w/cover New Jacuzzi with waterfall and nightlighting Rod Holders Transom door Swim platform w/ dive ladder Cockpit lights Bollard Cleats Sink w/ hot and cold water Storage and lazzerette Ideal windlass, centerline Reverse style transom

New cockpit carpet ('10)

Fly Bridge

Fully equipped helm station Wing Station Bench seating w/ new cushions ('14) Folding chairs w/ new cushions ('14) Built-in triangular dining table (seats 10) Chaise and sun lounges w/ new cushions ('14) Chest freezer incorporated into bench seat Rigid Bimini Top New Garmin 3210 Chartplotter

Aft Deck

New Sea Strike Custom wooden table with drop down leaf - seats 10 Aft deck carpeting ('14)
 Built in bench seating with new upholstery ('14) Aft deck cockpit sunshade Cabinet with
 refrigerator Ideal hydraulic vertical capstan

Deck Equipment

(2) 2011 Yamaha VX Cruisers Jet Skis Marquipt 2000 lb davit rebuilt ('14) Stainless steel
 stanchions and rails 1 bruce type 80 kg anchor Aluminum bowsprit with internal roller
 Danforth S3000 spare anchor w/ 1/2", 250ft chain Large storage boxes Oversized sunpads
 w/cushions (bow) Ideal hydraulic vertical capstan Wildcat windlass rebuilt Aluminum boarding
 ladder Oversized cockpit w/ integral swim platform

Electrical Systems

Twin Cummins 35kw Generators Pro Mariner 24/40 amp Pro Mariner SS8G 80 amp 12v (6) 8D
 gel cell batteries ('09) Emergency electronic controls (2) 100 amp connection Over current
 protection (2) transformers in engine room Branch panel breakers Voltage @ampage analog
 guages Hubbell Smart Y 50a/100/200 adapter

Electronics and Navigational Equipment

Nobeltec Furuno 1510 48 mile radar Robertson AP 10 autopilot Delta Marine speed log
 Datamarine depthsounder Simrad RGC 11 gyro compass (2) Danforth 6" compasses New
 Standard Horizon VLH 3000 hailer (2) Icom M502 VHF ABI spotlight Closed circuit monitor
 system Cellular 6 watt phone Barometer & Clock 19" Flat Screen Navigation Monitor Under
 water camera Upgraded digitized Naiad Stabilizers

New KVH Sat TV System ('10)

Engine / Mechanical Equipment

Port generator completely rebuilt November 2010 Complete rebuild on both engines in '04 New
 refridgerator Model PF-SS2MI-SXASS New dishwasher GE-GSD4060R00SS Multisea
 stabilizers w/ 12' fins (upgraded and digitized) American bow thruster Hynautic controls Marine
 Exhaust silicon flexible hoses Auto/manual engine shut off Delta T flow vent system (6)

Auto/manual bilge pumps w/engine impeller on manifold w/valve (1) AC motor pump and manifold system Fiberglass mufflers New exhaust system - replaced turbos Replaced raw water strainers New shaft bearings and alignment (2) Fire stations 5 Grey water pumps Custom drip pans (1) Sea Recovery desalinator 1200 gpd Additional new washer/dryer located in engine room ('07) (1) new SK 1500 gallon per day

Hull

New Flagship Blue Hull Paint ('14) Veritas class provides thicker hull plating and additional structural framing throughout the hull. (31) Ocean LED blue underwater LED lights bow to stern ('07)

Refit Details

1. New Blue Hull Paint Job – October , 2014
2. New Interior Flooring and Carpeting throughout entire yacht
3. All new Furnishings throughout entire yacht
4. All new Soft Goods, linens, Bedding, etc.
5. New Washer / Dryer
6. New Water Heaters
7. New A/C Chillers
8. Rebuilt Davit October 2014
9. New Stainless Steel Fridge Double door
10. Spare Props and Shaft
11. New Flat Screen TV's throughout
12. New Carpet on Aft Deck and Flybridge 13. New Anchor Chain

Remarks

Island Time represents a rare, Veritas class built, four stateroom Broward. Powered by Detroit 12V92TA's, she cruises at 14 knots and tops out at 16 while carrying 8000 gallons of fuel providing for extended cruising. She operates at affordable fuel consumption of 40 gallons per hour. Additional amenities include a large open salon, aft deck, cockpit and flybridge. Her new

tropical inspired decor is tastefully done in neutral tones and includes a hi-lo new 42" plasma TV in the salon. This is a proven money maker with an excellent 8 year charter following in the Bahamas and an average of \$850,000 annual gross income.

The boat was manufactured in 1991 but not delivered until 1994.

Exclusions

Owner's personal belongings.

Disclaimer

The Company offers the details of this vessel or yacht in good faith but cannot guarantee or warrant the accuracy of this information nor warrant the condition of the vessel. A buyer should instruct his representatives, agents, or his surveyors, to investigate such details as the buyer desires validated. This vessel or yacht is offered subject to prior sale, price change, or withdrawal without notice.

PHOTOS

Salon



Dining



King Master



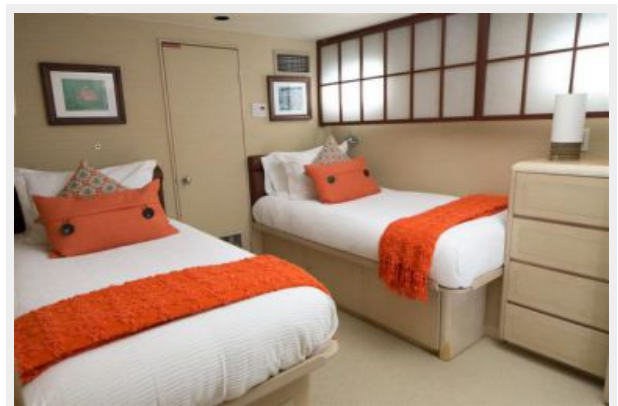
Master Desk



Queen VIP



Twin with Pullman



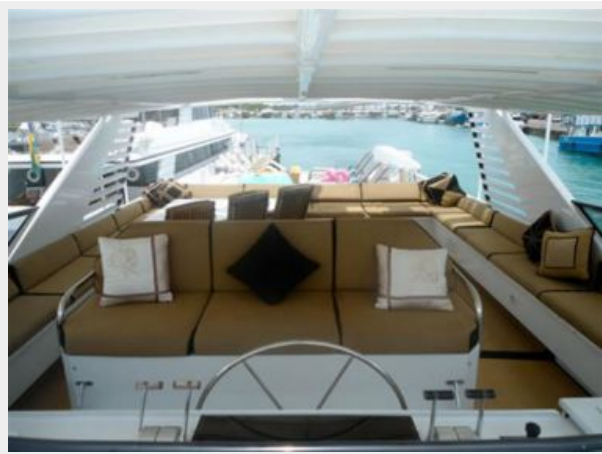
Convertible Twin with Pullman



Aft Deck



Flybridge



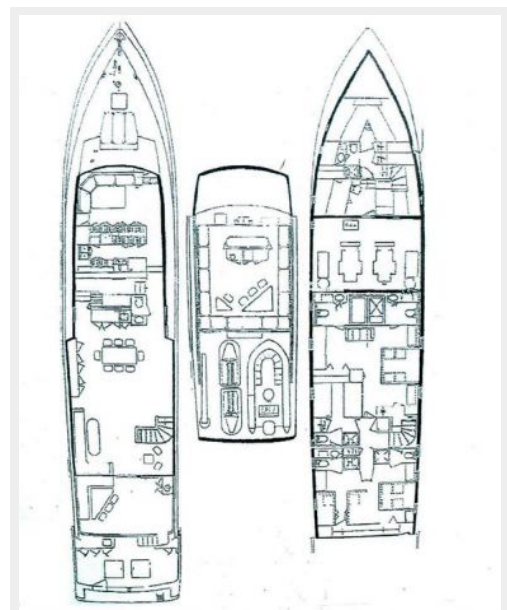
Flybridge Aft



Flybridge Dining



Layout



CONTACTS

Andrey Shestakov, leading yacht broker of the sales department of Shestakov Yacht Sales Inc. Shestakov Yacht Sales Inc., the official representative of the Miami/Fort Lauderdale FL headquarters.

Contact details

Email: andrey@shestakovyachtsales.com

Web: shestakovyachtsales.com/en/

Telephones

USA: +1(954)274-4435

Office hours

Monday – Saturday: **9:00 - 21:00** EDT

Sunday: **closed**

Address



Harbour Towne Marina, 850 NE 3rd St,
STE 213, Dania, FL 33004