

## ISLAND TIME — BROWARD



**Судостроитель:** BROWARD

**Год постройки:** 1991

**Модель:** Моторная яхта

**Цена:** ЦЕНА ЯХТЫ ПО ЗАПРОСУ

**Местонахождение:** United States

**Длина общая:** 110' 0" (33.53m)

**Ширина:** 20' 7" (6.27m)

**Мин. осадка:** 5' 7" (1.70m)

**Крейс. скорость:** 14 Kts. (16 MPH)

**Макс. скорость:** 16 Kts. (18 MPH)

Купить **ISLAND TIME — BROWARD** а также выбрать подходящую вам яхту из нашего каталога яхт вам поможет опытный яхтенный брокер Андрей Шестаков. На сегодняшний день компания **Shestakov Yacht Sales Inc.** имеет большое количество яхт в собственном списке продаж, а также тесно сотрудничает со всеми крупными яхтенными производителями по всему миру.

Для того чтобы купить яхту **ISLAND TIME — BROWARD** а также проконсультироваться по любому вопросу связанному с покупкой, продажей, чартером яхт позвоните по телефону **+7(918)465-66-44**.

# ОГЛАВЛЕНИЕ

ОГЛАВЛЕНИЕ	2
ХАРАКТЕРИСТИКИ	4
Обзор	4
Основная информация	5
Размеры	5
Скорость, вместимость и масса	5
Размещение	5
Корпус и палуба	5
Информация о двигателе	6
ПОДРОБНОЕ ОПИСАНИЕ	7
Accommodations	7
Salon	7
Dining	8
Galley	8
Master Stateroom	8
VIP Stateroom	8
Guest Stateroom Aft	8
Guest Stateroom Forward	9
Captains Quarters	9
Crew Quarters	9
Cockpit	9
Fly Bridge	9
Aft Deck	10
Deck Equipment	10
Electrical Systems	10
Electronics and Navigational Equipment	10
Engine / Mechanical Equipment	10
Hull	11

---

Refit Details	11
Remarks	11
Исключения	12
Отказ от ответственности	12
<b>ФОТОГРАФИИ</b>	<b>13</b>
Salon	13
Dining	13
King Master	13
Master Desk	13
Queen VIP	13
Twin with Pullman	13
Aft Deck	14
Convertible Twin with Pullman	14
Flybridge	14
Flybridge Aft	14
Layout	14
Flybridge Dining	14
<b>КОНТАКТЫ</b>	<b>15</b>
Контактная информация	15
Телефоны	15
Время работы	15
Адрес	15

# ХАРАКТЕРИСТИКИ

## Обзор

"Island Time" accommodates up to 10 guests in a four stateroom layout along with four crew in two cabins.

On the main deck forward, the country style kitchen offers a built in sette with three separate slide under seats for informal meals and gatherings. Separated from the working area of the galley by a large center island, the galley offers every appliance necessary for creating culinary delights along with generous storage cabinets and Corian counter tops. Moving aft along the companionway, a day head/powder room is inboard, followed by access to the raised pilothouse. The pilothouse offers an observation lounge area with more than ample chart and equipment storage. A stairway offers access to the flybridge from the pilothouse. Further aft along the companionway is the main salon and dining area, taking advantage of the full beam of the yacht. The forward dining area offers seating for 10 with built in cabinetry for china and cutlery along with a under counter refrigerator and icemaker under a large credenza style buffet. The salon features newly installed flooring, a brand new 2014 wrap-around leather sofa lounge, cocktail ottoman with storage, and leather ottoman chairs, bar with two bar chairs and built in entertainment center with drop down, pop up, 42" plasma TV with surround sound and entertainment electronics. Access to the aft deck and cockpit is through the center door with seating and dining Al Fresco for up to 10 with new Sea Strike wooden yacht table with foldable leaf. All new carpet covers floor on aft deck and newly painted non skid is on cockpit floor and swim platform. The 12' cockpit with integral swim platform and jacuzzi with waterfall and lighting, offers safe and convenient access to the water toys and for swimming. A stairway to starboard of the salon's built in entertainment center leads to the owner's and guest's stateroom below deck. The master/owner's stateroom is forward with an island King berth, built in settee and his and hers bath with jacuzzi tub and new Flat Screen TV/DVD. All new bed and bath linens, new wood floors in bathroom and new carpet in master. The VIP guest stateroom features an island Queen berth along with hanging lockers, drawer storage, new Flat Screen TV/DVD, stereo and CD players, all new bed and bath linens, new wood floors in bathroom and new carpet in VIP.. The guest staterooms offer ensuite baths with stall showers, vanities with sink, storage and Microphor heads. Both have new wood floors in bathrooms and new carpet in rooms. All new linens for bed and bath. The companionway to these staterooms also house a full size new washer and dryer with separate linen locker and new flooring. The flybridge offers another fully equipped helm and wing station, observation bench and chaise and sunning lounges. A wet bar with chest freezer is incorporated into the bench seat. A rigid bimini top covers the entire seating space in the flybridge.

## Основная информация

<b>Тип судна:</b> Моторная яхта	<b>Подкатегория:</b> Raised Pilothouse
<b>Модельный год:</b> 1991	<b>Год постройки:</b> 1991
<b>Год обновления:</b> 2014	<b>Вид обновления:</b> Freshly Painted & Complete Interior Refit
<b>Страна:</b> United States	<b>Верх:</b> Raised Pilothouse
<b>Открытая палуба мостика:</b> Да	<b>Кубрик:</b> Да

## Размеры

<b>Длина общая:</b> 110' 0" (33.53m)	<b>Ширина:</b> 20' 7" (6.27m)
<b>Мин. осадка:</b> 5' 7" (1.70m)	

## Скорость, вместимость и масса

<b>Крейс. скорость:</b> 14 Kts. (16 MPH)	<b>Макс. скорость:</b> 16 Kts. (18 MPH)
<b>Водоизмещение:</b> 149000 Pounds	<b>Вместимость воды:</b> 1000 Gallons
<b>Объем топливного бака:</b> 8000 Gallons	

## Размещение

<b>Всего кают:</b> 4	<b>Спальные места:</b> 10
<b>Каюты экипажа:</b> 2	<b>Спальных мест экипажа:</b> 4

## Корпус и палуба

<b>Материал корпуса:</b> Aluminum	<b>Цвет корпуса:</b> Blue
-----------------------------------	---------------------------

## Информация о двигателе

---

**Двигатели:** 2

**Производитель:** Detroit Diesel

**Модель:** 12V92-TA

**Тип двигателя:** Inboard

**Тип топлива:** Diesel

---

# ПОДРОБНОЕ ОПИСАНИЕ

---

## Accommodations

---

"Island Time" accommodates up to 10 guests in a four stateroom layout along with four crew in two cabins.

On the main deck forward, the country style kitchen offers a built in sette with three separate slide under seats for informal meals and gatherings. Separated from the working area of the galley by a large center island, the galley offers every appliance necessary for creating culinary delights along with generous storage cabinets and Corian counter tops. Moving aft along the companionway, a day head/powder room is inboard, followed by access to the raised pilothouse. The pilothouse offers an observation lounge area with more than ample chart and equipment storage. A stairway offers access to the flybridge from the pilothouse. Further aft along the companionway is the main salon and dining area, taking advantage of the full width of the yacht. The forward dining area offers seating for 10 with built in cabinetry for china and cutlery along with a undercounter refrigerator and icemaker under a large credenza style buffet. The salon features a new 2014 wrap around leather sofa lounge, cocktail ottoman with storage, and leather ottoman chairs, bar with two bar chairs and built in entertainment center with drop down, pop up, 42" plasma TV with surround sound and entertainment electronics. Access to the aft deck and cockpit is through the center door with seating and dining Al Fresco for up to 10 with new Sea Strike wooden yacht table with foldable leaf. All new carpet covers floor on aft deck and newly painted non skid is on cockpit floor and swim platform. The 12' cockpit with integral swim platform and jacuzzi with waterfall and lighting, offers safe and convenient access to the water toys and for swimming. A stairway to starboard of the salon's built in entertainment center leads to the owner's and guest's stateroom below deck. The master/owner's stateroom is forward with an island King berth, built in settee and his and hers bath with jacuzzi tub and new Flat Screen TV/DVD. All new bed and bath linens, new wood floors in bathroom and new carpet in master. The VIP guest stateroom features an island Queen berth along with hanging lockers, drawer storage, new Flat Screen TV/DVD, stereo and CD players, all new bed and bath linens, new wood floors in bathroom and new carpet in VIP.. The guest staterooms offer ensuite baths with stall showers, vanities with sink, storage and Microphor heads. Both have new wood floors in bathrooms and new carpet in rooms. All new linens for bed and bath. The companionway to these staterooms also house a full size new washer and dryer with separate linen locker and new flooring. The flybridge offers another fully equipped helm and wing station, observation bench and chaise and sunning lounges. A wet bar with chest freezer is incorporated into the bench seat. A rigid bimini top covers the entire seating space in the flybridge.

---

## Salon

---

New main salon furniture ('14) New dining room table (seats 10) ('14) New Bar with two bar stools ('14) Built in pop up 42" plasma TV Entertainment center with electronics Wet bar forward

w/sink, refrigerator & icemaker Custom cabinetry with china, stemware and cutlery storage. Custom window valances Custom wallcoverings throughout the yacht Scotman's refrigerator Scotman's undercounter icemaker

---

## Dining

---

New wooden dining table seating for 10 with 8 chairs ('14) (2 chairs pulled from other area)

---

## Galley

---

Country kitchen custom upholstered settee ('14) w/ 3 new chairs ('14) Undercounter refrigerator in island ('08) Stainless Steel double door side by side Frigidaire refrigerator and freezer ('10) 4 burner, glass top stainless steel Frigidaire range with convection oven Stainless Steel Frigidaire dishwasher ('10) Stainless Steel Frigidaire trash compactor ('10) Stainless Frigidaire microwave ('09) Corian counter tops, white Large center island with large working area and storage 20" Flat Screen TV/DVD ('07) Mirrored Cabinet fronts on bulkhead ('07) Custom valances and wall covering ('07) Frigidaire garbage disposal Aqua Pure filtered water Additional undercounter refrigerator ('11)

---

## Master Stateroom

---

Center Island King bed with Temperpedic mattress w/storage below Custom upholstered headboard w/coordinating bedspread Shoji screens Built in dresser (2) nightstands Built in vanity w/ mirror Entertainment center with Flat Screen TV/DVD Built in upholstered settee Cedar lined walk in closet His and hers bath with jacuzzi tub, shower and vanities

---

## VIP Stateroom

---

Center Island queen bed w/ storage below Custom upholstered headboard & coordinating bedspread ('14) Built in dresser and nightstand 20" Flat Screen TV/DVD ('12) Hanging locker Shoji screens Private bath w/ shower

---

## Guest Stateroom Aft

---



Twin berths w/ storage below & Custom spreads ('14) Pullman berth Built in dresser Shoji Screens Flat Screen TV/DVD Private bath w/ shower

---

## Guest Stateroom Forward

---

Twin berths w/storage below & custom spreads ('14) Built in dresser Pullman Berth Shoji Screens Private bath w/ shower Flat Screen TV/DVD NOTE: Single berth is slide out and converts to king if needed.

---

## Captains Quarters

---

Queen size double berth with storage below, ensuite head with shower.

NOTE: This has been a conversion, if needed - additional crew could sleep in the additional upper and lower berths in this room.

---

## Crew Quarters

---

Two berths forward with drawers and storage below. Separate head with shower and vanity.

---

## Cockpit

---

New stainless steel double Fire Magic grill w/cover New Jacuzzi with waterfall and nightlighting Rod Holders Transom door Swim platform w/ dive ladder Cockpit lights Bollard Cleats Sink w/ hot and cold water Storage and lazzerette Ideal windlass, centerline Reverse style transom

New cockpit carpet ('10)

---

## Fly Bridge

---

Fully equipped helm station Wing Station Bench seating w/ new cushions ('14) Folding chairs w/ new cushions ('14) Built-in triangular dining table (seats 10) Chaise and sun lounges w/ new cushions ('14) Chest freezer incorporated into bench seat Rigid Bimini Top New Garmin 3210 Chartplotter

---

## Aft Deck

---

New Sea Strike Custom wooden table with drop down leaf - seats 10 Aft deck carpeting ('14)  
Built in bench seating with new upholstery ('14) Aft deck cockpit sunshade Cabinet with  
refrigerator Ideal hydraulic vertical capstan

---

## Deck Equipment

---

(2) 2011 Yamaha VX Cruisers Jet Skis Marquipt 2000 lb davit rebuilt ('14) Stainless steel  
stanchions and rails 1 bruce type 80 kg anchor Aluminum bowsprit with internal roller  
Danforth S3000 spare anchor w/ 1/2", 250ft chain Large storage boxes Oversized sunpads  
w/cushions (bow) Ideal hydraulic vertical capstan Wildcat windlass rebuilt Aluminum boarding  
ladder Oversized cockpit w/ integral swim platform

---

## Electrical Systems

---

Twin Cummins 35kw Generators Pro Mariner 24/40 amp Pro Mariner SS8G 80 amp 12v (6) 8D  
gel cell batteries ('09) Emergency electronic controls (2) 100 amp connection Over current  
protection (2) transformers in engine room Branch panel breakers Voltage @ampage analog  
guages Hubbell Smart Y 50a/100/200 adapter

---

## Electronics and Navigational Equipment

---

Nobeltec Furuno 1510 48 mile radar Robertson AP 10 autopilot Delta Marine speed log  
Datamarine depthsounder Simrad RGC 11 gyro compass (2) Danforth 6" compasses New  
Standard Horizon VLH 3000 hailer (2) Icom M502 VHF ABI spotlight Closed circuit monitor  
system Cellular 6 watt phone Barometer & Clock 19" Flat Screen Navigation Monitor Under  
water camera Upgraded digitized Naiad Stabilizers

New KVH Sat TV System ('10)

---

## Engine / Mechanical Equipment

---

Port generator completely rebuilt November 2010 Complete rebuild on both engines in '04 New  
refridgerator Model PF-SS2MI-SXASS New dishwasher GE-GSD4060R00SS Multisea  
stabilizers w/ 12' fins (upgraded and digitized) American bow thruster Hynautic controls Marine  
Exhaust silicon flexible hoses Auto/manual engine shut off Delta T flow vent system (6)

Auto/manual bilge pumps w/engine impeller on manifold w/valve (1) AC motor pump and manifold system Fiberglass mufflers New exhaust system - replaced turbos Replaced raw water strainers New shaft bearings and alignment (2) Fire stations 5 Grey water pumps Custom drip pans (1) Sea Recovery desalinator 1200 gpd Additional new washer/dryer located in engine room ('07) (1) new SK 1500 gallon per day

## Hull

---

New Flagship Blue Hull Paint ('14) Veritas class provides thicker hull plating and additional structural framing throughout the hull. (31) Ocean LED blue underwater LED lights bow to stern ('07)

## Refit Details

---

1. New Blue Hull Paint Job – October , 2014
2. New Interior Flooring and Carpeting throughout entire yacht
3. All new Furnishings throughout entire yacht
4. All new Soft Goods, linens, Bedding, etc.
5. New Washer / Dryer
6. New Water Heaters
7. New A/C Chillers
8. Rebuilt Davit October 2014
9. New Stainless Steel Fridge Double door
10. Spare Props and Shaft
11. New Flat Screen TV's throughout
12. New Carpet on Aft Deck and Flybridge 13. New Anchor Chain

## Remarks

---

Island Time represents a rare, Veritas class built, four stateroom Broward. Powered by Detroit 12V92TA's, she cruises at 14 knots and tops out at 16 while carrying 8000 gallons of fuel providing for extended cruising. She operates at affordable fuel consumption of 40 gallons per hour. Additional amenities include a large open salon, aft deck, cockpit and flybridge. Her new

tropical inspired decor is tastefully done in neutral tones and includes a hi-lo new 42" plasma TV in the salon. This is a proven money maker with an excellent 8 year charter following in the Bahamas and an average of \$850,000 annual gross income.

The boat was manufactured in 1991 but not delivered until 1994.

## **Исключения**

---

При продаже яхты исключаются личные вещи владельца.

## **Отказ от ответственности**

---

Компания предоставляет описание судна или яхты добросовестно, но не может гарантировать точность этой информации, а также не ручается за техническое состояние. Покупатель должен проинструктировать своих агентов или оценщиков исследовать представленную информацию более подробно, по собственному желанию. Продажа судна или яхты, изменение цены или снятие с продажи будет происходить без предварительного уведомления.

# ФОТОГРАФИИ

**Salon**



**Dining**



**King Master**



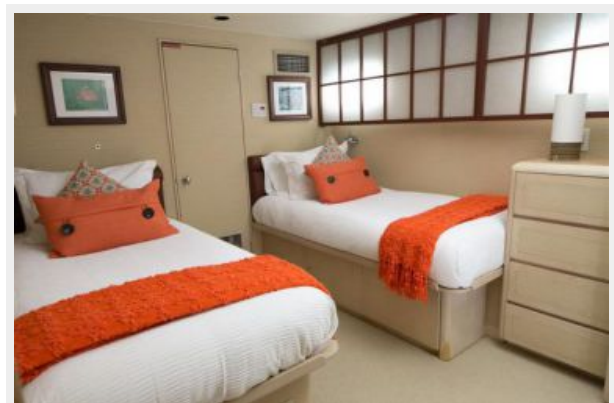
**Master Desk**



**Queen VIP**



**Twin with Pullman**



**Convertible Twin with Pullman**



**Aft Deck**



**Flybridge**



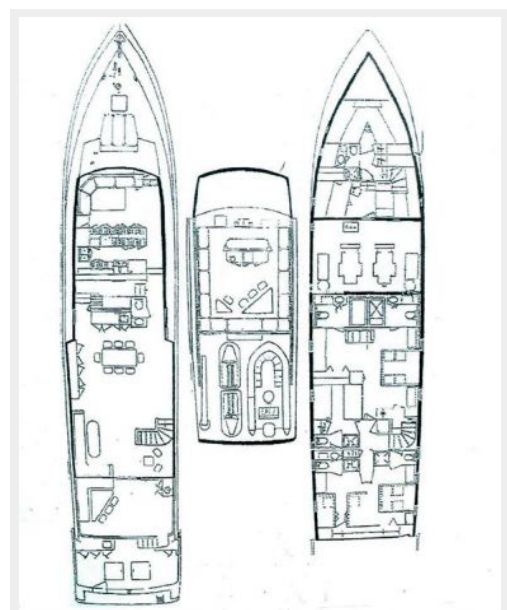
**Flybridge Aft**



**Flybridge Dining**



**Layout**





# КОНТАКТЫ

---

Андрей Шестаков (Andrey Shestakov) – ведущий яхтенный брокер отдела продаж яхт и судов компании Shestakov Yacht Sales Inc. Официальный представитель Shestakov Yacht Sales Inc. для русскоговорящих клиентов в центральном офисе компании в Майами/Форт Лодердейл/Флорида/США.

## Контактная информация

---

Email: [andrey@shestakovyachtsales.com](mailto:andrey@shestakovyachtsales.com)

Web: [shestakovyachtsales.com](http://shestakovyachtsales.com)

## Телефоны

---

Краснодарский край: **+7(918)465-66-44**

США, Майами, Флорида: **+1(954)274-4435**

## Время работы

---

Понедельник – Суббота: **9:00 - 21:00**  
EDT

Воскресенье: **Закрето**

## Адрес

---



Harbour Towne Marina, 850 NE 3rd St,  
STE 213, Dania, FL 33004