

MY WAY — BUDDY DAVIS



Builder: BUDDY DAVIS

Year Built: 1999

Model: Sport Fisherman

Price: PRICE ON APPLICATION

Location: United States

LOA: 68' 0" (20.73m)

Beam: 17' 6" (5.33m)

Max Draft: 5' 8" (1.73m)

Our experienced yacht broker, Andrey Shestakov, will help you choose and buy a yacht that best suits your needs **MY WAY — BUDDY DAVIS** from our catalogue. Presently, at Shestakov Yacht Sales Inc., we have a wide variety of yachts available on our sale's list. We also work in close contact with all the big yacht manufacturers from all over the world.

If you would like to buy a yacht **MY WAY — BUDDY DAVIS** or would like help answering any questions concerning purchasing, selling or chartering a yacht, please call **+1(954)274-4435**

TABLE OF CONTENTS

TABLE OF CONTENTS	2
SPECIFICATIONS	5
Basic Information	5
Dimensions	5
Speed, Capacities and Weight	5
Accommodations	5
Hull and Deck Information	5
Engine Information	5
DETAILED INFORMATION	6
Salon	6
Galley	6
Master Stateroom	6
Forward Stateroom	6
Forward Bunk Room	6
Guest Head	6
Crew Stateroom	6
Enclosed Flybridge	7
Electronics and Navigational Equipment	7
Cockpit	7
Deck Equipment	7
Engine Room and Mechanical	7
Exclusions	7
Disclaimer	7
PHOTOS	9
Salon	9
Salon	9
Salon	9
Salon	9

Dinette	9
Galley	9
Galley	10
Galley	10
Laundry	10
Master Stateroom	10
Master Stateroom	11
Master Stateroom	11
Master Head	11
Master Head	11
Forward Stateroom	12
Forward Stateroom	12
Forward Head	12
Forward Stateroom	12
Forward Head	13
Guest Stateroom	13
Guest Head	13
Crew Stateroom	13
Crew Head	14
Enclosed Flybridge	14
Enclosed Flybridge	14
Enclosed Flybridge	14
Enclosed Flybridge	14
Aft Deck	14
Enclosed Flybridge	15
Aft Deck	15
Aft Deck	15
Cockpit	15
Cockpit	15

Cockpit	15
Cockpit	16
Cockpit	16
Cockpit	16
Bow/Tender	16
Bow	17
Bow	17
Bow	17
Engine Room	17
Engine Room	17
Engine Room	17
Engine Room	18
Engine Room	18
Engine Room	18
Engine Room	18
Engine Room	18
Engine Room	18
CONTACTS	19
Contact details	19
Telephones	19
Office hours	19
Address	19

SPECIFICATIONS

Basic Information

Category: Sport Fisherman

Model Year: 2000

Year Built: 1999

Country: United States

Dimensions

LOA: 68' 0" (20.73m)

Beam: 17' 6" (5.33m)

Max Draft: 5' 8" (1.73m)

Speed, Capacities and Weight

Water Capacity: 250 Gallons

Fuel Capacity: 1850 Gallons

Accommodations

Total Cabins: 4

Hull and Deck Information

Hull Material: Fiberglass

Engine Information

Engines: 2

Manufacturer: Caterpillar

Model: 3412

Engine Type: Inboard

Fuel Type: Diesel

DETAILED INFORMATION

Salon

L Shape leather sofa with storage underneath, expandable cocktail table with Hi lo settings, bar stools for galley bar area, stainless steel spiral staircase to enclosed bridge, flat screen TV with home theater and SAT TV receivers, silhouette blinds, Cruise Air A/C, credenza with granite top and storage area, maple hard wood floor at entrance and dinette area, dinette with leather seating and maple wood top.

Galley

Granite counter tops, Sub Zero stainless steel under counter drawer refrigerator/freezer (3 units), maple hard wood flooring, ample pantry storage, (3) burner ceramic cook top, stainless steel sink, convection/microwave oven, dish washer, trash compactor.

Master Stateroom

Island queen berth with storage underneath, his and hers full size closet, LCD TV with DSS receiver, night tables with granite tops, private head with granite tile floor and granite counter tops, large shower, abundance of vanity storage.

Forward Stateroom

Queen island berth with storage, side credenzas with granite tops, overhead storage cabinets, hanging closet, en-suite head with large shower, granite vanity top, maple hard wood floors.

Forward Bunk Room

Upper and lower bunks, hanging closet, storage drawers, access to guest head.

Guest Head

Granite vanity tops, large shower, maple hard wood floors.

Crew Stateroom

Upper and lower bunks, storage drawers, engine room access door.

Enclosed Flybridge

Enclosed pilot house with maple wood accents, A/C, L-shape leather sofa, Recaro leather captain's chair, two companion leather bench seats, maple hard wood floors, granite helm top with burl wood dash board.

Electronics and Navigational Equipment

(2) Koden Radars, Ray Marine wind speed indicator, (2) SEA VHF, SEA hailer, Northstar 962 GPS, Northstar 952 GPS, Robertson autopilot, bow thruster, electronic controls for engines, night vision camera, Koden fish finder, search light, interphase forward looking sounder, dart depth and log.

Cockpit

Teak cockpit, teak covering boards and coaming, cockpit table with 4" pedestal, fish box, cockpit freezer, swim platform, cockpit shade, (2) 50 amp shore cords, transom fish box, outriggers.

Deck Equipment

Full bow rail, 13' Novurania w/ Yamaha F50, davit, windlass, bow pulpit, full bow rail, fender storage racks, spare anchor, radar mast on bridge.

Engine Room and Mechanical

Twin CAT 3412 engines 1350 hp, (2) Northern Lights 32 kw generators with 5000 hrs each, 1200 GPD water maker, Eskimo Ice machine, battery chargers, (6) air conditioner compressors, engine room cameras, intercom system with bridge, dripless shaft logs, Racor fuel filters.

Exclusions

Owner's personal belongings.

Disclaimer

The Company offers the details of this vessel or yacht in good faith but cannot guarantee or warrant the accuracy of this information nor warrant the condition of the vessel. A buyer should

instruct his representatives, agents, or his surveyors, to investigate such details as the buyer desires validated. This vessel or yacht is offered subject to prior sale, price change, or withdrawal without notice.

PHOTOS

Salon



Salon



Salon



Salon



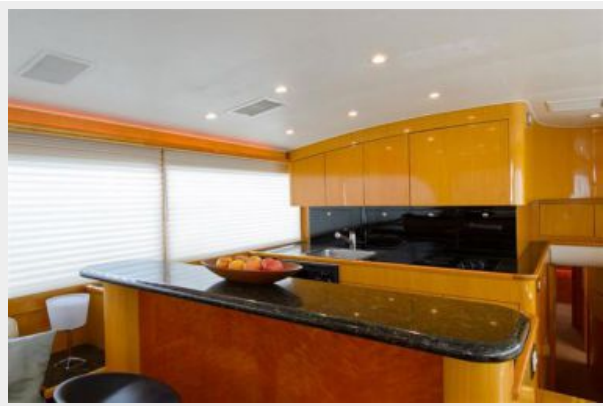
Dinette



Galley



Galley



Galley



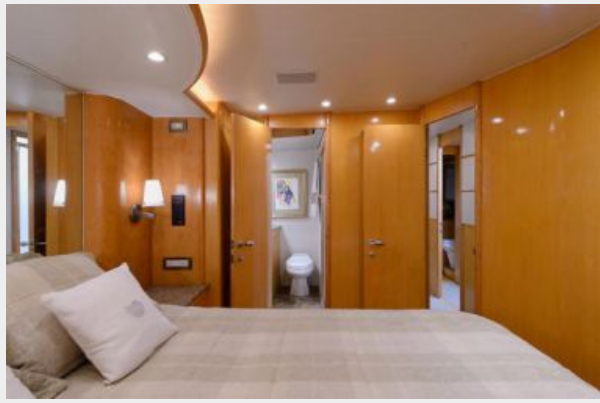
Laundry



Master Stateroom



Master Stateroom



Master Stateroom



Master Head



Master Head



Forward Stateroom



Forward Stateroom



Forward Stateroom



Forward Head



Forward Head



Guest Stateroom



Guest Head



Crew Stateroom



Crew Head



Enclosed Flybridge



Enclosed Flybridge



Enclosed Flybridge



Enclosed Flybridge



Aft Deck



Enclosed Flybridge



Aft Deck



Aft Deck



Cockpit



Cockpit



Cockpit



Cockpit



Cockpit



Cockpit



Bow/Tender



Bow



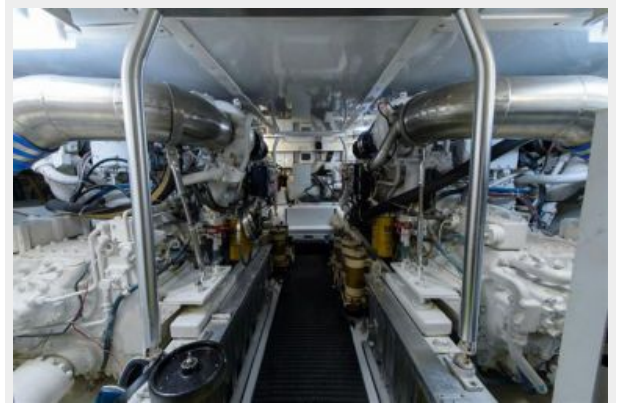
Bow



Bow



Engine Room



Engine Room



Engine Room



Engine Room



Engine Room



Engine Room



Engine Room



Engine Room



Engine Room



CONTACTS

Andrey Shestakov, leading yacht broker of the sales department of Shestakov Yacht Sales Inc. Shestakov Yacht Sales Inc., the official representative of the Miami/Fort Lauderdale FL headquarters.

Contact details

Email: andrey@shestakovyachtsales.com

Web: shestakovyachtsales.com/en/

Telephones

USA: +1(954)274-4435

Office hours

Monday – Saturday: **9:00 - 21:00** EDT

Sunday: **closed**

Address



Harbour Towne Marina, 850 NE 3rd St,
STE 213, Dania, FL 33004