

## HOT MIX — HARGRAVE



**Судостроитель:** HARGRAVE

**Год постройки:** 2001

**Модель:** Моторная яхта

**Цена:** **ЦЕНА ЯХТЫ ПО ЗАПРОСУ**

**Местонахождение:** United States

**Длина общая:** 89' 0" (27.13m)

**Ширина:** 20' 0" (6.10m)

**Макс. осадка:** 5' 6" (1.68m)

**Крейс. скорость:** 14 Kts. (16 MPH)

**Макс. скорость:** 20 Kts. (23 MPH)

Купить Hot Mix — HARGRAVE а также выбрать подходящую вам яхту из нашего каталога яхт вам поможет опытный яхтенный брокер Андрей Шестаков. На сегодняшний день компания Shestakov Yacht Sales Inc. имеет большое количество яхт в собственном списке продаж, а также тесно сотрудничает со всеми крупными яхтенными производителями по всему миру.

Для того чтобы купить яхту Hot Mix — HARGRAVE а также проконсультироваться по любому вопросу связанному с покупкой, продажей, чартером яхт позвоните по телефону **+7(918)465-66-44**.

# ОГЛАВЛЕНИЕ

---

ОГЛАВЛЕНИЕ	2
ХАРАКТЕРИСТИКИ	4
Обзор	4
Основная информация	4
Размеры	4
Скорость, вместимость и масса	4
Размещение	4
Корпус и палуба	4
Информация о двигателе	5
ПОДРОБНОЕ ОПИСАНИЕ	6
Fly Bridge & Boat Deck	6
Aft Deck & Cockpit	6
Galley	6
Interior	7
Electronics	7
Mechanical	8
Exterior	8
Hull	9
Electrical	9
Safety Gear	9
Machinery	10
Machinery Space	10
Crew Lounge	10
Fuel	10
Исключения	11
Отказ от ответственности	11
ФОТОГРАФИИ	12
КОНТАКТЫ	19

---

Контактная информация	19
Телефоны	19
Время работы	19
Адрес	19

---

# ХАРАКТЕРИСТИКИ

## Обзор

New to the Market! Hotmix has recently had all services and is ready to cruise. Upgrades (Oct 2014) from audio visual equipment to fresh bottom paint, as well as BRAND NEW AIR CONDITIONING (new chillers and returns), this vessel is ready to travel. Her 4 guest stateroom plus 1 crew layout is extremely accommodating for her guests. She could also be considered a 5 stateroom vessel for the owner operator. Fully stabilized with oversized fins and 2800 original hours on her Caterpillar power makes her by far the best deal on the market!!

## Основная информация

Тип судна: Моторная яхта

Модельный год: 2001

Год постройки: 2001

Страна: United States

## Размеры

Длина общая: 89' 0" (27.13m)

Ширина: 20' 0" (6.10m)

Макс. осадка: 5' 6" (1.68m)

## Скорость, вместимость и масса

Крейс. скорость: 14 Kts. (16 MPH)

Макс. скорость: 20 Kts. (23 MPH)

Вместимость воды: 604 Gallons

Объем топливного бака: 2905 Gallons

## Размещение

Всего кают: 5

Всего ком. состава: 6

## Корпус и палуба

Материал корпуса: Fiberglass

## Информация о двигателе

---

**Двигатели:** 2

**Производитель:** Caterpillar

**Модель:** 3412E

**Тип двигателя:** Inboard

**Тип топлива:** Diesel

---

# ПОДРОБНОЕ ОПИСАНИЕ

---

## Fly Bridge & Boat Deck

---

The flybridge is accessed from either the aft deck or from the interior up a stairway to starboard that is opposite the galley.

The helm is forward on the centerline with all engine controls, gauges and electronics all easy to hand. There are twin helm chairs forward, a large L shaped seating area aft to port with a coffee table and two chairs opposite to starboard with a console separating the helm from the guest area on the centerline in which the TV is installed.

Aft on the fly bridge is the boat deck that comes with a built in console forward to starboard in which the sink and ice maker are installed. Opposite to port is a built in console with a chest freezer. Aft on the centerline is where the tender is stowed and the davit is aft to port. Opposite to starboard is the stairway leading down to the aft deck.

## Aft Deck & Cockpit

---

This is a good size and comes with a large table, built in seating forward to port and the table aft of this. there is built in cabinetry aft on the aft deck in which the icemaker and refrigerator is installed, port and starboard transom gates and to starboard is the stairway to the flybridge.

All of the aft deck is well protected by the hard top. There are steps to port and starboard that lead down to the cockpit and swim platform. In the cockpit there is a large watertight door for access to the lazarette and engine room on the centerline.

Gas Grill located on the stern of the aft deck.

The lazarette has a fish box located in the center of the vessel. Storage and access on both outboard sides of the swim platform.

## Galley

---

- GE oven
- GE (4) Burner stove
- Jenn Air propane BBQ on aft deck
- GE microwave
- Convection oven on main deck
- GE side by side refrigerator and freezer
- U-line wine chiller in salon
- Ice maker in door dispenser in galley freezer

- Central vacuum system
- 30 gallon electric "Torrid" and 40 gallon "Atlantic" hot water heater
- 1000 GPD, watermakers Inc.
- Maytag combo
- GE dishwasher
- GE compactor
- Corian galley countertops
- Showers (5 plus a deck shower)
- Whirlpool tub in master stateroom

## Interior

---

The interior comes with a large salon that has an L shaped seating area aft to port and a coffee table in front. Opposite are two loose chairs with a side table. Forward in this space is the large round dining table with seating for six and opposite is the TV installed on powered lift in the overhead. There is built in storage cabinets forward of the dining area with the doorway to the galley to starboard.

The galley is forward to port with all equipment in good working condition. Opposite is the stairway up to the sky lounge and forward is the country kitchen style dining area with built in seating. There are port and starboard watertight doors for access to the side decks in the same area with the switchboards to starboard and the stairway down to the cabins forward to starboard with the day-head just aft of this.

All three guest cabins are aft and accessed from the aft stairway in the dining area. The master stateroom is aft and comes with a king sized berth, very good storage in drawers and hanging lockers. There is a small seating area to starboard and built in drawers to port. Aft are his/hers bathrooms accessed from port and starboard with a common whirlpool tub on the centerline.

Forward to starboard in the guest area is the twin cabin which consists of two side by side single beds, with good storage in drawers and lockers and the head and separate stall shower is accessed aft.

To port the cabin consists of a queen sized bed installed outboard again with good storage and the head separate stall shower accessed aft.

- Light cherry interior finish
- Carpets through out over teak and holly
- Light cherry trim
- Vinyl overhead
- Dinette is port forward in salon and country kitchen and aft deck

## Electronics

---

- 8" Danforth Compass
- Simrad autopilot AP20
- Simrad Anritsu 96 mile radar
- Garmin GPSMAP5012
- Furuno GP-36
- Garmin GPSMAP5012 chart plotter
- Funruno monitor chart plotter
- (2) Standard horizon AIS VHF
- Icom IC M59 in Galley VHF
- KVH Tracephone
- Panasonic Hybrid
- Furuno FCV-292 fishfinder
- Fununo FCV-292 Datamarine DM600 depth finder
- Fununo FCV-292 Sonar
- Datamarine DM600 and GPS
- Datamarine DM600 SW temp gauge
- Dell with Nobeltec software
- Samsung TV on powered lift and Panasonic blueray in salon
- Sony TV with Sony VCR in skylounge, port and starboard guest cabins
- Large TV in country kitchen dinette
- Sharp TV in Master Stateroom
- KVH Tracvision
- Sony surround sound receiver with Bose lifestyle system in salon
- Sirius sportster satellite radio in skylounge
- Pioneer CD/tuners in all guest and crew cabins
- Elbex CCTV system, one camera on aft deck and one in engine room

## Mechanical

---

- Oversized Naiad Stabilizers
- Bow Thruster
- Twin Generators w/ 3600 hrs.
- Water maker

## Exterior

---

- Fish well, Bait tank
- Gun-whale rod holders
- Service air compressor
- Glendinning Aft deck engine controls with remote on boat deck
- Windshield wipers
- Windshield washers



- Built in chest flybridge freezer
- U-line aft deck refrigerator
- U-line aft deck ice maker
- Manitowoc flybridge ice maker
- Hard top flybridge overhang
- Air conditioned enclosed flybridge
- Ground tackle anchors (2) stainless steel 1 Bruce, 1 Plow with a 350' chain each
- Ground tackle anchor, spare fortress FX-37
- Twin vertical electric anchor windlass, Maxwell 3500
- Deck wenchers - maxwell 2200 Capstan in cockpit
- Dinghy davit- Quicklift aluminum with full powered functions
- Aluminum marquipt gangway stairs
- Novurania dinghy HIN PKD13156K001
- 50hp Yamaha outboard motor

---

## Hull

---

- Molded fiberglass, off white
- Molded fiberglass, black anti-fouling with black boot stripe
- Molded fiberglass, off white
- Molded fiberglass with none skid areas, teak aft
- Stainless steel around the boat deck
- Raised fiberglass gun-whales
- Twin stainless steel anchor rollers
- Deck hardware is Stainless steel
- Integral fiberglass with aluminum ladder
- Transom gate

---

## Electrical

---

- (1) 50 amp 125/250V Shore Receptacles
- (2) 100 amp forward and aft with aft on power reel - 250V shore receptacles

---

## Safety Gear

---

- One life ring with no floating throw line
- 10 MAN "EV" life raft
- (2) ACR electric remote operated searchlights
- (2) aft facing spot lights in aft deck hard top - docking lights

---

## Machinery

---

- Engine location: Midships, below salon sole
- Two diesel Caterpillar
- Port & Starboard Model 3214E
- Exhaust muffler: Underwater outlets with by-pass's
- Electronic synchronized
- Single lever Glendining
- Five blade bronze propellers 41" x 39"
- Rudder: Stainless steel spades, 32 1/4" x 21 1/2" - New Rudder bearings Oct 2014
- Naiad bow thruster - 7 blade propeller in 12" tube
- Oversized Naiad stabilizer with 29 1/2" x 43 Fins
- Transmission - ZF
- AUX Generator 32kw - Northern lights 3679 hours, Northern lights 3692 hours
- Location of generators port aft in engine room

---

## Machinery Space

---

This area is accessed from the cockpit via the lazarette and comes with full standing headroom allowing easy access to all of the machinery to carry out all service work.

---

## Crew Lounge

---

This area is accessed from down the curved stairway leading from the galley dinette. The crew area consists of two cabins that both come with upper and lower bunks installed outboard, good storage in lockers and drawers and the port cabin has an attached bathroom accessed aft, whilst the starboard cabin bathroom is accessed from the crew corridor. The corridor has a good storage cupboard and aft is the washer and dryer.

---

## Fuel

---

FUEL BURN:

\_\_\_\_\_

2904 gallon fuel tank lay out is below

10 knots - 16 gallons per hour

14 knots - 60 gallons per hour

485 gallons each, port and starboard in engine room

658 gallons, centerline below guest cabin sole

397 gallons, below crew companionway sole

878 gallons, below master stateroom sole

---

## **Исключения**

При продаже яхты исключаются личные вещи владельца.

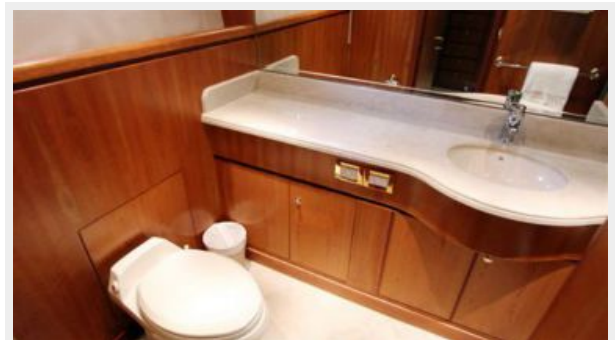
---

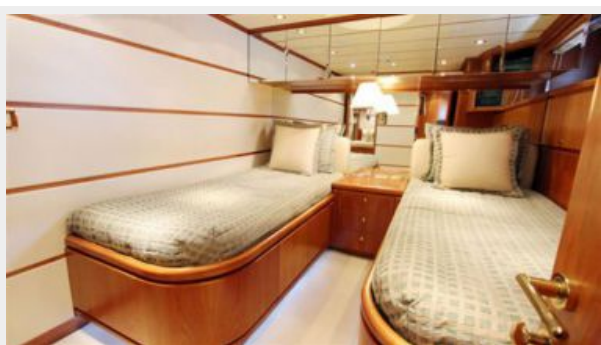
## **Отказ от ответственности**

Компания предоставляет описание судна или яхты добросовестно, но не может гарантировать точность этой информации, а также не ручается за техническое состояние. Покупатель должен проинструктировать своих агентов или оценщиков исследовать представленную информацию более подробно, по собственному желанию. Продажа судна или яхты, изменение цены или снятие с продажи будет происходить без предварительного уведомления.

# ФОТОГРАФИИ

















# КОНТАКТЫ

---

Андрей Шестаков (Andrey Shestakov) – ведущий яхтенный брокер отдела продаж яхт и судов компании Shestakov Yacht Sales Inc. Официальный представитель Shestakov Yacht Sales Inc. для русскоговорящих клиентов в центральном офисе компании в Майами/Форт Лодердейл/Флорида/США.

## Контактная информация

---

Email: [andrey@shestakovyachtsales.com](mailto:andrey@shestakovyachtsales.com)

Web: [shestakovyachtsales.com](http://shestakovyachtsales.com)

## Телефоны

---

Краснодарский край: **+7(918)465-66-44**

США, Майами, Флорида: **+1(954)274-4435**

## Время работы

---

Понедельник – Суббота: **9:00 - 21:00**  
EDT

Воскресенье: **Закрето**

## Адрес

---



Harbour Towne Marina, 850 NE 3rd St,  
STE 213, Dania, FL 33004