

BLANK CHECK — JARRETT BAY



Builder: JARRETT BAY

Year Built: 2013

Model: Sport Fisherman

Price: PRICE ON APPLICATION

Location: United States

LOA: 77' 0" (23.47m)

Beam: 21' 6" (6.55m)

Max Draft: 5' 8" (1.73m)

Our experienced yacht broker, Andrey Shestakov, will help you choose and buy a yacht that best suits your needs **Blank Check — JARRETT BAY** from our catalogue. Presently, at Shestakov Yacht Sales Inc., we have a wide variety of yachts available on our sale's list. We also work in close contact with all the big yacht manufacturers from all over the world.

If you would like to buy a yacht **Blank Check — JARRETT BAY** or would like help answering any questions concerning purchasing, selling or chartering a yacht, please call **+1(954)274-4435**

TABLE OF CONTENTS

TABLE OF CONTENTS	2
SPECIFICATIONS	4
Overview	4
Basic Information	4
Dimensions	4
Speed, Capacities and Weight	4
Accommodations	5
Hull and Deck Information	5
Engine Information	5
DETAILED INFORMATION	6
Layout Overview	6
Salon	6
Galley	7
Companionway	8
Master Stateroom	8
Port Guest Stateroom	9
Guest Stateroom (Starboard)	10
Guest Stateroom (Bow)	10
Master & Guest Heads	11
Cockpit	11
Fly Bridge	12
Exterior Finish/Construction	13
Hardware & Miscellaneous	14
Electrical Systems	15
Engine Compartment & Bilge	15
Electronics	16
Crew Quarters	16
Bausch American Tower Details	17

Exclusions	17
Disclaimer	17
PHOTOS	19
CONTACTS	29
Contact details	29
Telephones	29
Office hours	29
Address	29

SPECIFICATIONS

Overview

See this boat at **C-Dock Slip 310 A at the Ft. Lauderdale Boat Show**. The "Blank Check" is a custom built Jarrett Bay Boatworks vessel rich in heritage and amenities. She is professionally maintained in Palm Beach condition and is a **PROVEN TOURNAMENT WINNER!** "Blank Check" is built with MTU 16V-2000's @ 2600 hp and at 2000 RPM cruises at 35 knots and consumes 183 GPH. She has many amenities, to include a full tower by Bausch American, teak transom, teak aft bulkhead, coaming and covering boards, as well as teak decks and toe rail. MTU warranties through 5-22-15, an additional extended warranty may be purchased.

She features a figured high gloss cherry veneer throughout and provides five staterooms, each with their own head along with a day head conveniently located on the main salon level.

Basic Information

Category: Sport Fisherman

Sub Category: Convertible

Model Year: 2013

Year Built: 2013

Country: United States

Dimensions

LOA: 77' 0" (23.47m)

Beam: 21' 6" (6.55m)

Max Draft: 5' 8" (1.73m)

Speed, Capacities and Weight

Displacement: 139260 Pounds

Water Capacity: 350 Gallons

Holding Tank: 200 Gallons

Fuel Capacity: 3200 Gallons

Accommodations

Total Cabins: 4

Hull and Deck Information

Hull Material: Composite

Engine Information

Engines: 2

Manufacturer: MTU

Model: 16V2000

Engine Type: Inboard

Fuel Type: Diesel

DETAILED INFORMATION

Layout Overview

From her cold-molded fir and Okume bones to fiberglass skin coated in glossy Alexseal Cloud White, the 77' Jarrett Bay "Blank Check" stays true to its custom Carolina heritage, yet represents the next evolution in sportfish performance and functionality. Thanks to prop tunnels, the shaft angle is lower, yielding increased speed and efficiency - and a noteworthy draft of less than six feet. The high-speed stainless rudders and struts and a bottom with no through-hull protrusions or fairings result in an incredibly fast and sleek running surface.

The Blank Check's interior mirrors her sleek exterior with high-gloss cherry veneers throughout its five stateroom, six head layout. Flawless joinery covers her TriCel composite keeping the weight to speed ratio at top performance levels without sacrificing durability in the roughest seas. The sweeping mezzanine overhang gives way to a massive 255-sq. ft. cockpit, complete with two pressurized live-wells with capacities up to 125 gallons.

She is powered by Twin 16V-2000 MTUs rated at 2,600hp. Carrying 3,200 gallons of fuel, she tops out at a speed of 41 kts and cruising speed of 35 kts. With nearly 60 custom builds to date, Jarrett Bay designs their hulls, first and foremost, with performance in mind. Jarrett Bay's proven modified-vee hull design uses steadfastly seaworthy, lightweight materials allowing the Blank Check to be faster than other similarly sized boats with equal or more horsepower, and significantly superior fuel economy than custom and production boats in her class.

Salon

As you enter this massive salon through the electric sliding door, you'll find that nothing is left to wish for, nor storage unturned. The interior showcases a high gloss ropey cherry wood with raised panel accenting. You'll find an abundance of seating within the salon and galley. To port is an I-shaped lounge, and to starboard a straight lounge, both with hinged storage for ease of access. On either ends of those large sofas you'll find end tables with storage. Center and an eye catcher is the coffee table made from a cactus with a black granite top.

- Carpeting
- High Gloss Cherry and Maple flooring, salon entry
- Sound barrier carpet padding
- Whisperwall headliner
- Accent rope lighting throughout interior
- Ropey Cherry veneer/lumber bulkheads, cabinetry and trim with a high gloss finish, cabinet fronts have decorative edging.
- Cherry valances
- Light Sconces
- Fixed frameless windows with tempered glass

- Dove Tailed, wood drawers
- Cabinets are built of tri-cell honeycomb
- Overhead light fixtures
- Dimmable lights
- Duplex outlets
- Overhead speakers
- Entertainment center to include 46" Samsung Ultra Slip LED
- L-lounge with hinged storage, port side
- End tables with storage on either end of the l-lounge
- Straight lounge with hinged storage, starboard side
- Air conditioning dispersed over valances, port and starboard
- Smoke detector
- Custom coffee table made from a cactus with a stone top
- Ice Maker
- Electric Sliding Door
- Rope lighting behind valances/overhead
- Rope lighting under berth base/cabinets
- Telephone Outlet

Galley

The galley features a center walk around island cabinet that houses three drawer style refrigeration units and a quartz top. Aft of the island, you will find three bar stools, and to starboard, a U-shaped dinette with storage nicely hidden in the dinette pedestal. The TV is positioned on the bulkhead forward of the dinette providing good visibility for all areas.

- High gloss cherry/maple flooring
- Whisperwall headliner
- Fixed frameless windows with tempered glass
- Quartz counter tops, under-mount stainless galley sink and storage cabinets made of ropey cherry and raised decorative panels
- Veneer/lumber to match interior finish
- Sub Zero AC under-counter (4) refrigerator and (2) freezer drawer units
- AC four-burner ceramic cooktop on countertop
- Microwave/convection oven covered by cabinet door
- Overhead light fixtures
- Dimmable lights
- AC duplex outlet
- Curved center walk around bar with three stools and Quartz top
- Air conditioning dispersed over valances, port and starboard
- Ropey Cherry veneer inserts to match interior finish on appliance fascia
- U-shaped dinette with storage underneath and black granite table
- Curved Cabinet down port side galley

- Garbage disposal
- Ice maker

Companionway

"Blank Check" built an alcove in the stairwell leading to the deck below, that allows you to place a decorative accent of your choice. The stairway leading down below is built of high gloss cherry and maple and features wainscoating accent panels through the lower half of the bulkheads in both the stairwell and the companionway leading to the bow stateroom. Just off the galley and forward of the dinette, you'll find access to a day head to starboard and to port, a large walk in storage area, which houses electrical panels, as well as a full size washer/dryer, wine chiller, additional refrigeration and galley storage.

- Lower Decks - carpet
- Whisperwall headliner
- Whisperwall wallcovering
- Ropey Cherry panels and wainscoating in lower half of stairwell and companionway
- Overhead light fixtures
- Raised panel cherry veneer doors to match interior

- High gloss cherry steps with hull liner storage inside

- Access hatches to bilge storage
- Port side storage room houses, full size washer/dryer, wine chiller, additional refrigeration and electrical panels.
- Access to day head and storage area
- Access to staterooms
- Access to Crews Quarters

Master Stateroom

Just off the port companionway you will find the master stateroom, which showcases a queen walk around berth with high gloss cherry berth keeper, storage under the berth accessed via hinged gas cylinders, nightstands on either side with storage, cabinets along the outboard hullside and a hanging locker.

- Carpeting
- Whisperwall headliner
- Whisperwall wallcovering
- Whisperwall bulkheads with high gloss cherry wainscoating on the lower half
- Whisperwall on hull side
- High gloss ropery cherry with raised panel accents on door to stateroom, with doorstop
- Berth with hull lined storage, accessible via lift top

- High Gloss Cherry veneer berth base
- High Gloss Cherry sea rail
- Inner spring mattress, spread, pillows, pillow shams
- Hanging locker with cedar, drawer storage, door and automatic light
- Twin nightstands with drawers
- Overhead light fixtures
- Dimmable lights
- AC duplex outlet
- 32" Samsung LED TV
- Pioneer ELITE Receiver model
- Subwoofer
- Overhead Speakers
- Hatch to below deck storage area
- Private access to head with door stop
- Air conditioning dispersed through valance
- Smoke detector
- SMX HVAC compartment controlled
- Overhead soffit
- Upper cabinets above nightstands

Port Guest Stateroom

"Blank Check" features a over/under berth just forward of the master stateroom, which is rich in features with the high gloss ropey cherry wood and storage.

- Carpeting
- Whisperwall headliner
- Whisperwall wallcovering
- Whisperwall bulkheads
- Over/under berth with hull lined storage under
- High Gloss Cherry veneer berth base
- High Gloss Cherry sea rail
- Inner spring mattress, spread, pillows, pillow shams
- Hanging locker with cedar, door and automatic light
- Overhead light fixtures
- Dimmable lights
- AC duplex outlet
- Private access to head with door stop
- Smoke detector
- SMX HVAC compartment controlled
- Overhead speakers
- Access to private head
- 22: LG LED TV

- Niles Stereo Amplifier

Guest Stateroom (Starboard)

"Blank Check" features twin berths to starboard, just off the companionway with its own private head. In addition, this stateroom features a folding berth that disappears into the hullside as well as lots of storage.

- Carpeting
- Whisperwall headliner
- Whisperwall wallcovering
- Whisperwall hullsiding
- Side by side berths with storage under
- High Gloss Cherry veneer berth base
- High Gloss Cherry sea rail
- Inner spring mattress, spread, pillows, pillow shams
- Hanging locker with cedar, door and automatic light
- Overhead hatch
- Storage cabinet above berths with decorative alcove
- Overhead speakers
- Nightstand with storage
- Overhead light fixtures
- Dimmable lights
- AC duplex outlet
- Smoke detector
- SMX HVAC compartment controlled
- LG 22" LED TV
- Niles Stereo

Guest Stateroom (Bow)

"Blank Check" features a walk around queen berth in the bow stateroom with private access to its own head. This stateroom is rich with rosey cherry veneer and storage on the upper hullsides as well as under the berth.

- Carpeting
- Whisperwall headliner
- Whisperwall wallcovering
- Whisperwall hullsiding
- Queen tapered berth with storage underneath accessed via air assisted cylinders
- High Gloss Cherry veneer berth base
- High Gloss Cherry sea rail
- Inner spring mattress, spread, pillows, pillow shams

- Hanging lockers with cedar, door and automatic light
- Overhead hatch
- Niles Stereo amplifier
- Nightstands, port and starboard
- Overhead storage cabinets on either side of the berth
- Overhead speakers
- Overhead light fixtures
- Dimmable lights
- AC duplex outlet
- Hatch to below deck storage
- Smoke detector
- SMX HVAC compartment controlled
- Private access to head
- 26" LG LED black flat panel LCD HDTV

Master & Guest Heads

Each head is beautifully designed and features the right high gloss ropey cherry cabinetry, black granite countertops, glass tile floors, and glass shower doors.

- Glass tile floors
- Gloss finish headliner
- Wall covering
- Linen storage
- Black granite countertops and integral sink over storage cabinet made of cherry ropey veneer to match interior finish
- Stall shower, with glass door, plumbed to Headhunter system
- Storage cabinet with mirror above sink
- Towel bar
- Headhunter freshwater toilet
- Head exhaust fans ducted to outside air box
- Overhead light fixtures
- AC duplex outlet
- Air conditioning discharge through valance

Cockpit

The "Blank Check's" cockpit has nothing left to desire. She has a teak aft bulkhead and electric salon door, teak faced mezzanine with storage inboard, and to starboard a teak faced storage cabinet with drawers. On the lower mezzanine you will find access to hinged storage spaces, engine room and all of this is covered with teak decks. The cockpit coaming and covering

boards are also teak. "Blank Check" showcases a teak transom. Additional amenities include:

- Seating with sunbrella cushions across upper mezzanine
- Scuppers in cockpit
- Transom door
- Two 100-amp shore line electrical inlets, behind doors, with 50' cords (white)
- Seawater and freshwater wash down outlets, behind doors
- Shore water connection for water tank fill, behind doors
- Lower starboard mezzanine ice box
- Transom fish box, lids are cored out and insulated
- Hatch to engine compartment
- Storage in steps to deckhouse
- Sliding door to deckhouse, electric
- Lower port mezzanine, bait box and storage box
- Overhead lights under flybridge overhang
- Aluminum mounting plate laminated in deck for fighting chair
- Polished stainless-steel rod holders, flush mount, set of 6
- Teak Transom
- Teak coaming boards
- Teak Covering boards
- Teak cockpit and mezzanine
- Teak aft bulkhead and door and side wings
- Air Conditioning Blowers
- (2) Chipped Ice Machine, Eskimo 540, with two dumps
- Recirculating Livewell - transom Fishbox
- Gaff tube (4) with door
- Mezzanine tackle cabinet with insulated storage and two cup holders, inboard of mezzanine
- Release Marine Fighting chair with rigging station and storage drawer
- Stainless lined freezer
- Stainless lined bait box and drink box with individual temperature controls
- (2) In-deck fish boxes
- Teak tackle storage cabinet
- Full cockpit cover
- Partial cockpit shade cover
- Speakers Craft Accufit

Fly Bridge

"Blank Check's" helm console is a pensunila style with twin helm chairs and a full array of electronics. Forward is a large L-shaped seating provides for storage underneath, and to starboard and additional straight lounge. You'll find good storage forward of the bridge, as well as in the coffee table center of the I-shaped lounge. Additional stainless steel freezers are

located just forward of the helm. The Bausch-American tower is custom designed for rod storage in her overhead, recessed teasers and electronics box.

- Bilge, high water alarm
- Top-loading insulated drink box
- L-shaped bench seating with cushions, and storage underneath
- Bench seat, starboard, with cushions, and storage underneath
- Storage space under bench seats
- Additional storage areas beneath seats, console, coffee table and forward brow
- Neutral interlock switches allowing engine to start in neutral only
- Alexseal topcoat paint with polymeric beads, non-skid
- Engine synchronization control, with engine package
- Compass
- Teak pod console with wheel and single-lever engine controls
- Hydraulic power-assisted steering
- Marine Waterproof Speakers
- 24-volt DC distribution panel
- Twin Release Marine adjustable teak helm chairs with stainless steel hardware, footrest and backing plate, with pads to level off chair with crown of deck
- Air conditioning blowers
- Washdown, Freshwater, Bridge
- Molded cup holders
- Stainless steel freezer forward of Helm
- Coffee table with hinged top for storage
- recessed rod storage in hardtop
- Recessed teasers in hardtop
- Bausch-American Tower
- Outriggers
- Full array of electronics (see Electronics list)

Exterior Finish/Construction

"Blank Check" features an Alexseal painted hull, aft teak bulkhead and door, Bausch-American Tower, teak toe rail, teak transom and many custom features. A door was built within the mask to provide additional long range storage in the brow.

- Epoxy Resin Cold molded construction throughout
- Hull and superstructure linear Alexseal topcoat, white
- Polymer/copper-based anti-fouling bottom paint
- Forward Decks, non-skid surface, Alexseal topcoat paint
- Hull Sides: Cold molded construction consisting of three layers of 1/4" Okume plywood on diagonals over fir ribbands and glassed inside and out with one layer of 1708 bi-axial cloth with Epoxy resin.

- Hull Bottom: Cold molded construction consisting of three layers of 1/2" marine fir plywood on diagonals over fir stringers and glassed inside and out with one layer of 3408 tri-axial cloth with epoxy resin
- Laminated douglas fir full length main engine stringers and keel
- Aluminum engine bed caps
- Louvered side air intakes
- Reinforced chine spray rails
- Teak toe rail and cabin molding
- Mask around cabin front with customized entry to storage space

Hardware & Miscellaneous

- All Interior cabinet hardware polished chrome
- Anchor locker bow deck, with anchor storage
- Hatch in the brow of the cabin, equipped with freshwater wash down station and storage for the bow
- Two polished stainless-steel stern cleats, drilled and tapped into aluminum
- Four polished stainless-steel spring line cleats, drilled and tapped into aluminum
- Polished stainless-steel bow cleats, drilled and tapped into aluminum
- Stainless steel corner hawse pipes
- Molded grab rails on cabin side
- Custom shaped flybridge ladder with teak steps
- Zincs on shafts
- Water tank fill thru quick disconnect in cockpit
- Stainless-steel trim tabs
- Nibral, high speed struts with orcott bearings
- Stainless-steel high speed rudders
- 4 blade propellers, Nibral high performance
- Alloy 22 propeller 3 1/2" shafts, with zincs
- Fiberglass shaft tubes with orcott bearing
- Dripless rudder seals
- Bow deck access to rope storage locker
- Fluorescent Lights
- Water shut off valves for sinks and showers
- Deck plates for fuel (engine room access) and waste pump out (bow deck)
- Heavy-duty engine couplings
- Generator exhaust with aqualift muffler
- Stainless steel 1" metal bumper
- Dripless shaft seals with spare seals
- Stainless removable anchor chute
- Hydraulic bow thruster system

Electrical Systems

- Two 24-volt banks of heavy-duty, 12-volt marine AGM batteries for main engines
- One 24-volt bank of heavy-duty, 12-volt marine AGM batteries for house
- AGM compatible 240-volt two bank battery charger for main engine batteries
- AGM compatible 240-volt battery charger with power supply capabilities for house batteries
- Battery paralleling system with switch at control console
- Air conditioning with reverse cycle heating, with AC compressors, individually controlled by SMX controls
- Two 240-volt, 100-amp, shore cord with overcurrent protection
- Dimmable lights in living quarters
- Duplex outlets with ground fault protection, living quarters
- Battery control with fuses and isolation switches
- DC distribution panel with magnetic circuit breakers (pump room)
- DC electronics panel with magnetic circuit breakers (bridge)
- AC distribution panel with magnetic circuit breakers
- AC switching panel with source selector switches, volt meter, ammeter, generator start/stop controls, interlock selector breakers
- Ventilation fan system for anchor locker
- Ground fault protection on AC receptacles
- Head exhaust fans ducted to outside air box
- Twin Generator, 28KW
- (2) ISO Boost Transformer
- Demister Fans
- LED underwater lights

Engine Compartment & Bilge

- Livos air intake filter system
- Water shut-off valves for sinks and showers
- Fluorescent lights
- Twin MTU 16V2000 @ 2600 hp diesel, freshwater-cooled main engines with electrically controlled marine gears, neutral interlocks, exhaust silencers, engine hour meters, alternators, fuel filters and seawater strainers
- Twin 28 kW freshwater-cooled generator with shock mounts, seawater strainer, remote start, fuel/water separator, hour meter, aqua-lift muffler and sound enclosure.
- Polyethylene water lines
- Fixed fire extinguishing automatic system for engine compartment and pump room
- Pressurized 230-volt AC Headhunter, freshwater pump with freshwater filter
- Two 230-volt AC 18-gallon electric water heater
- Freshwater fill hose for engines and generator
- 24-volt DC bilge pumps, eight at 2000 gph, with heavy-duty float switches
- Bronze ball valves on all underwater through-hull fittings with electrical bonding throughout

Integral epoxy and glass water tank

- Aluminum fuel tanks with sight gauges
- Integral epoxy and glass sewage holding tank with 230-volt AC sewage pump for overboard discharge with lockable valve engines
- United States Coast Guard type A1 U.L. Marine-listed fuel lines
- Seawater pressure system with AC pump and accumulator tank
- Air conditioning compressors and pump - chilled water system
- Triple Racor fuel filters, main engines
- Alexseal painted and faired engine room, pump room and bilges
- Headhunter Grey Water System
- Sewage holding tank plumbed for dockside pump-out
- Rudder shelf with rudder upper bearings and steering ram mounts
- Stainless-steel steering tie bar with pivoting self-aligning adjustable ball joint connection at all cylinder and tie bar connections
- Heavy duty tiller arms
- Intake sea chests with flush screens and angled intake holes
- (2) Water makers, 1400 GPD, FCI - with pre-filter oil/water separator, uv filter and fresh water rinse
- Water softener system
- Air conditioner in pump room and engine room
- Underwater exhaust system

Electronics

- Furuno 3D NavNet System
- Furuno Radar
- Sounder
- Furuno Satellite Weather System
- Garmin AIS 600
- Furuno Digital Depth/Temp System
- Simrad AP2803 Inboard Autopilot System
- Garmin Navigation System
- Garmin Chirp Echosounder
- Icom VHF
- Flir Night Vision System
- Satellite TV
- Cameras

Crew Quarters

Turning aft down the companionway and across the full beam of the vessel, you will find the crew quarters which features an over/under berth, access to the engine room, and a full head.

- Carpeting
- Whisperwall Headliner
- Whisperwall wallcovering
- Over/Under berth with storage under lower berth and upper berth
- Mattress, spread, pillows and pillow shams
- Hanging locker
- Overhead lighting
- AC Duplex outlet
- Private access to head
- Smoke Detector
- SMX HVAC compartment controlled
- Second access to engine compartment

Bausch American Tower Details

"Blank Check" is equipped with a full tuna tower, wire teaser reels, and double rod locker storage molded in hardtop.

- Tna tower with 12' gap, polish pipe
- Molded standing platform with pod 60:-72"
- Belly band with arm lip
- C/I tower jump seat
- Fold down radio box, electric with radar pod
- Teaser pocket with sliding doors
- Spreader light 4 in 1 molded aft
- Spreader light 2 in 1 molded forward
- Spreader light 2 in 1 molded, port and starboard
- Rod holders with 3" oval gusset (9) bridge rail, 4 in each leg
- Rupp quad spreader
- Bigg Rigg heavy back bars
- Rupp center rigger with mount
- Freshwater washdown in tower
- Double rod storage molded into hardtop
- Edson black tower helm wheel

Exclusions

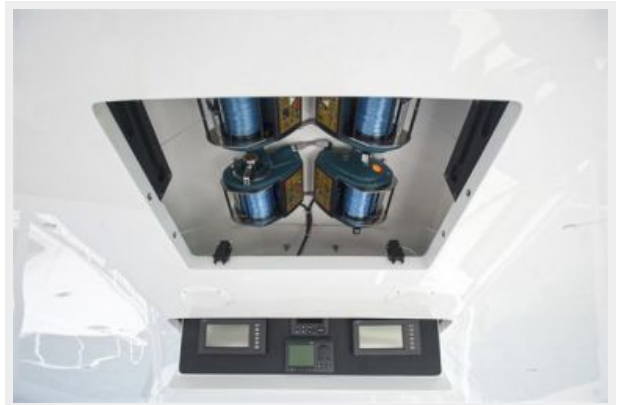
Owner's personal belongings.

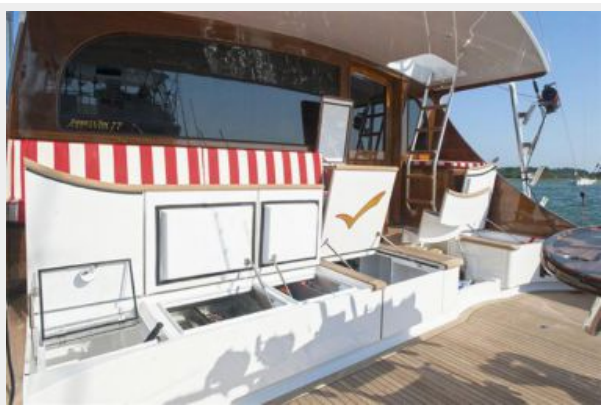
Disclaimer

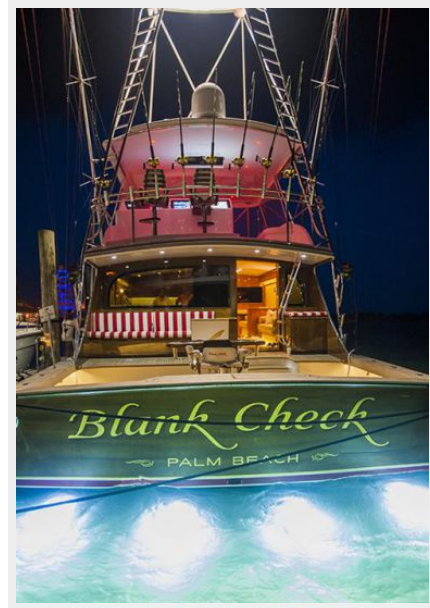
The Company offers the details of this vessel or yacht in good faith but cannot guarantee or

warrant the accuracy of this information nor warrant the condition of the vessel. A buyer should instruct his representatives, agents, or his surveyors, to investigate such details as the buyer desires validated. This vessel or yacht is offered subject to prior sale, price change, or withdrawal without notice.

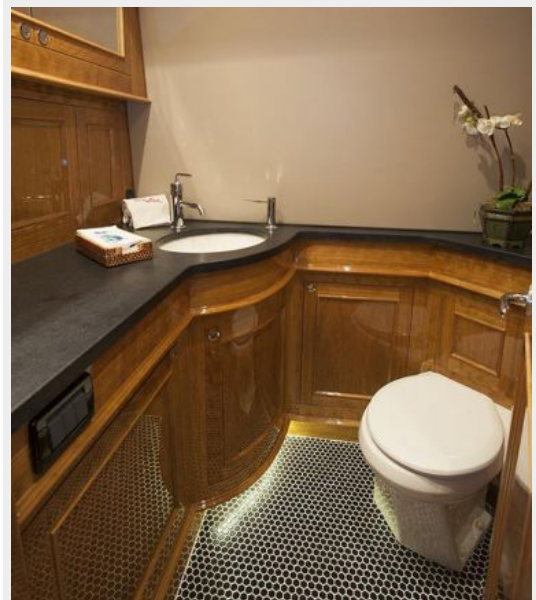
PHOTOS







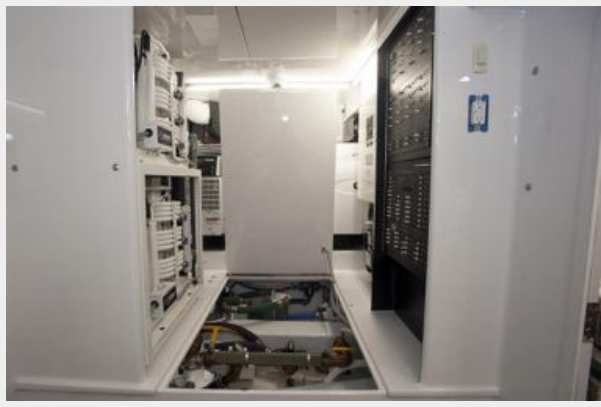














CONTACTS

Andrey Shestakov, leading yacht broker of the sales department of Shestakov Yacht Sales Inc. Shestakov Yacht Sales Inc., the official representative of the Miami/Fort Lauderdale FL headquarters.

Contact details

Email: andrey@shestakovyachtsales.com

Web: shestakovyachtsales.com/en/

Telephones

USA: +1(954)274-4435

Office hours

Monday – Saturday: **9:00 - 21:00** EDT

Sunday: **closed**

Address



Harbour Towne Marina, 850 NE 3rd St,
STE 213, Dania, FL 33004