

## GAME ON — BERTRAM



**Builder:** BERTRAM

**Year Built:** 2007

**Model:** Sport Fisherman

**Price:** PRICE ON APPLICATION

**Location:** United States

**LOA:** 70' 0" (21.34m)

**Beam:** 18' 8" (5.69m)

**Max Draft:** 6' 0" (1.83m)

Our experienced yacht broker, Andrey Shestakov, will help you choose and buy a yacht that best suits your needs **Game On — BERTRAM** from our catalogue. Presently, at Shestakov Yacht Sales Inc., we have a wide variety of yachts available on our sale's list. We also work in close contact with all the big yacht manufacturers from all over the world.

If you would like to buy a yacht **Game On — BERTRAM** or would like help answering any questions concerning purchasing, selling or chartering a yacht, please call **+1(954)274-4435**

# TABLE OF CONTENTS

TABLE OF CONTENTS	2
SPECIFICATIONS	4
Overview	4
Basic Information	4
Dimensions	4
Speed, Capacities and Weight	4
Accommodations	4
Hull and Deck Information	5
Engine Information	5
DETAILED INFORMATION	6
Vessel Information	6
Exclusions	10
Disclaimer	10
PHOTOS	12
Salon	14
Dinette	14
Salon	14
Galley	15
Master Stateroom	15
Master Head	15
Master Stateroom	15
VIP Head	15
VIP Stateroom	15
3rd Head	16
3rd Stateroom	16
4th Stateroom	16
4th Head	17
CONTACTS	20

---

Contact details	20
Telephones	20
Office hours	20
Address	20

---

# SPECIFICATIONS

---

## Overview

---

Game On" is the only 70 Bertram for sale in the US. Recently updated. Murray helm chairs, release fighting chair. Very clean and ready to go. With the optional MTU's M93 it will cruise 30 knots. **Quality Trades Considered**

- VEEM propellers
- 3000 hour service performed by Palm Beach Power 10/14
- New bottom 10/14
- FCI water maker
- Eskimo extra freezers
- Hydraulic outriggers
- Twin gyros
- Mezzanine A/C

## Basic Information

---

**Category:** Sport Fisherman

**Model Year:** 2008

**Year Built:** 2007

**Country:** United States

## Dimensions

---

**LOA:** 70' 0" (21.34m)

**Beam:** 18' 8" (5.69m)

**Max Draft:** 6' 0" (1.83m)

## Speed, Capacities and Weight

---

**Displacement:** 116404 Pounds

**Water Capacity:** 350 Gallons

## Accommodations

---

**Total Cabins:** 4

**Total Heads:** 4

---

## Hull and Deck Information

---

**Hull Material:** Fiberglass

---

## Engine Information

---

**Engines:** 2

**Manufacturer:** MTU

**Model:** 16V-2000 M94

**Engine Type:** Inboard

**Fuel Type:** Diesel

---

# DETAILED INFORMATION

---

## Vessel Information

---

### SALON

- L-shaped sofa
- Matching chair
- Cocktail table
- Mahogany cabinetry
- Granite counter tops
- Carpeting with acoustic padding
- Home theatre surround sound
- 42" LCD HDTV
- Removable frameless windows with tinted safety glass, aft
- Vinyl headliner (Whisper Wall System)
- Storage compartment behind sofa
- Dry bar with bottle storage
- Central vacuum system
- A/C electronic panel
- Electrical distribution panels
- Lighting
- 12V AC and 24V DC, 120V AC receptacles
- Starboard hull side cabinet storage
- Remote control wood blinds

### GALLEY

- Granite countertops
- Teak and holly flooring
- Sub Zero
- (2) Refrigerator
- Freezer
- Microwave/convection oven
- Four burner cook top w/ full oven
- Dishwasher
- Trash compactor
- Designated storage for dishes and glasses
- Garbage disposal
- Single lever hot and cold faucet
- Vinyl headliner
- Remote control wood blinds

### MASTER STATEROOM

- Port and starboard nightstands with drawer
- Reading lights
- Built in dressers with drawers and shelves
- Combination wood paneling/padded vinyl wall covering
- Hanging locker, oversized
- Under bed drawers
- L-shaped dresser w/ drawers
- Entertainment center with 26" LCD HDT
- Bose entertainment system
- Digital alarm clock
- Wall to wall carpeting

## MASTER EN-SUITE HEAD

- Countertop
- Marble
- Mirrored overhead
- Expansive shower stall
- Teak flooring

## VIP STATEROOM

- Queen Berth
- Cedar hanging locker
- Nightstand w/ drawer
- Upper hull-side storage cabinets
- Entertainment center with 19" LCD TV & AM/FM/CD/DVD player
- Hanging locker, cedar lined with automatic light
- Hull side storage shelves
- Reading lights
- Upper cabinets storage, port and starboard
- Opening hatch overhead with shade and screen
- Vinyl headliner and wall covering-padded
- Digital alarm clock
- Wall to wall carpeting
- Private access to head

## VIP HEAD

- Marble countertop
- Teak wood flooring
- Mirrored overhead
- Stall shower
- Upper cabinets' with mirrored doors
- Opening hatch overhead with shade and screen

---

## STARBOARD GUEST STATEROOM

- Large twin side by side berths with storage beneath
- Cedar hanging locker
- Nightstand w/ drawer
- Upper hull side storage cabinets
- Entertainment center with 19" LCD HDTV, AM/FM, CD, DVD player
- Reading lights
- Opening hatch overhead with shade and screen
- Vinyl headliner and wall covering-Padded
- Digital alarm clock
- Wall to wall carpeting
- Private access to head

## STARBOARD GUEST HEAD

- Marble countertops
- Teak flooring
- Mirrored overhead
- Stall shower
- Upper cabinets with mirrored doors

## PORT GUEST STATEROOM

- Berths, upper and lower with storage below
- Hanging locker, cedar lined with automatic light
- Entertainment Center with 19" LCD TV & AM/FM/CD/DVD player
- Digital alarm clock
- Carpeting, Private access to head
- Vinyl headline and wall covering-Padded

## PORT GUEST HEAD

- Marble countertops
- Teak flooring
- Mirrored overhead
- Stall shower
- Upper cabinets with mirrored doors
- Opening hatch overhead with shade and screen

## FLYBRIDGE

- Helm and companion teak seat, Murray
- Electronic side mount single lever controls with matching wheel
- Table on flybridge, fiberglass
- Rod locker to starboard



- Refrigerated drink box starboard forward
- Molded fiberglass location for life raft

## ELECTRONICS

- Depth sounder
- Radar
- TV Set
- Navigation Center
- Plotter
- Autopilot
- Compass
- GPS
- VHF
- 2 Furuno Navnet VX2 w/ WX Works
- 3 VEI Monitors daylight viewable
- Simrad OP30 GPS plotter
- Simrad AP25 Auto pilot
- Icom MC-604 VHF (2)
- ACR spotlight
- Ocean view night vision camera
- Furuno RD-30 depth sounder
- Clarion AM/FM/CD Sirius player on bridge
- Sea Vision 110v underwater lights (3)
- Electronic ZF transmission back up controls
- 2 Release Marine large helm chairs
- Pipe Welders hydraulic 42' triple spreader outriggers w/ bridge controls
- Myia Epoch US9 super teaser reels
- Underwater light
- Windlass remote control
- Sat phone

## COCKPIT

- The generous cockpit is 270 square feet, larger than those on many larger yachts
- Massive mezzanine seating w/ AC
- Transom fold up gate over tuna door
- Large tuna door
- Large freezers (2)
- Live bait well
- 7' cockpit sole fish box
- Release Marine Contour Series large fighting chair
- Storage lockers
- Awlgrip non-stick deck surfaces
- Molded transom steps

- Molded spiral staircase to the flybridge
- Cockpit shower, hot and cold
- Cockpit sole, teak
- Ice maker
- Eskimo, Mister system
- Underwater lights across transom
- Transom fish box
- Lewmar windlass with chain

## OUTSIDE EQUIPMENT/EXTRAS

- Teak Cockpit
- Cockpit Shower
- Teak cover boards

## ENGINE ROOM

- 2 Mitsubishi ARG anti-rolling Gyros
- 2) 23KW Kohler generators
- Shore Power Inlet
- FCI 800 gal./day Water maker
- 23kw Kohler generators (2)
- 50 amp shore cords (2)

## ADDITIONAL RECENT WORK

- 3000 hour service performed by Palm Beach Power 10/14
- New bottom 10/14
- FCI water maker.
- Eskimo extra freezers
- Hydraulic outriggers
- Twin gyros
- Mezzanine A/C

## Exclusions

---

Owner's personal belongings.

## Disclaimer

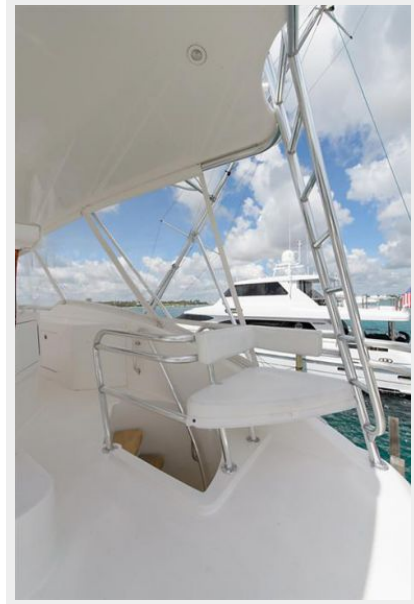
---

The Company offers the details of this vessel or yacht in good faith but cannot guarantee or warrant the accuracy of this information nor warrant the condition of the vessel. A buyer should instruct his representatives, agents, or his surveyors, to investigate such details as the buyer desires validated. This vessel or yacht is offered subject to prior sale, price change, or withdrawal

without notice.

# PHOTOS







Salon



Dinette



Salon



**Galley**



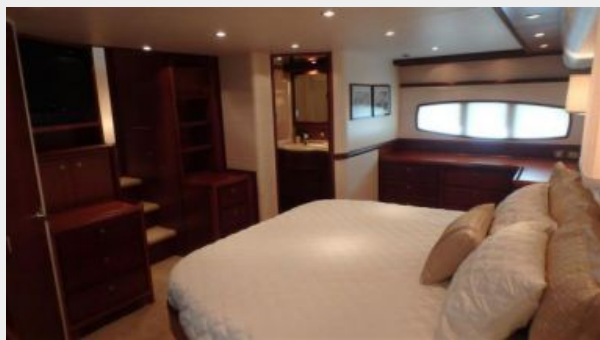
**Master Stateroom**



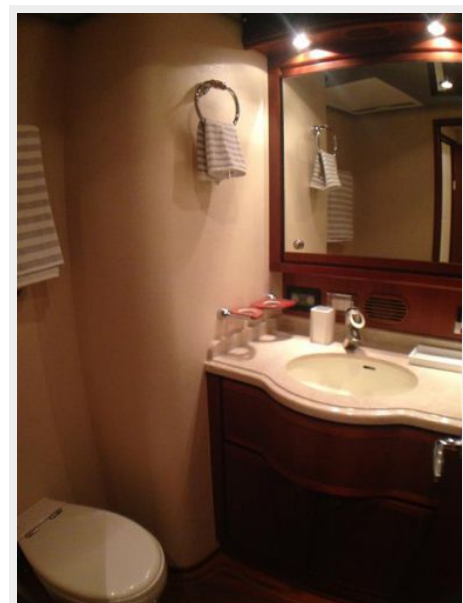
**Master Head**



**Master Stateroom**



**VIP Head**



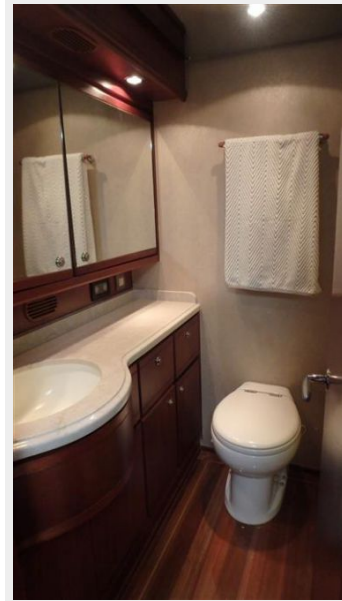
**VIP Stateroom**



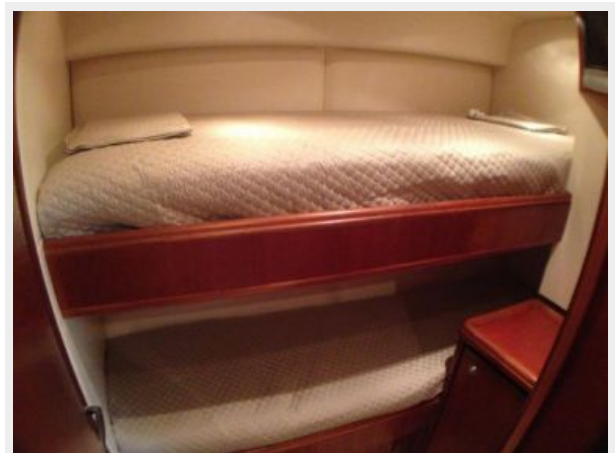
**3rd Stateroom**



**3rd Head**



**4th Stateroom**

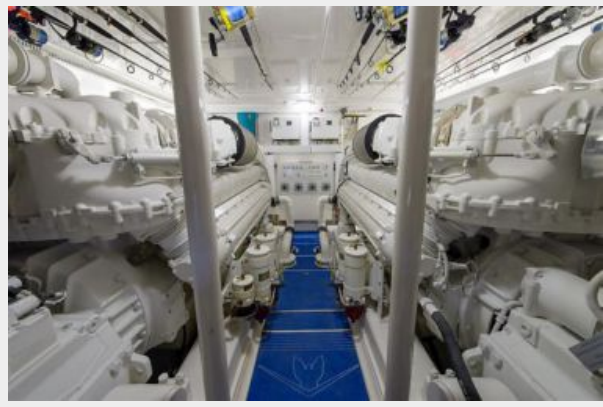




### 4th Head







# CONTACTS

---

Andrey Shestakov, leading yacht broker of the sales department of Shestakov Yacht Sales Inc. Shestakov Yacht Sales Inc., the official representative of the Miami/Fort Lauderdale FL headquarters.

## Contact details

---

Email: [andrey@shestakovyachtsales.com](mailto:andrey@shestakovyachtsales.com)

Web: [shestakovyachtsales.com/en/](http://shestakovyachtsales.com/en/)

## Telephones

---

USA: +1(954)274-4435

## Office hours

---

Monday – Saturday: **9:00 - 21:00** EDT

Sunday: **closed**

## Address

---



Harbour Towne Marina, 850 NE 3rd St,  
STE 213, Dania, FL 33004