

GYRE — DEHLER



Builder: DEHLER

Year Built: 1998

Model: Cruising Sailboat

Price: PRICE ON APPLICATION

Location: United States

LOA: 11' 5" (3.48m)

Beam: 11' 5" (3.48m)

Min Draft: 5' 10" (1.78m)

Our experienced yacht broker, Andrey Shestakov, will help you choose and buy a yacht that best suits your needs **GYRE — DEHLER** from our catalogue. Presently, at Shestakov Yacht Sales Inc., we have a wide variety of yachts available on our sale's list. We also work in close contact with all the big yacht manufacturers from all over the world.

If you would like to buy a yacht **GYRE — DEHLER** or would like help answering any questions concerning purchasing, selling or chartering a yacht, please call **+1(954)274-4435**

TABLE OF CONTENTS

TABLE OF CONTENTS	2
SPECIFICATIONS	4
Overview	4
Basic Information	4
Dimensions	4
Speed, Capacities and Weight	4
Accommodations	4
Hull and Deck Information	4
Engine Information	5
DETAILED INFORMATION	6
Broker's Comments	6
Construction	6
Machinery	6
Electrical Systems	6
Plumbing Systems	7
Tankage	7
Navigation Equipment	7
Domestic Equipment	8
Accommodation	8
Deck Equipment	9
Exclusions	10
Disclaimer	10
PHOTOS	11
CONTACTS	14
Contact details	14
Telephones	14
Office hours	14
Address	14

SPECIFICATIONS

Overview

Very smart dark blue Van de Stadt Dehler from 1998. Just repainted and looking tip-top both on deck and below. Good cruising spec including electric winches, stackpack system and a suite of Raymarine instruments.

Basic Information

Category: Cruising Sailboat

Model Year: 1998

Year Built: 1998

Country: United States

Dimensions

LOA: 11' 5" (3.48m)

Beam: 11' 5" (3.48m)

Min Draft: 5' 10" (1.78m)

Speed, Capacities and Weight

Displacement: 12345.886672 Pounds

Fuel Capacity: 22.982968524 Gallons

Accommodations

Total Cabins: 2

Total Berths: 4

Total Heads: 1

Hull and Deck Information

Hull Material: GRP

Deck Material: GRP

Hull Designer: E.G. Van de Stadt

Engine Information

Engines: 1

Manufacturer: Yanmar

Model: 3GM30

Engine Type: Inboard

Fuel Type: Diesel

DETAILED INFORMATION

Broker's Comments

A very nice, lightly used example of the German built Dehler 37. Hull awlgripped blue last winter, non-skid decks repainted. Electric winches, Raymarine instruments and a diesel heater. These yachts are easy to sail, and perform well. A lot of yacht for the money!

Construction

Hull, Deck & Superstructure Construction:

- Blue hull with new Awlgrip white strips, white transom.
- Non-skid decks with grey non-skid surface.
- Teak laid cockpit seats.
- Fold down swim platform.

Keel & Rudder:

- Spade rudder.
- Fin keel.

Machinery

Engine & Gearboxes:

- 1 x Yanmar 3GM30 27hp.

Propulsion & Steering:

- Pedestal with wrap around wheel electronics mounted on pedestal.
- Shift/throttle lever on pedestal.

Electrical Systems

Shore Power:

- Shore power.

Plumbing Systems

Fresh Water & Water Heating System:

- Pressurised hot and cold water.

Bilge Pumps:

- Electric bilge pump.
- Manual bilge pump.

Tankage

Fuel:

- Approx. total capacity of 87 litres.

Gas:

- Propane tank.

Navigation Equipment

- Autohelm ST60 wind, speed, depth at helm.
- Autohelm multi below at chart table.
- Autohelm autopilot.
- Raymarine autopilot remote ST600R.
- JRC 500 GPS plotter.
- Raymarine RL70 radar/plotter at helm.
- Standard Horizon VHF.

- Selector switch – GPS or PC.
- PC interface.
- Questus radar mount on backstay.
- Suunto compass.

Domestic Equipment

Galley:

- Front opening refrigerator; 12v refrigeration.
- 2-burner stove with oven.

Heads/Showers:

- 1 x Raritan manual WC.
- 1 x Shower.

Heating & Ventilation:

- Eberspacher diesel heater.

Accommodation

Summary of Accommodation:

- Large double bed cabin forward, with hanging lockers and shelves.
- Main saloon has a u-shaped settee to starboard with a dining table.
- Alongside galley to port.
- Chart table with seat.
- Aft double berth cabin with shelves, hanging locker and storage.
- Head containing sink, hand held shower and hanging locker.
- All cabin ports have new lexan.

Deck Equipment

Rig:

- Selden mast swept back spreaders.
- Fractional rig.
- Furelx roller furling headstay.
- 'Main drop' (stack pack) mainsail cover with lazyjacks.
- Rodkick boomvang.
- Spinnaker pole track with car on mast.
- Mount to allow spin pole to be used for gennaker.

Winches:

- Electric Lewmar primary winches with buttons at cockpit and helm.
- Lewmar cabin top winches for halyards.

Sails:

- Mainsail.
- 130% genoa.
- Gennaker with sock.

General:

- Swim ladder.
- Radar reflector.
- 'Cascading' self stow drop boards.
- Large cockpit locker.

Anchoring & Mooring Equipment:

- Simpson Lawrence electric windlass.
- Dock lines.
- Rocna anchor and chain.
- Cockpit cushions with backrests.

Covers, Canvas & Cushions:

- Dodger.
- Fenders.
- Wheel cover.

Exclusions

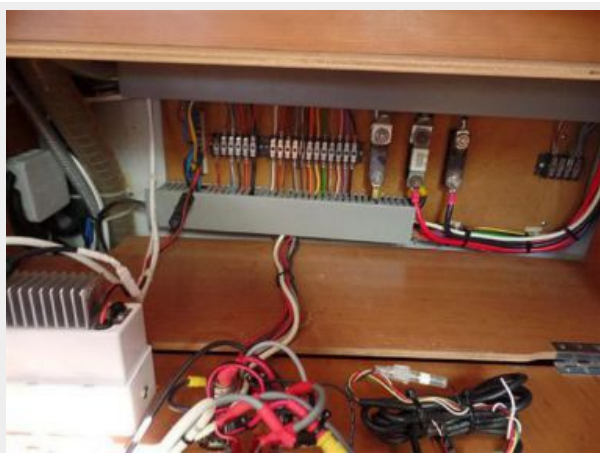
Owner's personal belongings.

Disclaimer

The Company offers the details of this vessel or yacht in good faith but cannot guarantee or warrant the accuracy of this information nor warrant the condition of the vessel. A buyer should instruct his representatives, agents, or his surveyors, to investigate such details as the buyer desires validated. This vessel or yacht is offered subject to prior sale, price change, or withdrawal without notice.

PHOTOS







CONTACTS

Andrey Shestakov, leading yacht broker of the sales department of Shestakov Yacht Sales Inc. Shestakov Yacht Sales Inc., the official representative of the Miami/Fort Lauderdale FL headquarters.

Contact details

Email: andrey@shestakovyachtsales.com

Web: shestakovyachtsales.com/en/

Telephones

USA: +1(954)274-4435

Office hours

Monday – Saturday: **9:00 - 21:00** EDT

Sunday: **closed**

Address



Harbour Towne Marina, 850 NE 3rd St,
STE 213, Dania, FL 33004