

QUIET SUN — HARGRAVE



Builder: HARGRAVE

Year Built: 2014

Model: Motor Yacht

Price: PRICE ON APPLICATION

Location: United States

LOA: 76' 0" (23.16m)

Beam: 20' 0" (6.10m)

Max Draft: 4' 11" (1.50m)

Cruise Speed: 20 Kts. (23 MPH)

Max Speed: 24 Kts. (28 MPH)

Our experienced yacht broker, Andrey Shestakov, will help you choose and buy a yacht that best suits your needs **QUIET SUN — HARGRAVE** from our catalogue. Presently, at Shestakov Yacht Sales Inc., we have a wide variety of yachts available on our sale's list. We also work in close contact with all the big yacht manufacturers from all over the world.

If you would like to buy a yacht **QUIET SUN — HARGRAVE** or would like help answering any questions concerning purchasing, selling or chartering a yacht, please call **+1(954)274-4435**

TABLE OF CONTENTS

TABLE OF CONTENTS	2
SPECIFICATIONS	4
Overview	4
Basic Information	4
Dimensions	4
Speed, Capacities and Weight	4
Accommodations	4
Hull and Deck Information	5
Engine Information	5
DETAILED INFORMATION	6
Design Influences and Color Pallet	6
Main Salon / Dining Features:	6
Galley Features:	6
Bow Features:	7
Aft Deck and Swim Platform:	7
Fly Bridge	7
Master Stateroom and Head	7
Port Guest Stateroom and Head	8
VIP Stateroom and Head	8
4th Guest / Crew Suite	9
Exterior Equipment	9
Mechanical Equipment	9
Interior Equipment	11
Appliances	11
Audio & Visual Equipment	12
Electronics	12
Exclusions	13
Disclaimer	13

PHOTOS	14
CONTACTS	25
Contact details	25
Telephones	25
Office hours	25
Address	25

SPECIFICATIONS

Overview

If you’re buying your “last” yacht, don’t miss this all new widebody design that can be handled easily by a couple. Combining the speed and stability that only comes with a Jack Sarin performance hull platform; she has more room in all the right places, plus state of the art entertainment and electronics. Powered by the new CAT C-18TA 1,150 engines and twin 20 kW gen sets. From the time you enter the main salon you will find yourself saying “wow” over and over during your tour.

Basic Information

Category: Motor Yacht	Sub Category: Flushdeck
Model Year: 2015	Year Built: 2014
Country: United States	Vessel Top: Hardtop
Fly Bridge: Yes	

Dimensions

LOA: 76' 0" (23.16m)	LWL: 63' 1" (19.23m)
Beam: 20' 0" (6.10m)	Max Draft: 4' 11" (1.50m)

Speed, Capacities and Weight

Cruise Speed: 20 Kts. (23 MPH)	Max Speed: 24 Kts. (28 MPH)
Water Capacity: 450 Gallons	Fuel Capacity: 1300 Gallons

Accommodations

Total Cabins: 4	Total Berths: 6
Sleeps: 8	Total Heads: 5

Hull and Deck Information

Hull Material: Fiberglass

Deck Material: Fiberglass

Hull Color: White

Hull Finish: Stainless Steel

Hull Designer: Jack Sarin

Interior Designer: Yacht Interiors by Shelley

Engine Information

Engines: 2

Manufacturer: Caterpillar

Model: C-18 Tier 3 certified

Engine Type: Inboard

Fuel Type: Diesel

DETAILED INFORMATION

Design Influences and Color Pallet

"The interior of the 76' is urban, bold and sexy. The large salon is emphasized by the headliner framing detail of 6" wide planks of Walnut combined with plush Ultra Vinyl. The rich Walnut veneer in a gloss finish has a cool taupe hue that is complemented by the platinum, indigo fabrics and artwork. The (2) cocktail tables (42") and a side table are completely unique designs and are hand made in Ask Burl and Walnut. They were designed to be sculptural, interesting and individual pieces of art. The polished chrome and nickel accents help create a Salon that is inviting, edgy and fun." Shelley DiCondina, Yacht Interiors by Shelley

Main Salon / Dining Features:

Gloss Walnut	9' x 6' Plush contemporary Sectional Sofa
Ash Burl Wood Details	Striking architectural details on ceiling
(2) Elegant Club Chairs	Large Flat Screen TV and A/V center
Walk up wet bar w/marble top	Starboard Bar with Clear Ice & sink
Stemware glass racks	Sculptural Cocktail tables with glass top
Cantalupi Chrome LED lighting	Slim Profile AC supply
Fabrica Carpet throughout	Designer selected accessories

The designer's main goal when creating the salon arrangement was to maximize the space and not waste one inch. There had to be a large and plush/comfortable seating for socializing for at least 8, a 70" TV screen along with an elegant bar cabinet with all of the amenities including ice. All of this areas coexist in an area 17' 9" x 13'.

Forward of the salon, to starboard, is a beautiful Day head for guests convenience. It is perfectly appointed with a marble top of Pearlato Sicilia and an under mount ceramic sink and contemporary polished chrome fixtures.

Galley Features:

Gloss Walnut	GE Designer Appliances SS
Franke Under mount Sink	Custom Curved U Settee
Solid Teak Plank Floor	Light Tropic Granite

Flat screen TV

Large Pantry

Helm chair in Ultra Vinyl

The galley area has a large dining settee Majilite Destiny and is the perfect conversation area; upholstered in an ivory Ultra Vinyl. The flooring is satin teak planks which complements the other understated finishes on board.

Bow Features:

Sun pad with Headrest

Large Settee with custom pillows

Walk around to aft Deck

Dual Side lockers with GFI and Storage

Aft Deck and Swim Platform:

84" Custom Teak Table w/ Inlay

Seating for (8)+

Teak Deck

SS Custom Gates to Swim Platform

Flat Screen TV

Dual Aft Stairs to Swim Platform

Storage Under Bench

U-Line refrigerator & Ice

Shower w/ Hot and Cold

Hoop Rails on Swim Platform

Fly Bridge

Barbeque area with Ice Maker

Custom Bar

Helm Chair and Helm Console

Large settee to port side forward

Hardtop with LED lighting

(3) Bar Stools and total seating for (12)

Large settee with Teak Dining Table

Heavy Duty Davit

Enclosed slide glass top to aft deck

Master Stateroom and Head

King Bed with storage drawers

Headboard Walnut frame and Capice Inlay

(12) Drawer Dresser Large

(9) Drawer/Vanity /Desk

(3) 3' Hanging Lockers	32" Flat Screen TV
Custom Window treatments	Italian Bedding and Linens
Scandia Pillows and Blankets	Egyptian Cotton Towels
(2) Head Floors of Solid Teak Planks	(2) Vanities of Pearlato Sicilia Marble
Marble seat in Shower	14 sq. foot shower
Dual Ceramic sinks	(2) Frosted Privacy Glass Partitions
Frameless Glass shower enclosure	Extra-large Port Lights

Port Guest Stateroom and Head

(2) Twins convert to Queen	Headboard with Faux Chinchilla Upholstery
3' Hanging Lockers	32" Flat Screen TV
Night Stand that repositions	Storage under Bed/Pneumatic and Drawers
Custom Window treatments	Italian Bedding and Linens
Scandia Pillows and Blankets	Egyptian Cotton Towels
Head Floor of Solid Teak Planks	Vanity of Pearlato Marble
Marble seat in Shower	8.75 sq. foot shower
Ceramic sinks	Extra-large Port Lights

VIP Stateroom and Head

(1) King Bed	Headboard with Walnut and Mirror
(2) Hanging Lockers	32" Flat Screen TV
(8) Drawers at foot of Bed	Storage port and Starboard Counter tops
Custom Window treatments	Italian Bedding and Linens
Scandia Pillows and Blankets	Egyptian Cotton Towels
Head Floor of Solid Teak Planks	Vanity of Pearlato Marble
Marble seat in Shower	8.0 sq. foot shower

Ceramic sink

Port Lights

4th Guest / Crew Suite

(2) Twin / convert to Queen

Pullman Above

(2) Hanging Lockers

Flat Screen TV

(1) Night Stand/Dresser

Upper cabinet storage

Privacy Pocket Door System

Walnut detail to match Salon

Custom Window treatments

Custom Bedding and Linens

Scandia Pillows and Blankets

Egyptian Cotton Towels

Head Floor of Solid Teak Planks

Vanity of Pearlato Marble

Marble seat in Shower

8.75 sq. foot shower

Ceramic sinks

Port Lights

Storage under Bed/Pneumatic and Drawers

Exterior Equipment

Kahlenberg horn DO-A Chrome 2" Stainless oval hull banding with wood insert & 2" offset from hull (4) 2" "U" shaped stanchions at swim platform Stainless steel corner hawse pipe with rollers and cleat at port & stbd side of aft deck Aft deck molded stairs to boat deck Aft deck teak floor Reinforced FRP box in Aft Deck ceiling for USA supplied Drop Down Lift Sliding mechanism for teak table top at Aft Deck Aft deck chairs w/vinyl cushions x (5) Aft deck FRP seating Teak on aft deck and stair to swim platform Custom storage FRP cabinet for U-Line Fridge at port side wing of Aft Deck (1) S.S. Umbrella base and sleeve at aft boat deck seat 1-1/2" Stainless Steel staple rail at fly bridge FRP Boxes on upper deck for BBQ Grill and Ice maker Starboard U-Shaped seating, sliding table with (1) removable leaf, and FRP walkup bar with sink and faucet Sliding mechanism for Teak Table in F/B Helmsman chair at forward Port side of Fly bridge with space for fitting one freezer under the chair (2) S/S Cup holders in F/B (5) frameless glass windows on lower deck (5) FRP port lights Hargrave style mast (1) Mast Head Light Glass windshield with EZtoCY enclosure panel on side and back of Hard Top (8) Cantalupi Dyana 105 waterproof bow deck lights

Mechanical Equipment

V-Shaped keel with longitudinal stringers Fiberglass hand laid molded hull Stringers with foam

cored reinforcement Stringers bonded to hull in several layers of glass cloth and resin Deck and superstructure with foam cored reinforcement under fiberglass layers Interior structural components all bonded to hull included bulkheads and frames Foam cored sandwich deck construction for strength FRP main and lower decks FRP Bulkheads Non-skid decks Handrails stanchions, and fittings made of stainless steel 316 alloy Heavy duty 1 1/2" handrails and 1 1/4" stanchions Maxwell windlass VWC 3500 with S.S. 150 lbs anchor and 200 feet of anchor chain Chain stripper w/ chain stop Remote windlass operation from bridge Non-skid swim platform Fiberglass swim platform & stainless steel hinged swim ladder Built-in shower with hot/cold water above swim platform 3" Stainless Steel shafts equivalent to Aquamet 22HS Extra cost for upgrade to (2) 3-1/2" x 14' Aquashaft 22HS with brackets, FRP hoses as well as shaft seals plus relevant accessories in place of 3" S/S shafts 4-blade bronze propellers Easy accessible shaft logs w/bronze housing for packing gland Hydraulic steering by Hynautic easily adaptable autopilot Emergency tiller Stainless steel rudders Engine alarm system - low oil pressure - high temp. @ flybridge and lower helm 24 volt lights and 110 volt power receptacles Underwater exhaust w/ Idle by pass Fresh water fitting for filling engine and generator expansion tanks Y valve for dockside pump-out Sealand macerator pump (2) Lovett sump pumps Groco water pressure pump (20 - 30 lbs.) 1300 gallons of fuel Cat gauges at helm lower & upper Locker upper front in bow Color coded wiring for easy identification Stainless steel fresh water tanks with 450 US Gallons of total capacity (1) NEMAR 25 AMP DC 24V to DC 12V converter (6) Bilge pumps (8) 200 amp / hr batteries for engines and ship's power (3) Professional Mariner battery charger Separate 120 amp / hr starting battery generator Enclosed acid-proof fiberglass battery boxes with cover Main electric panel with separate AC power control and AC circuit breaker panel 24 volt DC monitoring and main circuit breaker panel 110 volt duplex receptacles located throughout including engine room Indirect lighting under valances in salon and staterooms 24 volt DC monitoring & main circuit breaker panel Modern console with all gauges Easy access to dashboard controls Alarms for low oil and engine temperature Finished sub floor for carpet Shower in Master Stainless steel door from aft deck Flybridge seat covers Helm seating on flybridge Passenger seating on flybridge bench seat Controls and gauges on flybridge Heavy duty 3/8" Lexan Venturi windshield Radar arch (3) Freeman Hatches Lexan access hatch to bridge Lights in closet on micro switch Cedar lined closet Large pneumatic lift to fully access storage under bed in master and VIP (2) 100 AMP Galvanic Isolator Sea Chest White perforated insulation panels in Engine Room Double layer of sound & heat insulation in Engine room bulkhead fwd, aft & ceiling Hard top Safety rails around both main engines Racor 1000 FG fuel filters/ water separator, each engine x 2 Aeroquip fuel hose for fuel system in place of standard Naiad HPS-10HT-25HP Hydraulic bow thruster with controls Naiad Stabilizer 254 w/9.0 sq fins w/ Multisea 2000 Double stabilizer & bow thruster backup pump on back of port & stbd engine (1) Glendinning CM8 Cablemaster out stern 100 amp w/ white cord 100' (1) Shore power inlet in built-in locker w/75' shore power cable at forward Port side Glendenning controls station upper helm and one remote Phasor 30kw Gen x 2 Water drop exhaust to generator Cruiseair chilled water (2) 4 tons Sentry battery charger - 80amp x 1, 30 amp x 2 (6) Headhunter heads (1) Headhunter M1-115/230V waste discharge pump, and Headhunter sender units Seafire Extinguisher System with manual discharge system in crew Tide Marine dripless shaft seals on shaft and rudders View window on engine room door w/S/S watertight door Hargrave logo Oil change Reverso Eng. Gears. & Gen. (1) set of Bennett Trim Tabs SS model 36" X 15.3" w/o

gauges Delta T Head Vent System with a total of (5) heads, (1) vent pipe is split to vent the 5th head with switches. Storage locker to stbd side for Marquipt ladder Dolphin AC/DC Light Transformers (2 1 x 80 amp) Security breaker switch for AC power (2) Kraus & Naimer C80 booster switches for isolation transformer Watertight bulkheads in engine room Torrid or equivalent 20 US Gallon water heater x 2 (3) 14 US Gals sump tanks with access hatch Breaker and through hull for watermaker Sea Recovery Watermaker 700 gallon/day 5" compass at upper helm Davit Quicklift 1600 Hydraulic w/rotation Marquipt Sea Stairs 13.5' Aqua Scan Tender w/50 hp Yamaha Safety Package-Life Jackets/Fenders/Fire Extinguishers/Dock Lines/Flares/Dual plug phone/TV cord

Interior Equipment

Straight Grain Walnut wood interior Vimar light switch throughout vessel w/dimmers (12) Air Auto Sliding Door with turn off switch Custom pillows (47) L-shaped couch (2) Marble counter tops, (1) next to the Dining table & (1) for Bar top in Salon Cocktail Table in Main Salon Stainless Steel Panel for Cocktail Table in Salon Curved doors with curved glass for Aft Salon stbd side walkup bar Sink/Faucet and Granite counter top in Aft Salon Stbd side Granite counter tops in galley Dayhead with wood veneer finish, Kohler K-2298 Compass Biscuit Vessel sink (undermount), Grohe sink faucet, choice of granite or marble counter top and ply teak floor Decorative Mirror w/Makore (Straight) wood frame in Dayhead (1) Kohler K-2298 Compass Biscuit Vessel Sink (undermount) in Crew (4) Kohler K-2355-96 Biscuit Vessel sink (undermount) in VIP, Port Guest & Master x 2 FRP and Alwgrip shower walls x 4 with FRP/Alwgrip shower seats Marble Shower seats in VIP, Port Guest, Master and Crew Teak wood floor in all heads 3" Engineering Teak Floor for bathroom in VIP, Port Guest and Master All shower pans have teak grates floors Bi-folding shower door in chrome (2) Frameless Glass Clear Shower Doors in Master Bathroom (2) Shower Door towel bar/handle in Master Bathroom (2) Frosted Glass Privacy walls next to each toilet in Master Bathroom (2) Marble counter tops next to His and Her Vanity units in Master Bathroom Sliding mechanism to allow (1) single bed to slide in Port Guest and Aft Crew (1) Pullman Bunk at Crew Cabin (1) Interior stairway up to fly bridge with manual access hatch Carpet and underlay installed

Appliances

GE WCVH4800KWW White Washer in Laundry Room GE DCVH480EKWW White Dryer in Laundry Room GE Monogram ZIC30GNDII Fridge in Galley GE 945BMBB Black Cooktop with JK5000SFSS S/S Oven in Galley GE PVM9195SFSS Stainless Steel Microwave (to vent outside) in Galley Fisher & Paykel DD24DCHTX7 S/S AC110V/60HZ Dishwasher in Galley GE GFC720F Black Disposal (Sink top switch) in Galley Franke USBSK800-18 Stainless Steel Sink in Galley Vigo VG02001CH Chrome Faucet (pull out spray) in Galley U-Line CLR2160 Black Ice Maker (w/drain pump) in Salon U-Line 2115R White Fridge at Aft Deck U-Line CLR2160 White Ice Maker (w/drain pump) at Aft Deck U-Line 2115R White Fridge in Fly Bridge U-Line CLR2160 White Ice Maker (w/drain pump) in Fly Bridge Edgestar FP861 Grey Freezer in Fly Bridge Fire Magic 3C-S1S1P-A Stainless Grill (propane w/lift-up top) in Fly Bridge Stainless Sink on Fly

Bridge Chrome Faucet on Fly Bridge

Audio & Visual Equipment

KVH Tracvision HD7 for USA coverage mounted @ Mast Edson 5" tower for KVH Edson adjustable mount with starboard wedge Shakespeare 2030 TV antenna Shakespeare 2025 controller to switch from terrestrial & dockside feed @ Main Salon TV distribution board Fusion MS-IP700i Stereo mounted @ Flybridge helm Fusion MS-NRX200I remote mounted @ Bow Fusion 60ft wired remote extension JL Audio 7.7" speakers x 3 pairs RTI waterproof remote for zone 2 & audio control from Main Salon Samsung 40" LED HD TV mounted @ Aft Deck Motivated Design 40" fold-up TV lift Motivated Design remote kit Vanco HDMI cable DirecTV HD receiver (mounted @ salon for Aft deck) Monster cable JL Audio 7.7" speakers RTI T2C handheld remote Denon AVR-X4000 A/V receiver DirecTV HD DVR receiver mounted @ Main Salon Samsung BDE5700 Blu Ray disc player Apple TV Vimar Network outlet Speakercraft Accufit CRS7 One speakers x 5 Niles SW65N powered subwoofer iPad custom control system Sonance Launchport base station Sonance Launchport sleeve iPad Mini RTI iPad license Monster cable Middle Atlantic sliding rack system Triplite UPS Sonance Sonamp 875D amplifier Extron Audio matrix Samsung 29" LED HD TV mounted @ Galley TV mount ultra thin Speakercraft Accufit CRS7 One in-ceiling speakers x 1 pair DirecTV HD receiver (mounted @ salon for Galley) Apple TV RTI T2C handheld remote Monster cable Samsung 32" LED HD TV mounted @ Fwd VIP TV mount ultra thin DirecTV HD receiver Apple TV Niles IR expansion kit Monster cable Triplite UPS Samsung 32" LED HD TV mounted @ Port Guest TV mount ultra thin DirecTV HD receiver Apple TV Niles IR expansion kit Monster cable Triplite UPS Samsung 46" LED HD mounted TV @ Master TV mount ultra thin Denon AVR-E400 A/V receiver DirecTV HD receiver Samsung Blu ray player Apple TV Speakercraft Accufit CRS7 One in-ceiling speakers x 1 pair Niles SW65N powered subwoofer iPad custom control system Sonance Launchport basestation Sonance Launchport sleeve iPad Mini RTI iPad license Monster cable Middle Atlantic sliding rack system Triplite UPS Toshiba 19" TV/DVD Combo TV mount ultra thin DirecTV HD receiver DirecTV H25 RF remote kit Triplite UPS Newmar Converter Concord 500' cable x 5 Part cable 500' Surge outlet strip x 7 Concord snap-n-seal tool Purple snap for cable x 100 Samsung 75" LED HD TV mounted @ Main Salon TV mount ultra thin large

Electronics

Furuno TZT14 14" multi-function display x 2 Furuno DRS6A Radar Sendor (4' Open Array, 64 N.M. 6KW) Furuno NAV 3D 6KW 30M Cable Furuno PSU012 Radar Power Supply Furuno NMEA GPS Antenna (1 as backup) x 2 Lilly Basic Stainless GPS Mount x 2 Furuno HUB101 Nav Interswitch Furuno NAV 3D 5M Network Cable x 3 Furuno WS-200WX Ultrasonic Weather Station Lilly 12" fixed S/S deck mount Furuno RD33 (4.3" Color LCD) Naiigational data organizer x 2 Fueuno NMEA 2000 Depth, Speed and Temp transducer Furuno NMEA 2000 Install Kit Standard Horizon GX5500S VHF radio with built in DSC functionality Newmar Hailer Horn 60/40

Newmar Hailer Horn ext cable 75' Digital 500 Series 16' VHF Antenna x 2 Lilly round base swivel mount and upper support x 2 Furuno NavPilot 700 with 4.6" controller Furuno NavPilot 700 ext cables Furuno NavPilot HRP11-24 Hydraulic pump 24vdc Digital Custom Cable Furuno DFF1 Digital Network Sounder Furuno 50/200khz, 600w Bronze thru-hull transducer (depth, speed & temp) Furuno 525STID-MSD7 ext cable ACR RCL-100D 24vdc searchlight w/controller Noland NMEA Expander 1 to 4 Concord Marine Dome Fixed Cameras x 2 (1) @ engine room 1@ aft deck) Pelco Siamese fused camera cable Flir Video Splitters x 2 (both cameras to both screens) Concord 24 to 12 VDC 5 AMP Power Converter Wireless Access Router x 3 Part cable CAT 5E 500' Wave Wi-Fi Broadband 2 source router Ericsson W35 with wireless data Concord 8 port Cisco Ethernet Switch Phone distribution Board Panasonic 824 phone system with caller ID Panasonic phone system caller ID card Panasonic 7731 speaker phones x 6 Part cable shielded x 2

Exclusions

Owner's personal belongings.

Disclaimer

The Company offers the details of this vessel or yacht in good faith but cannot guarantee or warrant the accuracy of this information nor warrant the condition of the vessel. A buyer should instruct his representatives, agents, or his surveyors, to investigate such details as the buyer desires validated. This vessel or yacht is offered subject to prior sale, price change, or withdrawal without notice.

PHOTOS

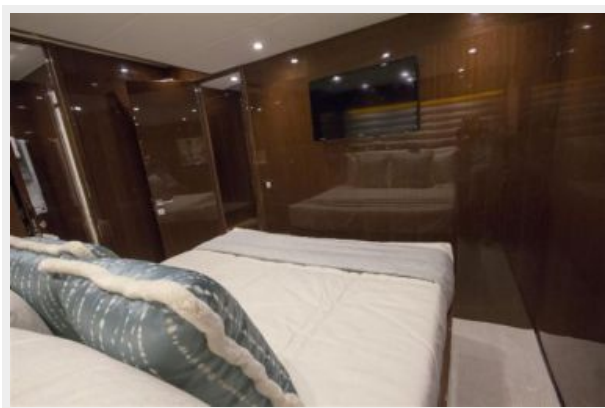










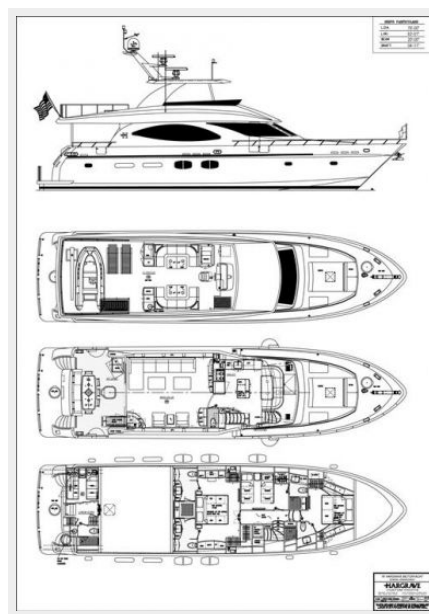
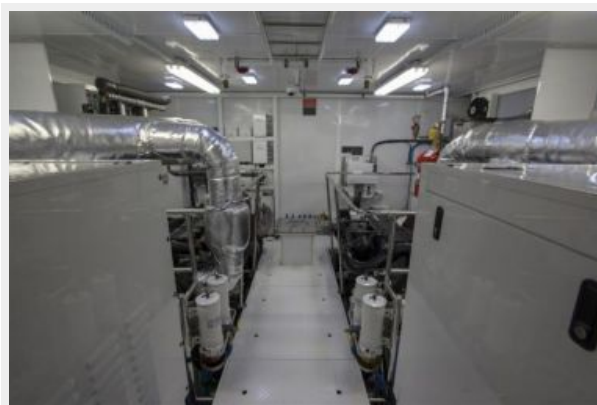












CONTACTS

Andrey Shestakov, leading yacht broker of the sales department of Shestakov Yacht Sales Inc. Shestakov Yacht Sales Inc., the official representative of the Miami/Fort Lauderdale FL headquarters.

Contact details

Email: **andrey@shestakovyachtsales.com**

Web: shestakovyachtsales.com/en/

Telephones

USA: **+1(954)274-4435**

Office hours

Monday – Saturday: **9:00 - 21:00 EDT**

Sunday: **closed**

Address



Harbour Towne Marina, 850 NE 3rd St,
STE 213, Dania, FL 33004