

SOB STORY — SEA RAY



Судостроитель: SEA RAY

Длина общая: 54' 0" (16.46m)

Год постройки: 2012

Ширина: 15' 2" (4.62m)

Модель: Крейсер

Цена: ЦЕНА ЯХТЫ ПО ЗАПРОСУ

Местонахождение: United States

Купить **Sob Story — SEA RAY** а также выбрать подходящую вам яхту из нашего каталога яхт вам поможет опытный яхтенный брокер Андрей Шестаков. На сегодняшний день компания **Shestakov Yacht Sales Inc.** имеет большое количество яхт в собственном списке продаж, а также тесно сотрудничает со всеми крупными яхтенными производителями по всему миру.

Для того чтобы купить яхту **Sob Story — SEA RAY** а также проконсультироваться по любому вопросу связанному с покупкой, продажей, чартером яхт позвоните по телефону **+7(918)465-66-44**.

ОГЛАВЛЕНИЕ

ОГЛАВЛЕНИЕ	2
ХАРАКТЕРИСТИКИ	5
Обзор	5
Основная информация	5
Размеры	5
Скорость, вместимость и масса	5
Размещение	5
Корпус и палуба	5
Информация о двигателе	6
ПОДРОБНОЕ ОПИСАНИЕ	7
Features	7
Hull & Deck Equipment	7
Cockpit	8
Salon	9
Galley	9
Master Stateroom	10
Forward Stateroom	10
Mechanical / Technical Systems	11
Исключения	13
Отказ от ответственности	13
ФОТОГРАФИИ	14
Bow Profile	14
Profile	14
Front Profile	14
Bow	14
bow	15
Cockpit	15
Cockpit	15

Cockpit	15
Cockpit	15
Cockpit	15
Cockpit	16
Cockpit	16
Helm	16
Helm	16
Helm	16
Salon	16
Salon	17
Salon	17
Galley	17
Galley	17
Galley	18
Laundry	18
Master Stateroom	18
Master Stateroom	18
Master Head	19
Master Stateroom	19
Master Head	19
Forward Stateroom	19
Forward Head	20
Forward Stateroom	20
Forward Head	20
Port Walkway	20
Starboard Walkway	21
Swim Platform	21
Engine Room	21
Engine Room	21

Engine Room	21
Engine Room	21
Engine Room	22
Engine Room	22
Engine Room Access	22
Stern Profile	22
Running	23
Running	23
Profile	23
Running	23
КОНТАКТЫ	24
Контактная информация	24
Телефоны	24
Время работы	24
Адрес	24

ХАРАКТЕРИСТИКИ

Обзор

WILL BE SHOWN AT THE PALM BEACH BOAT SHOW 3/26/15 THRU 3/29/15 AT THE ALLIED MARINE DISPLAY. 54' Sea Ray Sundancer with twin Cummins 600 hp engines.

Основная информация

Тип судна: Крейсер	Модельный год: 2012
Год постройки: 2012	Страна: United States
Верх: Hardtop	Кубрик: Да

Размеры

Длина общая: 54' 0" (16.46m)	Ширина: 15' 2" (4.62m)
------------------------------	------------------------

Скорость, вместимость и масса

Вместимость воды: 150 Gallons	Вместимость сточного бака: 68 Gallons
Объем топливного бака: 1 Gallons	

Размещение

Всего кают: 2	Всего коек: 2
Спальные места: 4	Всего ком. состава: 2

Корпус и палуба

Материал корпуса: Fiberglass

Информация о двигателе

Двигатели: 2

Производитель: Cummins

Модель: QSM-11

Тип двигателя: Inboard

Тип топлива: Diesel

ПОДРОБНОЕ ОПИСАНИЕ

Features

- Cummins QSM-11 715 hp diesel engines with Zeus pod drives
- Zeus Drive System includes Skyhook Station-Keeper technology
- SmartCraft instrumentation and VesselView display
- One-piece bilge access service hatch.
- Standard dual Raymarine E120 widescreen units with 4-kW high definition radar
- Cockpit convertible seat lounge
- Sirius satellite receiver with antenna (N/A outside N. America)
- Salon 32" flatscreen TV.
- Fold-out salon sofa sleeper conversion.
- Fiberglass hardtop with enclosure.
- Isolation transformer.
- Water manifold system.
- Oil changer system for engines and generator
- 68-Gallon holding tank with dockside pump-out.
- Carbon Monoxide Monitors
- Carpet, 55-Ounce 100% Stainmaster® BCF Nylon w/Dupont® Advanced Teflon Repel System
- Carpet Runners, Interior (Sunbrella)
- Doors, High-Gloss Solid Wood
- Handrails, Stainless Steel
- Lighting, 24V LED
- Lighting, 24V Indirect LED
- Lighting, 120V LED
- Outlet, 12V Accessory
- Outlets, 120V GFI Protected
- Outlets, Phone
- Outlet & Switch Plates - Polished Chrome Finish
- Pillows, Accent
- Storage, In-Floor
- Cherry Wood Interior Finish

Hull & Deck Equipment

- Bottom Paint
- Bow Rail, 316 Stainless Steel w/Welded Stanchions, Intermediate Rails & Life Lines
- Cleats, Custom Sea Ray® Thru-Bolted Bollard Style - Stainless Steel (8)
- Deck Fill Plates, Stainless Steel
- Deck Rails, 316 Stainless Steel

- Gel Coat - Arctic White Topsides
- Gel Coat - Black - Hullsides
- Graphics, Striping
- Handrails, 316 Stainless Steel
- Hatch, Deck Vent - Translucent w/Locks & Sky Screen Cover (Trapezoid)
- Hull Windows, Custom, Molded-in w/Opening Portlights - Salon, Galley & Aft Head
- Lights, Navigation
- Portlights, Stainless Steel (2 Opening, 4 Fixed)
- Resin, High-Performance Vinylester
- Rub Rail, PVC w/Stainless-Steel Insert
- Skylight, Flush Mount w/Retractable Sunshade - Salon
- Stringer System, Fiberglass
- Sun Pad, Forward Deck w/Adjustable Backrests, Cover & Built-In Drink Holders
- Hydraulic Swim Platform, Extended w/Concealed Stainless-Steel Four-Step Swim Ladder
- Thru-Hull Fittings, Stainless Steel
- Vent System, Engine Room w/Stainless-Steel Grills
- Windshield, Tempered/Tinted Curved Glass w/Electric Front Vent & Side Windows
- Windshield Washer System
- Windshield Wipers, 24V
- Anchor, Stainless Steel - Polished
- Anchor Chute, Stainless Steel
- Anchor Rope/Chain Storage w/Gas-Assisted Hatches
- Windlass, Rope/Chain w/Foot Switches
- Aft Curtain w/Stratoglass Window
- Windshield Shades
-

Cockpit

- (11) Beverage Holders
- Carpet Liner, Snap-In
- Door, Cabin Entry w/Color-Matched Frame & Tempered/Tinted Glass (Sliding & Lockable w/Screen)
- Door, Transom - Acrylic w/Stainless-Steel Frame
- Floor Liner, Self-Bailing Fiberglass w/Gas-Assisted Engine Room Service Hatch
- Handrails, 316 Stainless Steel
- Hardtop, Fiberglass w/Retractable Sunroof, Overhead Lighting & Electronic Dimmer
- Icemaker, 120V
- Lighting, White
- Outlet, 12V Accessory
- Outlet, 120V GFI Protected
- Outlet, Cable TV
- Seating, Helm (2) w/Armrests, Reclining Backrests, Teak Footrests, Heavy-Duty Adjustable

Pedestals & Pivoting Fiberglass Base

- Seating, Starboard Lounger - Forward
- Seating, Aft - L-Shaped w/Fiberglass Storage Bases & Hinged Cushions
- Steps, Boarding (Molded-In) - Starboard
- Steps, Molded Deck Access (From Transom)
- Stereo, Sony® - 12V AM/FM: - Single CD Player - Sirius® Satellite Receiver w/Antenna - iPod® Interface w/Docking Station - MP3 Port - Amplifier, Subwoofer, Speakers (4) - Digital Cockpit Remote Control
- Storage, Side Panel - Port Cockpit
- Sun Pad, Aft Cockpit Conversion w/Upper & Lower Storage Below
- Table, Cockpit - Varnished Teak with cover
- Wet Bar w/Fiberglass Sink, Faucet, Stainless-Steel Handrail, Solid-Surface Countertop, Trash Receptacle w/Trash Chute & Carry-On Cooler - Starboard

Salon

- Blinds, Silver Alloy
- Entertainment Center: - Bose® Lifestyle 48, 5-Channel Home Theater System Includes: Bose Media Center (Interfaced w/Sirius Satellite Receiver), Jewel Cube Speakers (4), Horizontal Center Channel Speaker & Acoustimass® Module - TV, 46" Flatscreen LCD HDTV
- Flooring, Wood
- Seating, Sofa (Ultraleather™) w/Pullout Bed - Starboard
- Steps, Entryway - Teak w/Stainless-Steel Handrail
- Storage, Gunwale Cabinets
- Table, Convertible Dining/Coffee (Movable) w/High-Gloss Wood Surface & Storage Below

Galley

- Blinds, Silver Alloy
- Coffeemaker, 120V
- Countertop, Solid Surface w/Stainless-Steel Sink, Single-Lever Faucet w/Pullout Spray Head & Solid-Surface Sink Cover
- Flooring, Wood
- Freezer, Under Counter - 120V
- Microwave/Convection Oven w/Stainless-Steel Face - 120V
- Power Vent, 24V
- Refrigerator, Under Counter - 120V
- Storage, Drawers w/Cutlery Insert
- Storage, Cabinets - Upper & Lower
- Stove - Two Burner w/Pop-Up Cookware Retainers
- Trash Receptacle

Master Stateroom

- Bed, Queen-Size w/Innerspring Mattress, Pillows, Sheets, Coordinated Spread, Drawers & Storage Below
- Entertainment Center: - Bose Lifestyle 3--2--1, 2.1-Channel Home Entertainment System Includes: Bose Media Center, Gemstone Speaker Arrays (2) & Acoustimass Module - TV, 32" Flatscreen LCD
- Mirror, Large - Trimmed
- Storage Cabinet w/Shelves

Head/Shower:

- Bath Accessories - Towel Rings (2), Bathroom Tissue Holder, Soap Dish & Robe Hooks (3)
- Blinds, Alloy
- Door, Privacy (Access to Stateroom)
- Flooring, Tile - Shower & Head
- Handrails, Stainless Steel
- Head, (VacuFlush®) - Electric
- Hanging Locker, Cedar Lined w/Drawer Storage Below
- Mirror, Large, Full Length
- Power Vent, 24V
- Shower w/Teak Seat, Adjustable Shower Wand & Acrylic Door
- Storage, Shelves - Dedicated Toiletry
- Vanity w/Solid-Surface Countertop, Tile Backsplash,
- Undermount Sink w/Faucet & Storage Below w/Trash Receptacle

Forward Stateroom

- Bed, Queen-Size Island Style w/Innerspring Mattress, Pillows, Sheets & Coordinated Spread w/Storage Below
- Entertainment Center: - Bose Direct Reflecting Cube Speakers (2), Acoustimass Module & SA-3 Amplifier - TV, 19" Flatscreen LCD - DVD Player
- Flooring, Wood
- Hanging Locker, Cedar Lined w/Shoji Doors
- Storage, Gunwale Shelves

Forward stateroom head / shower:

- Bath Accessories - Towel Bar, Bathroom Tissue Holder, Soap Dish & Robe Hook
- Flooring, Tile
- Handrails, Stainless Steel
- Head, (VacuFlush) - Electric
- Power Vent, 24V

- Shower w/Teak Seat, Adjustable Shower Wand & Acrylic Door
- Storage, Medicine Cabinet - Mirrored
- Vanity w/Solid-Surface Countertop, Tile Backsplash, Undermount Sink w/Faucet & Storage Below w/Trash Receptacle

Mechanical / Technical Systems

Air Conditioning/Heating:

- Zone-Controlled Reverse-Cycle System, 240V (32,000 BTU) w/Custom Integral Vent System - Cabin
- Zone-Controlled Reverse-Cycle System, 240V (32,000 BTU) - Cockpit

Control Station:

- Battery Parallel Switch - Engines
- Compass
- Dash, Gel Coated
- Fuel Gauges (2)
- Horn, Air - 24V
- Instrument Panels - High-Gloss
- Outlet, DC
- SmartCraft® Digital Throttle & Shift (DTS)
- SmartCraft VesselView Display (2): - Propulsion: Engine Hour Meters, Engine Status, Performance & Fuel, Peak Performance, Boost Pressure (Optional), Troll Control & Cruise Control - Vessel: Vessel Status, Tank Status, Steering Position & Generator Data - Environment & Navigation: GPS Interface, Depth & Water Temperature, Depth Alerts, Trip Log Information, Fuel to Waypoint Data & Navigation Data - Active Alarms/Details - Alarm History/Details
- Spotlight w/Dual Halogen Bulbs - Remote Controlled (ACR®)
- Steering, Power Assisted w/Leather Wrapped Isotta® Tilt Wheel
- Switches, Illuminated Weatherproof Rockers & Electronic Dimmer Control
- Switch Panels, Backlit - High-Gloss

Electrical Systems:

- Batteries, 8-D w/Boxes (4)
- Battery Charger/Converter, 240V/50 Amp/24V
- Battery Charger Overcurrent Protection
- Battery Equalizer, 65 Amp (2)
- Battery Solenoid Switches, 12V (2) & 24V (3)
- Cable Television System w/Inlet (Includes Phone Inlet & Phone Shore Cord), TV Shore Cord, Coax Outlets, Gain Control & Antenna
- Panel, Circuit Breaker - Remote

- Panel, DC Main Breaker
- Panel, Main Distribution - AC
- Shore Power, Cablemaster™ (Glendinning), 240V/50 Amp w/75' Cord & Wireless Remote
- Shore Power, Secondary - 50 Amp/ 120V/60-Cycle w/75' Cord
- Transformer, Shore Power Isolation - 120V/50 Amp, 240V/50 Amp
- Wiring, Color-Coded w/Chafe Protection

Electronics:

- Autopilot
- Electronics Circuit, 50 Amp/24V
- Raymarine® E125 Widescreen, 12.1" Color LCD Radar/GPS/Chartplotter w/Integrated 4-kW HD Open Array Scanner - Primary Display
- Raymarine E125 Widescreen, 12.1" Color LCD GPS/Chartplotter - Auxiliary Display
- VHF Radio w/Remote Speaker & 8' Fiberglass Antenna
- FLIR Camera

Engine Room:

- Cummins QSM-11 715 hp twin engines
- Bilge Pumps, 24V Automatic (2)
- Bilge Pumps, 24V Automatic High Water (1 Bilge, 1 Cabin)
- Blowers, 24V Bilge (2)
- Engine Drip Sumps
- Exhaust w/Lift System Mufflers
- Fire Suppression System - Automatic w/Diesel Shutdown, Override & Manual Pull
- Gel-Coated Engine Room
- Insulation, Engine Room - 2" w/Loaded Vinyl Barrier
- Ladder, Stainless Steel - Removable
- Lighting, 24V
- Oil Changer System - Engines & Generator

Fuel System:

- Diesel Fuel System - Electric w/Transfer Pump
- Fuel Filters, (3) Racor® - (2) 75-900MAX (Dual) for Engines, (1) 500MAX for Generator
- Fuel Lines, USCG - Type A-1
- Fuel Tanks, Aluminum w/Manual Shutoff Valves

Generator:

- 21.5 kW Onan® Diesel (240V/60 Cycle) w/Sound Shield, Remote Start, Muffler, Closed Cooling, Fuel Filter, Seacock & Seawater Strainer

Underwater Gear:

- Trim Tabs, Hydraulic

- Zeus Drives: Joystick control w/"Sky Hook" - Propellers, Stainless Steel - Trim Tabs, Hydraulic (Integrated w/Zeus Pod Drives)

Waste System:

- Central Drain System
- Head System (VacuFlush®) - Electric
- Holding Tank Level Indicators - MDP & Heads
- Holding Tank w/Dockside Pump-Out (68 Gallon)
- Sump Box w/Automatic Pump & Hinged Service Lid

Water System:

- Freshwater Washdown Spigots w/Hoses - Transom, Engine Room & Anchor Locker
- Pressure Water System w/24V Pump & Charcoal Filtration System
- Shower, Cockpit - Single-Lever Hot & Cold w/Stainless-Steel Door, Braided Hose & Ergonomic Shower Wand
- Water Heater, 240V (20 Gallon)
- Water Inlet, Dockside
- Water Manifold System

Исключения

При продаже яхты исключаются личные вещи владельца.

Отказ от ответственности

Компания предоставляет описание судна или яхты добросовестно, но не может гарантировать точность этой информации, а также не ручается за техническое состояние. Покупатель должен проинструктировать своих агентов или оценщиков исследовать представленную информацию более подробно, по собственному желанию. Продажа судна или яхты, изменение цены или снятие с продажи будет происходить без предварительного уведомления.

ФОТОГРАФИИ

Profile



Bow Profile



Bow



Front Profile



bow



Cockpit



Cockpit



Cockpit



Cockpit



Cockpit



Сockpit



Сockpit



Helm



Helm



Helm



Salon



Salon



Salon



Galley



Galley



Galley



Laundry



Master Stateroom



Master Stateroom



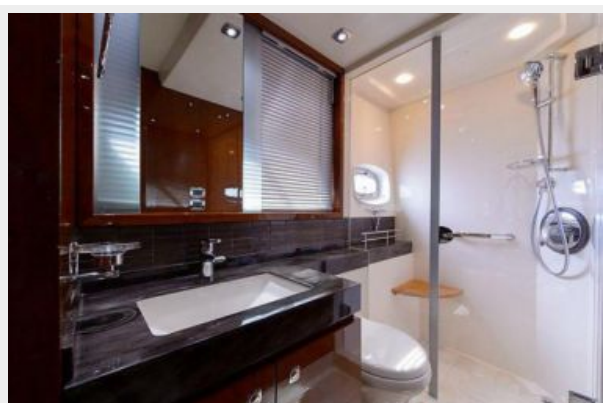
Master Stateroom



Master Head



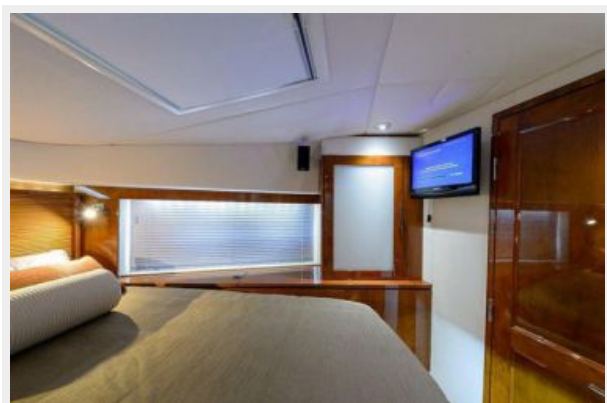
Master Head



Forward Stateroom



Forward Stateroom



Forward Head



Forward Head



Port Walkway



Starboard Walkway



Swim Platform



Engine Room



Engine Room



Engine Room



Engine Room



Engine Room



Engine Room



Engine Room Access



Stern Profile



Running



Running



Profile



Running



КОНТАКТЫ

Андрей Шестаков (Andrey Shestakov) – ведущий яхтенный брокер отдела продаж яхт и судов компании Shestakov Yacht Sales Inc. Официальный представитель Shestakov Yacht Sales Inc. для русскоговорящих клиентов в центральном офисе компании в Майами/Форт Лодердейл/Флорида/США.

Контактная информация

Email: andrey@shestakovyachtsales.com

Web: shestakovyachtsales.com

Телефоны

Краснодарский край: **+7(918)465-66-44**

США, Майами, Флорида: **+1(954)274-4435**

Время работы

Понедельник – Суббота: **9:00 - 21:00**
EDT

Воскресенье: **Закрито**

Адрес



Harbour Towne Marina, 850 NE 3rd St,
STE 213, Dania, FL 33004