

## OFF ISLAND — PACIFIC MARINER



**Судостроитель:** PACIFIC MARINER

**Год постройки:** 2005

**Модель:** Моторная яхта

**Цена:** ЦЕНА ЯХТЫ ПО ЗАПРОСУ

**Местонахождение:** United States

**Длина общая:** 65' 0" (19.81m)

**Ширина:** 17' 3" (5.26m)

**Макс. осадка:** 5' 0" (1.52m)

**Крейс. скорость:** 22 Kts. (25 MPH)

**Макс. скорость:** 25 Kts. (29 MPH)

Купить **OFF ISLAND — PACIFIC MARINER** а также выбрать подходящую вам яхту из нашего каталога яхт вам поможет опытный яхтенный брокер Андрей Шестаков. На сегодняшний день компания **Shestakov Yacht Sales Inc.** имеет большое количество яхт в собственном списке продаж, а также тесно сотрудничает со всеми крупными яхтенными производителями по всему миру.

Для того чтобы купить яхту **OFF ISLAND — PACIFIC MARINER** а также проконсультироваться по любому вопросу связанному с покупкой, продажей, чартером яхт позвоните по телефону **+7(918)465-66-44**.

# ОГЛАВЛЕНИЕ

ОГЛАВЛЕНИЕ	2
ХАРАКТЕРИСТИКИ	5
Обзор	5
Основная информация	5
Размеры	5
Скорость, вместимость и масса	5
Размещение	5
Корпус и палуба	6
Информация о двигателе	6
ПОДРОБНОЕ ОПИСАНИЕ	7
ACCOMMODATIONS	7
FEATURES & UPGRADES	7
VESSEL WALKTHROUGH	7
AFT DECK	8
SALON	8
GALLEY	9
PILOTHOUSE	10
MASTER STATEROOM	11
MASTER HEAD	11
VIP STATEROOM	12
VIP HEAD	12
GUEST STATEROOM	12
DAY / GUEST HEAD	13
CREW QUARTERS	13
LAUNDRY	13
FORE DECK	14
ELECTRICAL EQUIPMENT	14
FLYBRIDGE	15

SYSTEMS	16
SOUND PACKAGE	17
CANVAS PACKAGE	17
MECHANICAL EQUIPMENT	17
SWIM PLATFORM	18
REMARKS	18
EXCLUSIONS	18
Исключения	18
Отказ от ответственности	18
ФОТОГРАФИИ	20
Aft Deck	20
Aft Deck	20
Salon / Looking Aft	20
Salon / Looking Aft	20
Salon / Looking Forward	20
Salon / TV Door Raised	20
Salon / Galley	21
Salon / Dining Table in Dining Position	21
Galley	21
Galley / Dinette	21
Dinette	21
Pilothouse	21
Pilothouse	22
Master Stateroom	22
Master Stateroom	22
Master Stateroom	22
Master Stateroom	22
Master Head	22
Master Stateroom	23

---

VIP Stateroom	23
VIP Head	23
Guest Stateroom	23
Guest Head	23
Crew Aft	23
Flybridge	24
Flybridge / Helm	24
Flybridge	24
Flybridge	24
Sun Pad	25
Walk-Around Deck	25
Other View	25
Engine Room	25
Engine Room	25
Engine Room	25
КОНТАКТЫ	26
Контактная информация	26
Телефоны	26
Время работы	26
Адрес	26

# ХАРАКТЕРИСТИКИ

## Обзор

"Off Island" features three owner/guest staterooms, each with en-suite baths. The crew quarters are aft with a queen berth and head. **"One Owner vessel with full-time crew since new"**.

## Основная информация

Тип судна: Моторная яхта	Модельный год: 2006
Год постройки: 2005	Страна: United States
Верх: Hardtop	Открытая палуба мостика: Да

## Размеры

Длина общая: 65' 0" (19.81m)	Ширина: 17' 3" (5.26m)
Макс. осадка: 5' 0" (1.52m)	

## Скорость, вместимость и масса

Крейс. скорость: 22 Kts. (25 MPH)	Макс. скорость: 25 Kts. (29 MPH)
Вместимость воды: 285 Gallons	Вместимость сточного бака: 125 Gallons
Объем топливного бака: 1100 Gallons	

## Размещение

Всего кают: 3	Всего ком. состава: 3
Каюты экипажа: 1	Койки экипажа: 2
Комм. состав экипажа: 1	

## Корпус и палуба

---

**Материал корпуса:** Fiberglass

**Комплектация корпуса:** Semi-Displacement

## Информация о двигателе

---

**Двигатели:** 2

**Производитель:** MTU

**Модель:** Series 60

**Тип двигателя:** Inboard

**Тип топлива:** Diesel

---

# ПОДРОБНОЕ ОПИСАНИЕ

---

## ACCOMMODATIONS

---

PRELIMINARY SPECIFICATIONS “*One owner vessel with full-time crew since new*”. “*Off Island*” features three owner/guest staterooms, each with en-suite baths. The crew quarters are aft with a queen berth and head.

## FEATURES & UPGRADES

---

- Stern Thruster
- Naiad Stabilized Multisea II 4.5 sq.ft. fin
- Naiad Bow Thruster – Hydraulic 25hpNaiad Stabilizers checked & serviced (April 2014)
- Nibral 5-blade props “S” Class
- MTV Series 60
- New A/C Chiller
- New A/C Raw water pump
- New A/C Freshwater circulating pump
- New Ship’s freshwater pump
- Professionally maintained constantly
- Same Hull designer as Westport 130 & 164
- King-size Master Stateroom bed
- New 43” Samsung TV in salon (April 2014)
- New (2) Headhunter freshwater pumps (Feb. 2014)
- Bottom Painted (December 2013)
- HVAC – replace chiller + all pumps (July 2014)
- New microwave in galley (January 2014)
- New trash disposal in galley (Sept. 2014)
- Fire system inspected (April 2014)

## VESSEL WALKTHROUGH

---

Boarding the vessel from the aft deck you enter the salon from stainless steel framed sliding glass doors.

The salon on “Off Island” is both comfortable and elegant with beautiful satin finished Cherry interior woodwork throughout. To port is an L-shaped sofa with drawers below, and is complimented with a custom high-gloss electric base coffee/dining table. To starboard are two occasional chairs and forward is the built-in entertainment center with wet bar.

Going up four steps to the pilothouse level is the extremely spacious galley to port and a

staircase leading up to the flybridge. To starboard is the custom buffet cabinetry for dish and serving ware storage.

Forward of the galley is the comfortable forward facing L-shaped dining settee along with complete pilothouse lower helm station. There are port and starboard sliding doors for quick access to the walk-around side decks and two full-size Stidd helm chairs.

Forward to starboard is a wide semi-spiral staircase to the owner and guest accommodations. At the base of the steps is the combination day head/guest head. Moving forward in the forepeak is the VIP stateroom featuring a centerline queen bed and en-suite bath to starboard.

Moving back aft to port is the twin berth guest stateroom with private entrance to head.

All the way aft is the master stateroom with centerline king bed, en-suite bath, two large hanging lockers, a wall of drawers to port, and desk/storage area to starboard.

---

## AFT DECK

---

The 65' Pacific Mariner has the most versatile and usable aft deck of any yacht in her size range. Through the port aft gate you easily step on to the large fiberglass swim platform with safety hoop railing and spacious Lazarette storage. From the starboard end of the aft deck settee, you enter down a staircase to the crew's quarters, laundry center and engine room.

- Upholstered settee
- Custom gloss aft deck table and teak chairs
- Stainless steel glass door to salon
- Stereo speakers connected to main system
- Access to laundry, crew quarters and engine room
- Full canvas enclosure with Strataglass panels
- Stainless steel handrail with gate
- Fender locker
- Ladder to Flybridge
- Docking windlasses
- Glendenning shore power cords port and starboard
- CATV and phone inlet with cord
- LCD courtesy lighting
- Xenon overhead lighting
- Fresh water wash-down
- Dockside water inlet with pressure valve
- Boat hook on stainless brackets

---

## SALON

---

- Sofa with large drawers underneath
- Custom table adjusts electrically from coffee to dinner height, Camphor veneer w/high gloss finish
- Custom chairs



- Stainless steel framed sliding door to aft deck with retractable bug screen
- Home theater system: 42" Plasma HD TV
- Audio video control receiver with 120 watts per channel
- Surround sound speaker system with sub-woofer
- DVD player
- Sony DSS receiver
- VCR – Super VHS hi-resolution
- KVH Tracvision G4 satellite TV antenna
- Niles integrated remote control
- Speakers on aft deck, pilothouse and flybridge
- Sapele Pommele window mullions

#### WET BAR:

- Refrigerator
- Icemaker
- Stainless steel sink
- Custom crystal cabinet
- Bottle storage drawer
- Telephone
- Dimmer for overhead lighting
- Digital room temperature control
- AC distribution panel
- Generator control panels
- Inverter control panel

## GALLEY

- Fully-equipped gourmet galley
- Dacor stainless range with convection oven
- Kitchen Aid Side-by-Side stainless steel 22 cu. ft. refrigerator with ice and water
- Kitchen Aid stainless dishwasher
- GE stainless microwave oven
- Kitchen Aid stainless trash compactor
- Stainless steel double sink
- Insinkerator disposal
- Grohe single lever faucet with pull-out sprayer
- On-demand hot water
- Teak & Holly flooring
- Custom buffet for dish storage
- Lazy Susan with pull-out shelves
- Granite countertop
- Ventilation hatch with built-in roll-up screen

- Digital room temperature control
- Gourmet Package:
- China – 8 place setting
- Crystal – wine, champagne, highball and old fashioned
- Flatware - stainless
- Stainless pots and pans
- Utensils
- Carving set

---

## PILOTHOUSE

---

- MTU Engine instruments
- MTU Electronic controls
- MTU Back-up controls
- Glass Bridge Pilothouse electronics package:
- Furuno Black Box Navnet Radar/Plotter/Sounder
- Furuno 1942 6 kW 64 nm radar
- Furuno 582L color depth sounder
- Chart Plotter Pentium IV CPU with flat screen monitor, wireless mouse and keyboard
- Nobeltec Visual Navigation Suite
- ICOM M602 VHF radio
- Furuno GP37 GPS with WAAS & Differential
- Simrad AP20 autopilot
- Autopilot remote
- Simrad digital depth, speed and wind displays
- KVH Gyrotrac Compass
- Naiad® Multisea II Stabilizer controls
- Naiad® Bow thruster control
- Magnetic compass swung at shipyard
- ACR spotlight
- Oregon Scientific weather meter
- Communications system
- KVH Trac 50 satellite phone
- Panasonic PBX phone system with 5 stations
- Cell phone
- Cell/satellite/land modem
- Holding tank level indicator
- 12V power outlet
- Power assisted hydraulic steering
- Wood rimmed stainless steering wheel
- Stidd helm and companion chairs
- Sliding doors port and starboard
- Retractable bug screens on doors

- Chart light with red lens
- 2-Chart drawers
- Large storage drawer
- Dimmer for overhead lights
- Stereo speakers connected to main system with volume control
- Heavy duty windshield wiper/washers with intermittent operation
- Windshield defog system
- Wood handrail on curved staircase

#### PILOTHOUSE DINING:

- Custom upholstered settee
- Custom Camphor dining table with leaf and high-gloss finish
- Large storage under settee
- Electric room heater
- Central vacuum outlet

## MASTER STATEROOM

---

- Padded silk wall coverings
- King size walk-around bed
- King size innerspring mattress
- 30" Flat screen TV with DVD connected to satellite system
- Simrad digital depth sounder
- Telephone
- (2) Telephone outlets
- (2) Cedar-lined, lighted hanging lockers with full-length mirror on doors
- Built-in drawers under berth
- Desk with bookshelves, storage drawers and chair
- Hidden air conditioning duct with muffler
- Dimmer for overhead lighting
- Electric room heater
- Dresser with 7 large drawers
- Swing-arm reading lights
- (4) Stainless portlights with screens
- Central vacuum outlet

## MASTER HEAD

---

- Marble sole
- Marble countertop with sink
- Grohe single lever faucet
- On-demand hot water

- Jet-type marine toilet
- Marble flooring
- Towel storage cabinet
- 5' bathtub with shower
- Pressure balanced shower valve
- Tempered glass shower door
- Mirrored vanity with storage
- 2 AC outlets, 1 inside vanity
- Powered ventilation
- Air conditioning outlet
- Stainless portlight with screen

---

## VIP STATEROOM

---

- Queen size bed
- Built-in drawers under berth
- Flat-screen TV and VCR/DVD connected to satellite system
- Stereo with CD player
- Cedar-lined, lighted hanging locker
- Swing arm reading lights
- Telephone
- Digital room temperature control
- Electric room heater
- Ventilation hatch with screen and privacy cover
- (2) Stainless portlights with screens

---

## VIP HEAD

---

- Sink with marble countertop
- Grohe single lever faucet
- On-demand hot water
- Jet-type marine toilet
- Sunken shower with safety glass door
- Pressure balanced shower valve
- Mirrored vanity with sink
- Power ventilation
- Air conditioning outlet
- Stainless portlight with screen
- Marble flooring

---

## GUEST STATEROOM

---

- Twin berths
- Flat-screen TV and VCR/DVD connected to satellite system
- Stereo with CD player
- Cedar-lined, lighted hanging locker
- Built-in drawers under berths
- Reading lights
- Digital room temperature control
- Stainless portlight with screen

## DAY / GUEST HEAD

---

- Marble Sole
- Entry from foyer or guest stateroom
- Sink with marble countertop
- On-demand hot water
- Grohe single lever faucet
- Jet-type marine toilet
- Shower with safety glass door
- Pressure balanced shower valve
- Mirrored vanity with storage
- Air conditioning outlet
- Powered ventilation
- Stainless portlight with screen
- Marble flooring
- AC outlet

## CREW QUARTERS

---

- (2) Extra-long berths
- Storage under berth
- Reading lights
- Telephone
- Pre-wired for TV hook-up
- Digital room temperature control
- Electric room heater
- Sink with faucet
- Holding tank level indicator
- 6 Cu. Ft. freezer
- Marine head with holding tank
- Storage cabinet for ships spare parts
- Access to engine room
- Stainless portlight with screen

## LAUNDRY

---

- Stacked washer/dryer
- Storage cabinets
- Stainless coat hooks
- Fluorescent lighting

## FORE DECK

---

- 3,000lb. Windlass
- 300' High test chain
- 75lb. CQR stainless steel anchor
- Stainless steel anchor mount
- Fender locker on fore deck
- Fresh and sea water wash-downs on fore deck
- Sun pad cushion with handrails
- Kahlenberg horn
- Windshield system tempered safety glass frameless flush design
- 316 stainless steel bow rail
- Port and starboard gates
- Stainless steel bow, spring and stern cleats with rub strakes
- Stainless chocks on aft cleats
- Full walk-around side decks
- Fuel fills port and starboard
- Water fills port and starboard
- Holding tank pump-out fitting
- 316 stainless steel handrails

## ELECTRICAL EQUIPMENT

---

- Northern Lights 20kW generator with PTO for thruster
- Northern Lights 16kW generator
- 3000 Watt Prosine Inverter
- Glendenning Cablemaster 2 each 50 Amp with 100' cord and handheld remote control
- 50 Amp Smart-Y shore power adapter
- 30 Amp inlet with 50' cable
- Voltage boosting 50 Amp transformer
- Isolation transformers 50 Amp and 30 Amp
- AC distribution panel with:
- Split buss system for flexible source choices
- Magnetic breakers
- Backlit labels
- Digital AC frequency, amp and voltmeters
- All receptacles, GFCI protected

- 24 VDC distribution panel with:
  - Magnetic breakers
  - Backlit labels
  - Digital Amp and voltmeters
- 12 VDC system with:
  - DC-DC converter
  - 12 VDC distribution panel
  - Backlit labels
  - Digital Amp and voltmeters
- Battery chargers, 12 and 24 VDC
- Heavy duty battery switches
- Battery paralleling switch
- 8D gel cell batteries for engine start and house system
- GRP 27 gel cell batteries for generators
- Bonding system
- 24 VDC lighting
- 24 VDC fluorescent engine room lighting
- 24 VDC navigation lights
- Navigation light indicator panel
- Bilge pump warning panel
- Bilge pumps – 9 with automatic/manual operation
- Telephone and CATV inlet with 50' cable
- Wiring, tinned copper with labels installed to ABYC standards

## FLYBRIDGE

---

- Fully-equipped control station
- MTU Engine instruments
- MTU Electronic controls
- Premium electronics package
- Furuno radar repeater
- Sunlight viewable plotter repeater
- Simrad autopilot remote
- ICOM M-402 VHF radio
- Rudder angle indicator
- Bow thruster control
- Multisea II stabilizer control
- Spotlight control
- Simrad depth and speed displays
- Magnetic compass swung at shipyard
- Windshield wiper and washer
- Refrigerator
- Stidd helm and companion seats
- Stainless steel steering wheel
- Hydraulic steering, power-assisted
- Custom curved windshield with tempered safety glass
- 1500lb. Nautical Structures hydraulic davit with power booming and rotation
- Upholstered lounge
- Fast-dry foam in all exterior cushions
- Storage under
- Corian table
- Handrails, stainless steel
- Antenna arch
- Tungsten Halogen floodlights
- LCD Courtesy lighting

- Speakers connected to main system with volume control
- Electric BBQ grill
- Hatch to ladder to aft deck
- Throw ring in stainless steel bracket

## SYSTEMS

---

- Air Conditioning/Heat
- Aqua Air 60,000 BTU chilled water air conditioning system with reverse cycle heat
- Quiet rotary compressor
- Soft start inverter system
- Zoned system with electronic thermostats
- Underwater discharge water outlet
- Inline silencers on ducts
- Condensate discharge system
- Water System
- Water pump 24 VDC 60 PSI
- 10 Gallon accumulator tank
- 285 Gallon 316L stainless steel water tank
- On-Demand hot water system
- Color coded piping system
- City water connection with pressure reducing valve
- Shut-off valves at each fixture
- Hot and cold outlet in engine room
- Fresh water wash-down on foredeck and aft deck
- Shower on aft deck
- Water heater, 30 gallons with engine coolant heat exchanger
- Watermaker
- Sea Recovery 800 GPD
- Fresh water flush
- UV Filter
- Oil/water separator
- Commercial pre-filter
- Plankton filter
- Head System
- Headhunter jet-type heads
- 125 USG FRP holding tank
- Head pump 24 VDC 60 PSI
- 10 Gallon accumulator tank
- Holding tank pump 24 VDC
- Deck pump-out with valve
- Central vacuum with power brush and tools



---

## SOUND PACKAGE

---

- High density foam cored engine beds
- Underwater engine exhaust with vectored cowls
- 2" Double density sound foam with barrier in engine room
- Insulation on engine mufflers and piping
- Sound barrier tiles in strategic locations
- 3M Thinsulate for acoustic and thermal insulation
- Improved generator sound shields
- Generators installed on secondary isolation mounts
- Separating mufflers on generators with underwater discharge
- Air conditioning water discharged underwater
- Silencers on air conditioning ducts
- All pumps and motors installed on secondary isolation mounts
- Isolation bulkhead between master and guest stateroom
- Sound absorbing pads under carpet

---

## CANVAS PACKAGE

---

- Pilothouse windshield cover
- Aft cockpit surround
- Flybridge settee cover
- Helm seat covers
- Galley hatch cover
- Flybridge dash cover

---

## MECHANICAL EQUIPMENT

---

- Twin electronically controlled 825hp MTU diesel engines
- Stainless steel exhaust elbows
- Dual Racor fuel filters for main engines
- Sea strainers for main engines
- Naiad® Stabilizers – 4.5 sq. ft. fins
- Naiad® Multisea II stabilizer controls
- Naiad 25hp hydraulic bow thruster
- Propellers – 5 blade Nibral "S" class
- Propeller shafts 2.5" 22 HS built to proprietary tolerances
- Dripless shaft seals with crossover plumbing
- Dripless seals for rudders
- Struts – heavy duty bronze with rubber cutlass bearings
- Power-assisted hydraulic steering
- Cast bronze rudders with stainless steel posts

- Generator sea strainers
- Racor fuel filters for generators
- Oil change system for engines and generators
- Delta-T engine room demisters with 24V fans
- Automatic/manual fire extinguisher system
- Seacocks on all underwater thru-hulls
- Fuel tanks Aluminum coated with Imron, 1100 USG

---

## SWIM PLATFORM

---

- 5' Boarding platform
- Large storage locker with (2) access hatches
- Stainless steel swim ladder
- 3 Pop-up stainless steel cleats
- Stainless steel handrail
- Hot and cold shower

---

## REMARKS

---

"Off Island" represents a great example of a clean, well-maintained 65 Pacific Mariner. She is well-maintained, certainly worth a look for anyone in the marketplace for this size vessel.

---

## EXCLUSIONS

---

Owner's & crew's personal belongings; the Tender is not included in the sale of this vessel. A detailed list of exclusions will be provided at the time of sale, upon written request. "Off Island" is a registered name and does not convey.

---

## Исключения

---

При продаже яхты исключаются личные вещи владельца.

---

## Отказ от ответственности

---

Компания предоставляет описание судна или яхты добросовестно, но не может гарантировать точность этой информации, а также не ручается за техническое состояние. Покупатель должен проинструктировать своих агентов или оценщиков исследовать представленную информацию более подробно, по собственному желанию.

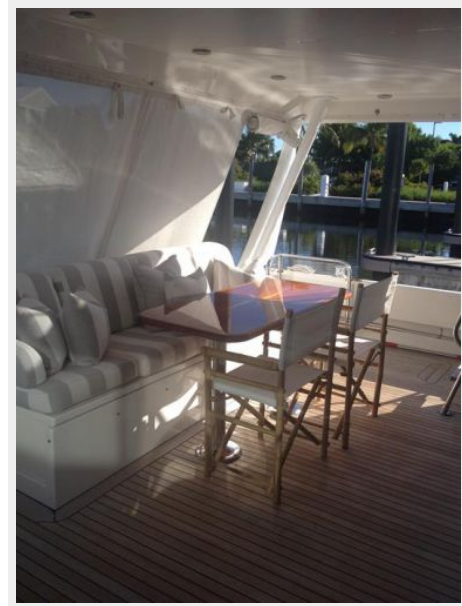
Продажа судна или яхты, изменение цены или снятие с продажи будет происходить без предварительного уведомления.

# ФОТОГРАФИИ

**Aft Deck**



**Aft Deck**



**Salon / Looking Aft**



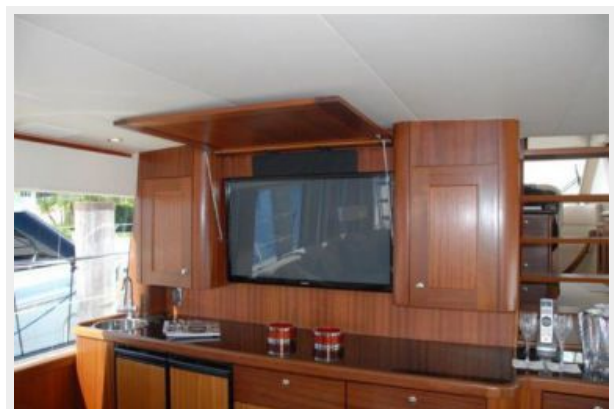
**Salon / Looking Aft**



**Salon / Looking Forward**



**Salon / TV Door Raised**



**Salon / Dining Table in Dining Position**



**Salon / Galley**



**Galley**



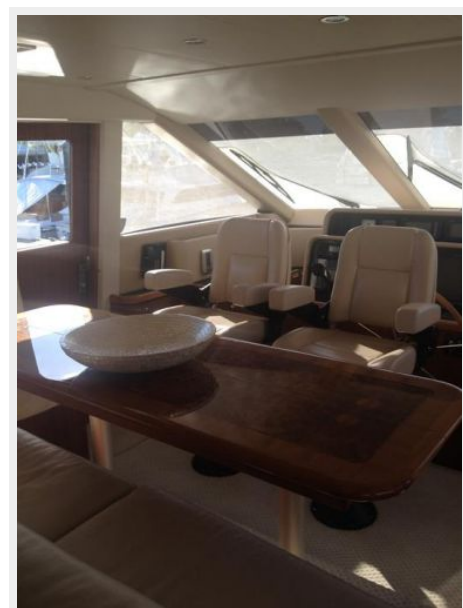
**Galley / Dinette**



**Dinette**



**Pilothouse**



**Pilothouse**



**Master Stateroom**



**Master Stateroom**



**Master Stateroom**



**Master Stateroom**



**Master Head**



**Master Stateroom**



**VIP Stateroom**



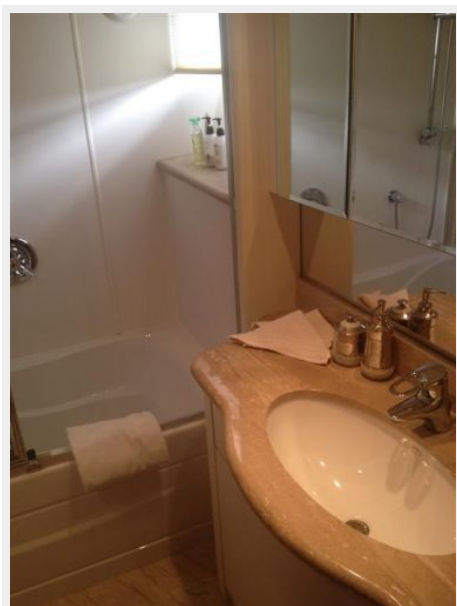
**VIP Head**



**Guest Stateroom**



**Guest Head**



**Crew Aft**



**Flybridge**



**Flybridge / Helm**



**Flybridge**

**Flybridge**





**Sun Pad**



**Walk-Around Deck**



**Other View**



**Engine Room**



**Engine Room**



**Engine Room**



# КОНТАКТЫ

---

Андрей Шестаков (Andrey Shestakov) – ведущий яхтенный брокер отдела продаж яхт и судов компании Shestakov Yacht Sales Inc. Официальный представитель Shestakov Yacht Sales Inc. для русскоговорящих клиентов в центральном офисе компании в Майами/Форт Лодердейл/Флорида/США.

## Контактная информация

---

Email: [andrey@shestakovyachtsales.com](mailto:andrey@shestakovyachtsales.com)

Web: [shestakovyachtsales.com](http://shestakovyachtsales.com)

## Телефоны

---

Краснодарский край: **+7(918)465-66-44**

США, Майами, Флорида: **+1(954)274-4435**

## Время работы

---

Понедельник – Суббота: **9:00 - 21:00**  
EDT

Воскресенье: **Закрето**

## Адрес

---



Harbour Towne Marina, 850 NE 3rd St,  
STE 213, Dania, FL 33004