

DEO VOLENTE — TIARA



Builder: TIARA

Year Built: 2013

Model: Cruiser

Price: PRICE ON APPLICATION

Location: United States

LOA: 45' 0" (13.72m)

Beam: 14' 9" (4.50m)

Max Draft: 3' 7" (1.09m)

Cruise Speed: 28 Kts. (32 MPH)

Max Speed: 33 Kts. (38 MPH)

Our experienced yacht broker, Andrey Shestakov, will help you choose and buy a yacht that best suits your needs **Deo Volente — TIARA** from our catalogue. Presently, at Shestakov Yacht Sales Inc., we have a wide variety of yachts available on our sale's list. We also work in close contact with all the big yacht manufacturers from all over the world.

If you would like to buy a yacht **Deo Volente — TIARA** or would like help answering any questions concerning purchasing, selling or chartering a yacht, please call **+1(954)274-4435**

TABLE OF CONTENTS

TABLE OF CONTENTS	2
SPECIFICATIONS	6
Overview	6
Basic Information	6
Dimensions	6
Speed, Capacities and Weight	6
Accommodations	6
Hull and Deck Information	6
Engine Information	7
DETAILED INFORMATION	8
Interior Group	8
Instrumentation/Equipment & Safety	8
Electronics	8
Engines	8
Hull & Deck	8
Factory Installed Options	9
Exclusions	9
Disclaimer	9
PHOTOS	11
Accommodation	11
Accommodation	11
Accommodation	11
Accommodation	11
Accommodation	11
Galley	11
Galley	12
Galley	12
Galley	12

Galley	12
Master Stateroom	13
Master Stateroom	13
Master Head	13
Master Head	13
Master Head	14
Guest Stateroom	14
Guest Head	14
Guest Stateroom	14
Guest Head	15
Guest Head	15
Guest Head	15
Entry Stairs	15
Distribution Panel	16
A/C Controls	16
Helm/Electronics	16
Helm/Electronics	16
Helm/Electronics	16
Electronics	16
Electronics	17
Engine Room	17
Engine Room	17
Engine Room	17
Engine Room	17
Engine Room	17
Engine Room	18
Engine Room	18
Engine Room	18
Engine Room	18

Engine Room	18
Engine Room	18
Engine Room	19
Engine Room	19
Engine Room	19
Engine Room	19
Engine Room	19
Engine Room	19
Deck	20
Engine Room	20
Sun Roof	20
Bow	20
Bow Storage	20
Sun Pad	20
Sun Pad	21
Sun Pad	21
Sun Pad	21
Cockpit Table	21
Cockpit Wet Bar	21
Cockpit Wet Bar	21
Cockpit Wet Bar	22
Cockpit	22
Cockpit Table	22
Cockpit	22
Cockpit Seating	23
Cockpit Seating	23
Cockpit Seating	23
Cockpit Steps	23
Cockpit Breaker Panel	23

Cockpit Breaker Panel	23
Profile	24
Swim Platform	24
Profile	24
Profile	24
Profile	24
Profile	24
Profile	25
Profile	25
Profile	25
Profile	25
CONTACTS	26
Contact details	26
Telephones	26
Office hours	26
Address	26

SPECIFICATIONS

Overview

This Like New 2013 Tiara 4500 Sovran Shows Extremely Well!!!!

Basic Information

Category: Cruiser

Sub Category: Sovran

Model Year: 2013

Year Built: 2013

Country: United States

Dimensions

LOA: 45' 0" (13.72m)

Beam: 14' 9" (4.50m)

Max Draft: 3' 7" (1.09m)

Speed, Capacities and Weight

Cruise Speed: 28 Kts. (32 MPH)

Max Speed: 33 Kts. (38 MPH)

Displacement: 26700 Pounds

Water Capacity: 120 Gallons

Fuel Capacity: 350 Gallons

Accommodations

Total Cabins: 2

Total Heads: 1

Hull and Deck Information

Hull Material: Fiberglass

Hull Color: Blue

Engine Information

Engines: 2

Manufacturer: Volvo

Model: IPS600 D6 DSL

Engine Type: Inboard

Fuel Type: Diesel

DETAILED INFORMATION

Interior Group

- Mold and mildew resistant headliner and hullside treatment
- Teak Interior
- Cable TV/Phone and 120V outlets throughout
- 12V lighting

Instrumentation/Equipment & Safety

- One (1) 240V AC 50 amp 65' dockside power cord w/ Glendinning cable recoiler and adapter for 30 amp service
- TV and AM/FM radio antennas
- Victron battery charger (1), 100 amp
- Raw water intake strainers on engines
- Oil changing system-main engines and generator
- Volvo Penta IPS Joystick Controller

Electronics

Full Garmin Electronics Package:

- **(2) 8212 12" Fully- Integrated Multi- function Display**
- **GSD HD Digital Sounder**
- **VHF 300 Black Box Marine Receiver**
- **4kW HD Radar with 4' Open Array**
- **GHP Marine Auto Pilot**

Engines

- Twin Volvo IPS 600 Diesels, 435HP

Hull & Deck

- Custom diamond pattern non-skid deck & cockpit surface
- Helm Wet Bar Refrigerator
- Three (3) composite forward deck hatches w/adjusters & built-in Ocean Air screens & privacy covers
- Molded-in fiberglass bow pulpit w/SS roller system

- One-piece welded, 316L S.S. bow rail w/pulpit, Tiara burgee and staff
- Custom composite windshield integrated into the standard hardtop w/tempered safety glass, safety handrails, power opening center section, and 3 washer/wipers
- Upper cockpit wet bar including sink w/cup holders, refrigerator & 120V outlet
- Portlight w/ privacy cover for aft stateroom
- Helm console & seat covers for all cockpit furniture
- Transom mounted trim tabs
- Molded-in hullside engine room ventilation
- Wood and foam core stringers, encapsulated by hand-laid fiberglass, are integrated into hull.
- Forward Deck Sun Pad w/ Chase Lounge Beige Vinyl

Factory Installed Options

Premiere Extended Protection in Place Until November 2018- Call Listing Broker for Details

- Upper Cockpit Cool Helm A/C 23K
- Macerator System for Waste System
- Electric Grill- Cockpit
- Transom Platform Seat
- Hull Color Imron Non-Metallic Paint
- Swim Platform Transom Lift
- Cockpit Carpet Upper Deck Sisal
- Interior Ultraleather (Cashew)
- Anti-Fouling Bottom Paint Awlgrip Awlstar
- Dinette L-Shaped w/Storage
- Upper Cockpit Table- Fiberglass
- Cabin Sole Solid Teak
- Cockpit Upholstery Piping Two Tone Beige
- Imron Custom Color Bootstripe (White)

Exclusions

Owner's personal belongings.

Disclaimer

The Company offers the details of this vessel or yacht in good faith but cannot guarantee or warrant the accuracy of this information nor warrant the condition of the vessel. A buyer should instruct his representatives, agents, or his surveyors, to investigate such details as the buyer desires validated. This vessel or yacht is offered subject to prior sale, price change, or withdrawal

without notice.

PHOTOS

Accommodation



Accommodation



Accommodation



Accommodation



Accommodation



Galley



Galley



Galley



Galley



Galley



Master Stateroom



Master Stateroom



Master Head

Master Head



Master Head



Guest Stateroom



Guest Head



Guest Stateroom



Guest Head



Guest Head



Guest Head



Entry Stairs



Distribution Panel



A/C Controls



Helm/Electronics



Helm/Electronics



Helm/Electronics



Electronics



Electronics



Engine Room



Engine Room



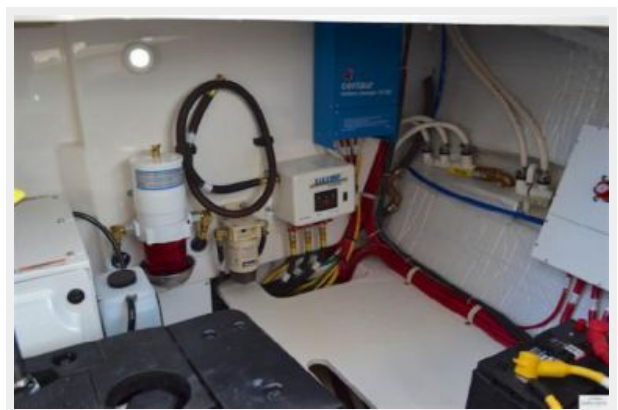
Engine Room



Engine Room



Engine Room



Engine Room



Engine Room



Engine Room



Engine Room



Engine Room



Engine Room



Engine Room



Engine Room



Engine Room

Engine Room



Engine Room



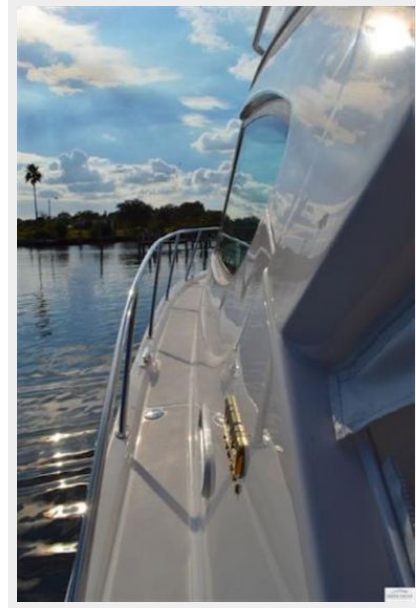
Engine Room



Engine Room



Deck



Sun Roof



Bow



Bow Storage



Sun Pad



Sun Pad



Sun Pad



Sun Pad



Cockpit Table



Cockpit Wet Bar



Cockpit Wet Bar



Cockpit Wet Bar



Cockpit



Cockpit



Cockpit Table



Cockpit Seating



Cockpit Seating



Cockpit Seating



Cockpit Steps



Cockpit Breaker Panel



Cockpit Breaker Panel



Swim Platform



Profile



Profile



Profile



Profile



Profile



Profile



Profile



Profile



Profile



CONTACTS

Andrey Shestakov, leading yacht broker of the sales department of Shestakov Yacht Sales Inc. Shestakov Yacht Sales Inc., the official representative of the Miami/Fort Lauderdale FL headquarters.

Contact details

Email: andrey@shestakovyachtsales.com

Web: shestakovyachtsales.com/en/

Telephones

USA: +1(954)274-4435

Office hours

Monday – Saturday: **9:00 - 21:00** EDT

Sunday: **closed**

Address



Harbour Towne Marina, 850 NE 3rd St,
STE 213, Dania, FL 33004