

L52 — LAGOON



Builder: LAGOON

Year Built: 2015

Model: Catamaran

Price: PRICE ON APPLICATION

Location: France

LOA: 52' 0" (15.85m)

Beam: 28' 3" (8.61m)

Max Draft: 4' 11" (1.50m)

Cruise Speed: 7 Kts. (8 MPH)

Max Speed: 9 Kts. (10 MPH)

Our experienced yacht broker, Andrey Shestakov, will help you choose and buy a yacht that best suits your needs **L52 — LAGOON** from our catalogue. Presently, at Shestakov Yacht Sales Inc., we have a wide variety of yachts available on our sale's list. We also work in close contact with all the big yacht manufacturers from all over the world.

If you would like to buy a yacht **L52 — LAGOON** or would like help answering any questions concerning purchasing, selling or chartering a yacht, please call **+1(954)274-4435**

TABLE OF CONTENTS

TABLE OF CONTENTS	2
SPECIFICATIONS	3
Overview	3
Basic Information	4
Dimensions	4
Speed, Capacities and Weight	4
Accommodations	4
Hull and Deck Information	5
Engine Information	5
PHOTOS	6
CONTACTS	9
Contact details	9
Telephones	9
Office hours	9
Address	9

SPECIFICATIONS

Overview

CHARTER (5 cabins, 5 heads), 2 x 75HP

Helm seat cushions

Storage unit in starboard cockpit furniture

220V electrical circuit, AC monitoring, 220/12V100A battery charger

Gel batteries 1260 Amp

Pair of s/steel davits & manual winch

Opening hatches + curtains on aft portholes of the aft cabins

Leather bulkhead organizers in the cabins

Fusion Radio USB player+loudspeakers in salon,cockpit,fly + B&G Sonic hub

Navigation Pack B&G 2015

MO 16T B&G display at helm station

Windlass remote control with chain counter at flybridge

Deck wash pump sea water / fresh water

Freshwater dock inlet

Indirect lighting in cabins and salon LAZY BAG WITH COVER NATURAL (Not with Canoe Boom)

3 ELECTRICAL WINCHES ON FLYBRIDGE IN LIEU OF STANDARD

AFT COCKPIT CUSHIONS CARBON BEIGE

EXTRA FOR 2 x 75 HP (Yanmar 4JH4TCE)

LAUNCHED, RIGGED, ANTIFOULING (4 dock lines, 8 fenders, diesel, anchor set) Bordeaux

Antifouling Seajet 039 platinum grey Primer epoxy ; Anchor set-up : 55kg Spade anchor, 100m chain D12

Basic Information

Category: Catamaran

Sub Category: Cruising Sailboat

Model Year: 2015

Year Built: 2015

Country: France

Vessel Top: Bimini Top

Fly Bridge: Yes

Cockpit: Yes

Dimensions

LOA: 52' 0" (15.85m)

Beam: 28' 3" (8.61m)

Max Draft: 4' 11" (1.50m)

Speed, Capacities and Weight

Cruise Speed: 7 Kts. (8 MPH)

Max Speed: 9 Kts. (10 MPH)

Displacement: 22.0462262 Pounds

Water Capacity: 253.60516992 Gallons

Fuel Capacity: 264.172052 Gallons

Accommodations

Total Cabins: 5

Total Berths: 10

Sleeps: 10

Total Heads: 5

Crew Cabin: 1

Crew Berths: 2

Crew Sleeps: 2

Crew Heads: 1

Hull and Deck Information

Hull Material: Fiberglass

Hull Configuration: Catamaran

Hull Color: WHITE

Hull Designer: VPLP

Exterior Designer: VPLP

Interior Designer: NAUTA DESIGN

Engine Information

Engines: 2

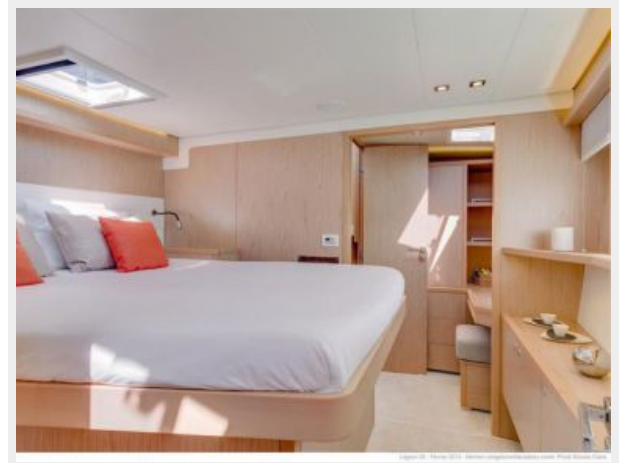
Manufacturer: Yanmar

Engine Type: Inboard

Fuel Type: Diesel

PHOTOS







CONTACTS

Andrey Shestakov, leading yacht broker of the sales department of Shestakov Yacht Sales Inc. Shestakov Yacht Sales Inc., the official representative of the Miami/Fort Lauderdale FL headquarters.

Contact details

Email: andrey@shestakovyachtsales.com

Web: shestakovyachtsales.com/en/

Telephones

USA: +1(954)274-4435

Office hours

Monday – Saturday: **9:00 - 21:00** EDT

Sunday: **closed**

Address



Harbour Towne Marina, 850 NE 3rd St,
STE 213, Dania, FL 33004