

KAZBAH — O'DAY



Builder: O'DAY

Year Built: 1984

Model: Cruising Sailboat

Price: PRICE ON APPLICATION

Location: United States

LOA: 34' 0" (10.36m)

Beam: 11' 3" (3.43m)

Max Draft: 5' 7" (1.70m)

Our experienced yacht broker, Andrey Shestakov, will help you choose and buy a yacht that best suits your needs **Kazbah — O'DAY** from our catalogue. Presently, at Shestakov Yacht Sales Inc., we have a wide variety of yachts available on our sale's list. We also work in close contact with all the big yacht manufacturers from all over the world.

If you would like to buy a yacht **Kazbah — O'DAY** or would like help answering any questions concerning purchasing, selling or chartering a yacht, please call **+1(954)274-4435**

TABLE OF CONTENTS

TABLE OF CONTENTS	2
SPECIFICATIONS	4
Overview	4
Basic Information	4
Dimensions	4
Speed, Capacities and Weight	4
Accommodations	4
Hull and Deck Information	5
Engine Information	5
DETAILED INFORMATION	6
Electronics	6
Sails & Rigging	6
Inside Equipment	6
Outside Equipment	6
Electrical Equipment	6
Covers	6
Equipment List	6
Disclaimer	7
Exclusions	7
Disclaimer	7
PHOTOS	8
At dock	8
Docked	8
Cockpit	8
Side deck	8
Instrumentation	8
Pedestal steering	8
New furler 2011	9

Deck	9
Galley	9
Salon	9
Settee	9
Head	9
Head	10
V-Berth	10
Electrical Panel	10
Raytheon Autopilot	10
Galley stove w/oven	10
Universal	10
Cockpit seating	11
Self tailing	11
Engine Instruments	11
Side deck	11
Drawings	11
Side deck	11
CONTACTS	12
Contact details	12
Telephones	12
Office hours	12
Address	12

SPECIFICATIONS

Overview

Kazbah is a one owner boat that has enjoyed a great life with her owner. She can now be enjoyed by you. A very sound and well maintained boat. She will provide many more years of enjoyment for her next owner.

Basic Information

Category: Cruising Sailboat

Model Year: 1984

Year Built: 1984

Country: United States

Dimensions

LOA: 34' 0" (10.36m)

LWL: 28' 9" (8.76m)

Beam: 11' 3" (3.43m)

Max Draft: 5' 7" (1.70m)

Speed, Capacities and Weight

Displacement: 11500 Pounds

Water Capacity: 25 Gallons

Fuel Capacity: 30 Gallons

Accommodations

Total Cabins: 2

Total Berths: 3

Sleeps: 4

Total Heads: 1

Hull and Deck Information

Hull Material: Fiberglass

Deck Material: Fiberglass

Hull Configuration: Fin & Spade

Hull Finish: Plastic

Engine Information

Engines: 1

Manufacturer: Universal

Engine Type: Inboard

Fuel Type: Diesel

DETAILED INFORMATION

Electronics

Autopilot - Raytheon 4000 Wheel Navigation center GPS Log-speedometer - Datamarine Radar -
Apelco Depthsounder - Datamarine Compass VHF - Standard Wind speed and direction -
Datamarine Radio - AM/FM/CD

Sails & Rigging

Sails Battened mainsail - Shore Good to Fair condition Genoa - 100% working Jib good
condition Furling genoa - 135 % Gennaker/Cruising spinnaker - With sock **Rigging** Steering
wheel

Inside Equipment

Battery charger Oven Manual bilge pump Marine head Electric bilge pump Hot water

Outside Equipment

Battery charger Oven Manual bilge pump Marine head Electric bilge pump Hot water

Electrical Equipment

Electrical circuit: 12V

Covers

Mainsail cover Bimini Top Lazyjacks Spray hood

Equipment List

Dodger with Bimini -2009

Harken Mk IV Unit 1 Jib Furler - 2009

Genoa 135% - 2000

Jib 100% new Luff tape and Sun shield - 2011

Main Shore Sails - 1996

Lazy Jacks and Main sheet - 2011

Bruce and Danforth Anchors

MOB Pole

CNG 2 Burner Stove with oven - 20 lbs CNG Bottle

Disclaimer

The Company offers the details of this vessel in good faith but cannot guarantee or warrant the accuracy of this information nor warrant the condition of the vessel. A buyer should instruct his agents, or his surveyors, to investigate such details as the buyer desires validated. This vessel is offered subject to prior sale, price change, or withdrawal without notice.

Exclusions

Owner's personal belongings.

Disclaimer

The Company offers the details of this vessel or yacht in good faith but cannot guarantee or warrant the accuracy of this information nor warrant the condition of the vessel. A buyer should instruct his representatives, agents, or his surveyors, to investigate such details as the buyer desires validated. This vessel or yacht is offered subject to prior sale, price change, or withdrawal without notice.

PHOTOS

At dock



Docked



Cockpit



Side deck



Instrumentation



Pedestal steering



New furler 2011



Deck



Galley



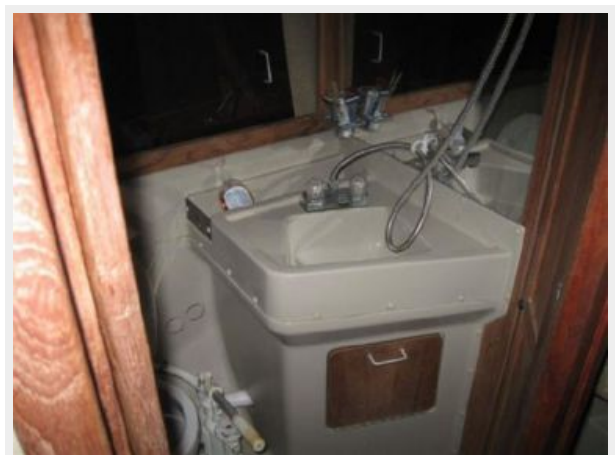
Salon



Settee



Head



Head



V-Berth



Electrical Panel



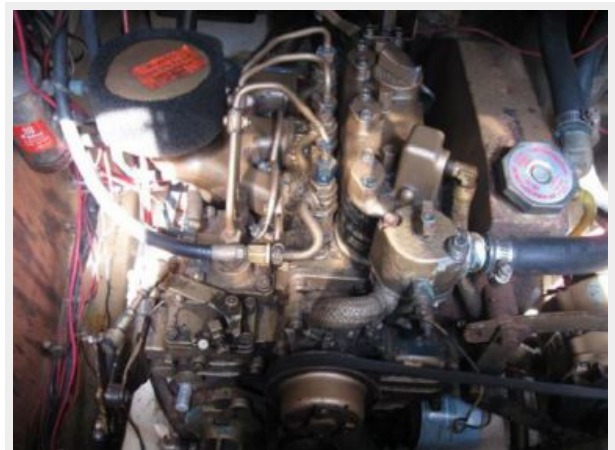
Raytheon Autopilot



Galley stove w/oven



Universal



Cockpit seating



Self tailing



Engine Instruments



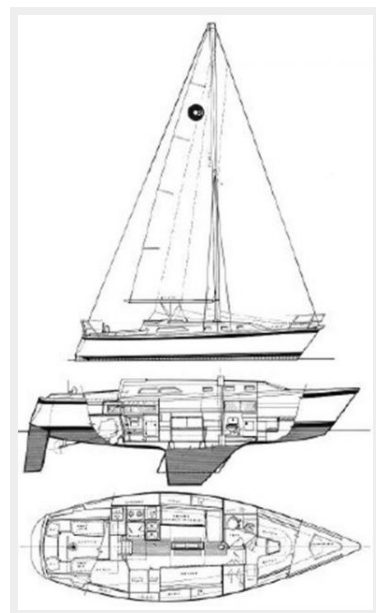
Side deck



Side deck



Drawings



CONTACTS

Andrey Shestakov, leading yacht broker of the sales department of Shestakov Yacht Sales Inc. Shestakov Yacht Sales Inc., the official representative of the Miami/Fort Lauderdale FL headquarters.

Contact details

Email: andrey@shestakovyachtsales.com

Web: shestakovyachtsales.com/en/

Telephones

USA: +1(954)274-4435

Office hours

Monday – Saturday: **9:00 - 21:00** EDT

Sunday: **closed**

Address



Harbour Towne Marina, 850 NE 3rd St,
STE 213, Dania, FL 33004