

## MAKO — SUNNY BRIGGS



**Builder:** SUNNY BRIGGS

**Year Built:** 2010

**Model:** Sport Fisherman

**Price:** PRICE ON APPLICATION

**Location:** United States

**LOA:** 56' 0" (17.07m)

**Beam:** 17' 6" (5.33m)

**Min Draft:** 4' 0" (1.22m)

**Cruise Speed:** 30 Kts. (35 MPH)

**Max Speed:** 37 Kts. (43 MPH)

Our experienced yacht broker, Andrey Shestakov, will help you choose and buy a yacht that best suits your needs **MAKO — SUNNY BRIGGS** from our catalogue. Presently, at Shestakov Yacht Sales Inc., we have a wide variety of yachts available on our sale's list. We also work in close contact with all the big yacht manufacturers from all over the world.

If you would like to buy a yacht **MAKO — SUNNY BRIGGS** or would like help answering any questions concerning purchasing, selling or chartering a yacht, please call **+1(954)274-4435**

# TABLE OF CONTENTS

---

TABLE OF CONTENTS	2
SPECIFICATIONS	4
Overview	4
Basic Information	4
Dimensions	4
Speed, Capacities and Weight	4
Accommodations	4
Hull and Deck Information	5
Engine Information	5
DETAILED INFORMATION	6
Accommodations and Layout	6
Salon	6
Galley	6
Master Stateroom	6
Head	7
Companionway Bunks (Port)	7
Bridge	7
Electronics and Navigation	7
Audio & Visual Equipment	8
Miscellaneous Deck and Hull	8
Electrical Equipment	9
Miscellaneous Mechanical	9
Engine & Equipment	10
Fishing Equipment	12
Safety	12
Salesman's Remarks	13
Exclusions	13
Exclusions	13

---

Disclaimer	13
PHOTOS	14
CONTACTS	22
Contact details	22
Telephones	22
Office hours	22
Address	22

---

# SPECIFICATIONS

---

## Overview

---

Mako is the third Sportfish built by legendary captain Allen De Silva with Briggs boat works in Wanchese, North Carolina. This 56 is undoubtedly the finest performing hulls produced by Sunny Briggs to date. The owner and builder focused on simplicity, ride and performance producing a modern, no frills, highly finished Carolina Custom. Performance: Her C-18 Caterpillar power provides 30 KT cruise at 1900, burning 70 GPH with Caterpillar Platinum warranty in place until 10- 2019. You will be impressed with the quality and fall in love with the unbeatable ride.

## Basic Information

---

**Category:** Sport Fisherman

**Model Year:** 2010

**Year Built:** 2010

**Country:** United States

## Dimensions

---

**LOA:** 56' 0" (17.07m)

**Beam:** 17' 6" (5.33m)

**Min Draft:** 4' 0" (1.22m)

## Speed, Capacities and Weight

---

**Cruise Speed:** 30 Kts. (35 MPH)

**Max Speed:** 37 Kts. (43 MPH)

**Displacement:** 55000 Pounds

**Water Capacity:** 250 Gallons

**Holding Tank:** 25 Gallons

**Fuel Capacity:** 3450 Gallons

## Accommodations

---

**Total Cabins:** 1

**Total Berths:** 3

**Sleeps:** 4

**Total Heads:** 1

---

## Hull and Deck Information

---

**Hull Material:** Composite

**Hull Finish:** Aluminum

---

## Engine Information

---

**Engines:** 2

**Manufacturer:** Caterpillar

**Model:** C-18

**Fuel Type:** Diesel

---

# DETAILED INFORMATION

---

---

## Accommodations and Layout

---

- Master forward with in-suite head
- Companionway bunks
- Tackle center to starboard
- Second full head is aft to port

---

## Salon

---

- Cherry interior with teak accents
- Settees Port and Starboard - Leather Lite, with storage
- Cabinet storage port and starboard
- Frameless windows with teak trim
- Center lined teak doors
- Berber carpet

---

## Galley

---

- Corian counters
- Cherry cabinets and teak accents
- Microwave G E
- Refrigeration G E
- Corina counters
- Grohe fixture
- Molded sink
- Amtico Sole
- Storage cabinet to port

---

## Master Stateroom

---

- Spacious Forward with ensuite head
- Center lined queen berth with storage
- Custom mattress
- Custom designer soft goods
- Drawer storage
- Hanging lockers cedar lined (2)
- Berber carpet

---

## Head

---

- Molded shower
- Glass shower door
- Vanity with mirror
- Corian top
- Molded sink
- Grone fixture
- Amtico Sole

---

## Companionway Bunks (Port)

---

- Bunks oversized (2)
- Privacy curtains
- Drawer storage
- Hanging locker - cedar lined

---

## Bridge

---

- Half Tower hardtop - Harbor Welding
- Electronics Box Actuated
- Teaser reel box
- Spreader Lights Quartz 110 V recessed
- Seating port and starboard with storage with cushions
- Brow storage
- Release helm chair Teak
- Console center lined
- Electronics boxes actuated
- Electronics box overhead actuated
- Teak Helm pod
- Steering wheel Release Stainless
- Shifters Release Stainless
- Enclosure 3 sided EZ2CY vented
- Spotlight ACR-RCL-100 REMOTE

---

## Electronics and Navigation

---

- GARMIN 5212 (2)
- GARMIN GPS MAP
- GARMIN 10 DIGITAL
- GARMIN DIGITAL RADAR

- FURUNO FCV-295 COLOR SOUNDER
- FURUNO GPS-WAAS NAVIAGATOR
- SIMRAD AP-24 AUTO PILOT
- ICOM M-504 (2) VHF

---

## Audio & Visual Equipment

---

- KVH TRAC VISION M3 GYRO
- SHARP 31" FLAT SCREEN (SALON)
- POLY PLANER RD-44 REMOTE (SALON)
- POLY PLANER MRD-70 AM-FM-CD (SALON)
- IPOD DOCKING STATION (SALON)
- SPEAKER (4) POLY PLANER (SALON)
- POLY PLANER RD-44 REMOTE (BRIDGE)
- SPEAKER (4) BRIDGE
- POLY PLANER RD-44 REMOTE (COCKPIT)
- SPEAKER (4) COCKPIT
- WAVE TALK WIFI ANTENNA
- SIRRIUS WEATHER

---

## Miscellaneous Deck and Hull

---

- Mezzanine seating port and starboard with teak sole
- Mezzanine storage port and starboard
- Port and starboard insulated storage boxes
- Eskimo ice dump starboard
- Drink box insulated
- Cockpit controls
- Bow rail
- Bo Mar escape hatch
- Teak Covering boards
- Molded hand rail gutter
- Bridge ladder Aluminum teak steps
- Anchor locker forward
- Fresh water outlet
- Fortress FX-85 Anchor
- Chain 3/8" EST 30 ‘
- Rode 600' Nylon 1/2 “
- Stainless steel deck hardware
- Fresh water wash down Bridge, anchor locker, engine room, cockpit
- Salt water wash down Cockpit



## 2014 Service

- Bottom paint
- Wheels reconditioned
- Cutlass bearings replaced

## Electrical Equipment

---

- 12-24 Volt System
- 110-240 Volt System
- Generator Northern Lights 12 KW

Model M843NW2-12KW

Serial # 8432-42390-C

- Fuel Filters Racor 5320 9P Dual
- Charger Shur power 24 to 12 Volt Battery Equalizer
- Charger Victron Automatic 24 to 60 Volt with Isolators
- Charger Interactor 110 V Automatic (Bow Thruster)
- Batteries Odyssey 34-PC-1500 (8)
- Batteries Odyssey 34 PC-1500 (2) Bow thruster
- Battery Boxes Blue Sea
- Bonding system central
- 50 AMP power cord
- Marinco Outlet 50 AMP

## Miscellaneous Mechanical

---

- Ice Machine Dometic- Eskimo E1600SC-D-230
- Fuel Transfer pump Oberdorfer 24 V (2)
- Oil Change pump Oil X Change 24 V
- Tank Indicator C Plex
- Trim Tabs Lenco 24 V
- Bow Thruster Vetus 24 V
- Compressor 12 Volt
- Cruise Air 16000 BTU's (3)
- Cruise Air Controls (3)
- Forward Bilge pump room
- Lectra San USCG 24 V FB
- Holding Tank macerator Raritan 24 V FB
- Sump Box pump 24 V FB
- Head pump Raritan

- 110-24 Volt lighting

## Engine & Equipment

---

### Engine 1

Brand: Caterpillar

Year Built: 2009

Engine Model: C-18

Engine Type: INBOARD

Engine/Fuel Type: Diesel

Location: Starboard

Engine Hours: 6450

Engine(s) Total Power:1000

Serial # CKH03118

### Engine 2

Brand: Caterpillar

Year Built: 2009

Engine Model: C-18

Engine Type: INBOARD

Engine/Fuel Type: Diesel

Location: Port

Engine Hours: 6450

Engine(s) Total Power: 1000

Serial # CKH03122

**GEAR:** Twin Disc Quick Shift

Model MGX5135A

Ratio 1.79:1

Serial # 5kb851 Starboard

Serial # 5KF580 Port

Controls Twin Disc quick shift

Stations (2) bridge – cockpit

- Caterpillar EMC's
- Emergency shut downs
- Emergency pumps (2) Engine synchronizer
- Marine Exhaust
- Custom under water exhaust
- Sound down exhaust sound dampener system
  
- Livos ventilation system
- Livos ventilation exhaust fans
  
- Steering Sea Star Hydraulic with power assist
  
- Shafts 2 ½ " Stainless
  
- Wheels Hy-Torque Nibral 5 blade
- Wheels Spare Hy-Torque Nibral 4 blade 20 X 40
- Seals Tide dripless with spares and cross overs
- Fuel Filters Racor Dual (2) model 75900
- Lighting 110 and 24 Volt
- Hot Water Heater Raritan stainless 20 gal.
- Camera Ray Marine- Garmin 5212
- Fresh water outlet

### PERFORMANCE:

RPM

SPEED

LOAD

GPH

1850	KTS 29	%68.	63
2000	KTS 32	%70.	68
2350	KTS 39	%95.	86

## 2014 Service

1000 hour service performed

1000 generator service performed

Caterpillar platinum warranty extended 2019

Cutlass bearings      Shaft seals

## Fishing Equipment

---

- Tackle center with work bench and freezer
- Rupp outriggers 3 X #18063
- Rupp center rigger (2)
- Release 130 fighting chair
- Release rocket launcher 4 rod holder tackle drawer
- Transom door
- Transom kill box
- Transom tuna tubes
- Fish Box in deck stainless refrigerated
- Live well
- Tackle storage

## Safety

---

- Life Raft 8 Man Viking
- 24 " Throw rings (2)
- Life Jackets (6) Type 1 offshore
- Spot Light ACR-RCL 100 remote
- IKAROS FLARES
- EPIRB ACR SATELITE 406 mounted on hardtop
- EPIRB OCEAN SIGNAL LB2E SATELITE Salon
- Fire suppression system Aersol MAG 4

- Kiddie hand held 5-B-C (2) Salon – Bridge
- Ansol Clean Guard 3-A:40 B:C (1) Galley

---

## Salesman's Remarks

---

Anyone in search of an amazing riding tournament sportfish boat built by one of the top builders in North Carolina, then Mako will exceed your expectations. The owner's change of plans has made this tremendous buying opportunity available and this boat is priced well below market to be the next Custom Carolina sold. This best buy will not last long Contact the listing broker direct for an appointment to see this special buying opportunity.

---

## Exclusions

---

Owner's personal Items, Art, Personal Fishing Tackle, Name

---

## Exclusions

---

Owner's personal belongings.

---

## Disclaimer

---

The Company offers the details of this vessel or yacht in good faith but cannot guarantee or warrant the accuracy of this information nor warrant the condition of the vessel. A buyer should instruct his representatives, agents, or his surveyors, to investigate such details as the buyer desires validated. This vessel or yacht is offered subject to prior sale, price change, or withdrawal without notice.

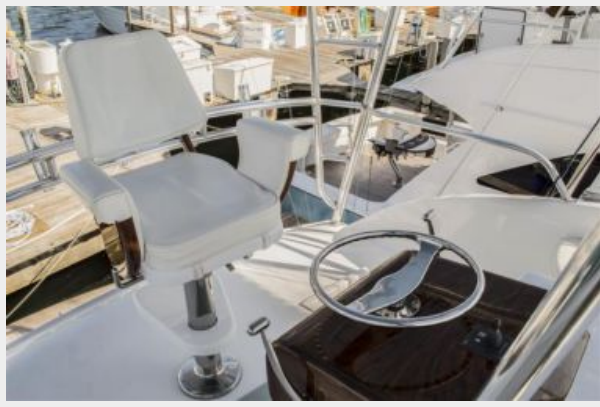
# PHOTOS



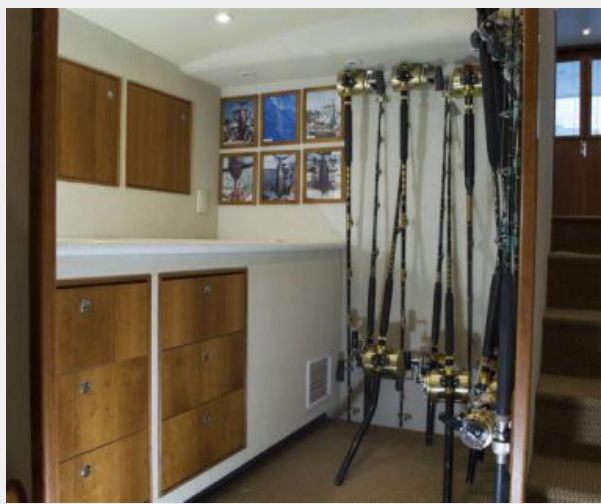
















# CONTACTS

---

Andrey Shestakov, leading yacht broker of the sales department of Shestakov Yacht Sales Inc. Shestakov Yacht Sales Inc., the official representative of the Miami/Fort Lauderdale FL headquarters.

## Contact details

---

Email: [andrey@shestakovyachtsales.com](mailto:andrey@shestakovyachtsales.com)

Web: [shestakovyachtsales.com/en/](http://shestakovyachtsales.com/en/)

## Telephones

---

USA: +1(954)274-4435

## Office hours

---

Monday – Saturday: **9:00 - 21:00** EDT

Sunday: **closed**

## Address

---



Harbour Towne Marina, 850 NE 3rd St,  
STE 213, Dania, FL 33004