

## LOON SONG — OCEAN ALEXANDER



**Судостроитель:** OCEAN ALEXANDER

**Год постройки:** 2006

**Модель:** Траулер

**Цена:** ЦЕНА ЯХТЫ ПО ЗАПРОСУ

**Местонахождение:** United States

**Длина общая:** 50' 0" (15.24m)

**Ширина:** 14' 8" (4.47m)

**Макс. осадка:** 4' 2" (1.27m)

**Крейс. скорость:** 9 Kts. (10 MPH)

**Макс. скорость:** 11 Kts. (13 MPH)

Купить Loon Song — OCEAN ALEXANDER а также выбрать подходящую вам яхту из нашего каталога яхт вам поможет опытный яхтенный брокер Андрей Шестаков. На сегодняшний день компания Shestakov Yacht Sales Inc. имеет большое количество яхт в собственном списке продаж, а также тесно сотрудничает со всеми крупными яхтенными производителями по всему миру.

Для того чтобы купить яхту Loon Song — OCEAN ALEXANDER а также проконсультироваться по любому вопросу связанному с покупкой, продажей, чартером яхт позвоните по телефону **+7(918)465-66-44**.

# ОГЛАВЛЕНИЕ

---

ОГЛАВЛЕНИЕ	2
ХАРАКТЕРИСТИКИ	3
Обзор	3
Основная информация	13
Размеры	13
Скорость, вместимость и масса	13
Размещение	13
Корпус и палуба	13
Информация о двигателе	13
ФОТОГРАФИИ	14
КОНТАКТЫ	22
Контактная информация	22
Телефоны	22
Время работы	22
Адрес	22

---

# ХАРАКТЕРИСТИКИ

---

## Обзор

---

Ocean Alexander 50 PH trawler in excellent condition. 2 staterooms, 2 heads and a well laid out PH with sleeper berth make this a must see boat. Owner had added many options that make this boat ready to cruise. Hydronic furnace, fully enclosed aft deck and flybridge, bow and stern thrusters, and a 40 HP Seasport dinghy. In 2011 a new salon L-shaped lounge was built and new seating in pilothouse was done in Ultraleather, along with matching foot stools in salon. Additional upgrades in 2012 included refinished teak and holly flooring in galley/pilothouse, new AGM start and house batteries coupled with a new Magnum 3000 watt inverter charger with digital display, 37 inch popup Samsung TV in salon, and an OA Stidd helm chair in the pilothouse.

Upgrades in 2013 include a NMEA 2000 network connecting monitors for the engine, an additional GPS, solid-state weather station, fresh water tank level monitors, computer interface, and two digital multipurpose displays. A Class B AIS system was installed, along with a second autopilot control on the flybridge. A PC-based computer navigation system with two large LCD displays was installed, with wifi connectivity from a wifi bridge connecting to a multi-input router. Finally new carpeting was installed throughout the boat, along with new curtains and bed covers. The aft deck and flybridge were fully enclosed with EZ2Ce panels, making these areas dry 'rooms'.

Fidalgo Slip available for Sale. Call for details

## HULL, SUPERSTRUCTURE AND DECKS

- Hand-laid, gelcoated fiberglass hull
- AL-600 core on superstructure and hull
- Solid fiberglass hull bottom
- Deck access hatch to chain locker
- White non-skid Fiberglass decks
- White vinyl rub rail S/S insert
- Windshield on FB, Lexan
- Black bottom paint, antifouling
- Black single boot top stripe
- Diamond Sea-Glaze doors for PH and Salon

- Fiberglass swim platform w/ swim ladder
- Stainless Steel window frames
- Tempered dark tinted window glass
- Screens on all opening windows and portlights; screen/shade for hatch
- Deck lights, 12V
- Fiberglass mast with radar platform
- Skylight hatch on fwd deck & P/H top
- Portuguese bridge with two lockers with settee/lockers under
- Carbon fiber reinforced structural stringers
- Fiberglass stairs from port side deck to Flybridge
- Cockpit hatch with ladder down to lazarette
- Transom door
- Side boarding gates at Stbd cockpit
- Magna Barbecue on boat deck

## **EXTERIOR HARDWARE AND FITTINGS**

- Stainless steel hardware
- 1-1/4" S/S handrails & stanchions
- S/S cleats & hawse holes
- S/S square portlights
- Horizontal windlass Maxwell HR2500 w/ fiberglass bow pulpit
- Emergency rudder tiller
- Zincs on rudder and shaft
- Flybridge helm seat (double wide)
- S/S handrails on back transom
- Fwd deck handrails with safety line

- Passive stabilizers on hull bottom
- S/S rudder
- Strut w/cutlass bearing
- High-efficiency, computer-designed & machined Bronze propeller with prop guard
- Bronze through hull fittings
- Teak steering wheel inside & S/S on FB
- Teak bow and stern staffs
- Windshield wipers & washers
- Remote operated lockable cockpit hatch
- Aft deck shower, dock side water (one unit) and TV phone inlet (one unit)
- 1-1/4" S/S handrails around top deck
- Fresh and sea water washdown in cockpit & foredeck
- Propeller shafts SUS 630 or equivalent
- Removable life line for aft flybridge railing
- Fuel fills from both side decks

## **CONTROL, NAVIGATION, AND ELECTRICAL SYSTEM**

- Maretron NMEA2000 monitoring network
  - WSO100 weather station
  - J2K100 electronic engine interface
  - USB100 computer USB interface
  - FSM100 freshwater tank level monitors (2)
  - DSM150 multipurpose display units (2)
  - AT10 interface with Furuno network
  - AT10 interface with Simrad network
  - Nodes in flybridge, pilothouse, engine room, lazarette, and top of electronics mast

- Furuno FA-50 AIS (class B) interfaced to computer system
- PC-based navigation system
  - Toshiba laptop with Toshiba docking station
  - 22" LCD displays - Pilothouse & Flybridge
  - Interface to AIS and NMEA 2000 network
  - Rose Point Systems Coastal Explorer 2011
  - Digital charts for PNW, BC, Alaska
- WiFi Network
  - Cradlepoint MRB1200B router
  - Ubiquiti Bullet M wifi bridge
  - Samsung SCX-3405F Wireless laser printer
- Furuno Navnet VX2 plotter and blackbox Radar
  - Chip with charts for Pacific Coast, including Alaska
  - ETR-6/10N blackbox network sounder
  - GP-320B GPS receiver
  - Furuno RD30 repeater on flybridge
- Standalone Uniden depth finder in PH
- Newmar battery voltage monitoring system
- Standalone Garmin GPS 492
- Simrad AP 25 Autopilot - Pilothouse & Flybridge
- ICOM M504 VHF radio, with RAM remote on flybridge
- Ritchie magnetic compass—Pilothouse & Flybridge
- Dual control stations-Pilothouse & Flybridge
- Electric engine control
- Murphy digital engine instrumentation system
- Hydraulic steering system

- Engine gauges to bevel panel in Pilothouse
- Heavy-duty Grover™ air horn
- Engine alarm system, audio oil, temperature and hour meter
- Heavy duty batteries (400amp-hour)
- Engine battery disconnect switch
- Battery paralleling system w/control switch
- Service battery switch
- Magnum 3000 W inverter/charger
- Polarity reverse indicating light
- AC outlets throughout
- 12V lights in all compartments
- AC/DC distribution panel with magnetic circuit breakers
- VOLT and AMP meters
- Bonding system throughout
- Shore power receptacle 1x50AMP 125/240 in two locations
- • 8 KW Onan generator with 480 Hours

## **ENGINE ROOM AND BILGE**

- Pressurized fresh and sea water system
- Fuel manifold distribution system
- One manual bilge pump
- Water heater, 20 gal. (electric and engine heat)
- Aluminum fuel tanks with sight gauges (4)
- S/S water tanks with sight gauges (2), with NMEA 2000 tank level monitors
- Color coded piping for fuel and water
- Common drainage system for sink, shower, bilge & exterior deck

- Five electric bilge pumps 12V auto & manual bilge switch, sumped when available
- Oil changing system for engine and genset
- 12V shower sump pump
- High water bilge alarm in engine room
- Lighted bilge
- Tankwatch 4 holding tank gauge
- Spare conduit running from engine room to Pilothouse, engine room to Flybridge, and engine room to Flybridge overhang (under)
- Dripless engine shaft seal log
- Dripless seal for rudder post
- 3 valves in steering system for autopilot
- Bronze sea cocks and raw water strainers on all intakes
- Quash™ and 3M™ sound insulation
- Racor fuel/water separator for engine & generator (dual units)
- Engine room vent blowers 2x12V
- Engines isolation switch
- Heron rubber floor on engine room walkway
- Two 110V fluorescent lights or wiring only for 220V/50HZ system
- 12V ceiling lights & anti-explosion type in engine room
- AC outlet
- Fresh water outlet with hose for engine & generator
- Heavy Duty Gulf Coast fuel polishing system
- Fiberglass exhaust pipes with mufflers
- Fireboy Automatic Halon 700CF fires suppression system
- Seacock ready for water maker



## ACCOMMODATIONS AND INTERIOR

- Teak paneling and cabinetry
- Soft vinyl headliners
- Solid S/S door locks
- Stainless steel hardware
- Flip up berth for storage underneath
- Carpet throughout (new 2013), except teak and holly flooring in Pilothouse, Heads, and Galley
- Satin varnish for interior finish
- Hanging lockers w/dual locking mechanism

## PILOTHOUSE

- Teak and Holly flooring
- Settee with storage under, new hi/lo table mechanism
- Steering control system
- Teak electronics mounting panel overhead
- Teak grab rail on ceiling
- Long-range pilot berth
- Lighted stairway to fore cabin
- 12V halogen lights
- Water tight sliding doors to side decks
- Teak valance board
- Teak top dinette table

## SALON

- 12V halogen lights
- Teak grab rail on ceiling

- Entertainment center and storage cabinet, at port side
- Hydraulic hi-low teak top table
- Watertight sliding door to cockpit
- Teak valance board

## **MASTER STATROOM**

- Queen size berth, w/ storage underneath
- 12V halogen lights
- Private head w/ sink and full height divided storage closet
- Cedar-lined hanging locker w/ auto lighting on port side
- Tube lights under bunk
- Stainless Steel square portlights

## **GUEST STATEROOM**

- Hi-low V-berth
- Drawers & storage under bunk
- Teak plank lines on hull sides
- Cedar lined hanging locker w/auto lighting
- Dressing mirror behind door

## **HEADS**

- Fiberglass molded counter top & sink
- Teak walls and cabinets
- Mirror like headliner
- Medicine / cabinet storage
- Grohe™ faucets for sink and shower
- Stall shower w/one piece glass door in master head
- “Wet-head shower” in guest head

- 12V light
- Portlight w/screen
- Tecma™ toilet system
- GFI (110V only) AC outlet
- Vent blower
- Teak and holly flooring

## **GALLEY**

- Formica off-white counter tops
- Teak panel and cabinetry
- Storage cabinets and drawers
- Franke™ Sink w/tap
- Tube light under
- Teak and holly flooring
- Serving shelf/dish locker
- Refrigerator
- Propane three burner cooktop w/ oven
- Overhead microwave convection oven with exhaust blower
- GFI (110V only) AC outlet
- Overhead dish locker fwd counter of galley
- Disposal

## **ADDITIONAL EQUIPMENT**

- Webasto Hydronic 3 zone Diesel furnace with flash hot water maker.
- Full height GE washer/dryer combo (240 VAC)
- Vetus electric bow thruster in bow, 9.6 HP, 24 VDC
- Sidepower electric bow thruster in stern, 24 VDC

- Tank tender for 6 tanks (4 fuel, 2 water)
- 2 hatches in salon for access to engine room
- Dual Racor fuel filters with Y-valves
- Lockers on the inside of Portuguese bridge for storage
- Wet head in guest head for shower usage
- 800 LBS electric davit on starboard side of boat deck
- 12 VDC battery charger for engine bank
- 24 VDC batter chargers for thrusters
- Wabastco Hydronic Diesel furnace
- 8KW Kohler Generator with 480 hours
- High Output heavy duty electrical alternator

## TENDER AND DAVIT

- 12' Seasport 360 with Yamaha 40hp 4 stroke

## Exclusions

“All personal property is excluded unless specifically identified and included in the sale agreement and listing specifications. Personal property refers to all items not permanently attached to the vessel including but not limited to: artwork, furnishings, and recreational or entertainment items. Advertisements, marketing materials, and/or other photography may depict the vessel with personal property, however, such personal property is excluded unless otherwise specifically included as provided herein.”

**Disclaimer** The Company offers the details of this vessel in good faith but cannot guarantee or warrant the accuracy of this information nor warrant the condition of the vessel. A buyer should instruct his agents, or his surveyors, to investigate such details as the buyer desires validated. This vessel is offered subject to prior sale, price change, or withdrawal without notice.

## Основная информация

Тип судна: Траулер

Модельный год: 2006

Год постройки: 2006

Страна: United States

## Размеры

Длина общая: 50' 0" (15.24m)

Длина по ватерлинии: 42' 3" (12.88m)

Ширина: 14' 8" (4.47m)

Макс. осадка: 4' 2" (1.27m)

## Скорость, вместимость и масса

Крейс. скорость: 9 Kts. (10 MPH)

Макс. скорость: 11 Kts. (13 MPH)

Водоизмещение: 42500 Pounds

Вместимость воды: 200 Gallons

Вместимость сточного бака: 60 Gallons

Объем топливного бака: 700 Gallons

## Размещение

Всего кают: 2

## Корпус и палуба

Материал корпуса: Fiberglass

## Информация о двигателе

Двигатели: 1

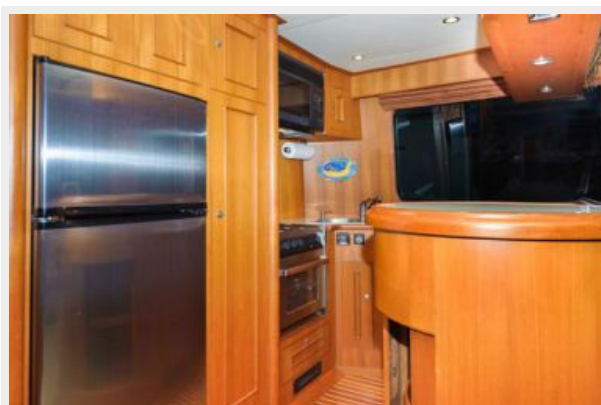
Производитель: John Deere

Модель: 6068SFM

Тип топлива: Diesel

# ФОТОГРАФИИ

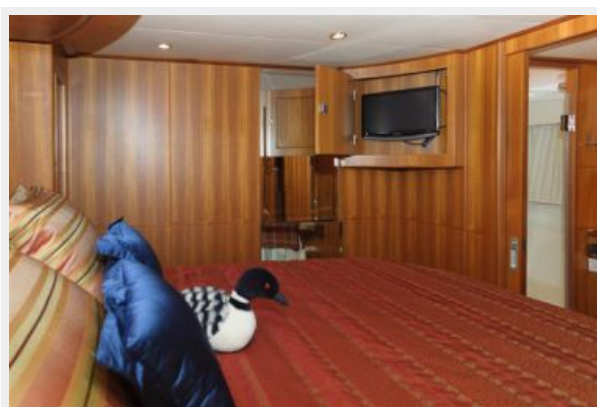






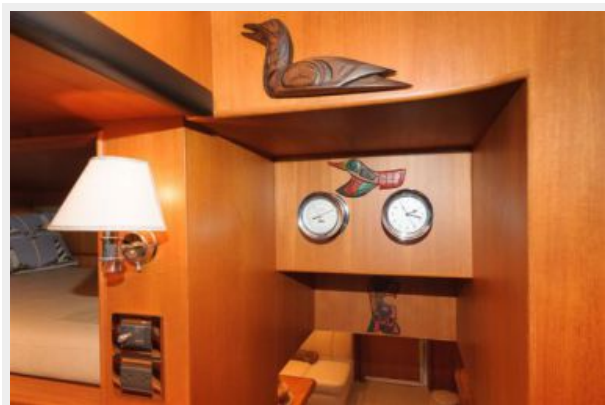
















# КОНТАКТЫ

---

Андрей Шестаков (Andrey Shestakov) – ведущий яхтенный брокер отдела продаж яхт и судов компании Shestakov Yacht Sales Inc. Официальный представитель Shestakov Yacht Sales Inc. для русскоговорящих клиентов в центральном офисе компании в Майами/Форт Лодердейл/Флорида/США.

## Контактная информация

---

Email: [andrey@shestakovyachtsales.com](mailto:andrey@shestakovyachtsales.com)

Web: [shestakovyachtsales.com](http://shestakovyachtsales.com)

## Телефоны

---

Краснодарский край: **+7(918)465-66-44**

США, Майами, Флорида: **+1(954)274-4435**

## Время работы

---

Понедельник – Суббота: **9:00 - 21:00**  
EDT

Воскресенье: **Закрито**

## Адрес

---



Harbour Towne Marina, 850 NE 3rd St,  
STE 213, Dania, FL 33004