

## NORTHWIND — LAZZARA



**Судостроитель:** LAZZARA

**Год постройки:** 1995

**Модель:** Мега-яхта

**Цена:** ЦЕНА ЯХТЫ ПО ЗАПРОСУ

**Местонахождение:** United States

**Длина общая:** 76' 0" (23.16m)

**Ширина:** 19' 1" (5.82m)

**Мин. осадка:** 4' 6" (1.37m)

**Крейс. скорость:** 20 Kts. (23 MPH)

**Макс. скорость:** 24 Kts. (28 MPH)

Купить **NORTHWIND — LAZZARA** а также выбрать подходящую вам яхту из нашего каталога яхт вам поможет опытный яхтенный брокер Андрей Шестаков. На сегодняшний день компания **Shestakov Yacht Sales Inc.** имеет большое количество яхт в собственном списке продаж, а также тесно сотрудничает со всеми крупными яхтенными производителями по всему миру.

Для того чтобы купить яхту **NORTHWIND — LAZZARA** а также проконсультироваться по любому вопросу связанному с покупкой, продажей, чартером яхт позвоните по телефону **+7(918)465-66-44**.

# ОГЛАВЛЕНИЕ

---

ОГЛАВЛЕНИЕ	2
ХАРАКТЕРИСТИКИ	3
Основная информация	3
Размеры	3
Скорость, вместимость и масса	3
Размещение	3
Корпус и палуба	3
Информация о двигателе	4
ПОДРОБНОЕ ОПИСАНИЕ	5
Accommodations	5
Исключения	6
Отказ от ответственности	6
ФОТОГРАФИИ	7
КОНТАКТЫ	21
Контактная информация	21
Телефоны	21
Время работы	21
Адрес	21

# ХАРАКТЕРИСТИКИ

## Основная информация

Тип судна: Мега-яхта	Модельный год: 1995
Год постройки: 1995	Год обновления: 2014
Вид обновления: Lazzara Factory Refit	Страна: United States
Верх: Hardtop	Открытая палуба мостика: Да

## Размеры

Длина общая: 76' 0" (23.16m)	Ширина: 19' 1" (5.82m)
Мин. осадка: 4' 6" (1.37m)	Длина привального бруса: 76' 0" (23.16m)

## Скорость, вместимость и масса

Крейс. скорость: 20 Kts. (23 MPH)	Макс. скорость: 24 Kts. (28 MPH)
Вместимость воды: 350 Gallons	Вместимость сточного бака: 100 Gallons
Объем топливного бака: 1700 Gallons	

## Размещение

Всего кают: 5	Всего коек: 7
Спальные места: 10	Всего ком. состава: 6
Каюта капитана: Да	Каюты экипажа: 1
Койки экипажа: 2	Спальных мест экипажа: 2
Комм. состав экипажа: 1	

## Корпус и палуба

Материал корпуса: Fiberglass	Материал палубы: Fiberglass
Комплектация корпуса: Monohull	Цвет корпуса: White
Отделка корпуса: Plastic	Дизайнер корпуса: Dick Lazzara

## Информация о двигателе

---

**Двигатели:** 2

**Производитель:** MTU

**Модель:** TE183

**Тип двигателя:** Inboard

**Тип топлива:** Diesel

## ПОДРОБНОЕ ОПИСАНИЕ

---

### Accommodations

---

#### Remarks

NORTHWIND just completed a complete Lazzara factory refit including interior, engine room, accommodations and more. She has been restored to near original condition. Prior to the refit NORTHWIND has been on a strict maintenance regimen including an annual Lazzara Sea Check and most recent in Feb 2014. The entire hull and black trim was painted in November of 2012 and has numerous upgrades including new I.S.I.S. 700C monitoring system.

#### Overall

From the enclosed aft deck you enter the spacious salon through a heavy stainless sliding glass door. Custom carpeting is throughout the salon and dining area and has spacious couch seating both port and starboard. The entertainment center, built-in china dinnerware hutch and leather overhead adds elegance to an already luxurious setting. Forward of the salon/dining area is the galley, dinette and pilothouse. Aft and below is the large master cabin with corner settee, his & hers desks, night stand and walk-in closet. The master head is tiled with black granite, his/hers sink and Jacuzzi tub/shower. 2 guest cabins aft; 1 queen and 1 twin bunk, each with en-suite heads. Descending stairs from P/H one enters an office space. Stacked washer/dryer (just replaced). Adjoining crews quarters are twin bunks with head and V-berth is arranged as captains quarters also with en-suite head. Large flybridge with hard top offers spacious U-shaped cushioned seating around a table. Owner has added 60" freezer on FB to support long range cruising.

#### Main Salon

From the aft deck you enter the salon through a large sliding glass door. To port is an L-shaped leather sofa with beautiful custom coffee table. To starboard is the entertainment center followed by another large leather sofa and recliner. Continuing forward there is a mini bar to starboard and custom wood dining table and chairs followed by storage counter and cupboards.

#### Galley

Forward of the salon is the huge U-shaped galley to port with granite counters, stainless steel appliances and hardwood flooring. To starboard is the very convenient on-deck day head. Moving forward of the galley is an L-shaped dinette to starboard and the lower helm wheelhouse is to port with helm bench seat. Wing doors to port and starboard give access to bow.

#### Master Stateroom

Aft of the foyer area is the large full beam master stateroom. It features a king size bed, two night stands, large settee to port, vanity to starboard, walk-in closet with a built-in safe for valuables and two large dressers. Richly appointed custom made fabrics adorn the bed. Forward is the huge master head with marble floors, twin sinks, linen closet and large shower with with double shower heads, his/her sinks accented with gold faucets and a full size Jacuzzi tub.

Port VIP Stateroom Queen guest berth is covered in custom designer fabrics that attractively flow with the other rooms. The hanging closet is cedar lined and there is ample storage beneath the bed as well as in the dresser. A built-in entertainment center will assure your guest relaxation and comfort. The en-suite head has a sink, toilet and shower stall. Starboard VIP Stateroom Bunk

berths are covered in custom designer fabrics that attractively flow with the other rooms. The hanging closet is cedar lined and there is ample storage beneath the bed as well as in the dresser. A built in entertainment center will assure your guest relaxation and comfort. The ensuite head has a sink, toilet and shower stall. Office

The study/office located in the crew area is forward and includes internet and faxing connections. Also, there is

Icom/ICM800 radio, HP printer and TV. Along with the chair for the desk there is a bench seat that provides additional storage beneath the cushions. Additionally in this area is one of the two washer/dryer sets, this being the new GE.

#### Forward Crew Stateroom

The forward crew stateroom has a raised double berth with storage beneath that can be used for professional crew or additional guests. The en-suite head has sink, toilet and shower stall.

#### Deck & Hull

Entire hull white paint was repainted approximately 1 year ago. Trim tabs, hydraulic recessed in hull, LSR shrouded rudder & stainless steel drive unit, passerelle, davit, teak decks aft and bow, flair kit, life jackets and rings, security system, mooring lines. Maxwell electric windless 300 ft. 3/8" chain with fortress anchor. Bow pulpit.

#### Fly Bridge

The Flybridge can be accessed via a stairway from the wheelhouse or a ladder from the aft deck and has a fully (EZ2CY) enclosure. The helm is centerline and features one bench and one captains chair. Aft to port is a large curved seating area with cushions and table. Aft and to starboard is more seating area followed by a wet bar with refrigerator, ice maker, sink, storage and a stainless steel electric grill.

#### Aft Deck

The aft deck includes a hard top with full enclosure, spacious seating with teak table and 6 chairs in addition to port and starboard bench seating and stair to teak swim platform.

#### Miscellaneous

- Spurs Cutters

## Исключения

---

При продаже яхты исключаются личные вещи владельца.

## Отказ от ответственности

---

Компания предоставляет описание судна или яхты добросовестно, но не может гарантировать точность этой информации, а также не ручается за техническое состояние. Покупатель должен проинструктировать своих агентов или оценщиков исследовать представленную информацию более подробно, по собственному желанию. Продажа судна или яхты, изменение цены или снятие с продажи будет происходить без предварительного уведомления.

## ФОТОГРАФИИ











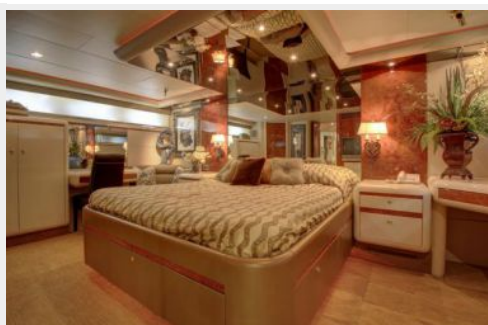
















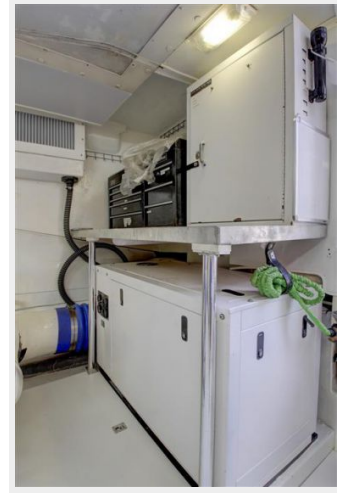














## КОНТАКТЫ

---

Андрей Шестаков (Andrey Shestakov) – ведущий яхтенный брокер отдела продаж яхт и судов компании Shestakov Yacht Sales Inc. Официальный представитель Shestakov Yacht Sales Inc. для русскоговорящих клиентов в центральном офисе компании в Майами/Форт Лодердейл/Флорида/США.

### Контактная информация

---

Email:  
**andrey@shestakovyachtsales.com**

Web: [shestakovyachtsales.com](http://shestakovyachtsales.com)

### Телефоны

---

Краснодарский край: **+7(918)465-66-44**

США, Майами, Флорида: **+1(954)274-4435**

### Время работы

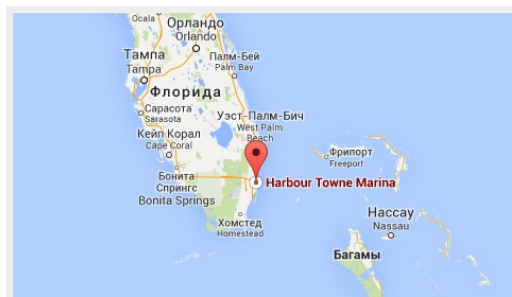
---

Понедельник – Суббота: **9:00 - 21:00**  
EDT

Воскресенье: **Закрыто**

### Адрес

---



Harbour Towne Marina, 850 NE 3rd St,  
STE 213, Dania, FL 33004