

SHANTOO — WEST BAY SONSHIP



Судостроитель: WEST BAY SONSHIP

Год постройки: 1995

Модель: Моторная яхта

Цена: **ЦЕНА ЯХТЫ ПО ЗАПРОСУ**

Местонахождение: Canada

Длина общая: 58' 0" (17.68m)

Ширина: 17' 1" (5.21m)

Макс. осадка: 5' 1" (1.55m)

Крейс. скорость: 17 Kts. (20 MPH)

Макс. скорость: 20 Kts. (23 MPH)

Купить Shantoo — WEST BAY SONSHIP а также выбрать подходящую вам яхту из нашего каталога яхт вам поможет опытный яхтенный брокер Андрей Шестаков. На сегодняшний день компания Shestakov Yacht Sales Inc. имеет большое количество яхт в собственном списке продаж, а также тесно сотрудничает со всеми крупными яхтенными производителями по всему миру.

Для того чтобы купить яхту Shantoo — WEST BAY SONSHIP а также проконсультироваться по любому вопросу связанному с покупкой, продажей, чартером яхт позвоните по телефону **+7(918)465-66-44**.

ОГЛАВЛЕНИЕ

ОГЛАВЛЕНИЕ	2
ХАРАКТЕРИСТИКИ	3
Обзор	3
Основная информация	3
Размеры	3
Скорость, вместимость и масса	3
Размещение	4
Корпус и палуба	4
Информация о двигателе	4
ПОДРОБНОЕ ОПИСАНИЕ	5
Specifications	5
Исключения	9
Отказ от ответственности	9
ФОТОГРАФИИ	10
КОНТАКТЫ	12
Контактная информация	12
Телефоны	12
Время работы	12
Адрес	12

ХАРАКТЕРИСТИКИ

Обзор

Asking Price: \$519,500 USD \$575,000 CAN

The West Bay SonShip 58' Pilothouse is a three stateroom flybridge Pilothouse Motor Yacht with wide beam, spacious salon, galley up, walk around side decks and large aft cockpit. It has twin 550 hp Detroit Diesels with 2600 hours, Wesmar stabilizers and additional cockpit Mathers engine and thruster controls that enhance cruising, maneuverability and docking. Flat screen TVs are in the entertainment center and staterooms.

"Shantoo" has been boat house kept and meticulously maintained since new at Reed Point Marina. Tri-shore yacht services has professionally maintained "Shantoo" since launching.

Основная информация

Тип судна: Моторная яхта

Модельный год: 1995

Год постройки: 1995

Страна: Canada

Размеры

Длина общая: 58' 0" (17.68m)

Длина палубы: 59' 6" (18.14m)

Ширина: 17' 1" (5.21m)

Макс. осадка: 5' 1" (1.55m)

Длина привального бруса: 63' 6"
(19.35m)

Скорость, вместимость и масса

Крейс. скорость: 17 Kts. (20 MPH)

Макс. скорость: 20 Kts. (23 MPH)

Водоизмещение: 62000 Pounds

Вместимость воды: 260 Gallons

Вместимость сточного бака: 95 Gallons

Объем топливного бака: 1000 Gallons

Размещение

Всего кают: 3

Корпус и палуба

Материал корпуса: Fiberglass

Информация о двигателе

Двигатели: 2

Производитель: Detroit Diesel

Модель: 6V92

Тип топлива: Diesel

ПОДРОБНОЕ ОПИСАНИЕ

Specifications

Vessel Walkthrough: The West Bay SonShip 58' Pilothouse is a three stateroom flybridge motor yacht with wide beam, spacious salon, galley up, walk around side decks with extended safety rails and large aft cockpit.

Accommodations: This 3 stateroom pilot house offers a spacious, comfortable main salon with large windows including double glass Salon doors with Phantom Screens opening onto the aft deck. There is a large L-shaped sofa to port. Along the starboard are two swivel barrel chairs, a wet bar and an entertainment centre. The galley and dinette are in the raised pilothouse. The master and guest staterooms have walk around queen beds, spacious dressing room, cedar-lined closets and well laid out storage, flat screen TVs and independent sound systems. The third stateroom has two singles with additional storage.

- well laid out pilothouse
- custom double helm seat in Pilothouse
- chart table and chart storage
- 3 flat screen TVs
- Salon TV upgraded 2013
- satellite reception
- Pioneer sound system

Electronics

- Furuno GPS Navigation
- AIS
- (2) ICOM M57 VHF
- Furuno Radar
- Comnav 2200 auto pilot with bridge remote
- Viewsonic VG7006 c/w NobleTec
- Upgraded to Furuno NavNet 3D with backup computer system in Pilothouse and Flybridge including AIS, Radar and Sounders.
- Ritchie compass
- Com Nav rudder angle indicator
- Dataline Robertson sounder and speed gauges
- intercom and telephone system throughout
- KVH sea tel domes

Galley

- Custom Granite countertops
- 4 burner electric stove top
- double stainless steel sink
- Organized storage with overhead cupboards
- Frost Free side by side refrigerator with water and ice dispenser
- Panasonic convection microwave oven
- Broan trash compactor
- Westinghouse dishwasher

Electrical

- 12 Kw Onan generator w/1200 hrs
- Heart inverter
- Promariner 24v/30amp charger
- True Charge 40 charger
- dedicated house batteries and starting system
- Electric Heat in Saloon

Mechanical & Engine Room

- Twin 6V92 Detroit Diesels
- Wesmar hydraulic bow thruster
- Overhaul of all exhaust systems and heat exchangers in 2012.
- Wesmar stabilizers c/w 1000 gyro controller
- dripless shaft seals
- trolling valves
- All new hoses, valves & filters for Vacuflush system 2013.
- Racor filters
- oil change system
- Automatic Fireboy
- Espar diesel furnace (2) serviced 6 months ago.
- Village Marine 800 GPD Water maker upgraded in 2010
- Broan built in vacuum
- Washer & Dryer added to Engine Room in 2008

Hull and Deck/Flybridge

- Zodiac tender c/w canvas (2012)
- 50 HP Yamaha 4 stroke outboard
- Nick Jackson 1500 lb. davit
- radar arch
- 2 helm seats
- L settee
- stereo speakers
- Rayline spot light
- remote windless control
- Wesmar Bow Thruster
- BBQ modified to Propane in Cockpit
- Flybridge Helm Seats replaced 2013
- Bottom/Zincs October 2014
- intercom
- 3 station MMC controls
- Maxwell 3500 windless
- 300' 5/16" anchor chain
- fresh and saltwater wash down
- bow pulpit
- Plowanchor
- bridge canvas
- pilothouse windshield cover
- Bimini with full enclosure New 2013
- Swimstep staples
- New Anchor 2010
- New Floscan monitor with all new fuel line

Lazarette

- Glendenning shore power cord winder storage shelves
- rod storage
- Accessable Battery Storage for easy maintenance
- hot water tank (2012)
- Sea Star hydraulic steering
- Spacious Storage

Cockpit

- Mathers engine controls and thruster
- Robertson depth sounder
- Phantom screen door
- 4 rod holders
- Custom teak cockpit & covering boards new 2010
- flood lights
- stereo speakers
- Built in Propane BBQ
- stainless sink
- hot/cold shower
- Bait Tank

Features:

- Boat House kept since New
- Onan Generator- 1200 Hours
- (2) Espar Diesel Furnace Heaters (Serviced in the last 6 months)
- Teak Decks- (Custom in 2010)
- Teak Caprails- (Custom in 2010)
- Bimini/Full Enclosure
- Two Person Bench Seat- Lower Helm
- Flo Scan Meters
- 14'-6" Zodiac with 50 Horsepower- New in 2012
- Staples
- Nick Jackson 1,500 lb Davit

Additions & Upgrades

- After vessel was purchased in 2008, all interior finishes, including granite countertops in all areas including heads. New Carpeting was upgraded throughout. Additional cabinetry added to the Salon. New soft goods added at that time.
- "Shantoo" has been maintained professionally by Tri-Shore Yacht Services since launching. The boat has always been kept in its boathouse in Reed Point Marina.
- Bottom is done annually
- Full wax annually
- 2013 New Bridge Enclosure
- 2013 New phantom screens in Pilothouse
- 2013 All new hoses, valves and fittings for Vacu flush system
- 2013 New generator sea water pump
- 2013 New Television in the Salon
- New 14.5' Zodiac Tender and 50 HP Yamaha Outboard
- New teak decks and cap rail
- Flybridge Helm seats replaced
- Watermaker Upgraded- Village Marine 800 GPD
- Electronics upgraded to Furuno NavNet 3D with backup computer system in pilothouse and flybridge, including AIS, radar and sounders.
- BBQ modified to allow for propane BBQ in cockpit
- Washer and dryer added to engine room in 2008
- New flo scan fuel gauges with all new fuel lines.
- Overhaul of all exhaust systems in 2012.
- Heat Exchangers recently serviced
- New Plowanchor in 2010

Remarks:

Recent 2014 Fluid Analysis Report is available upon request!

Current Boat House is available for sale if desired.

Exclusions:

- Vessel name "**SHANTOO**" is reserved by the Current Owner and will be removed.
- All personal Property will be removed prior to the sale of the boat.

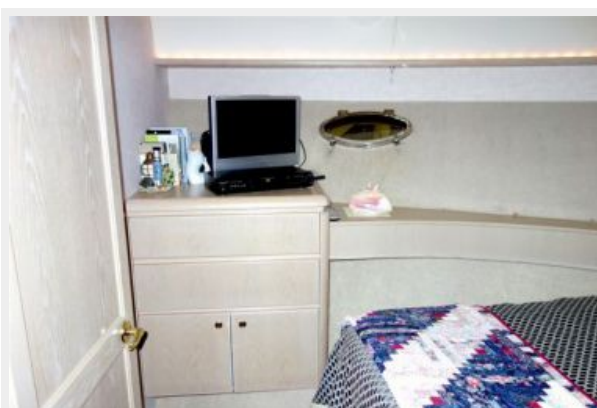
Исключения

При продаже яхты исключаются личные вещи владельца.

Отказ от ответственности

Компания предоставляет описание судна или яхты добросовестно, но не может гарантировать точность этой информации, а также не ручается за техническое состояние. Покупатель должен проинструктировать своих агентов или оценщиков исследовать представленную информацию более подробно, по собственному желанию. Продажа судна или яхты, изменение цены или снятие с продажи будет происходить без предварительного уведомления.

ФОТОГРАФИИ





КОНТАКТЫ

Андрей Шестаков (Andrey Shestakov) – ведущий яхтенный брокер отдела продаж яхт и судов компании Shestakov Yacht Sales Inc. Официальный представитель Shestakov Yacht Sales Inc. для русскоговорящих клиентов в центральном офисе компании в Майами/Форт Лодердейл/Флорида/США.

Контактная информация

Email: andrey@shestakovyachtsales.com

Web: shestakovyachtsales.com

Телефоны

Краснодарский край: **+7(918)465-66-44**

США, Майами, Флорида: **+1(954)274-4435**

Время работы

Понедельник – Суббота: **9:00 - 21:00**
EDT

Воскресенье: **Закрито**

Адрес



Harbour Towne Marina, 850 NE 3rd St,
STE 213, Dania, FL 33004