

BLUE DOG — CAISON YACHTS



Судостроитель: CAISON YACHTS

Год постройки: 2005

Модель: Катер для спортивной рыбалки

Цена: **ЦЕНА ЯХТЫ ПО ЗАПРОСУ**

Местонахождение: United States

Длина общая: 64' 3" (19.58m)

Ширина: 17' 10" (5.44m)

Макс. осадка: 5' 0" (1.52m)

Крейс. скорость: 36 Kts. (41 MPH)

Макс. скорость: 42 Kts. (48 MPH)

Купить **Blue Dog — CAISON YACHTS** а также выбрать подходящую вам яхту из нашего каталога яхт вам поможет опытный яхтенный брокер Андрей Шестаков. На сегодняшний день компания **Shestakov Yacht Sales Inc.** имеет большое количество яхт в собственном списке продаж, а также тесно сотрудничает со всеми крупными яхтенными производителями по всему миру.

Для того чтобы купить яхту **Blue Dog — CAISON YACHTS** а также проконсультироваться по любому вопросу связанному с покупкой, продажей, чартером яхт позвоните по телефону **+7(918)465-66-44**.

ОГЛАВЛЕНИЕ

ОГЛАВЛЕНИЕ	2
ХАРАКТЕРИСТИКИ	6
Обзор	6
Основная информация	6
Размеры	6
Скорость, вместимость и масса	6
Размещение	7
Корпус и палуба	7
Информация о двигателе	7
ПОДРОБНОЕ ОПИСАНИЕ	8
Salon	8
Galley	8
Companionway	9
Master Stateroom Fwd	9
Master Ensuite Head	9
Crews Quarters (Stbd)	10
Crew Head	10
Guest Stateroom (Port)	10
Guest Head	11
Cockpit	11
Engine Room	12
Flybridge	13
Electronics	13
Исключения	14
Отказ от ответственности	14
ФОТОГРАФИИ	15
Stern	15
Stbd Profile	15

Running	15
Stbd Profile	15
2006 64' Caison	16
Running	16
Hull	17
Starboard Profile	17
Hull	17
Hull	17
Bow	18
Hull	18
Cockpit	18
Cockpit	18
Cockpit	18
Cockpit	18
Cockpit	19
Cockpit	19
Cockpit	19
Cockpit	19
Cockpit	19
Cockpit	20
Cockpit	20
Salon	20
Salon	20
Salon	20
Salon	20
Galley	21
Galley	21
Galley	21
Dinette	21
Dinette	22

Master Stateroom	22
Master Stateroom	22
Master Stateroom	22
Master Stateroom	23
Master Head	23
Master Head	23
Guest Stateroom	23
Guest Stateroom	24
Guest Stateroom	24
Guest Head	24
Guest Head	24
Crew Quarters	25
Crew Head	25
Crew Head	25
Flybridge	25
Flybridge	26
Flybridge	26
Flybridge	26
Flybridge	26
Flybridge	26
Flybridge	26
Flybridge	26
Flybridge	26
Flybridge	27
Flybridge	27
Flybridge	27
Flybridge	27
Flybridge	27
Flybridge	27
Teaser Reels	28
Engine Room	28

Engine Room	28
Engine Room	28
Engine Room	28
Engine Room	28
Engine Room	29
Engine Room	29
Engine Room	29
Engine Room	29
Engine Room	29
КОНТАКТЫ	30
Контактная информация	30
Телефоны	30
Время работы	30
Адрес	30

ХАРАКТЕРИСТИКИ

Обзор

Another \$100k Price Reduction!

Economical with C32s @ 1650hp. American Custom Yachts paint job completed 10/14. New teak deck, new enclosure, new carpet, new varnish, upgraded electronics. bottom work (Sept. 2014) and everything serviced in 2014. Low hours. Caison Yachts' ride will compare very favorable to any custom ride on the market today. Come experience the Carolina ride for yourself!

Основная информация

Тип судна: Катер для спортивной рыбалки

Модельный год: 2006

Год постройки: 2005

Страна: United States

Открытая палуба мостика: Да

Кубрик: Да

Размеры

Длина общая: 64' 3" (19.58m)

Ширина: 17' 10" (5.44m)

Макс. осадка: 5' 0" (1.52m)

Скорость, вместимость и масса

Крейс. скорость: 36 Kts. (41 MPH)

Крейсерская скорость поворота: 1850 Kts.

Макс. скорость: 42 Kts. (48 MPH)

Макс. скорость поворота: 2350 Kts.

Водоизмещение: 75000 Pounds

Вместимость воды: 250 Gallons

Объем топливного бака: 2150 Gallons

Размещение

Всего кают: 3

Всего ком. состава: 3

Корпус и палуба

Материал корпуса: Composite

Информация о двигателе

Двигатели: 2

Производитель: Caterpillar

Модель: C32

Тип двигателя: Inboard

Тип топлива: Diesel

ПОДРОБНОЕ ОПИСАНИЕ

Salon

- Entering salon through teak actuated door there is a C-shaped leather couch to port with storage underneath
- Large high gloss teak table with actuated top and storage underneath
- Teak interior
- Long corian countertops to stbd
- Paneltronics panel behind teak doors
- Sole 42" flat panel TV
- Uline icemaker
- Direct TV/Satellite TV system
- Uno multi zone stereo controller
- Denon DVD player
- Denon tuner
- New carpet 2014
- Overhead 12/24 volt lighting in headliner
- Large salon windows with teak lambrequins
- Marine Air System by Dometic AC digital controls with (2) 13000 BTU units

Galley

- U-shaped walk in galley with black Corian countertop
- (2) sets of Sub Zero refrigerator and freezer with teak face and stainless handles
- Stainless under counter mount sink with Grohe stainless fixtures
- Kenyon (2) burner cooktop
- Teak faced slide out trash drawer
- Brushed nickel hardware on all drawers in galley
- Set of (4) drawers for pots and pan storage
- Above countertop GE Microwave behind slide out door
- Bank of (2) drawers for silverware
- (3) large slide out doors with brushed nickel fittings throughout galley
- (3) sets of cabinet doors for food storage
- (5) Surround sound speakers
- Dinette to stbd with teak and holly flooring and teak pedestal over Corian topped table
- Booth style dinette with leather seating
- Over dinette, teak doors with brushed nickel knobs
- KVH Trac Phone system
- VEI computer system and Icom M422 VHF all in salon and galley
- Teak and holly flooring in galley

Companionway

- Large closet with teak shelves and teak bullnosing
- Capability for washer/dryer
- Padded walls throughout companionway
- Entering companionway down a set of 4 teak steps with carpet runway
- AC teak return vents to port and stbd
- Bilge access hatch

Master Stateroom Fwd

- Large queen style bed with padded headboard
- Teak interior
- 12/24 volt overhead lighting with dimmer switches
- Marine Air System by Dometic A/C digital control
- Uno surround sound multi controller
- Carbon Monoxide detector/smoke detector
- 12 volt reading lights
- Master mattress folds in half with large storage underneath
- Sole' 23" flat screen TV
- At foot of bed linen closet behind teak door
- Clothes hamper
- (2) Drawers underneath bed
- (2) 110 volt outlets
- Teak faced cabinet with brushed nickel hardware
- Storage overhead bed
- To stbd, large cedar lined hanging closet with 3 shelves behind teak door
- Bank of 3 drawers underneath Corian countertop make up counter with overhead storage in cedar lined cabinet
- Bilge access hatch
- New carpeting throughout
- Bomar hatch

Master Ensuite Head

- Amtico flooring
- Large shower forward with custom seating
- Grohe fixtures
- Teak accented entry door with brushed nickel hardware
- Raritan freshwater head
- Textured wallpaper
- Granite countertop

- Mirrored vanity
- 12/24 volt lighting
- Stainless towel rack
- Linen closet behind teak faced doors with brushed nickel hardware

Crews Quarters (Stbd)

- Upper and lower bunks with teak sea rail
- 12/24 volt lighting
- Pull down storage drawer at head of top bunk
- 12 volt reading lights
- (2) Surround sound stereo speakers
- Cedar lined hanging closet
- Bank of (4) drawers with brushed nickel hardware
- 15" Sole' flat screen TV
- Set of (2) drawers under bottom bunk for storage
- 110 volt outlet
- Crusair AC controls
- Padded walls throughout

Crew Head

- Amtico flooring
- Large corian countertop with Grohe fixtures
- Porcelain sink
- Textured wallpaper
- Mirrored medicine cabinet
- 12 volt fan
- 12/24 volt lighting overhead
- (2) teak faced cabinets with brushed nickel hardware below sink
- Raritan freshwater head
- Large shower with teak and glass door
- Brushed nickel hardware
- Painted Algrip shower with custom seat and Grohe fixtures
- Stainless towel rack

Guest Stateroom (Port)

Entering from companionway through teak door with brushed nickel hardware

- Large double bed (thwart ship)

- Mattress folds back with rod storage underneath
- Teak faced drawer underneath bed for storage
- (2) 110 volt outlets
- (2) 12volt reading lights above bed
- Padded fabric headboard
- Smoke detector and carbon monoxide detector
- (6) 12/24 volt overhead lights
- (2) Surround sound stereo speakers
- Sole' 20" flat screen TV
- Storage at foot of bed behind teak faced door with brushed nickel hardware
- Large cedar lined closet with 4 shelves for linens and storage

Guest Head

- Amtico flooring
- Large corian countertop with Grohe fixtures
- Porcelain sink
- Textured wallpaper
- Mirrored medicine cabinet
- 12 volt fan
- 12/24 volt lighting overhead
- (2) teak faced cabinets with brushed nickel hardware below sink
- Raritan freshwater head
- Large shower with teak and glass door
- Brushed nickel hardware
- Painted Algrip shower with custom seat and Grohe fixtures
- Stainless towel rack

Cockpit

- Large cockpit – Fisherman's dream
- Teak deck and cover boards
- Teak mezzanine
- Engine room access
- (2) tackle drawers with lock stainless fittings
- Large ice dump with remote eye sensor for Dometic icemaker with actuated lid
- Large drink box and bait box
- Actuated with Izerwaren gas shocks
- Mezzanine cushions
- Teak high gloss salon door
- Storage cabinet tackle drawer
- Tackle drawer with Cablemaster access behind

- 10 Lee rod holders
- Release Marine fighting chair with rocket launcher
- Cutting board and drawer
- 100 amp service with (2) cable master outlets
- Teak covering boards with transom fish box
- (2) stainless cleats with corner hause pipes
- Large transom door with stainless latch
- In step of mezzanine, storage at foot
- Fresh and saltwater wash down
- Large overhang with (2) Bose surround sound speakers and two stainless lights
- Cockpit cover

Engine Room

- Caterpillar C32 engines (1650 hp each)
- 2525 hours on stbd engine
- 2536 hours on port engine
- Twin Disc gears 1.75 to 1 ratio
- Dometic Eskimo icemaker with digital remote control
- Visonic limited alarm keypad
- Fuel fills port and starboard
- Stainless ladder entering engine room
- Large engine room with almost 5' of headroom
- Fuel dual racor system
- Delta T mist eliminator system
- 24/12 volt lighting
- Manual fuel site gauges
- Marine Exhaust riser system
- Reverso oil change system with manifold for gear, generator and engine
- SeaStar hynautic steering
- (2) Caterpillar 21kw generators with sound shields
- Engine room camera
- 24 volt fans
- Vemar AC digital control and engine room A/C
- (2) Isoboost 50 power management systems
- Stingray Headhunter AC pump
- SeaRecovery watermaker
- Aquawhisper 600 gpd
- (2) Phase III Newmar battery charger
- (4) AC compressors
- Marine Air System by Dometic with Vinmar control panels
- Pump room with elevated shelf
- Tool chest

- 24 volt lighting
- Lazarette access aft with 24 volt lighting
- Battery boxes (port and stbd) outboard of engine

Flybridge

- Bridge access through stainless ladder in hatch to stbd with actuated hatch cover
- Large spacious bridge
- Console to port
- (2) Release Marine captain's chairs
- Single lever controls
- Teak helm pod
- Actuated sink to stbd
- Rod storage underneath seating (stbd)
- Large L-shaped seating in front of helm with new cushions
- Seating to stbd with brand new cushions
- Actuated storage underneath
- Bose surround sound speakers
- Access to helm and brow
- Brand new 3-sided Stratoglass enclosure
- Overhead 12/24 nav lighting
- Non-skid flooring
- Access underneath helm
- Caison Yachts control panel
- Digital CAT controls
- Rupp 4 spreader 41' outriggers
- (2) aft spreader lights
- Miya Epoch US9 24volt teaser reels
- (2) Polyplaner VHF speakers recessed in hardtop overhead
- Camera system mounted in hardtop
- Pipewelders hardtop with a 6 rod holder bellyband aft
- Rupp center rigger

Electronics

- Northstar 972 plotter/sounder/radar
- (2) Furuno 15" monitor (plotter/sounder/radar)
- Furuno 25kw radar with remote pad
- Icom M802 VHF with remote mic
- Simrad AP26 Autopilot
- Uno surround sound digital control box
- Toggle switch start/stop buttons

- Manual bilge pump lighting
- CAT controls
- ACR spotlight
- (2) RD30
- Northstar 952X
- (2) Icom M602 VHF's
- KVH Trac phone with handset
- Richie compass

Исключения

При продаже яхты исключаются личные вещи владельца.

Отказ от ответственности

Компания предоставляет описание судна или яхты добросовестно, но не может гарантировать точность этой информации, а также не ручается за техническое состояние. Покупатель должен проинструктировать своих агентов или оценщиков исследовать представленную информацию более подробно, по собственному желанию. Продажа судна или яхты, изменение цены или снятие с продажи будет происходить без предварительного уведомления.

ФОТОГРАФИИ

Stbd Profile



Stern



Running



Stbd Profile



2006 64' Caison



Running



Starboard Profile



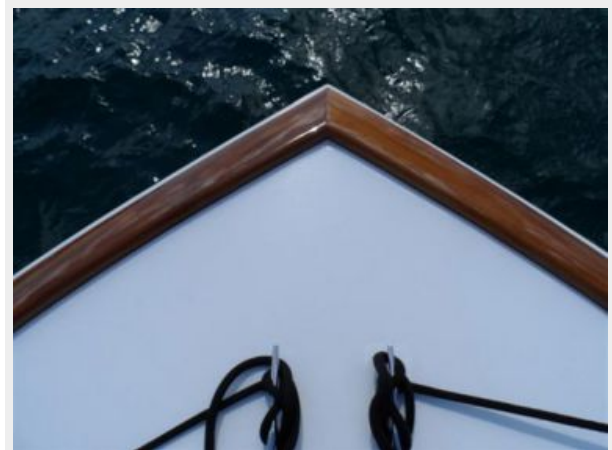
Hull



Hull



Hull



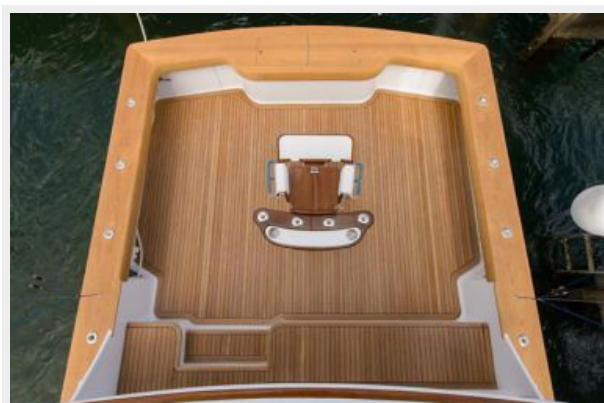
Bow



Hull



Cockpit



Cockpit



Cockpit



Cockpit



Скокпит



Скокпит



Скокпит



Скокпит



С cockpit



С cockpit



Salon



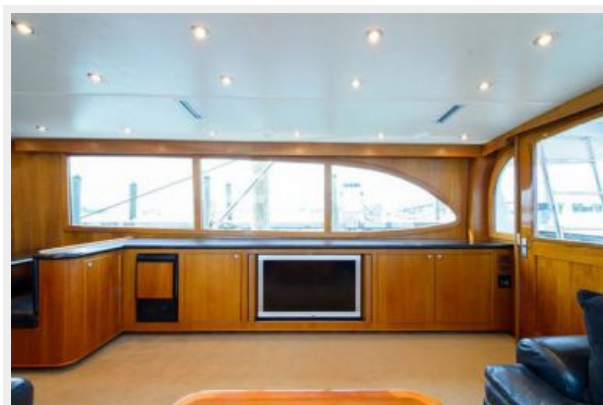
Salon



Salon



Salon



Galley



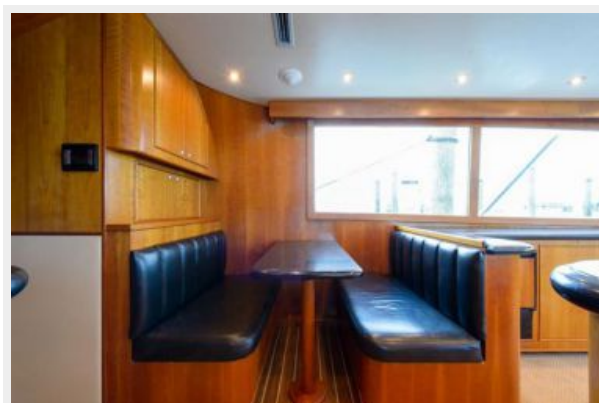
Galley



Galley



Dinette



Dinette



Master Stateroom



Master Stateroom



Master Stateroom



Master Stateroom



Master Head



Master Head



Guest Stateroom



Guest Stateroom



Guest Stateroom



Guest Head



Guest Head



Crew Quarters



Crew Head



Crew Head



Flybridge



Flybridge



Flybridge



Flybridge



Flybridge



Flybridge



Flybridge



Flybridge



Flybridge



Flybridge



Flybridge



Flybridge



Flybridge



Teaser Reels



Engine Room



Engine Room



Engine Room



Engine Room



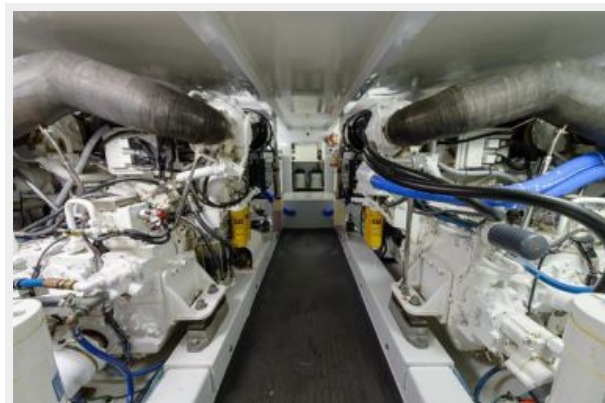
Engine Room



Engine Room



Engine Room



Engine Room



Engine Room



Engine Room



КОНТАКТЫ

Андрей Шестаков (Andrey Shestakov) – ведущий яхтенный брокер отдела продаж яхт и судов компании Shestakov Yacht Sales Inc. Официальный представитель Shestakov Yacht Sales Inc. для русскоговорящих клиентов в центральном офисе компании в Майами/Форт Лодердейл/Флорида/США.

Контактная информация

Email: andrey@shestakovyachtsales.com

Web: shestakovyachtsales.com

Телефоны

Краснодарский край: **+7(918)465-66-44**

США, Майами, Флорида: **+1(954)274-4435**

Время работы

Понедельник – Суббота: **9:00 - 21:00**
EDT

Воскресенье: **Закрето**

Адрес



Harbour Towne Marina, 850 NE 3rd St,
STE 213, Dania, FL 33004